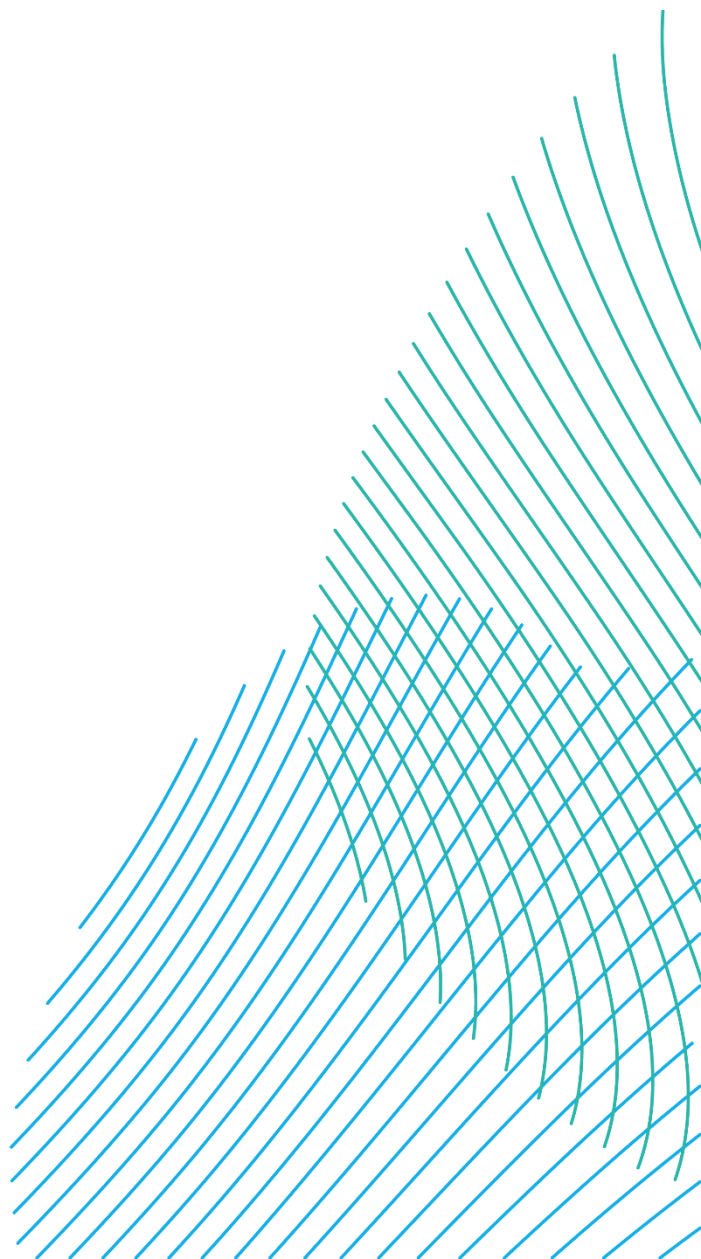


RWE

Notice to Mariners





RWE-TGS Awel y Môr Notice to Mariners

Ramform Vanguard v1

Overview

Project	Awel y Môr Offshore Wind Farm
Date of Issue	07 May 2026
Notice number / reference	1
Relevant Marine Licence reference	N/A
Location	Around 53 37 N 03 47 W Offshore Llandudno, North Wales
Activity	Geophysical survey
Scheduled start date	25 May 2026
Expected End Date	25 July 2026
Issued by	Marc Boon (TGS)
Kingfisher Bulletin download link	https://kingfisherbulletin.org/notice-map?noticeId=5939
Fisheries Enquiries Contacts:	<p>Fisheries Liaison Officers:</p> <p>Jim Andrews T: +44(0)845-880-2540 M: +44(0)7908-225865 Email: www.awjmarine.co.uk</p> <p>Sophie Farenden M: 07525 128344 Email: sophie.farenden@brownmay.com</p> <p>Rhys Kibble M : 07775 613586 Email: rhys.kibble@brownmay.com</p>
General Enquiries Contacts:	For Vanguard: +44 7740 753366 Email: marc.boon@tgs.com


Activities

All mariners are advised that Ramform Vanguard will be carrying out geophysical survey works at Awel y Môr Offshore Wind Farm from 25th May until 25th July 2026. These dates are subject to weather and sea conditions. Specific coordinates of locations where works occur are found below.

Requirements of Mariners

Mariners are requested to observe a safe working distance of 1000m when the Ramform Vanguard is performing towed survey activities at Awel y Môr Offshore Wind Farm. It is also requested that mariners observe a distance of at least 500m when Ramform Vanguard is manoeuvring into position for the safety of all sea users operating within the wind farm, and to ensure Ramform Vanguard can safely position itself without negative interactions with sea users or their equipment. The towed equipment extends approximately 350m behind the stern.

Vessel Information

Vessel Information		Picture
Name	Ramform Vanguard	
IMO	9188714	
MMSI	311001861	
Call Sign	C6JF5	
Length (m)	86.2m	
Breadth (m)	39.6m	
Draught (m)	7.3m	
AIS	Yes	
Positioning Equipment	Multiple systems	

Works Locations

The table lists the survey area and the deployment/recovery areas. The bulk of the operations will take place inside the survey area (extents of this area are listed here). The deployment and recovery area will only be used at certain and limited times for initial deployment, incidental troubleshooting and recovery of the trailing equipment.

RWE

Location	Lat DDM	Lon DDM	Northing	Easting	Works type
Awel y Mor Survey and navigation area (outlined in green on chart below)	53° 23.641'N	3° 39.190'W	456566	5916301	Geophysical survey
	53° 23.641'N	3° 39.195'W	456561	5916302	
	53° 23.643'N	3° 39.203'W	456552	5916306	
	53° 23.644'N	3° 39.212'W	456542	5916308	
	53° 23.645'N	3° 39.220'W	456533	5916310	
	53° 23.646'N	3° 39.229'W	456523	5916312	
	53° 23.646'N	3° 39.238'W	456513	5916312	
	53° 23.646'N	3° 39.247'W	456503	5916312	
	53° 23.646'N	3° 39.256'W	456493	5916312	
	53° 23.646'N	3° 39.265'W	456483	5916311	
	53° 23.644'N	3° 39.274'W	456473	5916309	
	53° 23.643'N	3° 39.282'W	456464	5916306	
	53° 23.641'N	3° 39.291'W	456454	5916303	
	53° 23.793'N	3° 40.083'W	455579	5916593	
	53° 23.794'N	3° 40.089'W	455572	5916595	
	53° 23.799'N	3° 40.111'W	455548	5916604	
	53° 23.959'N	3° 40.854'W	454728	5916908	
	53° 23.627'N	3° 44.101'W	451123	5916329	
	53° 23.077'N	3° 44.986'W	450132	5915319	
	53° 24.153'N	3° 50.401'W	444153	5917382	
	53° 25.087'N	3° 55.088'W	438981	5919177	
	53° 29.835'N	3° 55.083'W	439100	5927980	
	53° 31.409'N	3° 52.406'W	442096	5930861	
	53° 31.584'N	3° 36.029'W	460193	5930999	
	53° 31.588'N	3° 34.400'W	461993	5930992	
	53° 30.143'N	3° 34.381'W	461993	5928312	
	53° 29.583'N	3° 35.782'W	460435	5927286	
	53° 27.724'N	3° 40.886'W	454759	5923890	
	53° 27.038'N	3° 41.531'W	454033	5922625	
	53° 26.765'N	3° 41.245'W	454344	5922115	
53° 25.479'N	3° 38.373'W	457502	5919701		

RWE

53° 25.250'N	3° 37.726'W	458215	5919270
53° 24.794'N	3° 35.742'W	460405	5918407
53° 24.791'N	3° 35.729'W	460420	5918401
53° 24.778'N	3° 35.678'W	460476	5918376
53° 24.763'N	3° 35.630'W	460529	5918348
53° 24.746'N	3° 35.583'W	460581	5918316
53° 24.727'N	3° 35.538'W	460630	5918280
53° 24.707'N	3° 35.496'W	460677	5918242
53° 24.684'N	3° 35.455'W	460721	5918200
53° 24.661'N	3° 35.418'W	460762	5918156
53° 24.635'N	3° 35.383'W	460801	5918109
53° 24.609'N	3° 35.351'W	460836	5918060
53° 24.582'N	3° 35.321'W	460868	5918009
53° 24.553'N	3° 35.295'W	460897	5917955
53° 24.534'N	3° 35.279'W	460914	5917920
53° 24.519'N	3° 35.265'W	460929	5917892
53° 24.516'N	3° 35.264'W	460931	5917887
53° 24.496'N	3° 35.245'W	460951	5917850
53° 24.492'N	3° 35.242'W	460955	5917842
53° 24.463'N	3° 35.217'W	460982	5917788
53° 24.435'N	3° 35.192'W	461009	5917736
53° 24.411'N	3° 35.171'W	461032	5917691
53° 24.382'N	3° 35.145'W	461060	5917637
53° 24.371'N	3° 35.135'W	461071	5917617
53° 24.354'N	3° 35.121'W	461086	5917584
53° 24.326'N	3° 35.099'W	461110	5917532
53° 24.312'N	3° 35.090'W	461120	5917506
53° 24.304'N	3° 35.085'W	461126	5917491
53° 24.275'N	3° 35.064'W	461148	5917438
53° 24.273'N	3° 35.063'W	461150	5917434
53° 24.230'N	3° 35.027'W	461189	5917354
53° 24.219'N	3° 35.018'W	461199	5917334

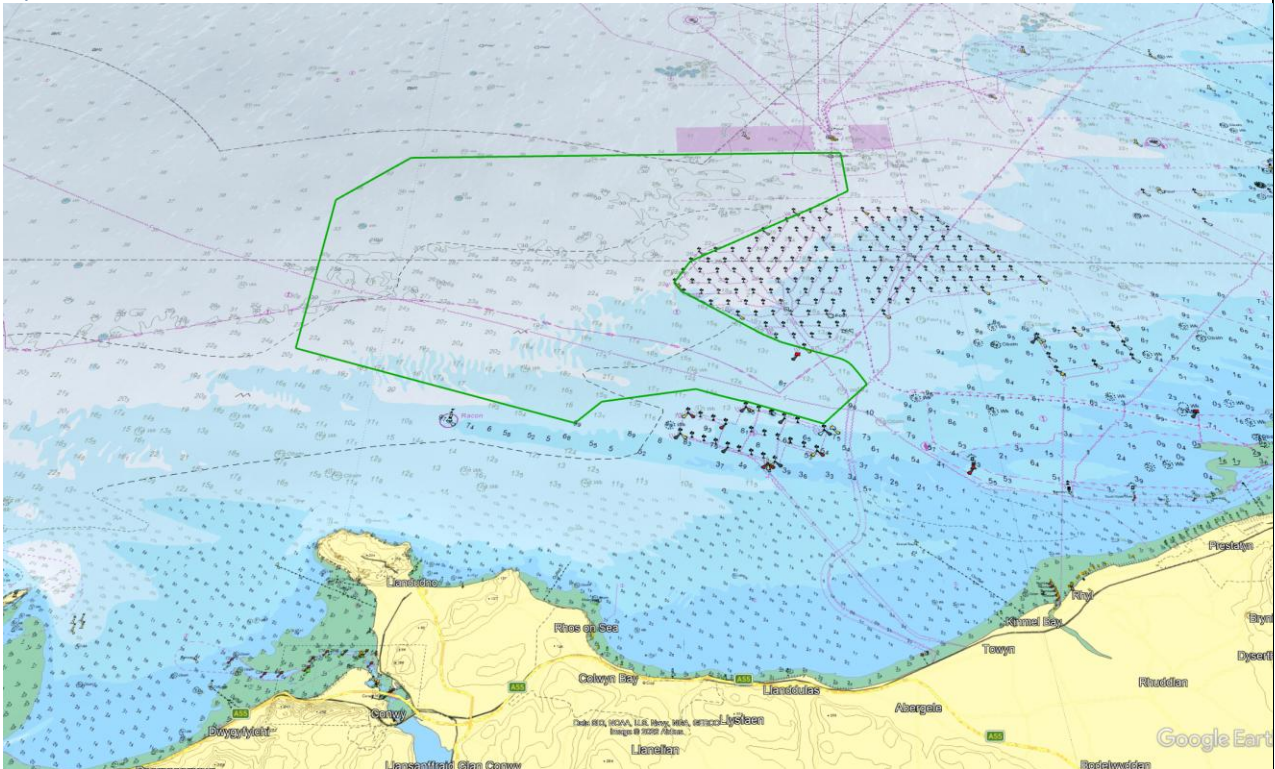
RWE

	53° 24.196'N	3° 34.998'W	461220	5917290	
	53° 24.184'N	3° 34.989'W	461230	5917268	
	53° 24.159'N	3° 34.970'W	461251	5917222	
	53° 24.145'N	3° 34.960'W	461262	5917195	
	53° 24.130'N	3° 34.950'W	461273	5917167	
	53° 24.108'N	3° 34.936'W	461288	5917126	
	53° 24.092'N	3° 34.926'W	461299	5917097	
	53° 24.084'N	3° 34.921'W	461304	5917083	
	53° 24.078'N	3° 34.918'W	461307	5917071	
	53° 23.054'N	3° 36.591'W	459437	5915188	
	53° 23.641'N	3° 39.190'W	456566	5916301	
Awel y Mor Deployment area (outlined in red on chart be- low)	53° 43.630'N	4° 17.192'W	415120	5953936	Equipment de- ployment and recovery only
	53° 55.160'N	5° 9.847'W	357879	5976717	
	53° 57.467'N	5° 8.430'W	359559	5980946	
	53° 45.379'N	4° 14.231'W	418432	5957121	
	53° 43.630'N	4° 17.192'W	415120	5953936	
	53° 45.379'N	4° 14.231'W	418432	5957121	
	53° 31.402'N	3° 52.403'W	442099	5930848	
	53° 29.828'N	3° 55.080'W	439103	5927967	

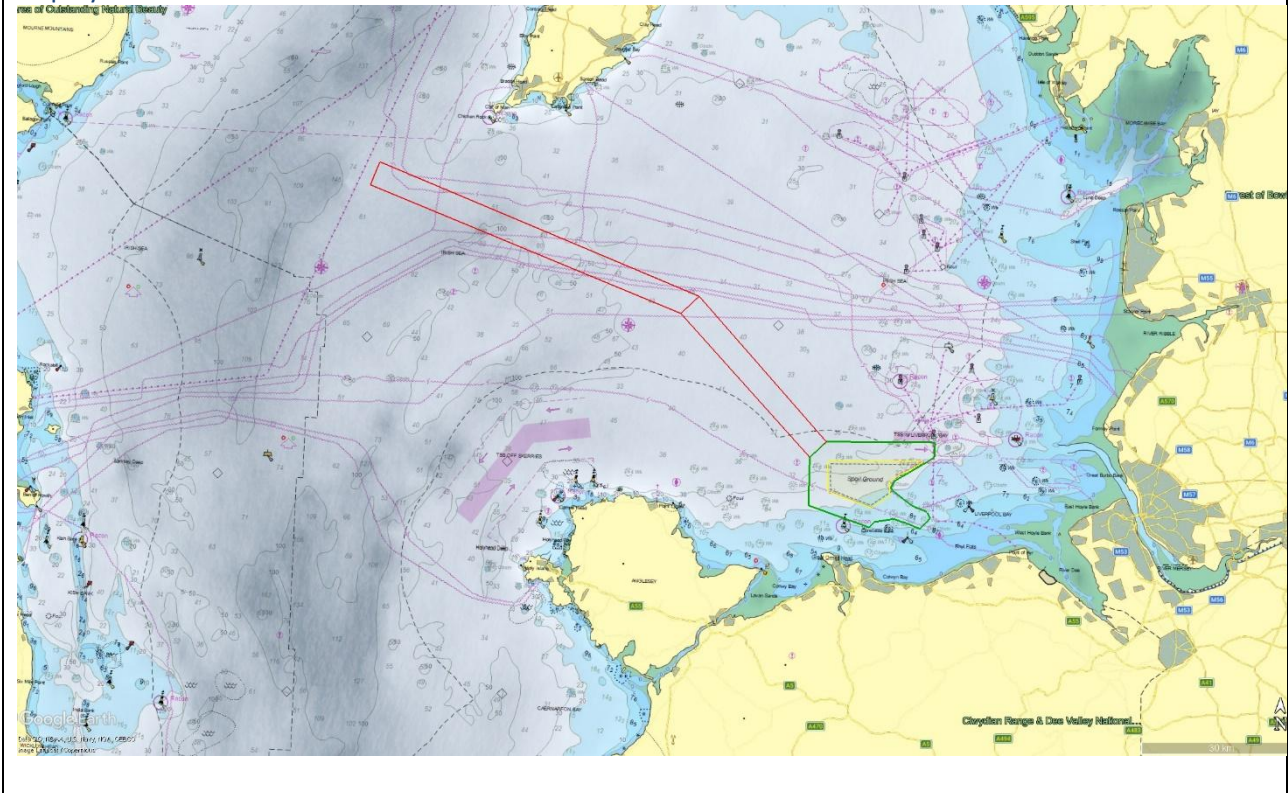
Ramform Vanguard in operation with towed equipment:



Operational Area:



Deployment corridor:



Additional information

All mariners are requested to contact project Marine Coordination and monitor VHF CH16 when navigating or operating in the vicinity of the survey area.

Contact details

RWE PM: Nick Wood +44 7989 493826. Email: nicholas.wood@rwe.com

TGS PM: Marc Boon +44 7740 753366. Email: marc.boon@tgs.com

Survey Vessel: Ramform Vanguard Bridge +47 67514960 or channel 16. Email: vanbridge@tgs.com