



Notice to Mariners

Awel y Môr Offshore Wind Farm

Geotechnical survey – Export Cable Route



Awel y Môr Offshore Wind Farm Notice to Mariners 1

Overview

Project	Awel y Môr Offshore Wind Farm
Date of Issue	29-05-2026
Notice number / reference	2
Relevant Marine Licence reference	RML2323v4
Location	Awel y Môr Offshore Wind Farm – Export Cable Route
Activity	Geotechnical survey works in the Export Cable Route Area
Scheduled start date – Connector vessel	31 st of May 2026
Scheduled start date – Forth Constructor	21 st of June 2026)
Expected End Date – Connector vessel	15 th of June 2026)
Expected End Date – Forth Constructor	7 th of July 2026
Comments	Connector will work on locations above app. 8m LAT. Forth Constructor will primarily work on most nearshore part (< 10m LAT), and possible also on deeper part of the area.
Issued by	Team Manager: Martin Hoffmann phone +45 3174 0174, email mhf@geo.dk Project Manager: Caroline Frank Nielsen phone +45 3174 0239, email cfn@geo.dk
Kingfisher Bulletin download link	[insert link to NtM on Kingfisher Bulletin website]
Fisheries Enquiries Contacts:	Fisheries Liaison Officers: Jim Andrews T: +44(0)845-880-2540 M: +44(0)7908-225865 Email: www.awjmarine.co.uk Sophie Farenden M: 07525 128344 Email: sophie.farenden@brownmay.com
General Enquiries Contacts:	Site Manager Connector email phone: +45 3222 6705, email: sitemanager1@geo.dk



Activities

All mariners are advised that Connector/Forth Constructor will be carrying out geotechnical survey works at Awel y Môr Offshore Wind Farm, Export Cable Route from 31st of May until 7th of July 2026. These dates are subject to weather and sea conditions. Specific coordinates of locations where works occur are found below.

Requirements of Mariners

Mariners are requested to observe a safe working distance of 500m when the Connector/Forth Constructor is performing geotechnical investigations of Cone Penetrating Tests and Vibrocoring at Awel y Môr Offshore Wind Farm, Export Cable Route. It is also requested that mariners observe a distance of at least 500m when Connector/Forth Constructor is manoeuvring into position for the safety of all sea users operating within the wind farm, and to ensure Connector can safely position itself without negative interactions with sea users or their equipment.

Vessel Information

Vessel Information		Picture
Name	Connector	
IMO	9244568	
MMSI	219166000	
Call Sign	OYOJ2	
Length (m)	90.20	
Breadth (m)	19	
Draught (m)	7.0	
AIS	Class A	
Positioning Equipment	DP system - Kongsberg SDP-22	
Vessel Information		Picture
Name	Forth Constructor	
IMO	9994979	
MMSI	232053877	
Call Sign	MOWV8	
Length (m)	40	
Breadth (m)	12.4	
Draught (m)	2.65	
AIS	Class A	
Positioning Equipment	DP2 Kongsberg system	

Works Locations

Location	Coordinates				Works type
	Easting (WGS84 UTM30N)	Easting (WGS84 UTM30N)	Lat DMS	Lon DMS	
Offshore Export Cable Survey Coordinates	454320.828	5922083.37	53° 26' 44.85292622" N	003° 41' 15.96159268" W	Survey works
Offshore Export Cable Survey Coordinates	454347.8074	5922101.698	53° 26' 45.45438110" N	003° 41' 14.50890919" W	Survey works
Offshore Export Cable Survey Coordinates	455190.2709	5920720.412	53° 26' 01.01999937" N	003° 40' 28.14001433" W	Survey works
Offshore Export Cable Survey Coordinates	455428.5558	5920329.737	53° 25' 48.45147686" N	003° 40' 15.02979037" W	Survey works
Offshore Export Cable Survey Coordinates	455879.5934	5919590.246	53° 25' 24.66000115" N	003° 39' 50.21999810" W	Survey works
Offshore Export Cable Survey Coordinates	457806.324	5918424.043	53° 24' 47.49191951" N	003° 38' 05.28461310" W	Survey works
Offshore Export Cable Survey Coordinates	460070.1188	5917532.715	53° 24' 19.28459523" N	003° 36' 02.27473131" W	Survey works
Offshore Export Cable Survey Coordinates	460092.6085	5917487.075	53° 24' 17.81387554" N	003° 36' 01.03615780" W	Survey works
Offshore Export Cable Survey Coordinates	460113.1137	5917448.049	53° 24' 16.55665045" N	003° 35' 59.90807513" W	Survey works
Offshore Export Cable Survey Coordinates	460132.296	5917411.007	53° 24' 15.36327372" N	003° 35' 58.85254518" W	Survey works
Offshore Export Cable Survey Coordinates	460160.7388	5917354.783	53° 24' 13.55170729" N	003° 35' 57.28688388" W	Survey works
Offshore Export Cable Survey Coordinates	460189.843	5917297.897	53° 24' 11.71891292" N	003° 35' 55.68514706" W	Survey works
Offshore Export Cable Survey Coordinates	460214.9785	5917249.611	53° 24' 10.16327857" N	003° 35' 54.30223902" W	Survey works
Offshore Export Cable Survey Coordinates	460244.0827	5917194.048	53° 24' 08.37327897" N	003° 35' 52.70117359" W	Survey works
Offshore Export Cable Survey Coordinates	460258.3703	5917164.812	53° 24' 07.43111781" N	003° 35' 51.91431615" W	Survey works

RWE

Offshore Export Cable Survey Coordinates	460269.4828	5917135.443	53° 24' 06.48381390" N	003° 35' 51.29932119" W	Survey works
Offshore Export Cable Survey Coordinates	460304.4078	5917052.099	53° 24' 03.79643123" N	003° 35' 49.37058722" W	Survey works
Offshore Export Cable Survey Coordinates	460318.4308	5917021.672	53° 24' 02.81566338" N	003° 35' 48.59756087" W	Survey works
Offshore Export Cable Survey Coordinates	460362.8809	5916931.713	53° 23' 59.91680755" N	003° 35' 46.15022283" W	Survey works
Offshore Export Cable Survey Coordinates	460386.1643	5916881.442	53° 23' 58.29643279" N	003° 35' 44.86689640" W	Survey works
Offshore Export Cable Survey Coordinates	460399.9226	5916852.867	53° 23' 57.37551523" N	003° 35' 44.10909463" W	Survey works
Offshore Export Cable Survey Coordinates	460410.506	5916827.467	53° 23' 56.55647913" N	003° 35' 43.52462695" W	Survey works
Offshore Export Cable Survey Coordinates	460425.8518	5916786.721	53° 23' 55.24216447" N	003° 35' 42.67539888" W	Survey works
Offshore Export Cable Survey Coordinates	460434.8477	5916758.675	53° 23' 54.33708191" N	003° 35' 42.17569963" W	Survey works
Offshore Export Cable Survey Coordinates	460445.6515	5916723.894	53° 23' 53.21452591" N	003° 35' 41.57508778" W	Survey works
Offshore Export Cable Survey Coordinates	460460.2036	5916669.654	53° 23' 51.46336030" N	003° 35' 40.76277809" W	Survey works
Offshore Export Cable Survey Coordinates	460473.4328	5916619.383	53° 23' 49.84025900" N	003° 35' 40.02389612" W	Survey works
Offshore Export Cable Survey Coordinates	460480.7089	5916597.555	53° 23' 49.13590218" N	003° 35' 39.62013986" W	Survey works
Offshore Export Cable Survey Coordinates	460483.3547	5916565.805	53° 23' 48.10924740" N	003° 35' 39.46258834" W	Survey works
Offshore Export Cable Survey Coordinates	460490.6308	5916505.612	53° 23' 46.16348342" N	003° 35' 39.04154768" W	Survey works
Offshore Export Cable Survey Coordinates	460495.9225	5916448.726	53° 23' 44.32420533" N	003° 35' 38.72943625" W	Survey works
Offshore Export Cable Survey Coordinates	460499.2298	5916414.992	53° 23' 43.23351682" N	003° 35' 38.53519081" W	Survey works
Offshore Export Cable Survey Coordinates	460498.1384	5916349.86	53° 23' 41.12568486" N	003° 35' 38.56492660" W	Survey works

RWE

Offshore Export Cable Survey Coordinates	460494.5665	5916293.504	53° 23' 39.30114271" N	003° 35' 38.73289654" W	Survey works
Offshore Export Cable Survey Coordinates	460491.7883	5916243.497	53° 23' 37.68228456" N	003° 35' 38.86075809" W	Survey works
Offshore Export Cable Survey Coordinates	460491.7883	5916220.876	53° 23' 36.95028384" N	003° 35' 38.85056394" W	Survey works
Offshore Export Cable Survey Coordinates	460487.8196	5916173.25	53° 23' 35.40815904" N	003° 35' 39.04394110" W	Survey works
Offshore Export Cable Survey Coordinates	460477.8977	5916137.532	53° 23' 34.24969487" N	003° 35' 39.56494351" W	Survey works
Offshore Export Cable Survey Coordinates	460473.0958	5916113.317	53° 23' 33.46485698" N	003° 35' 39.81396690" W	Survey works
Offshore Export Cable Survey Coordinates	460470.2248	5916101.864	53° 23' 33.09347670" N	003° 35' 39.96421744" W	Survey works
Offshore Export Cable Survey Coordinates	460469.5898	5916098.371	53° 23' 32.98029504" N	003° 35' 39.99701685" W	Survey works
Offshore Export Cable Survey Coordinates	460467.8964	5916089.375	53° 23' 32.68874877" N	003° 35' 40.08462844" W	Survey works
Offshore Export Cable Survey Coordinates	460465.6739	5916076.04	53° 23' 32.25665502" N	003° 35' 40.19892451" W	Survey works
Offshore Export Cable Survey Coordinates	460461.4406	5916060.165	53° 23' 31.74182974" N	003° 35' 40.42092291" W	Survey works
Offshore Export Cable Survey Coordinates	460459.1488	5916047.914	53° 23' 31.34477392" N	003° 35' 40.53945724" W	Survey works
Offshore Export Cable Survey Coordinates	460455.6775	5916026.89	53° 23' 30.66354869" N	003° 35' 40.71788291" W	Survey works
Offshore Export Cable Survey Coordinates	460453.7196	5916016.042	53° 23' 30.31200057" N	003° 35' 40.81897427" W	Survey works
Offshore Export Cable Survey Coordinates	460451.9204	5916006.252	53° 23' 29.99474299" N	003° 35' 40.91195191" W	Survey works
Offshore Export Cable Survey Coordinates	460451.4971	5916003.765	53° 23' 29.91415112" N	003° 35' 40.93374388" W	Survey works
Offshore Export Cable Survey Coordinates	460450.7386	5916001.258	53° 23' 29.83282818" N	003° 35' 40.97367166" W	Survey works
Offshore Export Cable Survey Coordinates	460449.1511	5915995.146	53° 23' 29.63463090" N	003° 35' 41.05684803" W	Survey works

RWE

Offshore Export Cable Survey Coordinates	460447.9794	5915991.067	53° 23' 29.50231348" N	003° 35' 41.11843331" W	Survey works
Offshore Export Cable Survey Coordinates	460447.1195	5915987.528	53° 23' 29.38757289" N	003° 35' 41.16338430" W	Survey works
Offshore Export Cable Survey Coordinates	460446.2266	5915983.923	53° 23' 29.27068130" N	003° 35' 41.21009168" W	Survey works
Offshore Export Cable Survey Coordinates	460445.5651	5915981.178	53° 23' 29.18168004" N	003° 35' 41.24466105" W	Survey works
Offshore Export Cable Survey Coordinates	460444.8044	5915978.036	53° 23' 29.07980587" N	003° 35' 41.28442106" W	Survey works
Offshore Export Cable Survey Coordinates	460443.8453	5915974.133	53° 23' 28.95326665" N	003° 35' 41.33457747" W	Survey works
Offshore Export Cable Survey Coordinates	460443.5294	5915972.775	53° 23' 28.90921980" N	003° 35' 41.35106452" W	Survey works
Offshore Export Cable Survey Coordinates	460442.444	5915971.904	53° 23' 28.88074646" N	003° 35' 41.40942523" W	Survey works
Offshore Export Cable Survey Coordinates	460440.1322	5915969.993	53° 23' 28.81828027" N	003° 35' 41.53370260" W	Survey works
Offshore Export Cable Survey Coordinates	460437.642	5915967.845	53° 23' 28.74810031" N	003° 35' 41.66752991" W	Survey works
Offshore Export Cable Survey Coordinates	460435.4119	5915965.838	53° 23' 28.68255942" N	003° 35' 41.78734141" W	Survey works
Offshore Export Cable Survey Coordinates	460426.8817	5915957.351	53° 23' 28.40562902" N	003° 35' 42.24525717" W	Survey works
Offshore Export Cable Survey Coordinates	460419.6288	5915948.925	53° 23' 28.13103928" N	003° 35' 42.63405818" W	Survey works
Offshore Export Cable Survey Coordinates	460413.2671	5915940.346	53° 23' 27.85171951" N	003° 35' 42.97454740" W	Survey works
Offshore Export Cable Survey Coordinates	460408.3283	5915932.675	53° 23' 27.60218083" N	003° 35' 43.23842350" W	Survey works
Offshore Export Cable Survey Coordinates	460403.336	5915923.695	53° 23' 27.31024171" N	003° 35' 43.50460321" W	Survey works
Offshore Export Cable Survey Coordinates	460397.6678	5915911.254	53° 23' 26.90616428" N	003° 35' 43.80580589" W	Survey works
Offshore Export Cable Survey Coordinates	460394.7012	5915903.212	53° 23' 26.64511067" N	003° 35' 43.96275564" W	Survey works

RWE

Offshore Export Cable Survey Coordinates	460390.5492	5915888.413	53° 23' 26.16512260" N	003° 35' 44.18081871" W	Survey works
Offshore Export Cable Survey Coordinates	460388.6495	5915878.452	53° 23' 25.84232007" N	003° 35' 44.27914999" W	Survey works
Offshore Export Cable Survey Coordinates	460387.2508	5915866.179	53° 23' 25.44480536" N	003° 35' 44.34931700" W	Survey works
Offshore Export Cable Survey Coordinates	460386.8612	5915854.556	53° 23' 25.06859912" N	003° 35' 44.36515530" W	Survey works
Offshore Export Cable Survey Coordinates	460387.3134	5915843.681	53° 23' 24.71681108" N	003° 35' 44.33576516" W	Survey works
Offshore Export Cable Survey Coordinates	460388.1135	5915835.987	53° 23' 24.46808035" N	003° 35' 44.28898098" W	Survey works
Offshore Export Cable Survey Coordinates	460389.7739	5915825.919	53° 23' 24.14274445" N	003° 35' 44.19455703" W	Survey works
Offshore Export Cable Survey Coordinates	460391.6727	5915817.651	53° 23' 23.87571417" N	003° 35' 44.08804209" W	Survey works
Offshore Export Cable Survey Coordinates	460395.4033	5915805.443	53° 23' 23.48171029" N	003° 35' 43.88059501" W	Survey works
Offshore Export Cable Survey Coordinates	460398.1294	5915798.301	53° 23' 23.25134493" N	003° 35' 43.72980890" W	Survey works
Offshore Export Cable Survey Coordinates	460401.4093	5915790.899	53° 23' 23.01271914" N	003° 35' 43.54892938" W	Survey works
Offshore Export Cable Survey Coordinates	460403.4104	5915786.852	53° 23' 22.88228030" N	003° 35' 43.43878464" W	Survey works
Offshore Export Cable Survey Coordinates	460405.866	5915782.265	53° 23' 22.73452635" N	003° 35' 43.30379530" W	Survey works
Offshore Export Cable Survey Coordinates	460409.086	5915776.771	53° 23' 22.55761693" N	003° 35' 43.12702066" W	Survey works
Offshore Export Cable Survey Coordinates	460418.7022	5915762.939	53° 23' 22.11265444" N	003° 35' 42.60026651" W	Survey works
Offshore Export Cable Survey Coordinates	460427.598	5915752.574	53° 23' 21.77965651" N	003° 35' 42.11407354" W	Survey works
Offshore Export Cable Survey Coordinates	460436.029	5915744.29	53° 23' 21.51388276" N	003° 35' 41.65398048" W	Survey works
Offshore Export Cable Survey Coordinates	460443.8376	5915737.673	53° 23' 21.30184925" N	003° 35' 41.22832983" W	Survey works

RWE

Offshore Export Cable Survey Coordinates	460453.5937	5915730.579	53° 23' 21.07492817" N	003° 35' 40.69705114" W	Survey works
Offshore Export Cable Survey Coordinates	460754.0263	5915485.973	53° 23' 13.24063234" N	003° 35' 24.32574488" W	Survey works
Offshore Export Cable Survey Coordinates	460891.6099	5915369.556	53° 23' 09.51033934" N	003° 35' 16.82707380" W	Survey works
Offshore Export Cable Survey Coordinates	461865.2785	5914575.804	53° 22' 44.08224841" N	003° 34' 23.78304100" W	Survey works
Offshore Export Cable Survey Coordinates	464310.0334	5912363.883	53° 21' 33.12270095" N	003° 32' 10.58473937" W	Survey works
Offshore Export Cable Survey Coordinates	464765.1176	5911982.882	53° 21' 20.90393600" N	003° 31' 45.81614568" W	Survey works
Offshore Export Cable Survey Coordinates	465072.0349	5911908.799	53° 21' 18.58000226" N	003° 31' 29.18664556" W	Survey works
Offshore Export Cable Survey Coordinates	466896.6052	5911534.148	53° 21' 06.87931245" N	003° 29' 50.36220477" W	Survey works
Offshore Export Cable Survey Coordinates	467973.9907	5911220.881	53° 20' 56.98117243" N	003° 28' 51.98109740" W	Survey works
Offshore Export Cable Survey Coordinates	469073.4926	5910621.432	53° 20' 37.81919279" N	003° 27' 52.31085755" W	Survey works
Offshore Export Cable Survey Coordinates	469439.3071	5910421.99	53° 20' 31.44197775" N	003° 27' 32.46130163" W	Survey works
Offshore Export Cable Survey Coordinates	469529.559	5910372.785	53° 20' 29.86847990" N	003° 27' 27.56437219" W	Survey works
Offshore Export Cable Survey Coordinates	469572.8423	5910353.084	53° 20' 29.23995894" N	003° 27' 25.21727072" W	Survey works
Offshore Export Cable Survey Coordinates	469744.5273	5910252.511	53° 20' 26.02096210" N	003° 27' 15.89986793" W	Survey works
Offshore Export Cable Survey Coordinates	469751.4641	5910239.505	53° 20' 25.60151186" N	003° 27' 15.52033797" W	Survey works
Offshore Export Cable Survey Coordinates	469756.9265	5910226.759	53° 20' 25.19020358" N	003° 27' 15.22061680" W	Survey works
Offshore Export Cable Survey Coordinates	469763.7061	5910205.452	53° 20' 24.50211094" N	003° 27' 14.84673647" W	Survey works
Offshore Export Cable Survey Coordinates	469776.8146	5910173.064	53° 20' 23.45677143" N	003° 27' 14.12686798" W	Survey works

RWE

Offshore Export Cable Survey Coordinates	469789.6049	5910128.785	53° 20' 22.02655107" N	003° 27' 13.42012873" W	Survey works
Offshore Export Cable Survey Coordinates	469795.6326	5910108.69	53° 20' 21.37754406" N	003° 27' 13.08733291" W	Survey works
Offshore Export Cable Survey Coordinates	469809.8937	5910071.888	53° 20' 20.18959871" N	003° 27' 12.30365991" W	Survey works
Offshore Export Cable Survey Coordinates	469859.7882	5909925.198	53° 20' 15.45309152" N	003° 27' 09.55581881" W	Survey works
Offshore Export Cable Survey Coordinates	469871.6623	5909888.586	53° 20' 14.27079820" N	003° 27' 08.90131829" W	Survey works
Offshore Export Cable Survey Coordinates	469879.0439	5909863.502	53° 20' 13.46061238" N	003° 27' 08.49365373" W	Survey works
Offshore Export Cable Survey Coordinates	469892.0439	5909830.502	53° 20' 12.39542578" N	003° 27' 07.77953668" W	Survey works
Offshore Export Cable Survey Coordinates	469905.6287	5909806.173	53° 20' 11.61093372" N	003° 27' 07.03677991" W	Survey works
Offshore Export Cable Survey Coordinates	469909.6554	5909797.387	53° 20' 11.32747050" N	003° 27' 06.81608089" W	Survey works
Offshore Export Cable Survey Coordinates	469913.0197	5909790.047	53° 20' 11.09063371" N	003° 27' 06.63168788" W	Survey works
Offshore Export Cable Survey Coordinates	469914.6848	5909786.414	53° 20' 10.97341393" N	003° 27' 06.54042605" W	Survey works
Offshore Export Cable Survey Coordinates	469916.384	5909782.707	53° 20' 10.85379359" N	003° 27' 06.44729539" W	Survey works
Offshore Export Cable Survey Coordinates	469921.7616	5909770.974	53° 20' 10.47522482" N	003° 27' 06.15255804" W	Survey works
Offshore Export Cable Survey Coordinates	469927.1392	5909759.241	53° 20' 10.09665260" N	003° 27' 05.85782210" W	Survey works
Offshore Export Cable Survey Coordinates	469942.8371	5909717.268	53° 20' 08.74166131" N	003° 27' 04.99482028" W	Survey works
Offshore Export Cable Survey Coordinates	469944.1865	5909713.659	53° 20' 08.62516617" N	003° 27' 04.92063669" W	Survey works
Offshore Export Cable Survey Coordinates	470048.1614	5909435.648	53° 19' 59.65020218" N	003° 26' 59.20494421" W	Survey works
Offshore Export Cable Survey Coordinates	470063.1895	5909376.284	53° 19' 57.73227988" N	003° 26' 58.37235103" W	Survey works

RWE

Offshore Export Cable Survey Coordinates	470066.9463	5909362.218	53° 19' 57.27788458" N	003° 26' 58.16448187" W	Survey works
Offshore Export Cable Survey Coordinates	470070.9155	5909347.883	53° 19' 56.81484075" N	003° 26' 57.94504078" W	Survey works
Offshore Export Cable Survey Coordinates	470068.7719	5909347.932	53° 19' 56.81598990" N	003° 26' 58.06093503" W	Survey works
Offshore Export Cable Survey Coordinates	470066.6283	5909347.981	53° 19' 56.81713577" N	003° 26' 58.17682925" W	Survey works
Offshore Export Cable Survey Coordinates	470061.8774	5909347.122	53° 19' 56.78835559" N	003° 26' 58.43335844" W	Survey works
Offshore Export Cable Survey Coordinates	470056.8252	5909345.146	53° 19' 56.72339785" N	003° 26' 58.70579525" W	Survey works
Offshore Export Cable Survey Coordinates	470046.6723	5909340.022	53° 19' 56.55552118" N	003° 26' 59.25289074" W	Survey works
Offshore Export Cable Survey Coordinates	470041.3165	5909337.089	53° 19' 56.45952365" N	003° 26' 59.54141268" W	Survey works
Offshore Export Cable Survey Coordinates	470023.198	5909327.232	53° 19' 56.13685627" N	003° 27' 00.51749250" W	Survey works
Offshore Export Cable Survey Coordinates	470008.8439	5909320.681	53° 19' 55.92195345" N	003° 27' 01.29120261" W	Survey works
Offshore Export Cable Survey Coordinates	470001.2756	5909317.003	53° 19' 55.80139550" N	003° 27' 01.69906946" W	Survey works
Offshore Export Cable Survey Coordinates	469985.236	5909311.778	53° 19' 55.62903198" N	003° 27' 02.56434140" W	Survey works
Offshore Export Cable Survey Coordinates	469972.0995	5909308.975	53° 19' 55.53565298" N	003° 27' 03.27350526" W	Survey works
Offshore Export Cable Survey Coordinates	469962.1318	5909306.534	53° 19' 55.45461172" N	003° 27' 03.81149586" W	Survey works
Offshore Export Cable Survey Coordinates	469961.0992	5909306.365	53° 19' 55.44895144" N	003° 27' 03.86725760" W	Survey works
Offshore Export Cable Survey Coordinates	469955.1868	5909305.903	53° 19' 55.43276734" N	003° 27' 04.18670604" W	Survey works
Offshore Export Cable Survey Coordinates	469952.5404	5909305.932	53° 19' 55.43316485" N	003° 27' 04.32977230" W	Survey works
Offshore Export Cable Survey Coordinates	469949.5065	5909305.36	53° 19' 55.41405143" N	003° 27' 04.49358057" W	Survey works

RWE

Offshore Export Cable Survey Coordinates	469946.0188	5909304.054	53° 19' 55.37108387" N	003° 27' 04.68166906" W	Survey works
Offshore Export Cable Survey Coordinates	469939.5141	5909301.97	53° 19' 55.30231743" N	003° 27' 05.03258135" W	Survey works
Offshore Export Cable Survey Coordinates	469935.2074	5909301.455	53° 19' 55.28476202" N	003° 27' 05.26521223" W	Survey works
Offshore Export Cable Survey Coordinates	469933.5556	5909301.3	53° 19' 55.27940528" N	003° 27' 05.35445045" W	Survey works
Offshore Export Cable Survey Coordinates	469930.3246	5909300.594	53° 19' 55.25589238" N	003° 27' 05.52886701" W	Survey works
Offshore Export Cable Survey Coordinates	469926.7635	5909299.816	53° 19' 55.22999497" N	003° 27' 05.72110323" W	Survey works
Offshore Export Cable Survey Coordinates	469922.4756	5909299.029	53° 19' 55.20365106" N	003° 27' 05.95262478" W	Survey works
Offshore Export Cable Survey Coordinates	469920.0365	5909298.399	53° 19' 55.18275926" N	003° 27' 06.08425951" W	Survey works
Offshore Export Cable Survey Coordinates	469918.1207	5909298.24	53° 19' 55.17722860" N	003° 27' 06.18776738" W	Survey works
Offshore Export Cable Survey Coordinates	469916.2765	5909297.685	53° 19' 55.15889835" N	003° 27' 06.28726940" W	Survey works
Offshore Export Cable Survey Coordinates	469914.8302	5909297.069	53° 19' 55.13866267" N	003° 27' 06.36524117" W	Survey works
Offshore Export Cable Survey Coordinates	469913.5195	5909296.192	53° 19' 55.11000575" N	003° 27' 06.43579355" W	Survey works
Offshore Export Cable Survey Coordinates	469911.6047	5909295.966	53° 19' 55.10230715" N	003° 27' 06.53922440" W	Survey works
Offshore Export Cable Survey Coordinates	469910.2077	5909296.541	53° 19' 55.12064064" N	003° 27' 06.61493857" W	Survey works
Offshore Export Cable Survey Coordinates	469908.6786	5909297.05	53° 19' 55.13678226" N	003° 27' 06.69777079" W	Survey works
Offshore Export Cable Survey Coordinates	469907.2276	5909296.764	53° 19' 55.12725317" N	003° 27' 06.77610972" W	Survey works
Offshore Export Cable Survey Coordinates	469906.4458	5909295.893	53° 19' 55.09891156" N	003° 27' 06.81807354" W	Survey works
Offshore Export Cable Survey Coordinates	469905.6082	5909294.295	53° 19' 55.04701079" N	003° 27' 06.86280484" W	Survey works

RWE

Offshore Export Cable Survey Coordinates	469905.1945	5909293.628	53° 19' 55.02534903" N	003° 27' 06.88494011" W	Survey works
Offshore Export Cable Survey Coordinates	469904.9618	5909293.254	53° 19' 55.01318937" N	003° 27' 06.89739112" W	Survey works
Offshore Export Cable Survey Coordinates	469903.3855	5909292.491	53° 19' 54.98817663" N	003° 27' 06.98233991" W	Survey works
Offshore Export Cable Survey Coordinates	469901.5331	5909292.452	53° 19' 54.98653860" N	003° 27' 07.08246144" W	Survey works
Offshore Export Cable Survey Coordinates	469899.0023	5909292.65	53° 19' 54.99244368" N	003° 27' 07.21933630" W	Survey works
Offshore Export Cable Survey Coordinates	469894.4724	5909291.935	53° 19' 54.96836632" N	003° 27' 07.46396348" W	Survey works
Offshore Export Cable Survey Coordinates	469892.4942	5909291.455	53° 19' 54.95243850" N	003° 27' 07.57073451" W	Survey works
Offshore Export Cable Survey Coordinates	469889.3712	5909291.885	53° 19' 54.96569062" N	003° 27' 07.73970077" W	Survey works
Offshore Export Cable Survey Coordinates	469888.4463	5909291.739	53° 19' 54.96077997" N	003° 27' 07.78964797" W	Survey works
Offshore Export Cable Survey Coordinates	469887.3327	5909290.996	53° 19' 54.93652197" N	003° 27' 07.84959150" W	Survey works
Offshore Export Cable Survey Coordinates	469886.9411	5909290.109	53° 19' 54.90772302" N	003° 27' 07.87045643" W	Survey works
Offshore Export Cable Survey Coordinates	469886.6271	5909289.398	53° 19' 54.88467401" N	003° 27' 07.88718719" W	Survey works
Offshore Export Cable Survey Coordinates	469885.9764	5909288.662	53° 19' 54.86072116" N	003° 27' 07.92211002" W	Survey works
Offshore Export Cable Survey Coordinates	469885.5376	5909286.936	53° 19' 54.80477619" N	003° 27' 07.94523942" W	Survey works
Offshore Export Cable Survey Coordinates	469884.6944	5909285.733	53° 19' 54.76568189" N	003° 27' 07.99040843" W	Survey works
Offshore Export Cable Survey Coordinates	469883.7956	5909285.655	53° 19' 54.76295756" N	003° 27' 08.03896775" W	Survey works
Offshore Export Cable Survey Coordinates	469882.5073	5909286.034	53° 19' 54.77495450" N	003° 27' 08.10873871" W	Survey works
Offshore Export Cable Survey Coordinates	469880.9736	5909286.938	53° 19' 54.80390910" N	003° 27' 08.19195510" W	Survey works

RWE

Offshore Export Cable Survey Coordinates	469879.5766	5909287.514	53° 19' 54.82224230" N	003° 27' 08.26766931" W	Survey works
Offshore Export Cable Survey Coordinates	469873.9844	5909286.966	53° 19' 54.80338621" N	003° 27' 08.56977807" W	Survey works
Offshore Export Cable Survey Coordinates	469872.2433	5909286.544	53° 19' 54.78936412" N	003° 27' 08.66375168" W	Survey works
Offshore Export Cable Survey Coordinates	469868.0871	5909285.347	53° 19' 54.74977191" N	003° 27' 08.88801232" W	Survey works
Offshore Export Cable Survey Coordinates	469867.8959	5909285.292	53° 19' 54.74796268" N	003° 27' 08.89832924" W	Survey works
Offshore Export Cable Survey Coordinates	469866.981	5909284.784	53° 19' 54.73134641" N	003° 27' 08.94761188" W	Survey works
Offshore Export Cable Survey Coordinates	469866.0035	5909283.753	53° 19' 54.69776113" N	003° 27' 09.00009902" W	Survey works
Offshore Export Cable Survey Coordinates	469865.4169	5909283.082	53° 19' 54.67595379" N	003° 27' 09.03157917" W	Survey works
Offshore Export Cable Survey Coordinates	469864.2637	5909282.312	53° 19' 54.65079763" N	003° 27' 09.09365361" W	Survey works
Offshore Export Cable Survey Coordinates	469861.591	5909282.368	53° 19' 54.65204886" N	003° 27' 09.23814995" W	Survey works
Offshore Export Cable Survey Coordinates	469858.6574	5909282.128	53° 19' 54.64367796" N	003° 27' 09.39664840" W	Survey works
Offshore Export Cable Survey Coordinates	469855.65	5909281.232	53° 19' 54.61406427" N	003° 27' 09.55891149" W	Survey works
Offshore Export Cable Survey Coordinates	469850.9914	5909279.42	53° 19' 54.55447093" N	003° 27' 09.81011904" W	Survey works
Offshore Export Cable Survey Coordinates	469845.5556	5909276.487	53° 19' 54.45844668" N	003° 27' 10.10295511" W	Survey works
Offshore Export Cable Survey Coordinates	469836.0281	5909271.035	53° 19' 54.28009595" N	003° 27' 10.61611092" W	Survey works
Offshore Export Cable Survey Coordinates	469827.5892	5909267.186	53° 19' 54.15381059" N	003° 27' 11.07096897" W	Survey works
Offshore Export Cable Survey Coordinates	469816.9299	5909263.148	53° 19' 54.02095300" N	003° 27' 11.64578841" W	Survey works
Offshore Export Cable Survey Coordinates	469810.0686	5909260.035	53° 19' 53.91881334" N	003° 27' 12.01561802" W	Survey works

RWE

Offshore Export Cable Survey Coordinates	469797.8928	5909256.611	53° 19' 53.80550172" N	003° 27' 12.67262287" W	Survey works
Offshore Export Cable Survey Coordinates	469791.0883	5909255.087	53° 19' 53.75478179" N	003° 27' 13.03992626" W	Survey works
Offshore Export Cable Survey Coordinates	469787.9918	5909255.123	53° 19' 53.75533301" N	003° 27' 13.20732438" W	Survey works
Offshore Export Cable Survey Coordinates	469783.6134	5909256.014	53° 19' 53.78325213" N	003° 27' 13.44431055" W	Survey works
Offshore Export Cable Survey Coordinates	469781.9956	5909258.214	53° 19' 53.85411936" N	003° 27' 13.53251851" W	Survey works
Offshore Export Cable Survey Coordinates	469779.9165	5909259.296	53° 19' 53.88869806" N	003° 27' 13.64527867" W	Survey works
Offshore Export Cable Survey Coordinates	469779.8311	5909259.255	53° 19' 53.88735054" N	003° 27' 13.64988097" W	Survey works
Offshore Export Cable Survey Coordinates	469777.8663	5909258.315	53° 19' 53.85651286" N	003° 27' 13.75576799" W	Survey works
Offshore Export Cable Survey Coordinates	469774.4139	5909255.488	53° 19' 53.76434647" N	003° 27' 13.94142152" W	Survey works
Offshore Export Cable Survey Coordinates	469769.3128	5909251.29	53° 19' 53.62744748" N	003° 27' 14.21572619" W	Survey works
Offshore Export Cable Survey Coordinates	469764.9821	5909248.847	53° 19' 53.54751643" N	003° 27' 14.44898863" W	Survey works
Offshore Export Cable Survey Coordinates	469760.7159	5909247.439	53° 19' 53.50105463" N	003° 27' 14.67911948" W	Survey works
Offshore Export Cable Survey Coordinates	469756.2796	5909246.821	53° 19' 53.48014082" N	003° 27' 14.91871687" W	Survey works
Offshore Export Cable Survey Coordinates	469751.382	5909245.086	53° 19' 53.42300624" N	003° 27' 15.18286659" W	Survey works
Offshore Export Cable Survey Coordinates	469748.3856	5909243.694	53° 19' 53.37734899" N	003° 27' 15.34436221" W	Survey works
Offshore Export Cable Survey Coordinates	469746.8022	5909243.434	53° 19' 53.36860653" N	003° 27' 15.42986542" W	Survey works
Offshore Export Cable Survey Coordinates	469746.0006	5909243.979	53° 19' 53.38606757" N	003° 27' 15.47338415" W	Survey works
Offshore Export Cable Survey Coordinates	469745.2635	5909245.556	53° 19' 53.43693649" N	003° 27' 15.51377108" W	Survey works

RWE

Offshore Export Cable Survey Coordinates	469744.0538	5909246.968	53° 19' 53.48237859" N	003° 27' 15.57964839" W	Survey works
Offshore Export Cable Survey Coordinates	469743.0854	5909248.065	53° 19' 53.51769017" N	003° 27' 15.63237379" W	Survey works
Offshore Export Cable Survey Coordinates	469743.1543	5909248.86	53° 19' 53.54342662" N	003° 27' 15.62892263" W	Survey works
Offshore Export Cable Survey Coordinates	469743.9316	5909249.982	53° 19' 53.57988706" N	003° 27' 15.58729038" W	Survey works
Offshore Export Cable Survey Coordinates	469745.5137	5909250.401	53° 19' 53.59377762" N	003° 27' 15.50191204" W	Survey works
Offshore Export Cable Survey Coordinates	469747.5628	5909251.461	53° 19' 53.62851941" N	003° 27' 15.39150989" W	Survey works
Offshore Export Cable Survey Coordinates	469748.8981	5909252.433	53° 19' 53.66023756" N	003° 27' 15.31966254" W	Survey works
Offshore Export Cable Survey Coordinates	469749.5775	5909254.903	53° 19' 53.74028497" N	003° 27' 15.28378555" W	Survey works
Offshore Export Cable Survey Coordinates	469749.9478	5909256.813	53° 19' 53.80217033" N	003° 27' 15.26442509" W	Survey works
Offshore Export Cable Survey Coordinates	469750.8062	5909257.857	53° 19' 53.83612988" N	003° 27' 15.21838197" W	Survey works
Offshore Export Cable Survey Coordinates	469758.926	5909261.859	53° 19' 53.96732110" N	003° 27' 14.78083045" W	Survey works
Offshore Export Cable Survey Coordinates	469766.6544	5909265.46	53° 19' 54.08543596" N	003° 27' 14.36429790" W	Survey works
Offshore Export Cable Survey Coordinates	469771.2285	5909267.588	53° 19' 54.15523683" N	003° 27' 14.11776919" W	Survey works
Offshore Export Cable Survey Coordinates	469773.1031	5909269.757	53° 19' 54.22581570" N	003° 27' 14.01717998" W	Survey works
Offshore Export Cable Survey Coordinates	469774.0872	5909273.105	53° 19' 54.33434343" N	003° 27' 13.96513280" W	Survey works
Offshore Export Cable Survey Coordinates	469775.0703	5909275.097	53° 19' 54.39899523" N	003° 27' 13.91267389" W	Survey works
Offshore Export Cable Survey Coordinates	469775.3055	5909275.574	53° 19' 54.41448212" N	003° 27' 13.90012366" W	Survey works
Offshore Export Cable Survey Coordinates	469775.8628	5909276.701	53° 19' 54.45106544" N	003° 27' 13.87038500" W	Survey works

RWE

Offshore Export Cable Survey Coordinates	469776.7156	5909278.142	53° 19' 54.49786703" N	003° 27' 13.82478042" W	Survey works
Offshore Export Cable Survey Coordinates	469776.6956	5909279.57	53° 19' 54.54409115" N	003° 27' 13.82635221" W	Survey works
Offshore Export Cable Survey Coordinates	469774.9967	5909281.849	53° 19' 54.61746240" N	003° 27' 13.91897154" W	Survey works
Offshore Export Cable Survey Coordinates	469773.0858	5909281.704	53° 19' 54.61238388" N	003° 27' 14.02221867" W	Survey works
Offshore Export Cable Survey Coordinates	469770.4806	5909281.507	53° 19' 54.60548961" N	003° 27' 14.16297958" W	Survey works
Offshore Export Cable Survey Coordinates	469764.9455	5909279.803	53° 19' 54.54919838" N	003° 27' 14.46160296" W	Survey works
Offshore Export Cable Survey Coordinates	469761.8001	5909277.695	53° 19' 54.48033839" N	003° 27' 14.63090834" W	Survey works
Offshore Export Cable Survey Coordinates	469751.5555	5909272.393	53° 19' 54.30665621" N	003° 27' 15.18287412" W	Survey works
Offshore Export Cable Survey Coordinates	469745.0234	5909268.411	53° 19' 54.17648061" N	003° 27' 15.53460808" W	Survey works
Offshore Export Cable Survey Coordinates	469743.5066	5909267.639	53° 19' 54.15116453" N	003° 27' 15.61633530" W	Survey works
Offshore Export Cable Survey Coordinates	469735.0935	5909263.351	53° 19' 54.01070268" N	003° 27' 16.06964351" W	Survey works
Offshore Export Cable Survey Coordinates	469719.0095	5909255.586	53° 19' 53.75609276" N	003° 27' 16.93641502" W	Survey works
Offshore Export Cable Survey Coordinates	469717.8421	5909253.903	53° 19' 53.70141454" N	003° 27' 16.99894150" W	Survey works
Offshore Export Cable Survey Coordinates	469717.5463	5909252.39	53° 19' 53.65239103" N	003° 27' 17.01441067" W	Survey works
Offshore Export Cable Survey Coordinates	469718.4436	5909250.657	53° 19' 53.59648781" N	003° 27' 16.96530948" W	Survey works
Offshore Export Cable Survey Coordinates	469720.2669	5909250.841	53° 19' 53.60283364" N	003° 27' 16.86681212" W	Survey works
Offshore Export Cable Survey Coordinates	469722.6385	5909251.51	53° 19' 53.62494449" N	003° 27' 16.73884211" W	Survey works
Offshore Export Cable Survey Coordinates	469724.1529	5909251.055	53° 19' 53.61053947" N	003° 27' 16.65682276" W	Survey works

RWE

Offshore Export Cable Survey Coordinates	469724.5654	5909249.949	53° 19' 53.57482877" N	003° 27' 16.63414396" W	Survey works
Offshore Export Cable Survey Coordinates	469724.4275	5909248.439	53° 19' 53.52594134" N	003° 27' 16.64107885" W	Survey works
Offshore Export Cable Survey Coordinates	469723.3523	5909245.884	53° 19' 53.44304558" N	003° 27' 16.69832112" W	Survey works
Offshore Export Cable Survey Coordinates	469721.4448	5909244.066	53° 19' 53.38383354" N	003° 27' 16.80080797" W	Survey works
Offshore Export Cable Survey Coordinates	469718.6315	5909242.881	53° 19' 53.34489879" N	003° 27' 16.95247647" W	Survey works
Offshore Export Cable Survey Coordinates	469715.9981	5909242.984	53° 19' 53.34769254" N	003° 27' 17.09486357" W	Survey works
Offshore Export Cable Survey Coordinates	469715.2881	5909243.628	53° 19' 53.36838554" N	003° 27' 17.13346511" W	Survey works
Offshore Export Cable Survey Coordinates	469714.2285	5909245.597	53° 19' 53.43188558" N	003° 27' 17.19142076" W	Survey works
Offshore Export Cable Survey Coordinates	469713.4859	5909247.572	53° 19' 53.49562890" N	003° 27' 17.23224252" W	Survey works
Offshore Export Cable Survey Coordinates	469713.0845	5909247.883	53° 19' 53.50561959" N	003° 27' 17.25404784" W	Survey works
Offshore Export Cable Survey Coordinates	469711.8214	5909247.389	53° 19' 53.48938689" N	003° 27' 17.32215642" W	Survey works
Offshore Export Cable Survey Coordinates	469708.6159	5909243.931	53° 19' 53.37683505" N	003° 27' 17.49424350" W	Survey works
Offshore Export Cable Survey Coordinates	469705.466	5909242.141	53° 19' 53.31826314" N	003° 27' 17.66389896" W	Survey works
Offshore Export Cable Survey Coordinates	469701.6713	5909241.056	53° 19' 53.28236820" N	003° 27' 17.86865241" W	Survey works
Offshore Export Cable Survey Coordinates	469696.1232	5909240.503	53° 19' 53.26330736" N	003° 27' 18.16837085" W	Survey works
Offshore Export Cable Survey Coordinates	469691.906	5909241.237	53° 19' 53.28618630" N	003° 27' 18.39658932" W	Survey works
Offshore Export Cable Survey Coordinates	469690.2725	5909241.698	53° 19' 53.30077030" N	003° 27' 18.48504892" W	Survey works
Offshore Export Cable Survey Coordinates	469686.0087	5909242.901	53° 19' 53.33882884" N	003° 27' 18.71594821" W	Survey works

RWE

Offshore Export Cable Survey Coordinates	469682.9178	5909242.619	53° 19' 53.32905644" N	003° 27' 18.88293327" W	Survey works
Offshore Export Cable Survey Coordinates	469677.3831	5909241.033	53° 19' 53.27661276" N	003° 27' 19.18157182" W	Survey works
Offshore Export Cable Survey Coordinates	469668.4626	5909237.575	53° 19' 53.16288110" N	003° 27' 19.66258813" W	Survey works
Offshore Export Cable Survey Coordinates	469666.7259	5909237.191	53° 19' 53.15006773" N	003° 27' 19.75633476" W	Survey works
Offshore Export Cable Survey Coordinates	469663.873	5909236.558	53° 19' 53.12901836" N	003° 27' 19.91033353" W	Survey works
Offshore Export Cable Survey Coordinates	469652.1885	5909232.109	53° 19' 52.98262802" N	003° 27' 20.54041790" W	Survey works
Offshore Export Cable Survey Coordinates	469640.5565	5909229.485	53° 19' 52.89532238" N	003° 27' 21.16829294" W	Survey works
Offshore Export Cable Survey Coordinates	469637.083	5909228.166	53° 19' 52.85193627" N	003° 27' 21.35560164" W	Survey works
Offshore Export Cable Survey Coordinates	469632.977	5909226.601	53° 19' 52.80043319" N	003° 27' 21.57701549" W	Survey works
Offshore Export Cable Survey Coordinates	469630.7603	5909225.364	53° 19' 52.75993410" N	003° 27' 21.69641441" W	Survey works
Offshore Export Cable Survey Coordinates	469625.1017	5909222.205	53° 19' 52.65655227" N	003° 27' 22.00120537" W	Survey works
Offshore Export Cable Survey Coordinates	469617.8647	5909217.5	53° 19' 52.50280065" N	003° 27' 22.39078385" W	Survey works
Offshore Export Cable Survey Coordinates	469613.842	5909215.698	53° 19' 52.44365162" N	003° 27' 22.60761223" W	Survey works
Offshore Export Cable Survey Coordinates	469606.5661	5909213.85	53° 19' 52.38235433" N	003° 27' 23.00027922" W	Survey works
Offshore Export Cable Survey Coordinates	469603.1954	5909213.046	53° 19' 52.35563420" N	003° 27' 23.18220751" W	Survey works
Offshore Export Cable Survey Coordinates	469601.2659	5909212.585	53° 19' 52.34031767" N	003° 27' 23.28634903" W	Survey works
Offshore Export Cable Survey Coordinates	469596.9164	5909211.413	53° 19' 52.30149654" N	003° 27' 23.52106004" W	Survey works
Offshore Export Cable Survey Coordinates	469588.5953	5909210.502	53° 19' 52.27031563" N	003° 27' 23.97054937" W	Survey works

RWE

Offshore Export Cable Survey Coordinates	469580.4889	5909211.183	53° 19' 52.29065555" N	003° 27' 24.40898263" W	Survey works
Offshore Export Cable Survey Coordinates	469578.0361	5909210.671	53° 19' 52.27360277" N	003° 27' 24.54139399" W	Survey works
Offshore Export Cable Survey Coordinates	469576.6455	5909209.856	53° 19' 52.24692937" N	003° 27' 24.61628211" W	Survey works
Offshore Export Cable Survey Coordinates	469575.8621	5909209.105	53° 19' 52.22246554" N	003° 27' 24.65836979" W	Survey works
Offshore Export Cable Survey Coordinates	469574.7965	5909205.862	53° 19' 52.11731089" N	003° 27' 24.71485050" W	Survey works
Offshore Export Cable Survey Coordinates	469573.7588	5909204.342	53° 19' 52.06789732" N	003° 27' 24.77041848" W	Survey works
Offshore Export Cable Survey Coordinates	469572.6507	5909204.138	53° 19' 52.06108289" N	003° 27' 24.83024729" W	Survey works
Offshore Export Cable Survey Coordinates	469571.295	5909204.545	53° 19' 52.07397244" N	003° 27' 24.90367139" W	Survey works
Offshore Export Cable Survey Coordinates	469568.2769	5909205.627	53° 19' 52.10835054" N	003° 27' 25.06719110" W	Survey works
Offshore Export Cable Survey Coordinates	469566.5601	5909205.471	53° 19' 52.10294388" N	003° 27' 25.15994004" W	Survey works
Offshore Export Cable Survey Coordinates	469565.1831	5909204.616	53° 19' 52.07498529" N	003° 27' 25.23407905" W	Survey works
Offshore Export Cable Survey Coordinates	469564.2697	5909203.719	53° 19' 52.04577654" N	003° 27' 25.28314340" W	Survey works
Offshore Export Cable Survey Coordinates	469562.6359	5909201.353	53° 19' 51.96888309" N	003° 27' 25.37064139" W	Survey works
Offshore Export Cable Survey Coordinates	469561.8009	5909200.494	53° 19' 51.94092667" N	003° 27' 25.41548093" W	Survey works
Offshore Export Cable Survey Coordinates	469560.7556	5909199.733	53° 19' 51.91606554" N	003° 27' 25.47172192" W	Survey works
Offshore Export Cable Survey Coordinates	469558.9064	5909199.396	53° 19' 51.90478084" N	003° 27' 25.57156516" W	Survey works
Offshore Export Cable Survey Coordinates	469556.9225	5909199.317	53° 19' 51.90182012" N	003° 27' 25.67877897" W	Survey works
Offshore Export Cable Survey Coordinates	469555.8932	5909199.195	53° 19' 51.89764620" N	003° 27' 25.73437614" W	Survey works

RWE

Offshore Export Cable Survey Coordinates	469554.9482	5909198.628	53° 19' 51.87909641" N	003° 27' 25.78526253" W	Survey works
Offshore Export Cable Survey Coordinates	469553.513	5909197.219	53° 19' 51.83320519" N	003° 27' 25.86235576" W	Survey works
Offshore Export Cable Survey Coordinates	469552.4403	5909196.342	53° 19' 51.80460408" N	003° 27' 25.92003783" W	Survey works
Offshore Export Cable Survey Coordinates	469551.7289	5909196.121	53° 19' 51.79730537" N	003° 27' 25.95841655" W	Survey works
Offshore Export Cable Survey Coordinates	469545.8944	5909201.747	53° 19' 51.97816855" N	003° 27' 26.27575138" W	Survey works
Offshore Export Cable Survey Coordinates	469396.7592	5909337.713	53° 19' 56.34692452" N	003° 27' 34.38464329" W	Survey works
Offshore Export Cable Survey Coordinates	469395.1486	5909345.288	53° 19' 56.59170931" N	003° 27' 34.47434247" W	Survey works
Offshore Export Cable Survey Coordinates	469393.0855	5909354.95	53° 19' 56.90393976" N	003° 27' 34.58922890" W	Survey works
Offshore Export Cable Survey Coordinates	469391.0223	5909364.612	53° 19' 57.21616692" N	003° 27' 34.70412116" W	Survey works
Offshore Export Cable Survey Coordinates	469390.3752	5909366.807	53° 19' 57.28704743" N	003° 27' 34.73986521" W	Survey works
Offshore Export Cable Survey Coordinates	469389.2648	5909372.702	53° 19' 57.47759245" N	003° 27' 34.80194165" W	Survey works
Offshore Export Cable Survey Coordinates	469381.2865	5909375.644	53° 19' 57.57112804" N	003° 27' 35.23425326" W	Survey works
Offshore Export Cable Survey Coordinates	469210.0509	5909429.796	53° 19' 59.28766954" N	003° 27' 44.50979415" W	Survey works
Offshore Export Cable Survey Coordinates	469003.9733	5909513.296	53° 20' 01.94634081" N	003° 27' 55.67939679" W	Survey works
Offshore Export Cable Survey Coordinates	468707.1582	5909648.392	53° 20' 06.25502091" N	003° 28' 11.77300877" W	Survey works
Offshore Export Cable Survey Coordinates	467627.2205	5910292.258	53° 20' 26.85594553" N	003° 29' 10.39195761" W	Survey works
Offshore Export Cable Survey Coordinates	466596.5671	5910632.843	53° 20' 37.64624117" N	003° 30' 06.24631152" W	Survey works
Offshore Export Cable Survey Coordinates	464866.817	5910944.986	53° 20' 47.34336945" N	003° 31' 39.90073291" W	Survey works

RWE

Offshore Export Cable Survey Coordinates	464239.825	5911059.099	53° 20' 50.88463960" N	003° 32' 13.85143885" W	Survey works
Offshore Export Cable Survey Coordinates	461276.2772	5913658.866	53° 22' 14.25751926" N	003° 34' 55.25241126" W	Survey works
Offshore Export Cable Survey Coordinates	459527.133	5915050.623	53° 22' 58.82022808" N	003° 36' 30.53072726" W	Survey works
Offshore Export Cable Survey Coordinates	459392.1952	5915229.217	53° 23' 04.56189616" N	003° 36' 37.91624208" W	Survey works
Offshore Export Cable Survey Coordinates	459316.7888	5915352.248	53° 23' 08.52205989" N	003° 36' 42.05445509" W	Survey works
Offshore Export Cable Survey Coordinates	459253.2886	5915491.155	53° 23' 12.99917269" N	003° 36' 45.55583555" W	Survey works
Offshore Export Cable Survey Coordinates	459189.7886	5915618.155	53° 23' 17.09099503" N	003° 36' 49.05186980" W	Survey works
Offshore Export Cable Survey Coordinates	459134.226	5915741.187	53° 23' 21.05657671" N	003° 36' 52.11660666" W	Survey works
Offshore Export Cable Survey Coordinates	459090.5696	5915864.218	53° 23' 25.02545625" N	003° 36' 54.53702868" W	Survey works
Offshore Export Cable Survey Coordinates	459066.7571	5915979.312	53° 23' 28.74301875" N	003° 36' 55.87970789" W	Survey works
Offshore Export Cable Survey Coordinates	459062.7883	5916078.531	53° 23' 31.95243029" N	003° 36' 56.14086424" W	Survey works
Offshore Export Cable Survey Coordinates	459066.7571	5916209.5	53° 23' 36.19142408" N	003° 36' 55.98717057" W	Survey works
Offshore Export Cable Survey Coordinates	459100.3784	5916386.847	53° 23' 41.93939438" N	003° 36' 54.24987754" W	Survey works
Offshore Export Cable Survey Coordinates	458631.2225	5916552.033	53° 23' 47.15287358" N	003° 37' 19.72565942" W	Survey works
Offshore Export Cable Survey Coordinates	458487.531	5916598.654	53° 23' 48.62083374" N	003° 37' 27.52675981" W	Survey works
Offshore Export Cable Survey Coordinates	458050.9814	5916734.648	53° 23' 52.89709018" N	003° 37' 51.22551391" W	Survey works
Offshore Export Cable Survey Coordinates	457444.7006	5916938.619	53° 23' 59.32245137" N	003° 38' 24.14788838" W	Survey works
Offshore Export Cable Survey Coordinates	456953.2184	5917101.412	53° 24' 04.44658623" N	003° 38' 50.83719982" W	Survey works

RWE

Offshore Export Cable Survey Coordinates	455873.7354	5917458.96	53° 24' 15.69510609" N	003° 39' 49.46334651" W	Survey works
Offshore Export Cable Survey Coordinates	455048.8156	5917764.614	53° 24' 25.33472141" N	003° 40' 34.28668636" W	Survey works
Offshore Export Cable Survey Coordinates	454150.8879	5918097.319	53° 24' 35.82209071" N	003° 41' 23.08338394" W	Survey works
Offshore Export Cable Survey Coordinates	453061.7418	5918497.007	53° 24' 48.41018402" N	003° 42' 22.27840998" W	Survey works
Offshore Export Cable Survey Coordinates	452856.2555	5918572.388	53° 24' 50.78337182" N	003° 42' 33.44764544" W	Survey works
Offshore Export Cable Survey Coordinates	452196.7547	5918803.908	53° 24' 58.06106252" N	003° 43' 09.29153123" W	Survey works
Offshore Export Cable Survey Coordinates	451984.1329	5918878.549	53° 25' 00.40673793" N	003° 43' 20.84825110" W	Survey works
Offshore Export Cable Survey Coordinates	451771.5111	5918953.191	53° 25' 02.75209801" N	003° 43' 32.40532165" W	Survey works
Offshore Export Cable Survey Coordinates	451346.2675	5919102.473	53° 25' 07.44188507" N	003° 43' 55.52051484" W	Survey works
Offshore Export Cable Survey Coordinates	450427.2473	5919440.569	53° 25' 18.07360523" N	003° 44' 45.48973858" W	Survey works
Offshore Export Cable Survey Coordinates	450422.8854	5919442.174	53° 25' 18.12405256" N	003° 44' 45.72692143" W	Survey works
Offshore Export Cable Survey Coordinates	450927.6738	5919780.55	53° 25' 29.24281227" N	003° 44' 18.57339816" W	Survey works
Offshore Export Cable Survey Coordinates	451819.2703	5920385.122	53° 25' 49.10087874" N	003° 43' 30.60690055" W	Survey works
Offshore Export Cable Survey Coordinates	451893.72	5920435.605	53° 25' 50.75881737" N	003° 43' 26.60106007" W	Survey works
Offshore Export Cable Survey Coordinates	451968.1696	5920486.088	53° 25' 52.41671557" N	003° 43' 22.59513815" W	Survey works
Offshore Export Cable Survey Coordinates	452042.6192	5920536.57	53° 25' 54.07457984" N	003° 43' 18.58912951" W	Survey works
Offshore Export Cable Survey Coordinates	452079.844	5920561.812	53° 25' 54.90349643" N	003° 43' 16.58609261" W	Survey works
Offshore Export Cable Survey Coordinates	452117.0688	5920587.053	53° 25' 55.73240373" N	003° 43' 14.58303402" W	Survey works

RWE

Offshore Export Cable Survey Coordinates	452154.2937	5920612.294	53° 25' 56.56130500" N	003° 43' 12.57994836" W	Survey works
Offshore Export Cable Survey Coordinates	452191.5185	5920637.536	53° 25' 57.39019371" N	003° 43' 10.57684637" W	Survey works
Offshore Export Cable Survey Coordinates	452228.7433	5920662.777	53° 25' 58.21907637" N	003° 43' 08.57372274" W	Survey works
Offshore Export Cable Survey Coordinates	452265.9681	5920688.018	53° 25' 59.04794651" N	003° 43' 06.57057735" W	Survey works
Offshore Export Cable Survey Coordinates	452303.193	5920713.26	53° 25' 59.87681062" N	003° 43' 04.56740491" W	Survey works
Offshore Export Cable Survey Coordinates	452340.4178	5920738.501	53° 26' 00.70566217" N	003° 43' 02.56421612" W	Survey works
Offshore Export Cable Survey Coordinates	452431.1702	5920800.094	53° 26' 02.72814598" N	003° 42' 57.68047098" W	Survey works
Offshore Export Cable Survey Coordinates	452414.8674	5920788.984	53° 26' 02.36333739" N	003° 42' 58.55777346" W	Survey works
Offshore Export Cable Survey Coordinates	452521.9225	5920861.688	53° 26' 04.75057453" N	003° 42' 52.79660218" W	Survey works
Offshore Export Cable Survey Coordinates	452628.9777	5920934.392	53° 26' 07.13773484" N	003° 42' 47.03524573" W	Survey works
Offshore Export Cable Survey Coordinates	452682.5054	5920970.744	53° 26' 08.33128621" N	003° 42' 44.15449469" W	Survey works
Offshore Export Cable Survey Coordinates	452736.033	5921007.096	53° 26' 09.52481832" N	003° 42' 41.27370412" W	Survey works
Offshore Export Cable Survey Coordinates	452797.0124	5921048.509	53° 26' 10.88448272" N	003° 42' 37.99181194" W	Survey works
Offshore Export Cable Survey Coordinates	452843.0882	5921079.8	53° 26' 11.91182166" N	003° 42' 35.51198813" W	Survey works
Offshore Export Cable Survey Coordinates	452898.1021	5921117.162	53° 26' 13.13843542" N	003° 42' 32.55106751" W	Survey works
Offshore Export Cable Survey Coordinates	452937.8762	5921144.174	53° 26' 14.02524595" N	003° 42' 30.41034349" W	Survey works
Offshore Export Cable Survey Coordinates	452977.6503	5921171.185	53° 26' 14.91204263" N	003° 42' 28.26959461" W	Survey works
Offshore Export Cable Survey Coordinates	453017.4244	5921198.197	53° 26' 15.79883193" N	003° 42' 26.12882097" W	Survey works

RWE

Offshore Export Cable Survey Coordinates	453057.1984	5921225.209	53° 26' 16.68560736" N	003° 42' 23.98802788" W	Survey works
Offshore Export Cable Survey Coordinates	453271.3087	5921370.617	53° 26' 21.45908230" N	003° 42' 12.46334313" W	Survey works
Offshore Export Cable Survey Coordinates	453381.337	5921445.34	53° 26' 23.91196062" N	003° 42' 06.54068810" W	Survey works
Offshore Export Cable Survey Coordinates	453552.103	5921561.156	53° 26' 27.71371773" N	003° 41' 57.34815755" W	Survey works
Offshore Export Cable Survey Coordinates	453791.5452	5921723.812	53° 26' 33.05256805" N	003° 41' 44.45807731" W	Survey works
Offshore Export Cable Survey Coordinates	453832.5151	5921751.644	53° 26' 33.96603712" N	003° 41' 42.25242235" W	Survey works
Offshore Export Cable Survey Coordinates	453996.3708	5921862.956	53° 26' 37.61936285" N	003° 41' 33.43082740" W	Survey works
Offshore Export Cable Survey Coordinates	454160.2264	5921974.268	53° 26' 41.27250508" N	003° 41' 24.60881652" W	Survey works
Offshore Export Cable Survey Coordinates	454240.5272	5922028.819	53° 26' 43.06273891" N	003° 41' 20.28525522" W	Survey works
Offshore Export Cable Survey Coordinates	454293.1499	5922064.567	53° 26' 44.23588836" N	003° 41' 17.45188519" W	Survey works
Offshore Export Cable Survey Coordinates	454320.828	5922083.37	53° 26' 44.85292622" N	003° 41' 15.96159268" W	Survey works

For figure of survey area please see Figure 1 enclosed at the end of the NtM document

Additional information

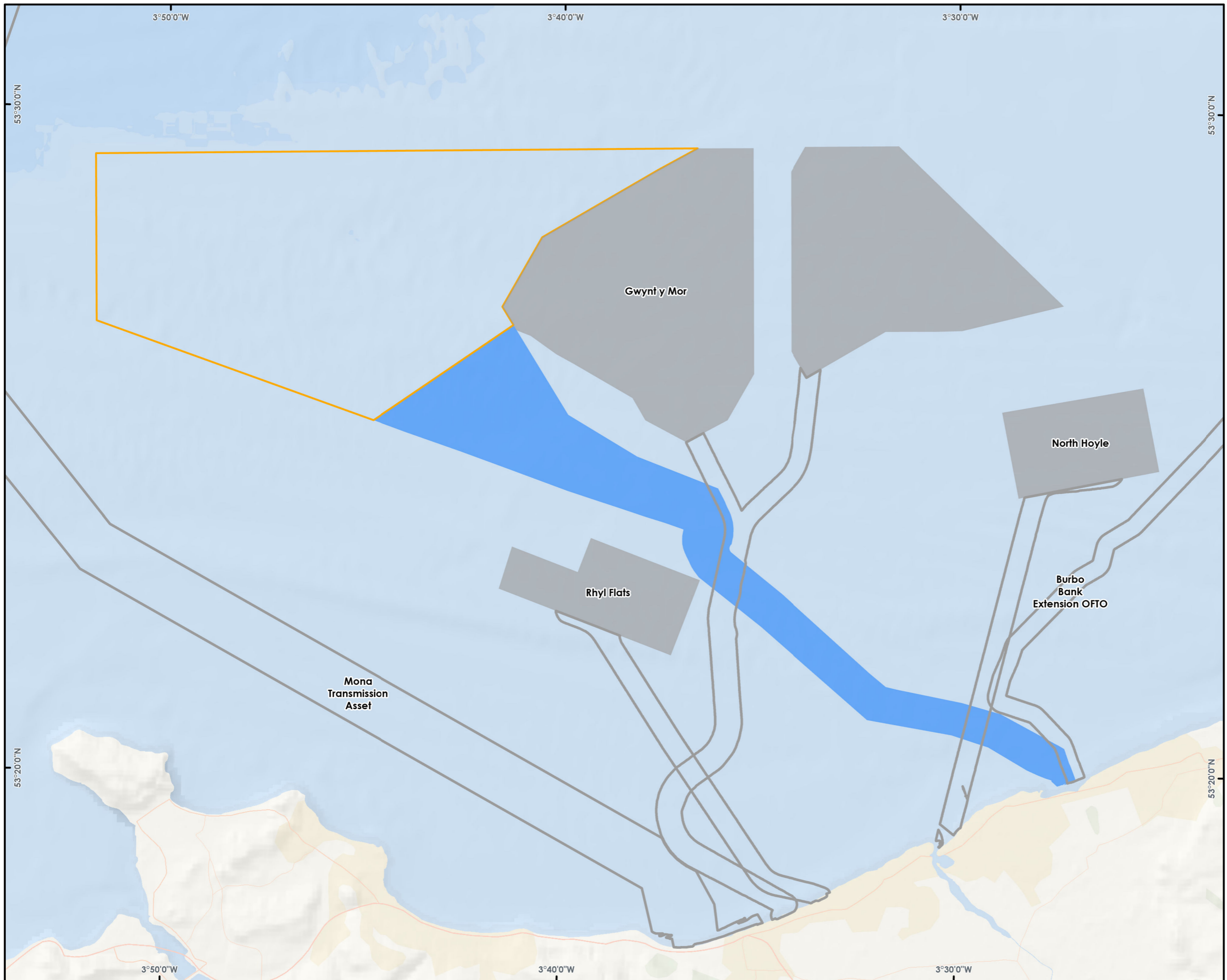
All mariners are requested to contact project Marine Coordination and monitor VHF CH16 when navigating or operating in the vicinity of the survey area.

Contact details

RWE PM: Nick Wood +44 7989 493826. Email: nicholas.wood@rwe.com

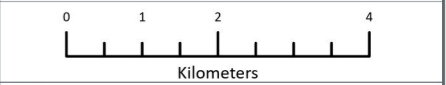
GEO PM: Caroline Frank Nielsen +45 3174 0239, email: cfn@geo.dk

Survey Vessel: Connector, Bridge Master +881 641 706 694 (Iridium Phone), Email: Master.connector@tsmvessel.com or Bridge.connector@tsmvessel.com



LEGEND

- Offshore Export Cable Corridor Survey Area
- Turbine Survey Array Area
- The Crown Estate Wind Cable Agreements
- The Crown Estate Wind Site Agreements



Data Source:
© British Crown and OceanWise, 2026. All rights reserved. License No. EHS-EX001-903042
OceanWise, Esri, Garmin, NaturalVue

PROJECT TITLE:
AWEL Y MÔR OFFSHORE WIND FARM

DRAWING TITLE:
Offshore Export Cable Corridor Survey Area

VER	DATE	REMARKS	Drawn	Checked
1	23/03/2026	For Information	JB	CD
2	19/05/2026	For Information	JB	SP

DRAWING NUMBER: **006734885-02**

SCALE: 1:100,000 | PLOT SIZE: A3 | DATUM: WGS84 | PROJECTION: UTMN30

