

RWE Rhyl Flats  
Port of Mostyn  
Coast Road  
Mostyn  
Flintshire CH8 9HE  
Tel: 08450714475

Ops\_RhylFlats@rwe.com - OperationsTeam

Issue **02-2025**  
Date: **17/07/2025**

# NOTICE TO MARINERS

## Introduction:

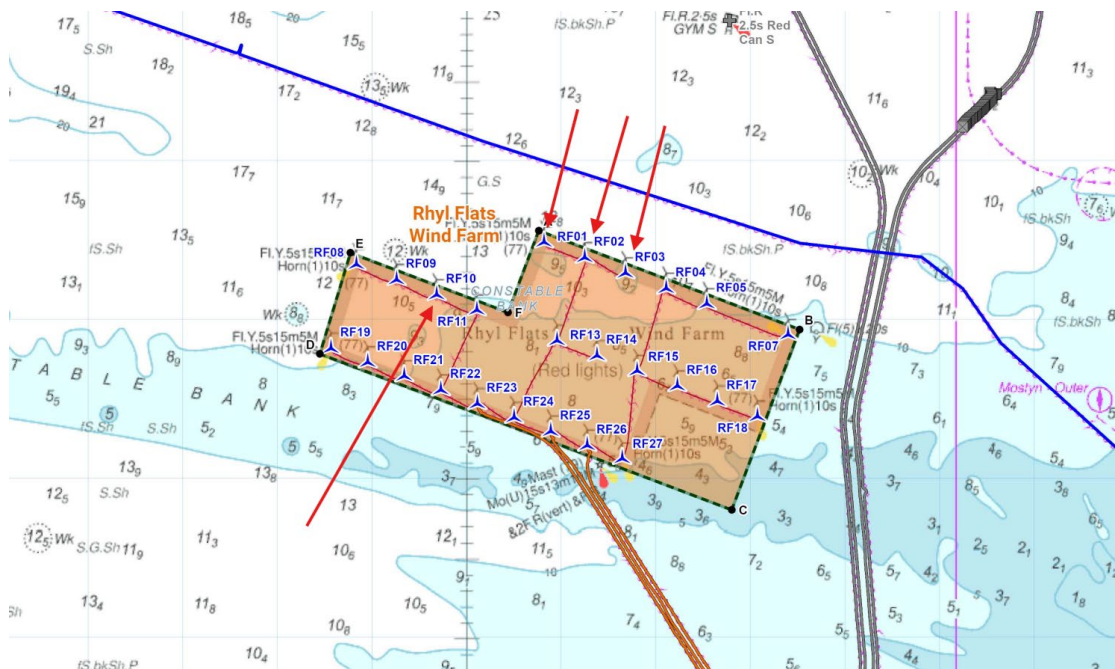
Please be advised that Rhyl Flats Wind Farm will be carrying out maintenance operations involving major component exchange utilising heavy lift Jack up Barge, at Rhyl Flats Wind Farm situated off the North Wales Coast.

## Date & Location:

Operations will take place at locations RF01, RF02, RF03 & RF10 and will commence on or around **31<sup>st</sup> July 2025** and will take approximately 4 days to complete subject to weather.

## Rhyl Flats Offshore Windfarm

REF	LATITUDE	LONGITUDE
RF02	53°23.388'N	03°38.750'W
RF01	53°23.485'N	03°39.180'W
RF03	53°23.291'N	03°38.320'W
RF10	53°23.154'N	03°40.316'W



### **Vessel Details:**

**MPI Resolution** is a 6 legged Jack-Up platform (Wind Farm Installation Vessel) measuring 130 metres in length by 38 metres in width. It has a 4.3 metre draft, coloured blue and white. When jacked up the MPI Resolution will be marked and displaying lights and day symbols in accordance with an Offshore Structure.



### **Requirements:**

Mariners are requested to keep well clear and pass slowly, particularly when the craft is manoeuvring or during lifting operations.

Vessels are requested to:-

- (1) Give the MPI Resolution a wide berth of 500m during these operations
- (2) Gain permission from MPI Resolution prior to access / approach if required within the 500m zone

### **Vessel Contact details:**

**MPI Resolution**

IMO Number: 9260134

callsign: PCJM

E-mail: [0853.bdg@vanoord.com](mailto:0853.bdg@vanoord.com) / [0853.cpt@vanoord.com](mailto:0853.cpt@vanoord.com)

Further details are available from RWE Renewables Ltd at:

RWE Rhyl Flats,  
Port of Mostyn,  
Holywell,  
Flintshire,  
CH8 9HE  
**Tel: 0845 071 4475**

### **Distribution List:**

Radio Navigation Warnings

- [Offshore.energy@ukho.gov.uk](mailto:Offshore.energy@ukho.gov.uk)

The UKHO

Trinity House

Kingfisher

Operations Rhyl Flats

+ local mariners as per email distribution

- [navwarnings@ukho.gov.uk](mailto:navwarnings@ukho.gov.uk)

- [sdr@ukho.gov.uk](mailto:sdr@ukho.gov.uk)

- [navigation.directorate@thls.org](mailto:navigation.directorate@thls.org)

- [kingfisher@seafish.co.uk](mailto:kingfisher@seafish.co.uk)

- [\\_Ops\\_RhylFlats@rwe.com](mailto:_Ops_RhylFlats@rwe.com)