

# NOTICE TO MARINERS

## Gwynt Y Mor Export Cable trenching

Please be advised of this notice advising mariners of the works for a trench for Gwynt Y Mor export cable project. The Capall Mara will carry out the trenching works and will be assisted by CTV Gladiator. The work will start first week of July. The works are scheduled to mid of August subject to weather.

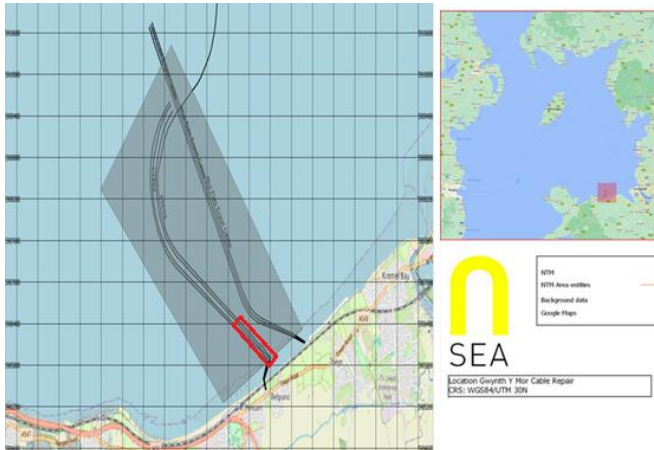


Figure 1 – Gwynt Y Mor Project Area

### Nature of Operations

The works of the trench at the Gwynt Y Mor export cable corridor will be carried out prior to some maintenance work on one of the Gwynt Y Mor export cables (subject to a separate Notice to Mariners), which will be carried out at a later date.

The Capall Mara vessel will conduct operations on a 24-hour basis and will trench on the export cable corridor route as shown in figure 1. We kindly ask that all vessels in the local vicinity observe a 500m stand-off at all times as the vessel may be limited manoeuvrable due to this trenching works and she will be positioned from time to time on spudlegs.


During the trenching, the vessel will display the prescribed lights and signals for trenching operations and will be monitoring VHF Channels 16 and 12.

Meanwhile the Capall Mara is in starting operations, a small diving campaign by Georgie Boy will be ongoing close by the beach. We kindly ask that all vessels in the local vicinity observe a 500m stand-off at all times as the vessel may be limited manoeuvrable due to diving operations and she will be positioned on anchors.


### Capall Mara (Dredging vessel)

VESSEL DETAILS		
VSAT	N/A	
Mobile	+44 7711 498 085	
Email	capallmara@deromein.co.uk	
Call Sign	MBSF3	
MMSI	232010652	
IMO	9696307	

### CRC Gladiator (CTV vessel)

VESSEL DETAILS		
Mobile	0044 7932 042977	
Email	crcgladiator@commercialribcharter.co.uk	
Call Sign	2IUR3	
MMSI	235112943	

**Georgie Boy (Dive support vessel)**

VESSEL DETAILS		
Mobile	07771903121	
Email	Mark@Northernribhire.co.uk	
Call Sign	MNQ14	
MMSI	232047578	

**Distribution List**

[noticestomariners@ukho.gov.uk](mailto:noticestomariners@ukho.gov.uk); [navwarnings@btconnect.com](mailto:navwarnings@btconnect.com); [sdr@ukho.gov.uk](mailto:sdr@ukho.gov.uk); [desnbcpcob-dghm@mod.co.uk](mailto:desnbcpcob-dghm@mod.co.uk); [navigationsafety@mcga.gov.uk](mailto:navigationsafety@mcga.gov.uk); [navigation.directorate@thls.org](mailto:navigation.directorate@thls.org); [jim@awjmarine.co.uk](mailto:jim@awjmarine.co.uk)

**Project and FLO Contact Details**

N-Sea Offshore Wind B.V. (Principal Contractor):  
Roy Schrauwen  
Project Manager  
N-Sea Offshore Wind bv  
[r.schrauwen@n-sea.com](mailto:r.schrauwen@n-sea.com)

**FLO:**

Jim Andrews  
[jim@awjmarine.co.uk](mailto:jim@awjmarine.co.uk)

**Co-ordinates of Work Area**

The below list of coordinates details the dredging area where the Capall Mara will be working (Figure 1)

Waypoint	Latitude (DD MM.mm)	Latitude (DD MM.mm)
1	53° 18.07841' N	003° 34.15493' W
2	53° 18.33809' N	003° 34.93446' W