

Notice to Mariners

The "SEAFOX 7" jack-up barge, "ELISA" and "FAIRPLAY 32" support vessels will be conducting geotechnical investigations for Awel y Môr Offshore Wind Farm Ltd west of the existing Gwynt y Môr Offshore Wind Farm. It is located approximately 10.5km off the Welsh coast in the Irish Sea, with a maximum total area of 78km².


The geotechnical investigation will include approximately 60 boreholes which will be drilled at discrete locations within the project work site. The vessel will be operating 24 hours a day during the survey works. The "SEAFOX 7" will be positioned throughout the site, remaining at each investigation point for several days. This may extend in the event of inclement weather.

The "ELISA" and "FAIRPLAY 32" will be assisting the "SEAFOX 7" in its daily operations and towing between investigation points. The tugs will standby at anchor on the project site and will be conducting transits between the site and nearby ports. Vessels will all display relevant lights and shapes as required under COLREGS.

Project works commenced on **16th November 2023 and continue through to end of May 2024**. This estimate includes delays associated with bad weather.

This document also includes the programmed location of "SEAFOX 7", dependent on weather for the period 04th April to 18th April 2024 **on the chart located at the end of this document**.

"SEAFOX 7" Jack-Up Barge	IMO: 8769717
	MMSI: 235065812
	Call Sign: 2BGC6
	Flag: Isle of Man
	Length Overall x Breadth: 55.5 x 32.2 m
	Operator: Seafox
	Vessel Phone: +31 (0)23 792 04 23
	Vessel Email: oim.sf7@seafox.com
	Onshore contact: +31 (0)23 554 13 00

"ELISA" Support Vessel / Tug	IMO: 9688879
	MMSI: 236745000
	Call Sign: PBZP
	Flag: Gibraltar
	Length Overall x Breadth: 32.27 x 9.10 m
	Operator: Landfall Marine BV
	Vessel Phone: +44 (0)7377241291 +31 108081569
	Vessel Email: elisa@ports.je Onshore contact: +31 (0)180 76 90 33

"FAIRPLAY 32" Support Vessel / Tug	IMO: 9360582
	MMSI: 210447000
	Call Sign: 5BAM6
	Flag: Cyprus
	Length Overall x Breadth: 34.5 x 11.6 m
	Operator: Fairplay Towage Group
	Vessel Phone: +49 17954 81152 / +49 40874 05392
	Vessel Email: Fairplay-32@fairplay-towage.com 24hrs Onshore contact: +49 40307 068221

"SEAFOX 7", "ELISA", and "FAIRPLAY 32" are supplied with VHF multi-channel radios and mobile phones.

All vessels operating within the planned area of survey are requested to keep their distance, a 500m safe distance zone around the vessels is requested wherever possible.

All mariners are reminded of their responsibilities under the International Regulations for Prevention of Collisions at Sea (COLREGS).

Survey Area for the Awel y Mor site

AWEL Y MOR SURVEY AREA		
LOCATION	LAT	LON
NE	53°29'27.60"N	3°35'13.20"W
SE	53°25'19.20"N	3°44'45.60"W
SW	53°26'42.00"N	3°51'36.00"W
NW	53°29'16.80"N	3°51'36.00"W

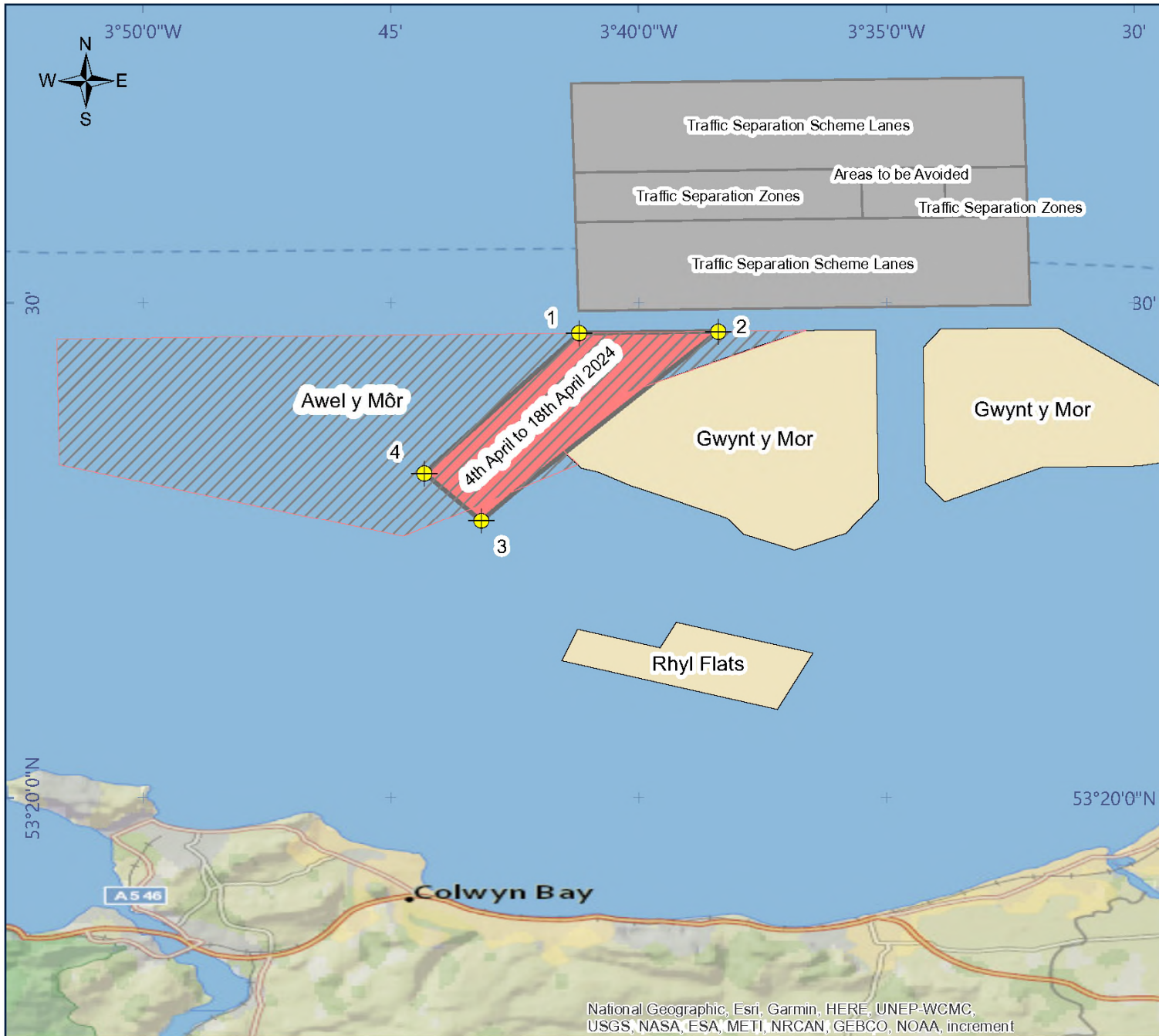
Estimated Survey Area for the period 04th April to 18th April 2024

SURVEY AREA 04th April to 18th April 2024		
LOCATION	LAT	LON
1	53°29'23.7"N	3°41'11.6"W
2	53°29'25.6"N	3°38'23.5"W
3	53°25'36.9"N	3°43'10.5"W
4	53°26'34.7"N	3°44'19.0"W

Contact details

A continuous listening watch will be conducted on VHF Channel 16 by the survey vessel. Operations will be conducted on a 24-hour basis and the Seafox 7 will have a Fisheries Liaison Representative who will engage in all communications with fishers as much as possible.

<p>General stakeholder enquiries:</p> <p>Awel y Môr Offshore Wind Farm Ltd RWE Renewables UK Ltd Windmill Hill Business Park Whitehill Way, Swindon, SN5 6PB</p> <p>Email: awelymor@rwe.com Website: https://awelymor.cymru/</p>	<p>Local fishing liaison officer</p> <p>Primary FLO Jim Andrews; (AWJ Marine) Phone: +44(0)7908 225 865 jim@awjmarine.co.uk</p> <p>Secondary FLO Rhys Kibble; (Brown & May Marine Ltd.) Phone: +44(0)7775 613 586 rhys.kibble@brownmay.com</p>
<p>Seafox 7 Fisheries Liaison Representative:</p> <p>+44 (0)7769 743 082</p>	



LEGEND

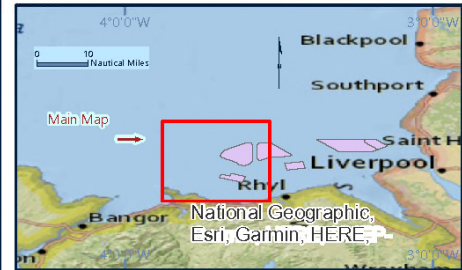
WORKS AREA 4th April to 18th April 2024

- Study Area - 4th April to 18th April 2024
- Awel y Môr Offshore Wind Farm
- Operational Wind Farms
- UK Hydrographic Office Maritime Limits
- Location Marker

ID	LAT	LOX
1	53°29'23.7\"N	3°41'11.6\"W
2	53°29'25.6\"N	3°38'23.5\"W
3	53°25'36.9\"N	3°43'10.5\"W
4	53°26'34.7\"N	3°44'19.0\"W

GEODEIC PARAMETERS

GEODEIC DATUM	WORLD GEODEIC SYSTEM 1984
VERTICAL DATUM	SEA SURFACE
PROJECTION	WKID: 4526 Authority: EPSG



FUGRO GEOSERVICES LTD.

Bickland Industrial Park, Falmouth, Cornwall, TR11 4TA, UK
 T +44 (0)1326 254 500
 WWW.FUGRO.COM

NOTICE TO MARINERS

Awel y Môr

Fferm Wynt Alltraeth

AWEL Y MÔR

Offshore Wind Farm

Date: 27 MARCH 2024