

## Notice to Mariners

The "SEAFOX 7" jack-up barge, "ELISA" and "FAIRPLAY 32" support vessels will be conducting geotechnical investigations for Awel y Môr Offshore Wind Farm Ltd west of the existing Gwynt y Môr Offshore Wind Farm. It is located approximately 10.5km off the Welsh coast in the Irish Sea, with a maximum total area of 78km<sup>2</sup>.


The geotechnical investigation will include approximately 60 boreholes which will be drilled at discrete locations within the project work site. The vessel will be operating 24 hours a day during the survey works. The "SEAFOX 7" will be positioned throughout the site, remaining at each investigation point for several days. This may extend in the event of inclement weather.

The "ELISA" and "FAIRPLAY 32" will be assisting the "SEAFOX 7" in its daily operations and towing between investigation points. The tugs will standby at anchor on the project site and will be conducting transits between the site and nearby ports. Vessels will all display relevant lights and shapes as required under COLREGS.

Project works commenced on **16<sup>th</sup> November 2023 and continue through to mid-May 2024**. This estimate includes delays associated with bad weather.

This document also includes the programmed location of "SEAFOX 7", dependent on weather for the **period 28<sup>th</sup> February to 13<sup>th</sup> March**.

"SEAFOX 7" Jack-Up Barge	IMO: 8769717
	MMSI: 235065812
	Call Sign: 2BGC6
	Flag: Isle of Man
	Length Overall x Breadth: 55.5 x 32.2 m
	Operator: Seafox
	Vessel Phone: +31 (0)23 792 04 23
	Vessel Email: <a href="mailto:oim.sf7@seafox.com">oim.sf7@seafox.com</a>
Onshore contact: +31 (0)23 554 13 00	

<p><b>"ELISA" Support Vessel / Tug</b></p>	<p>IMO: 9688879</p>
	<p>MMSI: 236745000</p>
	<p>Call Sign: PBZP</p>
	<p>Flag: Gibraltar</p>
	<p>Length Overall x Breadth: 32.27 x 9.10 m</p>
	<p>Operator: Landfall Marine BV</p>
	<p>Vessel Phone: +44 (0)7377241291 +31 108081569</p>
	<p>Vessel Email: <a href="mailto:elisa@ports.je">elisa@ports.je</a> Onshore contact: +31 (0)180 76 90 33</p>

<p><b>"FAIRPLAY 32" Support Vessel / Tug</b></p>	<p>IMO: 9360582</p>
	<p>MMSI: 210447000</p>
	<p>Call Sign: 5BAM6</p>
	<p>Flag: Cyprus</p>
	<p>Length Overall x Breadth: 34.5 x 11.6 m</p>
	<p>Operator: Fairplay Towage Group</p>
	<p>Vessel Phone: +49 17954 81152 / +49 40874 05392</p>
	<p>Vessel Email: <a href="mailto:Fairplay-32@fairplay-towage.com">Fairplay-32@fairplay-towage.com</a> 24hrs Onshore contact: +49 40307 068221</p>

"SEAFOX 7", "ELISA", and "FAIRPLAY 32" are supplied with VHF multi-channel radios and mobile phones.

All vessels operating within the planned area of survey are requested to keep their distance, a 500m safe distance zone around the vessels is requested wherever possible.

All mariners are reminded of their responsibilities under the International Regulations for Prevention of Collisions at Sea (COLREGS).

## Survey Area for the Awel y Mor site

AWEL Y MOR SURVEY AREA		
LOCATION	LAT	LON
NE	53°29'27.60"N	3°35'13.20"W
SE	53°25'19.20"N	3°44'45.60"W
SW	53°26'42.00"N	3°51'36.00"W
NW	53°29'16.80"N	3°51'36.00"W

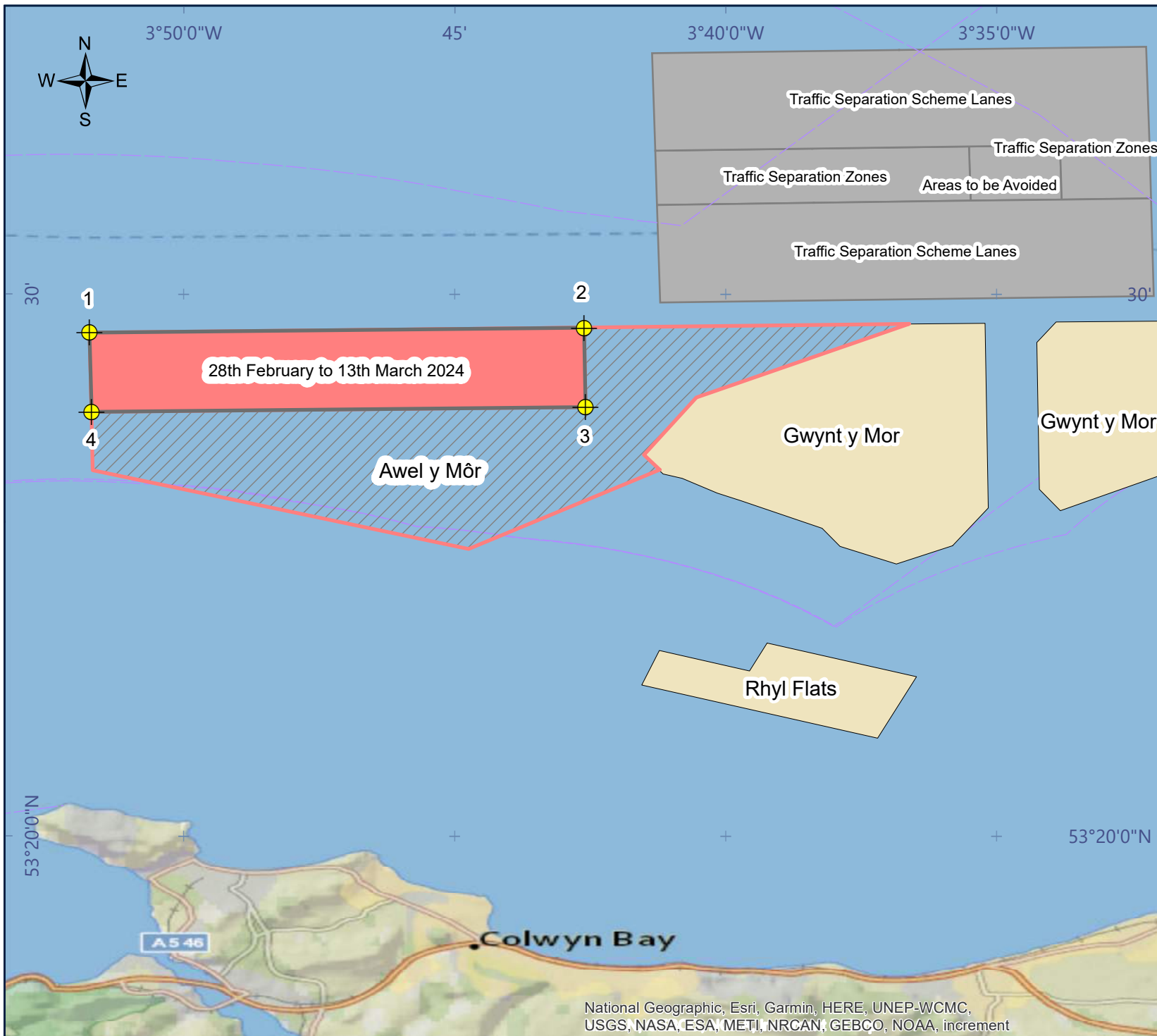
## Estimated Survey Area for the period 28<sup>th</sup> February to 13<sup>th</sup> March

SURVEY AREA 19 <sup>th</sup> Feb – 4 <sup>th</sup> March		
LOCATION	LAT	LON
1	53°29'22.52"N	3°42'36.90"W
2	53°27'54.54"N	3°42'35.22"W
3	53°27'49.36"N	3°51'42.28"W
4	53°29'17.05"N	3°51'44.56"W

## Contact details

A continuous listening watch will be conducted on VHF Channel 16 by the survey vessel. Operations will be conducted on a 24-hour basis and the Seafox 7 will have a Fisheries Liaison Representative who will engage in all communications with fishers as much as possible.

<p><b>General stakeholder enquiries:</b></p> <p>Awel y Môr Offshore Wind Farm Ltd                      RWE Renewables UK Ltd                      Windmill Hill Business Park                      Whitehill Way,                      Swindon,                      SN5 6PB</p> <p>Email: <a href="mailto:awelymor@rwe.com">awelymor@rwe.com</a>                      Website: <a href="https://awelymor.cymru/">https://awelymor.cymru/</a></p>	<p><b>Local fishing liaison officer</b></p> <p><b>Primary FLO</b>                      Jim Andrews; (AWJ Marine)                      Phone: +44(0)7908 225 865  <a href="mailto:jim@awjmarine.co.uk">jim@awjmarine.co.uk</a></p> <p><b>Secondary FLO</b>                      Rhys Kibble; (Brown &amp; May Marine Ltd.)                      Phone: +44(0)7775 613 586  <a href="mailto:rhys.kibble@brownmay.com">rhys.kibble@brownmay.com</a></p>
<p><b>Seafox 7 Fisheries Liaison Representative:</b></p> <p>+44 (0)7769 743 082</p>	



**LEGEND**

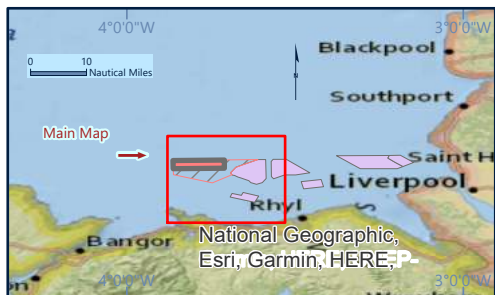
**WORKS AREA 28th February - 13th March 2024**

- Study Area - 28th February to 13th March 2024
- Awel y Môr Offshore Wind Farm
- Operational Wind Farms
- UK Hydrographic Office Maritime Limits
- Location Marker

Location	LAT	LON
1	53°29'22.5"N	3°42'36.9"W
2	53°27'54.5"N	3°42'35.2"W
3	53°27'49.4"N	3°51'42.3"W
4	53°29'17.0"N	3°51'44.6"W

**GEODETTIC PARAMETERS**

GEODETTIC DATUM	WORLD GEODETTIC SYSTEM 1984
VERTICAL DATUM	SEA SURFACE
PROJECTION	WKID: 4326 Authority: EPSG



**FUGRO GEOSERVICES LTD.**

Bickland Industrial Park, Falmouth, Cornwall, TR11 4TA, UK  
 T +44 (0)1326 254 500  
 WWW.FUGRO.COM

**NOTICE TO MARINERS**

Awel y Môr

Fferm Wynt Alltraeth

**AWEL Y MÔR**

Offshore Wind Farm