

RWE Rhyl Flats
Port of Mostyn
Coast Road
Mostyn
Flintshire CH8 9HE
Tel: 08450714475

thomas.rooney@rwe.com - Operations Engineer
bill.smith@rwe.com - Operations Manager
michael.bradley@rwe.com - General Manager

Issue: NtoM 08-2022

Date: 15/07/2022

NOTICE TO MARINERS

- **Introduction**

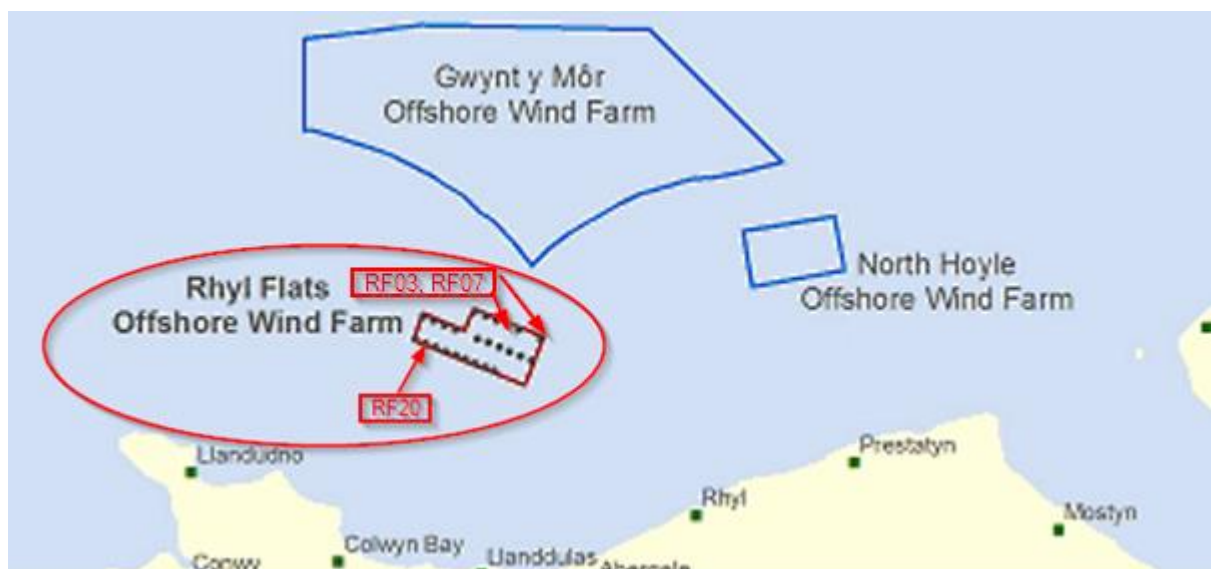
Please be advised that RWE Renewables UK will be carrying out maintenance operations including heavy lifting at Rhyl Flats Wind Farm situated off the North Wales Coast

- **Date & Location**

Operations will take place at RF03, RF07 and RF20 and will commence on or around 18th July 2022 and will take approximately 12 days to complete subject to weather.

Rhyl Flats Offshore Windfarm

REF	LATITUDE	LONGITUDE
RF03	53°23.291' N	03°38.319' W
RF07	53°22.902' N	03°36.599' W
RF20	53°23.729' N	03°41.045' W



- Vessel Details

Wind Server is a Jack-Up platform (Wind Farm Installation Vessel) measuring 80 metres in length by 32 metres in width. It has a 4.5 metre draft, coloured Red and white. When jacked up the Wind will be marked and displaying lights and day symbols in accordance with an Offshore Structure



- Requirements

Mariners are requested to keep well clear and pass slowly, particularly when the craft is manoeuvring or during lifting operations.

Vessels are requested to:-

- (1) Give the Wind a wide berth of 500m during these operations
- (2) Gain permission from Wind prior to access / approach if required within the 500m zone

- **Vessel Contact details**

Vessel registration

Name	WIND SERVER
Homeport	AARHUS
Flag	Danish
Registry	Danish International
Vessel	windserver@ziton.eu
Master	master.windserver@ziton.eu
Chief Engineer	ce.windserver@ziton.eu
Email (Inmarsat C)	421961511@inmc.eik.com
Mobile (Master)	+45 30 53 62 33
Mobile (Chief Engineer)	+45 23 63 95 82
Mobile (Fixed installation)	+45 24 90 01 59
Fleet Broadband Sat phone	+870 7739 91 499
VSAT phone	+45 82 13 16 76
IMO ID No.	9670793
C/S:	OWLB2
MMSI	219615000
Official No.	D4620

Further details are available from RWE Renewables Ltd at:-
Port of Mostyn, Holywell, Flintshire, CH8 9HE **Tel: 0845 071 4479**

Distribution List:

Radio Navigation Warnings	- Offshore.energy@ukho.gov.uk /
	- navwarnings@btconnect.com
The UKHO	- sdr@ukho.gov.uk
Trinity House	- navigation.directorate@thls.org
Kingfisher	- kingfisher@seafish.co.uk
Operations Engineer, Rhyl Flats	- thomas.rooney@rwe.com
Operations Manager, Rhyl Flats	- bill.smith@rwe.com
General Manager, Rhyl Flats	- michael.bradley@rwe.com

+ local mariners as per email distribution