

RWE Renewables UK
Port of Mostyn
Coast Road
Mostyn
Flintshire CH8 9HE
Tel: 08450714475

Operations North Hoyle - Daniel.James@RWE.com
Operations Manager – John.Carey@RWE.com
General Manager – John.Davies@RWE.com

Issue: NtoM 05-2021

Date: 19/04/2021

NOTICE TO MARINERS

- **Introduction**

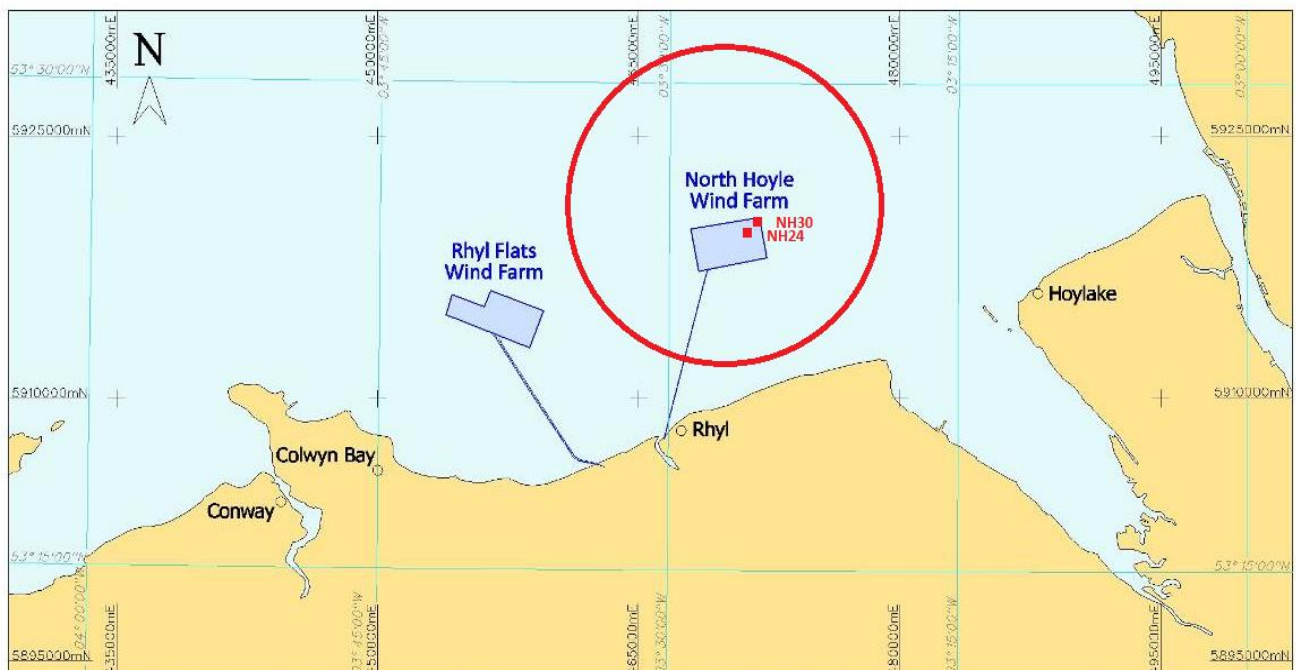
Please be advised that RWE Renewables UK will be carrying out maintenance operations including heavy lifting at North Hoyle Wind Farm situated off the North Wales Coast

- **Date & Location**

Operations will take place at NH30 and NH24 and will commence on or around 21st April 2021 and will take approximately 14 days to complete subject to weather

North Hoyle Offshore Windfarm

REF	LATITUDE	LONGITUDE
NH30	53 25.721'N	003 25.637'W
NH24	53 25.449'N	003 26.278'W



- Vessel Details

Wind is a Jack-Up platform (Wind Farm Installation Vessel) measuring 55 metres in length by 18 metres in width. It has a 4 metre draft, coloured Red and white. When jacked up the Wind will be marked and displaying lights and day symbols in accordance with an Offshore Structure.



- Requirements

Mariners are requested to keep well clear and pass slowly, particularly when the craft is manoeuvring or during lifting operations.

Vessels are requested to:-

- (1) Give the Wind a wide berth of 500m during these operations
- (2) Gain permission from Wind prior to access / approach if required within the 500m zone

- **Vessel Contact details**

Name: WIND
Operator: Ziton
Homeport: AARHUS
Flag: Danish
Registry: Danish International
Vessel email: wind@ziton.eu
Master email: master.wind@ziton.eu
Master name: NA
Mobile (Master): +45 20 48 55 86
Sat. phone: +45 89 87 72 53
VHF: Ch 16/14
IMO ID No. 9107851
Call Sign: OXSW2
MMSI: 220520000
Official No. D-4279

Further details are available from Innogy Renewables Ltd at:-
Port of Mostyn, Holywell, Flintshire, CH8 9HE **Tel: 0845 071 4479**

Distribution List:

Radio Navigation Warnings

- Offshore.energy@ukho.gov.uk /
- navwarnings@btconnect.com

The UKHO

- sdr@ukho.gov.uk

Trinity House

- navigation.directorate@thls.org

Kingfisher

- kingfisher@seafish.co.uk

Marine logistics & Offshore Operations

- Daniel.James@RWE.com

Operations Manager, North Hoyle

- John.Carey@RWE.com

General Manager, North Hoyle

- John.Davies@RWE.com

+ local mariners as per email distribution