

RWE Rhyll Flats  
Port of Mostyn  
Coast Road  
Mostyn  
Flintshire CH8 9HE  
Tel: 08450714475

[thomas.rooney@rwe.com](mailto:thomas.rooney@rwe.com) - Operations Engineer  
[bill.smith@rwe.com](mailto:bill.smith@rwe.com) - Operations Manager  
[michael.bradley@rwe.com](mailto:michael.bradley@rwe.com) - General Manager

Issue **04-2021**  
Date: **31-03-2021**

## NOTICE TO MARINERS

### Introduction:

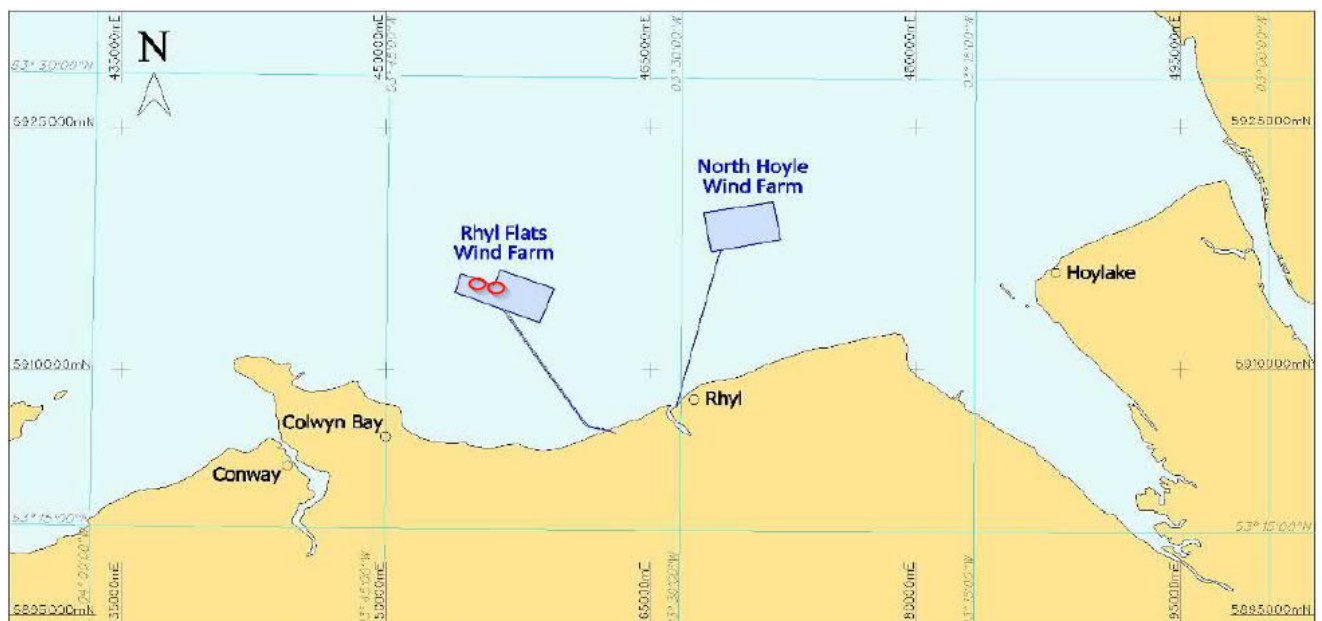
Please be advised that RWE will be carrying out urgent maintenance operations involving major component exchange including heavy lifting at Rhyll Flats Wind Farm situated off the North Wales Coast.

### Date & Location:

Operations will take place at RF11 & RF10 and will commence on or around **6<sup>th</sup> April 2021** and will take approximately 5 days to complete subject to weather.

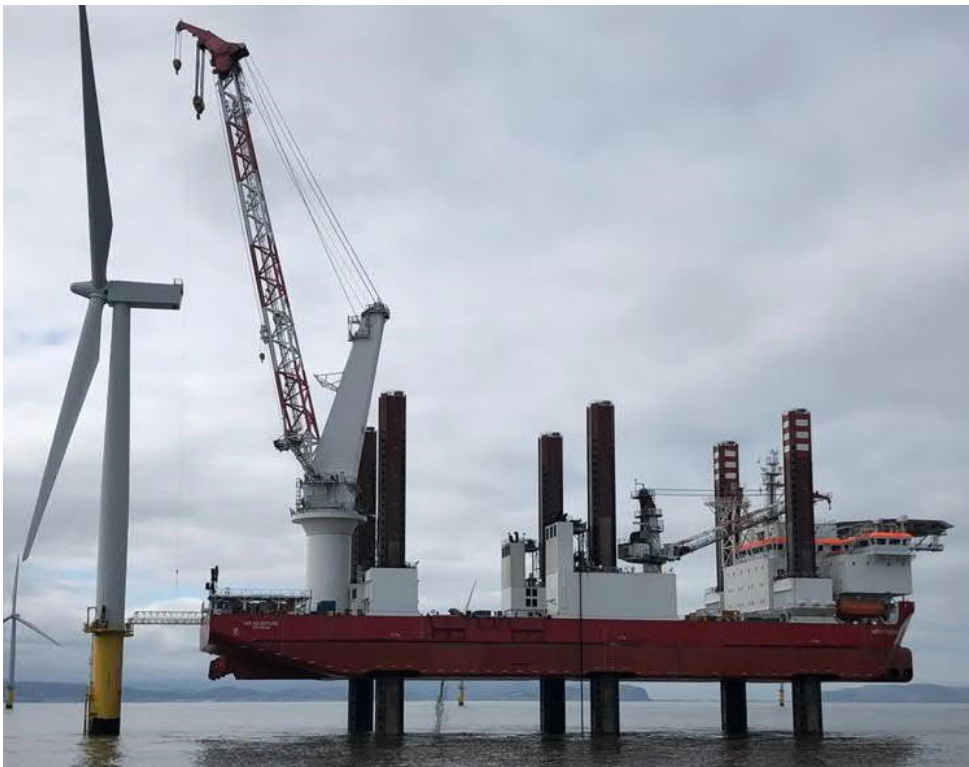
### Rhyll Flats Offshore Windfarm

	LATITUDE	LONGITUDE
RF11	53°23.057' N	03°39.891' W
RF10	53°23.153' N	03°40.315' W



### Vessel Details:

MPI Adventure is a 6 legged Jack-Up platform (Wind Farm Installation Vessel) measuring 138.55 metres in length by 40.80 metres in width. It has a 5.5 metre draft, coloured red and white. When jacked up the MPI Adventure will be marked and displaying lights and day symbols in accordance with an Offshore Structure.



### Requirements:

Mariners are requested to keep well clear and pass slowly, particularly when the craft is manoeuvring or during lifting operations.

Vessels are requested to:-

- (1) Give the MPI Adventure a wide berth of 500m during these operations
- (2) Gain permission from MPI Adventure prior to access / approach if required within the 500m zone

### Vessel Contact details:

MPI Adventure

[IMO Number](#): 9530084

callsign: PCKV

Vessel Master: TBC

E-mail: 0852.cpt@vanoord.com

Further details are available from RWE Renewables Ltd at:

RWE Rhyl Flats,  
Port of Mostyn,  
Holywell,  
Flintshire,  
CH8 9HE  
Tel: 0845 071 4475

### Distribution List:

Radio Navigation Warnings

- [Offshore.energy@ukho.gov.uk](mailto:Offshore.energy@ukho.gov.uk)

The UKHO

Trinity House

Kingfisher

Operations North Hoyle

Operations Rhyl Flats

+ local mariners as per email distribution

- [navwarnings@ukho.gov.uk](mailto:navwarnings@ukho.gov.uk)

- [sdr@ukho.gov.uk](mailto:sdr@ukho.gov.uk)

- [navigation.directorate@thls.org](mailto:navigation.directorate@thls.org)

- [kingfisher@seafish.co.uk](mailto:kingfisher@seafish.co.uk)

- [Daniel.James@rwe.com](mailto:Daniel.James@rwe.com)

- [Bill.Smith@rwe.com](mailto:Bill.Smith@rwe.com) & [thomas.rooney@rwe.com](mailto:thomas.rooney@rwe.com)