

RWE Rhyl Flats
Port of Mostyn
Coast Road
Mostyn
Flintshire CH8 9HE
Tel: 08450714475

thomas.rooney@rwe.com - Operations Engineer
bill.smith@rwe.com - Operations Manager
michael.bradley@rwe.com - General Manager

Issue 03-2021
Date: 18-03-2021

NOTICE TO MARINERS

Introduction:

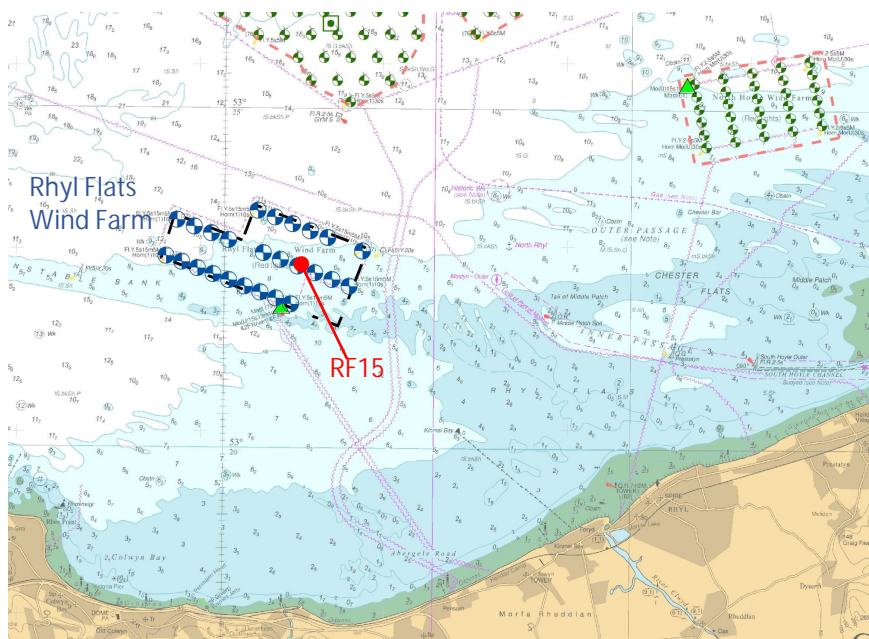
Please be advised that RWE will be carrying out urgent maintenance operations involving major component exchange including heavy lifting at Rhyl Flats Wind Farm situated off the North Wales Coast

Date & Location:

Operations will take place at RF15 and will commence on or around 18th March 2021 and will take approximately 1 day to complete subject to weather.

Rhyl Flats
Offshore Windfarm

REF	LATITUDE	LONGITUDE
RF15	53°22.676' N	03°38.196' W



Vessel Details:

MPI Adventure is a 6 legged Jack-Up platform (Wind Farm Installation Vessel) measuring 138.55 metres in length by 40.80 metres in width. It has a 5.5 metre draft, coloured blue and white. When jacked up the MPI Adventure will be marked and displaying lights and day symbols in accordance with an Offshore Structure.



Requirements:

Mariners are requested to keep well clear and pass slowly, particularly when the craft is manoeuvring or during lifting operations.

Vessels are requested to:-

- (1) Give the MPI Adventure a wide berth of 500m during these operations
- (2) Gain permission from MPI Adventure prior to access / approach if required within the 500m zone

Vessel Contact details:

MPI Adventure

[IMO Number](#): 9530084

callsign: PCKV

Vessel Master: TBC

E-mail: 0852.cpt@vanoord.com

Further details are available from RWE Renewables Ltd at:

RWE Rhyl Flats,
Port of Mostyn,
Holywell,
Flintshire,
CH8 9HE
Tel: 0845 071 4475

Distribution List:

Radio Navigation Warnings

- Offshore.energy@ukho.gov.uk

The UKHO

Trinity House

Kingfisher

Operations North Hoyle

Operations Rhyl Flats

+ local mariners as per email distribution

- navwarnings@ukho.gov.uk

- sdr@ukho.gov.uk

- navigation.directorate@thls.org

- kingfisher@seafish.co.uk

- Daniel.James@rwe.com

- Bill.Smith@rwe.com & thomas.rooney@rwe.com