

RWE Renewables UK Limited
Gwynt y Môr Offshore Wind Farm
Marine Co-ordinator Notice To Mariners

Issuer : Gwynt y Môr Marine Coordinator

Date of Issue:11-09-20

NTM no : NTM GYM-2020-08

For enquiries on this Notice to Mariners please contact:

Ian Gloyne-Phillips
Project and HSE
Director
07587 635 497
IGP@niras.com

Christopher Hulley
Project Manager and
Lead Surveyor
07875 841 834
CHHU@niras.com

GyM Marine Coordination:

gym.mcc@rwe.com

08450705500
or 07827 244495

RWE

- **Activity:**

Please be advised that NIRAS Consulting Ltd (NIRAS) will be undertaking a benthic drop down camera and Day grab survey for scientific monitoring purposes to the south, west and within the Gwynt y Môr Offshore Wind Farm Site during September 2020.

A map of the survey area and positional coordinates are provided below.

- **Location & Date:**

Survey operations are planned to take place during the period 14th to 30th September. There will be approximately five days at sea, weather dependent. Survey days may not necessarily be consecutive.

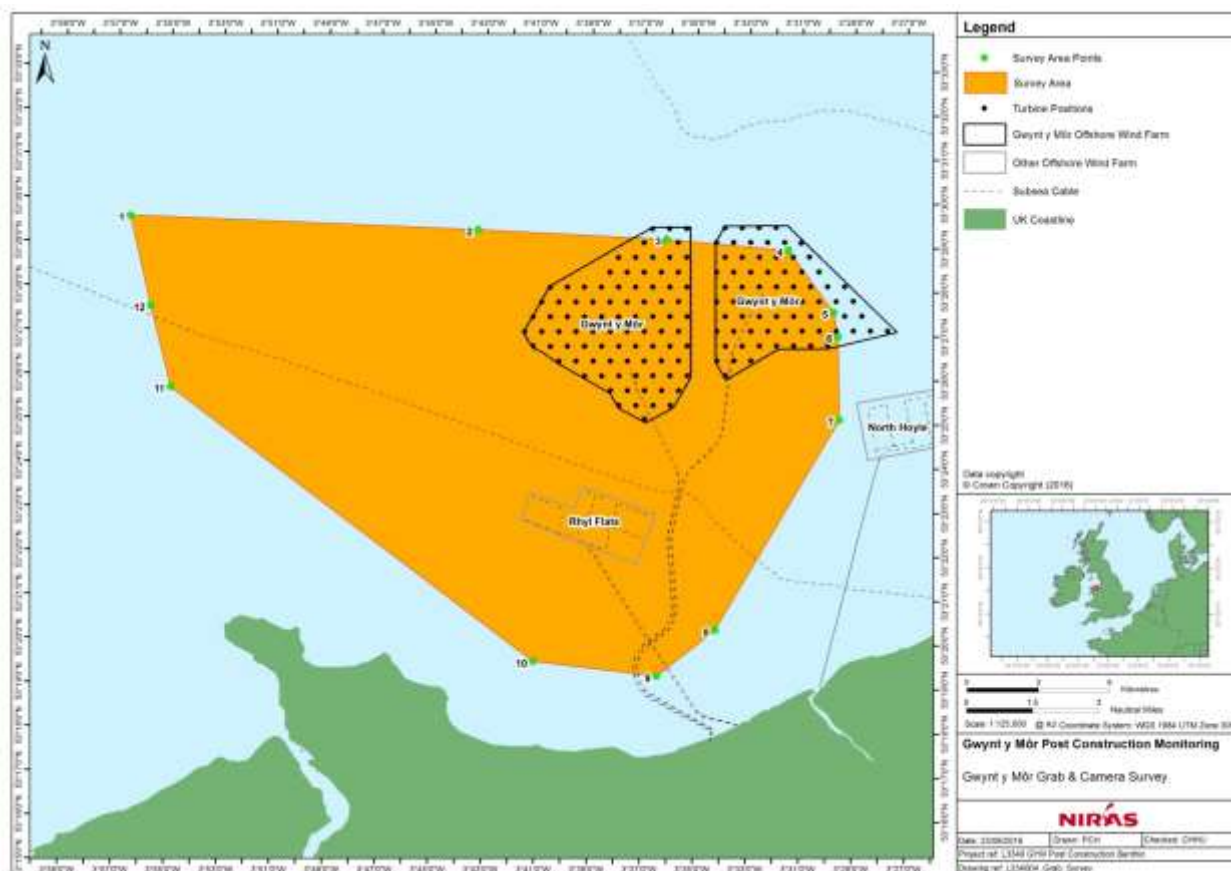
- **Vessel Details:**

Aquatech Surveyor is an 18 meter purpose built survey vessel with a white cabin and hull. The vessel will operate on a 24 hour basis from Holyhead, North Wales. Survey operations will be limited to daylight hours only with the vessel anchoring inshore overnight..



• **Positions defining outer limits of Survey Area:**

ID	Latitude (WGS84)	Longitude (WGS84)	X WGS84 UTM30N	Y WGS84 UTM30N
1	53.493162	-3.942115	437497.93	5927546.12
2	53.489225	-3.721766	452111.69	5926937.44
3	53.486165	-3.602254	460038.17	5926523.37
4	53.482368	-3.525094	465154.89	5926060.47
5	53.458985	-3.496193	467054.63	5923445.41
6	53.449894	-3.493439	467230.46	5922432.77
7	53.418338	-3.492157	467291.40	5918921.60
8	53.338633	-3.569925	462052.22	5910093.14
9	53.321169	-3.606526	459598.71	5908170.46
10	53.326373	-3.684548	454407.20	5908796.27
11	53.428582	-3.915349	439181.36	5920338.62
12	53.459204	-3.928578	438346.78	5923756.57



- **Requirements:**

Survey operations will involve drop down camera and grab sampling.

Mariners are requested to give the vessel a wide berth at all times as the vessel will be restricted in her ability to manoeuvre whilst survey equipment is deployed.

- (1) The vessel will remain on each survey station location for a period of approximately 15 minutes in order to obtain all required samples. Umbilical cable may potentially trail from the vessel by up to 25m during deployment, depending on tidal conditions. All survey equipment will be recovered by the survey vessel prior to departing the survey location.
- (2) Survey work will be predominantly in daylight hours.

- **Vessel Contact Details:**

Vessel Name: **Aquatech Surveyor**

Call Sign: **MERZ9**

MMSI: **232020541**

The vessel will monitor VHF **CH 16** at all times.

- **Distribution:**

As per GyM Notices To Mariners Distribution List. Please feel free to share the information.