

# NOTICE TO MARINERS

Issue Date: 11<sup>th</sup> May, 2017

## Western Link Project

### Post lay mattresses operation in the Irish Sea

Mariners are advised that post lay mattresses works are planned for the Western Link HVDC cable following the burial works. These mattresses are requirement as a means of protection over the existing crossing with cables and pipelines at four locations along the Western Link Project route (see Figure 2 and Table 1) where the Western Link HVDC cable is currently exposed and monitored by Guard Vessels. The installation of the mattresses is expected to start around the 20<sup>th</sup> of May 2017 working from the northern sections progressing south along the Western Link HVDC route with completion expected in June 2017.

The mattress installation works will be carried out by **Assodivers Ltd** using **MPSV Argo I** (IMO 7432109; Call Sign SVAH9) multi-purpose vessel.

**Vessels are requested to pass at a safe speed and distance and fishing vessels are advised to remain a safe distance (approximately 1.5 nautical miles) from the areas identified in Table 1. Guard Vessels have been deployed at each location to aid in monitoring the exposed areas and will advise of safe distances locally.**

The vessel will monitor VHF Channel 16 at all times.



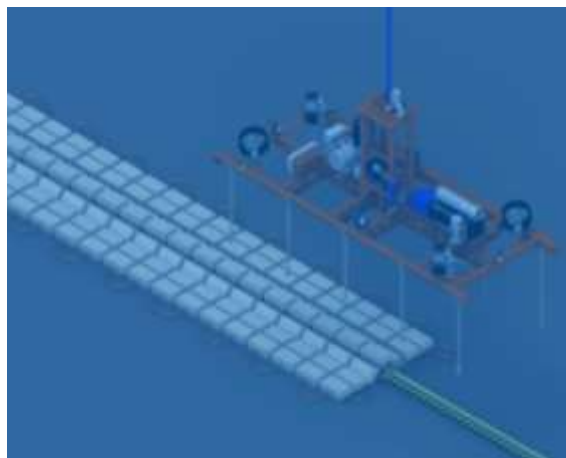
*MPSV Argo I*

### **Pre-installation survey**

A survey will be performed at each location prior to the undertaking of any mattress installation activities to confirm the positions of the Western Link HVDC cable and the crossing location.

### **Mattresses Installation**

Following positive location of the crossing, the MPSV Argo I will deploy the mattresses of an over-trawlable design installed as a single layer, using a frame. This process will be repeated to construct the crossing specification before moving to the next crossing location.



**Figure 1** – Mattress installation arrangement

### **Post-installation survey**

Following the installation of the mattresses a post-installation survey will be carried out to confirm the mattresses have been positioned as set out in the design.

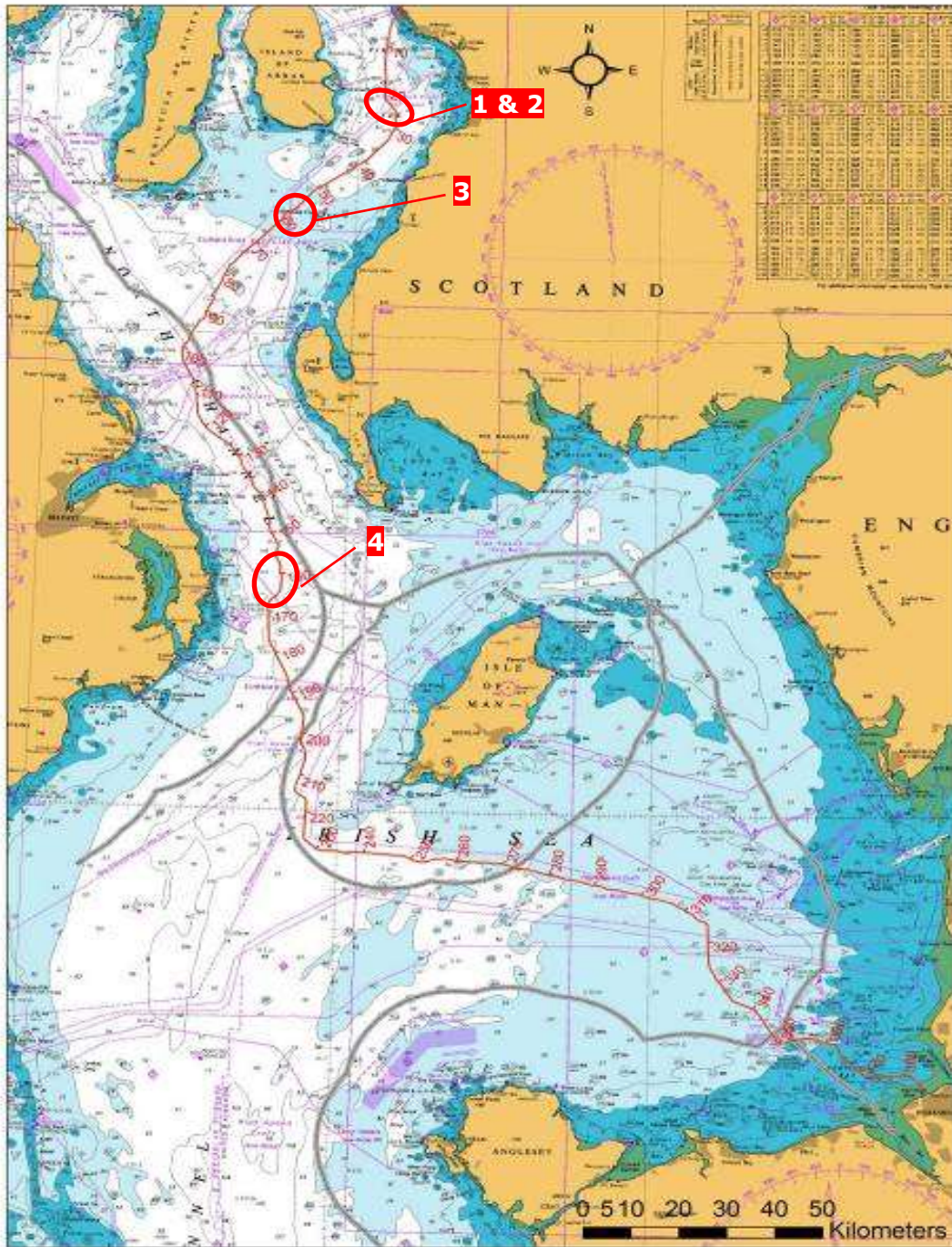


Figure 2 –Western Link HVDC cable route and post-installed mattress locations

**Table 1 – Post-installed mattress locations**

#	ID (Position Name / Event)	WGS84 - UTM 30 N		WGS84		Water Depth referred to LAT (m)	Geodetic			
		Easting	Northing	Latitude	Longitude		Partial Distance (km)	KP (km) from Ardneil	RKP (km) from Wirral	Bearing (deg)
1	Sirius_North_(2)_Cable_IS	379124	6152034	55° 29.966'N	004° 54.815'W	75	0,180	22,630	364,530	139,0
	Sirius_North_(1)_Cable_IS	379129	6152028	55° 29.963'N	004° 54.810'W	75	0,007	22,638	364,523	139,0
2	Lanis_3_Cable_IS	380434	6150276	55° 29.038'N	004° 53.526'W	81	1,961	24,823	362,337	142,0
3	LANIS_3_(2)_Cable_IS	359042	6126091	55° 15.667'N	005° 13.090'W	47	0,760	59,647	327,513	255,2
4	LANIS_2_Cable_IS	355775	6035512	54° 26.808'N	005° 13.459'W	121	0,272	165,980	221,180	232,7

## Contact Details:

Further enquiries should be addressed to the following contacts:

AWJ Marine	Jim Andrews <i>(who will also coordinate the Fisheries liaison for this operation)</i> <a href="mailto:jim@awjmarine.co.uk">jim@awjmarine.co.uk</a> Office: +44 (0) 845-880-2540, Mobile: +44 (0) 7908-225865,
Prysmian Project Manager	Alberto Pirovano <a href="mailto:alberto.pirovano@prysmiangroup.com">alberto.pirovano@prysmiangroup.com</a> Office: +39 02 6449 33590 Mobile: +39 335 5962819
MPSV Argo Master	<a href="mailto:argo@assodivers.gr">argo@assodivers.gr</a> Fleet: +870 7649 45428-9 Mobile: +30 6944 621907