

# NOTICE TO MARINERS

Issue Date: 1<sup>st</sup> February, 2017

## Western Link Project

### Deep water cable Post Lay Installation Burial Works Firth of Clyde

The Western Link Cable is being laid on the seabed between Hunterston in the Firth of Clyde and the Wirral. This notice provides an update on work that is due to be carried out to protect exposed areas of cable on the section of the route in the Firth of Clyde. The locations of these works are shown in **Table 1** of this report.

The **Campaign 4** Western Link HVDC cable has been surface laid on the seabed by using the Cable Laying vessel Giulio Verne. The cable will be post protected by Post Lay Installation Burial (PLIB) works using jetting tools. The campaign C4 cable (Firth of Clyde – Figure 4) consists of: Pole 1 from Ardneil shore end at KP 0 to KP 58 together with the first section of Pole 2 from Ardneil shore end at KP 0 up to KP 5.

Pole 1 and 2 have been laid in close proximity up to KP 3.8.

Mariners are advised that the Post Lay Installation Burial (PLIB) work will be carried out starting early February weather permitting by **Prysmian** using **Normand Pacific** (IMO 9491977; Call Sign LAXI7) in deeper water and using **Jif Challenger** (IMO 9732735; Call Sign FIYA) for the inshore section of the route (upto KP 3.8).

**Vessels are requested to pass at a safe speed and distance and fishing vessels are advised to remain a safe distance (approximately 1.5 nautical miles) from the areas identified. Guard Vessels have been deployed at each location to aid in monitoring the exposed areas and will advise of safe distances locally.**

**The vessels will monitor VHF Channel 16 at all times.**



**Figure 1 PLIB Support vessel - Normand Pacific**

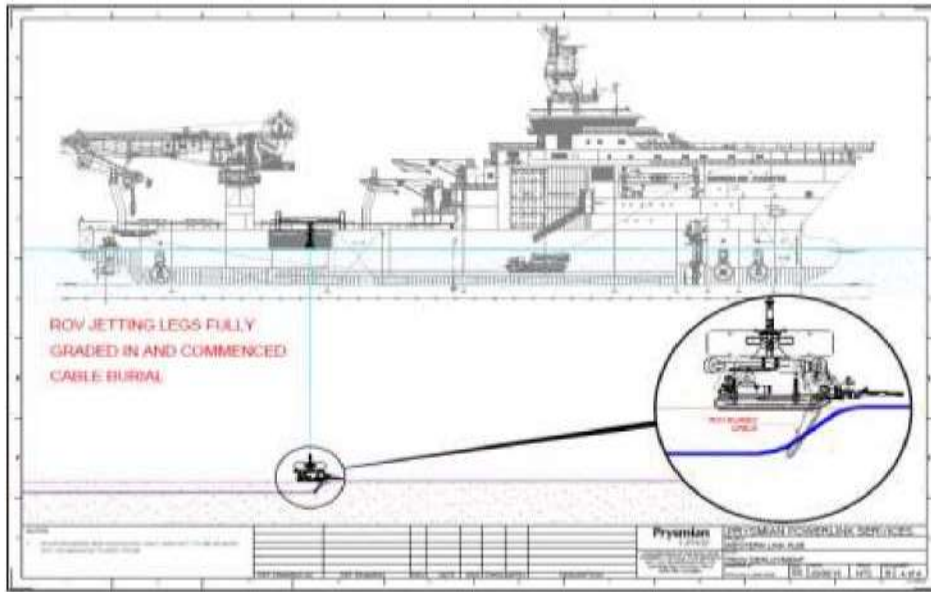


**Figure 2 PLIB Support vessel - Jif Challenger**

### **Post Lay Installation Burial (PLIB)**

The post protection methods for this section of the route is post lay burial using a jetting tool. The PLIB operations with the use of a subsea burial tool as indicated in Figure 3, will have restricted maneuverability as it completes its work scope.

Guard vessels which have previously been stationed to monitor the cable and provide advice to mariners following the cable laying will remain in position until the all of the post protection has been completed. In areas of service crossings the guard vessels will remain on location until the completion of matting or rock placement works.



**Figure 3 – PLIB general arrangement**

**PLIB Works Overview**

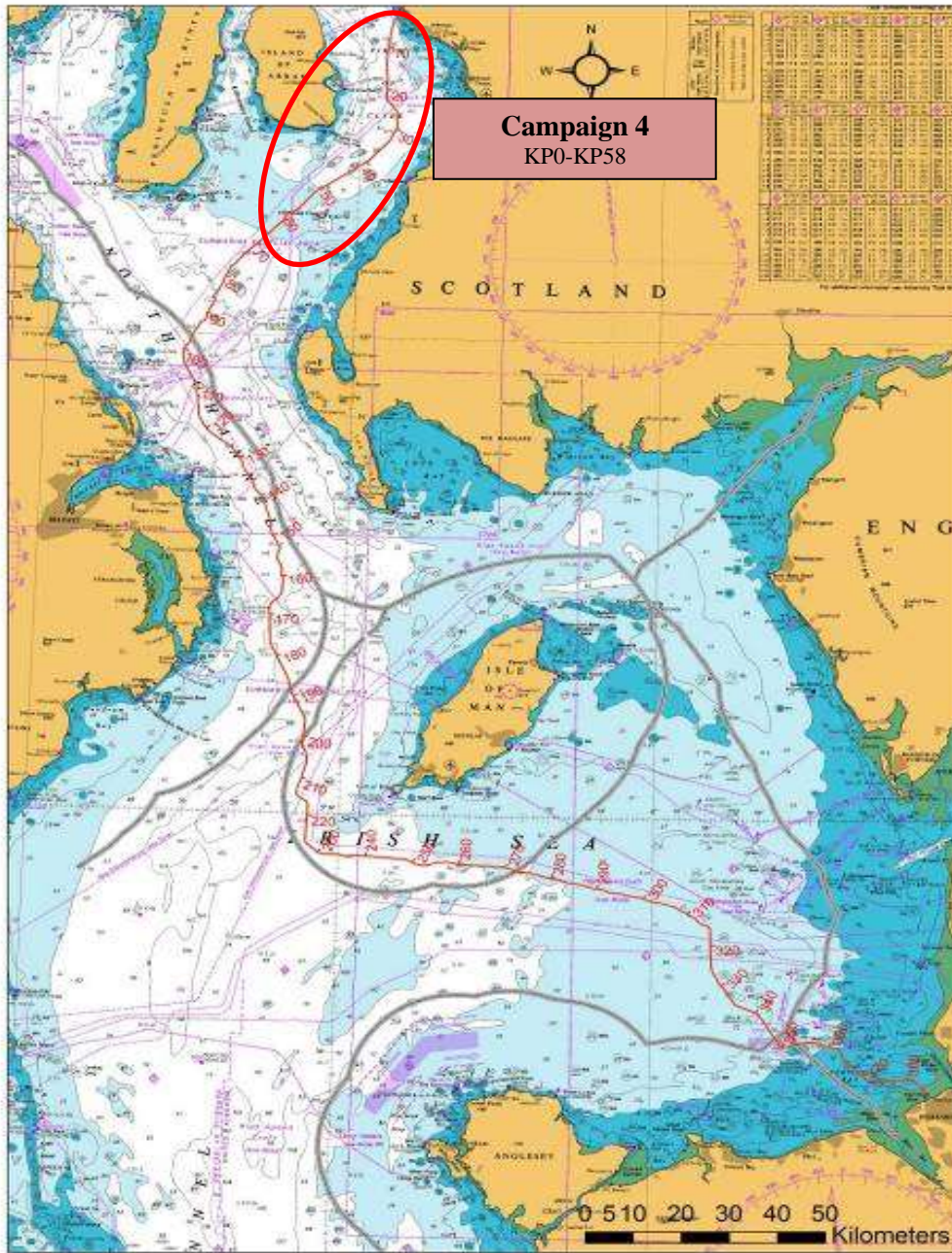
The locations of the exposed sections of Campaign 4 that will be protected by PLIB are shown in Table 1 of this Notice.

**Table 1 – Campaign 4 installation section route**

ID (Position Name / Event)	WGS84 - UTM 30 N		WGS84		Water Depth referred to LAT (m)	Geodetic				Turning Angle (deg)
	Easting	Northing	Latitude	Longitude		Partial Distance (km)	KP (km) from Ardneil	RKP (km) from Wirral	Bearing (deg)	
JB_ARDNEIL	381725	6173953	55° 41.815'N	004° 52.910'W	-	-	0.000	387.161	-	-
HDD_SEA_END	381465	6173437	55° 41.533'N	004° 53.145'W	1	0.579	0.579	386.582	205.2	7.5
AC_1	381280	6172908	55° 41.246'N	004° 53.307'W	10	0.560	1.139	386.022	197.7	15.0
10m	381277	6172867	55°41.224'N	004°53.309'W	10	0.041	1.179	385.981	182.7	0.0
AC_2	381216	6172048	55° 40.781'N	004° 53.346'W	16	0.821	2.001	385.160	182.7	2.1
AC_3	381192	6171389	55° 40.426'N	004° 53.352'W	20	0.660	2.661	384.499	180.6	30.0
AC_4	381015	6171108	55° 40.272'N	004° 53.513'W	22	0.332	2.993	384.168	210.6	19.1
AC_5	380853	6170978	55° 40.199'N	004° 53.664'W	25	0.208	3.201	383.960	229.6	12.3
AC_6	380611	6170857	55° 40.130'N	004° 53.892'W	46	0.271	3.472	383.689	242.0	30.3
AC_7	380408	6170547	55° 39.961'N	004° 54.077'W	53	0.370	3.842	383.319	211.7	19.7
AC_8	380174	6169573	55° 39.432'N	004° 54.275'W	60	1.002	4.844	382.316	192.0	0.9
AC_9	379460	6166398	55° 37.711'N	004° 54.872'W	79	3.255	8.099	379.062	191.1	10.0
AC_10	379389	6164909	55° 36.907'N	004° 54.900'W	79	1.492	9.591	377.570	181.1	2.8
AC_11	379339	6164389	55° 36.626'N	004° 54.934'W	81	0.522	10.113	377.048	183.9	3.8
AC_12	379172	6163361	55° 36.070'N	004° 55.066'W	87	1.042	11.155	376.006	187.7	2.5

AC_13	378876	6160871	55° 34.724'N	004° 55.282'W	92	2.508	13.662	373.498	185.2	8.0
AC_14	378904	6159599	55° 34.039'N	004° 55.222'W	91	1.273	14.935	372.226	177.2	4.1
AC_15	379012	6158456	55° 33.425'N	004° 55.090'W	84	1.148	16.083	371.077	173.0	5.8
AC_16	379009	6158019	55° 33.189'N	004° 55.081'W	82	0.437	16.520	370.640	178.8	2.4
AC_17	378997	6157779	55° 33.060'N	004° 55.086'W	82	0.240	16.761	370.400	181.2	13.3
AC_18	379089	6157284	55° 32.794'N	004° 54.986'W	75	0.504	17.265	369.896	167.9	11.8
AC_19	379078	6156780	55° 32.523'N	004° 54.983'W	76	0.504	17.769	369.392	179.7	0.8
AC_20	379069	6155475	55° 31.819'N	004° 54.958'W	76	1.305	19.074	368.086	178.8	5.8
AC_21	378771	6152732	55° 30.337'N	004° 55.168'W	75	2.759	21.833	365.327	184.6	20.2
AC_22	378850	6152417	55° 30.168'N	004° 55.085'W	76	0.325	22.159	365.002	164.4	19.2
AC_23	379010	6152173	55° 30.039'N	004° 54.927'W	75	0.292	22.451	364.710	145.2	6.2
Sirius_North_(2)_Cabl	379124	6152034	55° 29.966'N	004° 54.815'W	75	0.180	22.630	364.530	139.0	0.0
Sirius_North_(1)_Cabl	379129	6152028	55° 29.963'N	004° 54.810'W	75	0.007	22.638	364.523	139.0	0.0
AC_24	379272	6151855	55° 29.872'N	004° 54.670'W	76	0.225	22.862	364.298	139.0	3.1
Lanis_3_Cable_IS	380434	6150276	55° 29.038'N	004° 53.526'W	81	1.961	24.823	362.337	142.0	0.0
AC_25	380962	6149561	55° 28.660'N	004° 53.007'W	79	0.889	25.712	361.448	142.1	14.8
AC_26	381055	6149324	55° 28.534'N	004° 52.912'W	76	0.255	25.967	361.193	156.9	19.6
AC_27	381100	6148046	55° 27.846'N	004° 52.837'W	76	1.278	27.246	359.915	176.5	1.5
AC_28	381116	6145941	55° 26.712'N	004° 52.768'W	74	2.105	29.351	357.809	178.0	16.8
AC_29	380993	6145520	55° 26.483'N	004° 52.874'W	72	0.439	29.790	357.370	194.8	6.7
AC_30	380800	6145068	55° 26.237'N	004° 53.045'W	71	0.492	30.282	356.878	201.5	6.4
AC_31	380248	6144089	55° 25.702'N	004° 53.542'W	70	1.123	31.406	355.755	207.9	7.1

AC_32	379758	6142893	55° 25.050'N	004° 53.976'W	66	1.294	32.699	354.461	200.7	19.3
AC_33	379457	6142554	55° 24.863'N	004° 54.252'W	66	0.453	33.152	354.008	220.0	2.1
AC_34	378674	6141735	55° 24.410'N	004° 54.973'W	63	1.133	34.286	352.875	222.1	0.2
AC_35	378147	6141187	55° 24.107'N	004° 55.457'W	62	0.760	35.046	352.115	222.3	0.6
AC_36	375226	6138084	55° 22.390'N	004° 58.141'W	56	4.263	39.309	347.852	221.7	11.8
AC_37	374305	6137442	55° 22.030'N	004° 58.995'W	56	1.123	40.432	346.728	233.5	1.4
AC_38	363859	6130550	55° 18.150'N	005° 08.675'W	50	12.516	52.949	334.212	235.0	14.6
AC_39	360198	6126500	55° 15.907'N	005° 12.012'W	47	5.460	58.409	328.752	220.4	18.0
AC_40	359783	6126262	55° 15.772'N	005° 12.396'W	47	0.478	58.887	328.273	238.4	16.8



**Figure 3** – Western Link cable route - Deep Water installation route and C4 section

### Contact Details:

Further enquiries should be addressed to the following contacts:

AWJ Marine	Jim Andrews <i>(who will also coordinate the Fisheries liaison for this operation)</i> <a href="mailto:jim@awjmarine.co.uk">jim@awjmarine.co.uk</a> Office: +44 (0) 845-880-2540, Mobile: +44 (0) 7908-225865,
Prysmian Project Manager	Alberto Pirovano <a href="mailto:alberto.pirovano@prysmiangroup.com">alberto.pirovano@prysmiangroup.com</a> Office: +39 02 6449 33590 Mobile: +39 335 5962819
Master of Jif Challenger	<a href="mailto:jifchallenger@jifchallenger.jifmar.net">jifchallenger@jifchallenger.jifmar.net</a> Sat - Tel: +870 773923171 Bridge (V-Sat): +33 413 680 753



## Distribution List:

[abat@eircom.net](mailto:abat@eircom.net)  
[admin@welshsailing.org](mailto:admin@welshsailing.org)  
[Alan.Gibson@marinemanagement.org.uk](mailto:Alan.Gibson@marinemanagement.org.uk)  
[alana.murphy@rya.org.uk](mailto:alana.murphy@rya.org.uk)  
[alasdair.wilkie@hiberniaatlantic.com](mailto:alasdair.wilkie@hiberniaatlantic.com)  
[Alec.keep@mcga.gov.uk](mailto:Alec.keep@mcga.gov.uk)  
[andre.coccucio@mcga.gov.uk](mailto:andre.coccucio@mcga.gov.uk)  
[andrew.sheen@irishferries.com](mailto:andrew.sheen@irishferries.com)  
[annette.stube@maersk.com](mailto:annette.stube@maersk.com)  
[b.armstrong@sff.co.uk](mailto:b.armstrong@sff.co.uk)  
[barrowmc@abports.co.uk](mailto:barrowmc@abports.co.uk)  
[bdeas@nffo.org.uk](mailto:bdeas@nffo.org.uk)  
[blackpool@marinemanagement.org.uk](mailto:blackpool@marinemanagement.org.uk)  
[bryan.davies@heyshamport.com](mailto:bryan.davies@heyshamport.com)  
[businessdevelopmentdepartment3@wales.gsi.gov.uk](mailto:businessdevelopmentdepartment3@wales.gsi.gov.uk)  
[caroline.price@rya.org.uk](mailto:caroline.price@rya.org.uk) ,  
[CETI@Centrica.com](mailto:CETI@Centrica.com)  
[Charlie.Mawer@clydeport.co.uk](mailto:Charlie.Mawer@clydeport.co.uk)  
[chris.clark@gov.im](mailto:chris.clark@gov.im)  
[christopherkeogh@transport.ie](mailto:christopherkeogh@transport.ie)  
['claire.storey@naturalengland.org.uk'](mailto:'claire.storey@naturalengland.org.uk')  
[clive.lane@mcga.gov.uk](mailto:clive.lane@mcga.gov.uk)  
[clyde.coastguard@mcga.gov.uk](mailto:clyde.coastguard@mcga.gov.uk)  
[colin.brown@mcga.gov.uk](mailto:colin.brown@mcga.gov.uk)  
[colin.brown@mcga.gov.uk](mailto:colin.brown@mcga.gov.uk)  
[crousing@rya.co.uk](mailto:crousing@rya.co.uk)  
[d.obrien@cil.ie](mailto:d.obrien@cil.ie)  
[dale.rodmeil@nffo.org.uk](mailto:dale.rodmeil@nffo.org.uk)  
[MerseyMarineManagers@Peelports.com](mailto:MerseyMarineManagers@Peelports.com)  
[danny.everitt@mscuk.com](mailto:danny.everitt@mscuk.com)  
[dannyobrien@bge.ie](mailto:dannyobrien@bge.ie)  
[david.crowther@centrica.com](mailto:david.crowther@centrica.com)  
[DEandT@wales.gsi.gov.uk](mailto:DEandT@wales.gsi.gov.uk)  
[DeshWebCorrespondence@Wales.GSI.Gov.UK](mailto:DeshWebCorrespondence@Wales.GSI.Gov.UK)  
[dlw@seatruckgroup.co.uk](mailto:dlw@seatruckgroup.co.uk)  
[doe.iemonitoring@doeni.gov.uk](mailto:doe.iemonitoring@doeni.gov.uk)  
[doug.percy@transsectormarine.co.uk](mailto:doug.percy@transsectormarine.co.uk)  
[dtd@cumbriasfc.fsnet.co.uk](mailto:dtd@cumbriasfc.fsnet.co.uk)  
[econsentsadmin@scotland.gsi.gov.uk](mailto:econsentsadmin@scotland.gsi.gov.uk)  
[emmet.mcfadden@mutual-energy.com](mailto:emmet.mcfadden@mutual-energy.com)  
[emmet.mcfadden@mutual-energy.com](mailto:emmet.mcfadden@mutual-energy.com)  
[EnergyConsents@scotland.gsi.gov.uk](mailto:EnergyConsents@scotland.gsi.gov.uk)  
[enquiries@drdni.gov.uk](mailto:enquiries@drdni.gov.uk)  
[erecra@talktalk.net](mailto:erecra@talktalk.net)  
[jon.ford@cw.com](mailto:jon.ford@cw.com)  
[jon.ford@vodafone.com](mailto:jon.ford@vodafone.com)  
[jonwarren@merseywharf.co.uk](mailto:jonwarren@merseywharf.co.uk)  
[josefhanik@wirral.gov.uk](mailto:josefhanik@wirral.gov.uk)  
[Joyce.johnson@mcga.gov.uk](mailto:Joyce.johnson@mcga.gov.uk)  
[keith.3.brooks@bt.com](mailto:keith.3.brooks@bt.com)  
[keith.3.brooks@bt.com](mailto:keith.3.brooks@bt.com)  
[keith.tatman@mcga.gov.uk](mailto:keith.tatman@mcga.gov.uk)  
[kenneth.poole@cemex.com](mailto:kenneth.poole@cemex.com)  
[Kevin.Best@BHPBilliton.com](mailto:Kevin.Best@BHPBilliton.com)  
[kingfisher@seafish.co.uk](mailto:kingfisher@seafish.co.uk)  
[liverpool\\_mo@mcga.gov.uk](mailto:liverpool_mo@mcga.gov.uk)  
[lykup@dongenergy.co.uk](mailto:lykup@dongenergy.co.uk)  
[mail@liverpoolmarina.com](mailto:mail@liverpoolmarina.com)  
[marine.operations.centre@gov.im](mailto:marine.operations.centre@gov.im)  
[marine.team@bt.com](mailto:marine.team@bt.com)  
[Mark.Wilber@external.eni.com](mailto:Mark.Wilber@external.eni.com)  
[mark.woodward@steampacket.com](mailto:mark.woodward@steampacket.com)  
[markthomas@wirral.gov.uk](mailto:markthomas@wirral.gov.uk)  
[maurice.smith@esbi.com](mailto:maurice.smith@esbi.com)  
[mdurcan@bge.ie](mailto:mdurcan@bge.ie)  
[Michael.Brew@gov.im](mailto:Michael.Brew@gov.im)  
[michael.moore9@btinternet.com](mailto:michael.moore9@btinternet.com)  
[mick.mcguckin@mutual-energy.com](mailto:mick.mcguckin@mutual-energy.com)  
[MS.marinelicensing@scotland.gsi.gov.uk](mailto:MS.marinelicensing@scotland.gsi.gov.uk)  
[n.lauder@sff.co.uk](mailto:n.lauder@sff.co.uk)  
[natkinson@abports.co.uk](mailto:natkinson@abports.co.uk)  
[navigation.directorate@thls.org](mailto:navigation.directorate@thls.org)  
[navigation@nlb.org.uk](mailto:navigation@nlb.org.uk)  
[neil.wellum@marinemanagement.org.uk](mailto:neil.wellum@marinemanagement.org.uk)  
[nkelly@doehle-iom.com](mailto:nkelly@doehle-iom.com)  
[norman.leece@mezeron.com](mailto:norman.leece@mezeron.com)  
[nridehalgh@abports.co.uk](mailto:nridehalgh@abports.co.uk)  
['nwplanning@naturalengland.org.uk'](mailto:'nwplanning@naturalengland.org.uk')  
[osbornted@aol.com](mailto:osbornted@aol.com)  
[paul.o'rouke@eirgrid.com](mailto:paul.o'rouke@eirgrid.com)  
[paul.townsend@mcga.gov.uk](mailto:paul.townsend@mcga.gov.uk)  
[peter.hodgetts@thecrownestate.co.uk](mailto:peter.hodgetts@thecrownestate.co.uk)  
[peter.jamieson@virginmedia.co.uk](mailto:peter.jamieson@virginmedia.co.uk)  
[peter.jordan@sse.com](mailto:peter.jordan@sse.com)  
[portcontrol@stenaline.com](mailto:portcontrol@stenaline.com)  
[robert.floyd@wales.gsi.gov.uk](mailto:robert.floyd@wales.gsi.gov.uk)  
[Robert.Whiteley@naturalengland.org.uk](mailto:Robert.Whiteley@naturalengland.org.uk)  
[Ron.Bailey@clydeport.co.uk](mailto:Ron.Bailey@clydeport.co.uk)

[fisheries@wales.gsi.gov.uk](mailto:fisheries@wales.gsi.gov.uk)  
[Fleet.Operations@POferries.com](mailto:Fleet.Operations@POferries.com)  
[freighthelp@poferries.com](mailto:freighthelp@poferries.com)  
[gedherby@wirral.gov.uk](mailto:gedherby@wirral.gov.uk)  
[graeme.proctor@mcga.gov.uk](mailto:graeme.proctor@mcga.gov.uk)  
[Gurpal.Ghotra@mutual-energy.com](mailto:Gurpal.Ghotra@mutual-energy.com)  
[hannah.birtles@naturalengland.org.uk](mailto:hannah.birtles@naturalengland.org.uk)  
[hcdfiles@ukho.gov.uk](mailto:hcdfiles@ukho.gov.uk)  
[hdcf@ukho.gov.uk](mailto:hdcf@ukho.gov.uk)  
[hdcfiles@ukho.gov.uk](mailto:hcdfiles@ukho.gov.uk)  
[helen.elphick@thecrownestate.co.uk](mailto:helen.elphick@thecrownestate.co.uk)  
[holyheadcoastguard@mcga.gov.uk](mailto:holyheadcoastguard@mcga.gov.uk)  
[hq@stratmarine.com](mailto:hq@stratmarine.com)  
[ian@dickies.co.uk](mailto:ian@dickies.co.uk)  
[ianre@dongenergy.co.uk](mailto:ianre@dongenergy.co.uk)  
[info.uk@stenaline.com](mailto:info.uk@stenaline.com)  
[info@clydeport.co.uk](mailto:info@clydeport.co.uk)  
[info@mezeron.com](mailto:info@mezeron.com)  
[info@m-h-a.co.uk](mailto:info@m-h-a.co.uk)  
[info@rnli.org.uk](mailto:info@rnli.org.uk)  
[info@whitehavenhc.org.uk](mailto:info@whitehavenhc.org.uk)  
[information@detini.gov.uk](mailto:information@detini.gov.uk)  
[iomfishermen@manx.net](mailto:iomfishermen@manx.net)  
[jim@awjmarine.co.uk](mailto:jim@awjmarine.co.uk)  
[jmichel@north-ayrshire.gov.uk](mailto:jmichel@north-ayrshire.gov.uk)  
[john.bateman@shell.com](mailto:john.bateman@shell.com)  
[johnentwistle@wirral.gov.uk](mailto:johnentwistle@wirral.gov.uk)

[s.alexander@sff.co.uk](mailto:s.alexander@sff.co.uk)  
[s.atkins@nw-ifca.gov.uk](mailto:s.atkins@nw-ifca.gov.uk)  
[scalden@dsml.co.uk](mailto:scalden@dsml.co.uk)  
[sff@sff.co.uk](mailto:sff@sff.co.uk)  
[sprince@dsml.co.uk](mailto:sprince@dsml.co.uk)  
[stephen.hemphill@mutual-energy.com](mailto:stephen.hemphill@mutual-energy.com)  
[steve.davie@xodusgroup.com](mailto:steve.davie@xodusgroup.com)  
[steve.gallimore@merseydocks.co.uk](mailto:steve.gallimore@merseydocks.co.uk)  
[Stevie.travis@mcga.gov.uk](mailto:Stevie.travis@mcga.gov.uk)  
[stliv@dongenergy.co.uk](mailto:stliv@dongenergy.co.uk)  
[stuart.carruthers@rya.org.uk](mailto:stuart.carruthers@rya.org.uk)  
[Tariq.Amin@eni.com](mailto:Tariq.Amin@eni.com)  
[tony@ramsey-steamship.com](mailto:tony@ramsey-steamship.com)  
[vanoc@dongenergy.co.uk](mailto:vanoc@dongenergy.co.uk)  
[vts.portoperations@merseydocks.co.uk](mailto:vts.portoperations@merseydocks.co.uk)  
[wag-en@mailuk.custhelp.com](mailto:wag-en@mailuk.custhelp.com)  
[walneytraffic@dongenergy.dk](mailto:walneytraffic@dongenergy.dk)  
[will.calderbank@portofmostyn.com](mailto:will.calderbank@portofmostyn.com)  
[WM.Belfast@mcga.gov.uk](mailto:WM.Belfast@mcga.gov.uk)  
[WM.clyde@mcga.gov.uk](mailto:WM.clyde@mcga.gov.uk)  
[wm.holyhead@mcga.gov.uk](mailto:wm.holyhead@mcga.gov.uk)  
[wm.liverpool@mcga.gov.uk](mailto:wm.liverpool@mcga.gov.uk)  
[wm\\_holyhead@mcga.gov.uk](mailto:wm_holyhead@mcga.gov.uk)  
[Wm\\_liverpool@mcga.gov.uk](mailto:Wm_liverpool@mcga.gov.uk)  
[wyn.parry@stenaline.com](mailto:wyn.parry@stenaline.com)  
[XASCO@dongenergy.co.uk](mailto:XASCO@dongenergy.co.uk)  
[xmrob@dongenergy.dk](mailto:xmrob@dongenergy.dk)