

RWE Innogy UK

Gwynt y Mor Offshore Wind Farm

Marine Coordinator Notice To Mariners

Issued by : Gwynt y Mor Marine Coordinator

Date of Issue: 03-12-15

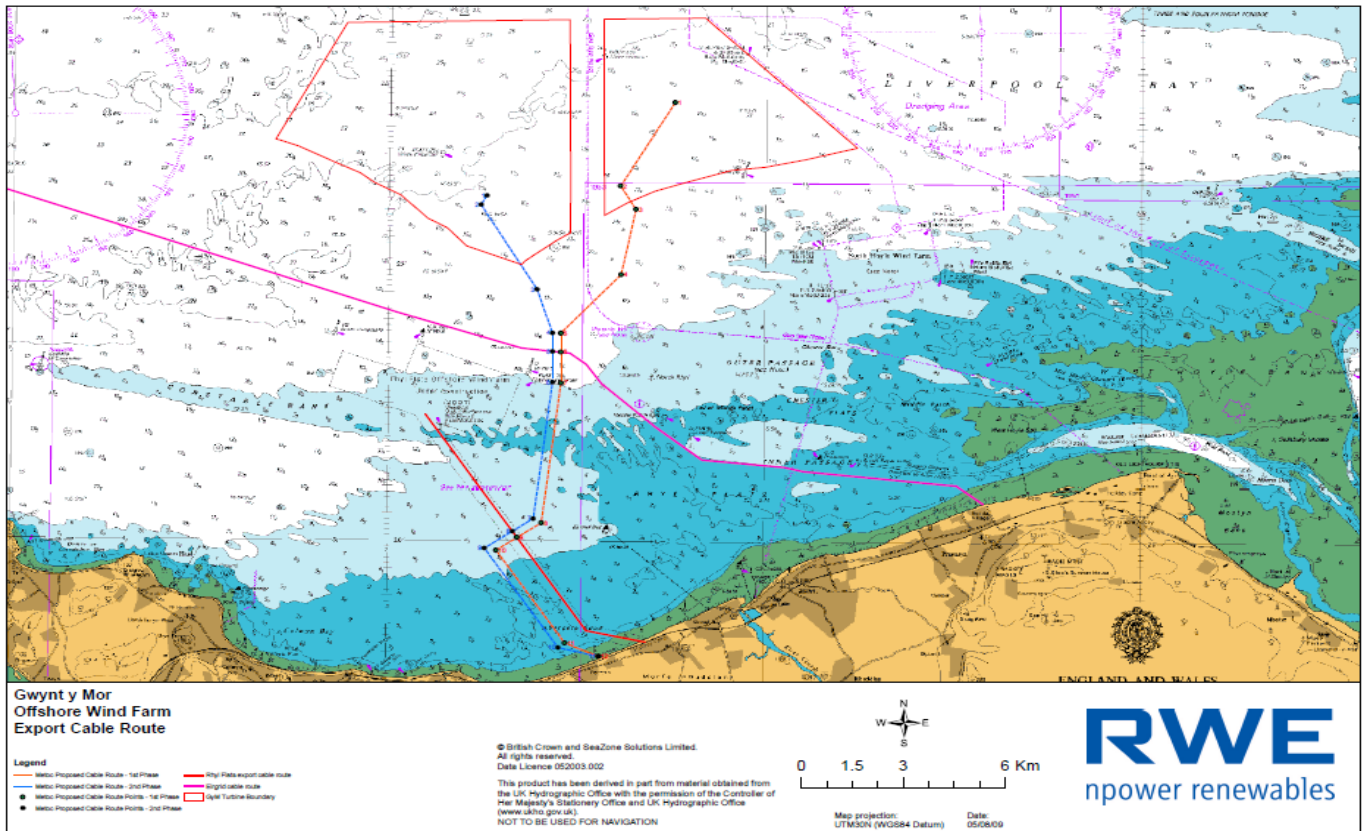
NTM no : GyM 06-2015

For enquiries on this Notice to Mariners please contact:

[gareth.potts@rwe.com](mailto:gareth.potts@rwe.com) or 07901 009628  
[gym.mcc@rwe.com](mailto:gym.mcc@rwe.com) or 07827 244495



**“Stemat Spirit” - Subsea Export Cable Works**  
**Duration: From 06th December 2015 until further notice.**



**Gwynt Y Mor Offshore Wind Farm site**

Please be advised that on or around 6<sup>th</sup> of December 2015, The cable vessel "Stemat Spirit" is expected to arrive on location for RWE to commence works on a subsea export cable in approx. position, Lat: 53°21.86'N, Long 003°35.8'W.

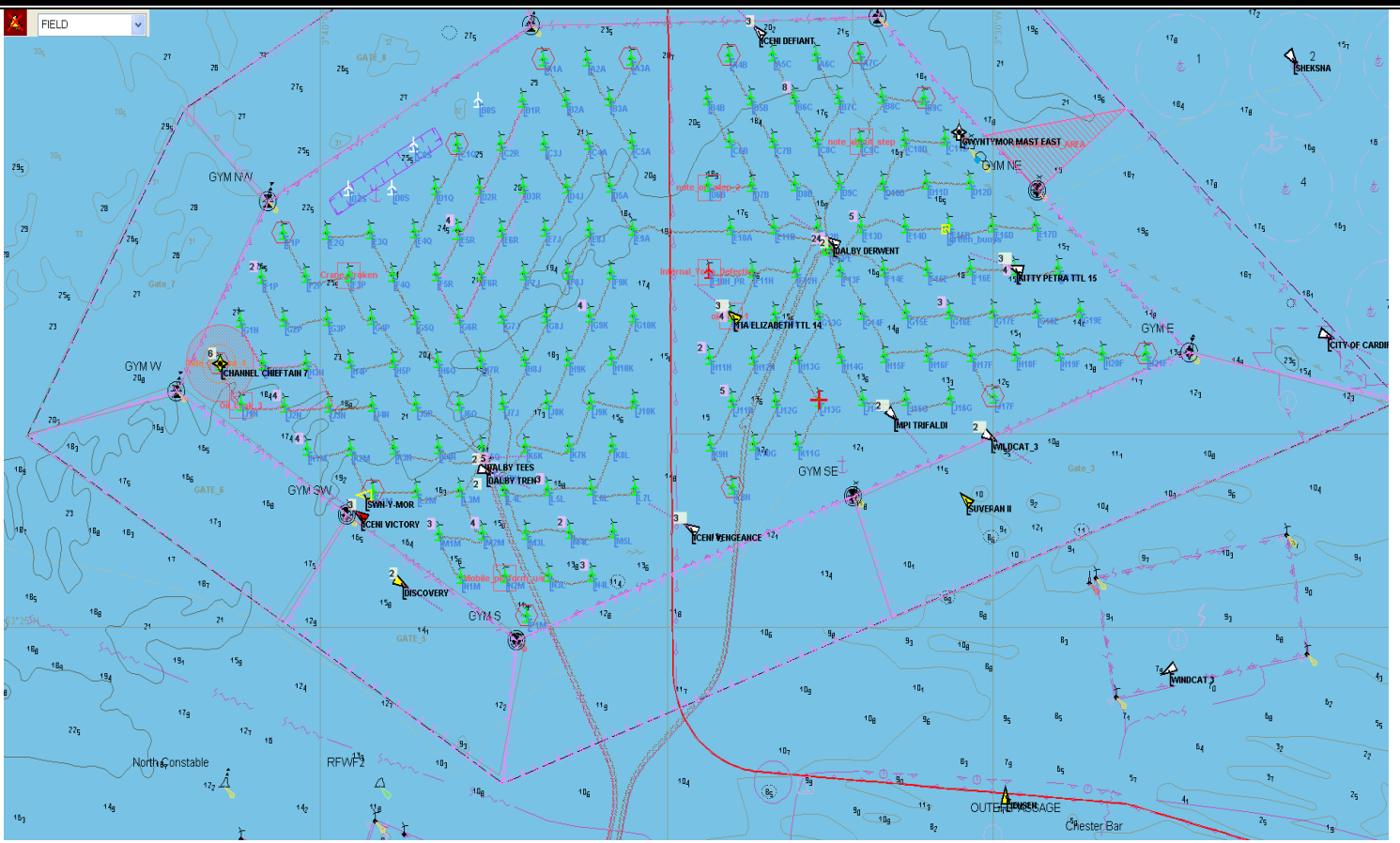
The vessel will predominantly be on DP, however all vessels are asked to give a wide berth of a recommended 500m to avoid any clash.

All vessels will be carrying out a listening watch on VHF 16 at all times.

**Fishermen should be aware there may be occasions when sea bed cables will remain unburied and unprotected on the sea bed [within the boundaries of the wind farm] to this end they should keep in touch with the Marine Coordination centre for the wind farm on 01793 893438 or mob 07827244495 and VHF16**



**'Stemat Spirit'**



**Gwynt Y Mor Offshore Wind Farm**

Please forward as required