

NOTICE TO MARINERS

Issue Date: 8th December 2015

Western Link Project

Deep water cable installation in Liverpool Bay: Wet Storage of Cable

Mariners are advised that a 28km length of cable has been temporarily surface laid along the Western HVDC Link cable route due to the recent bad weather. This notice provides information on the location of the exposed cable, and guidance to mariners operating in the area.

The surface laid cable lies between the following points, illustrated in Figure 1:-

- Start of wet storage: 53°50.173'N 004°02.367'W
- End of wet storage: 53°53.514'N 004°27.040'W

The as laid cable installation details are given in Table 1 of Appendix 1 of this Notice. This location is parallel to, and 20m north, of the most recently laid section of the Western Link cable.

Vessels are requested to pass at a safe speed and distance and fishing vessels are advised to operate at a safe distance (approximately 1.5 nautical miles) from the area identified. Guard Vessels have been deployed to aid in monitoring the exposed cable and to advise of safe distances locally.

The cable in wet storage will be recovered, jointed to the installed cable, and buried during 2016.

Details of the cable route and installation schedule were given in the notice to mariners issued on 16th November 2015.

PRYSMIAN POWERLINK

December 2015

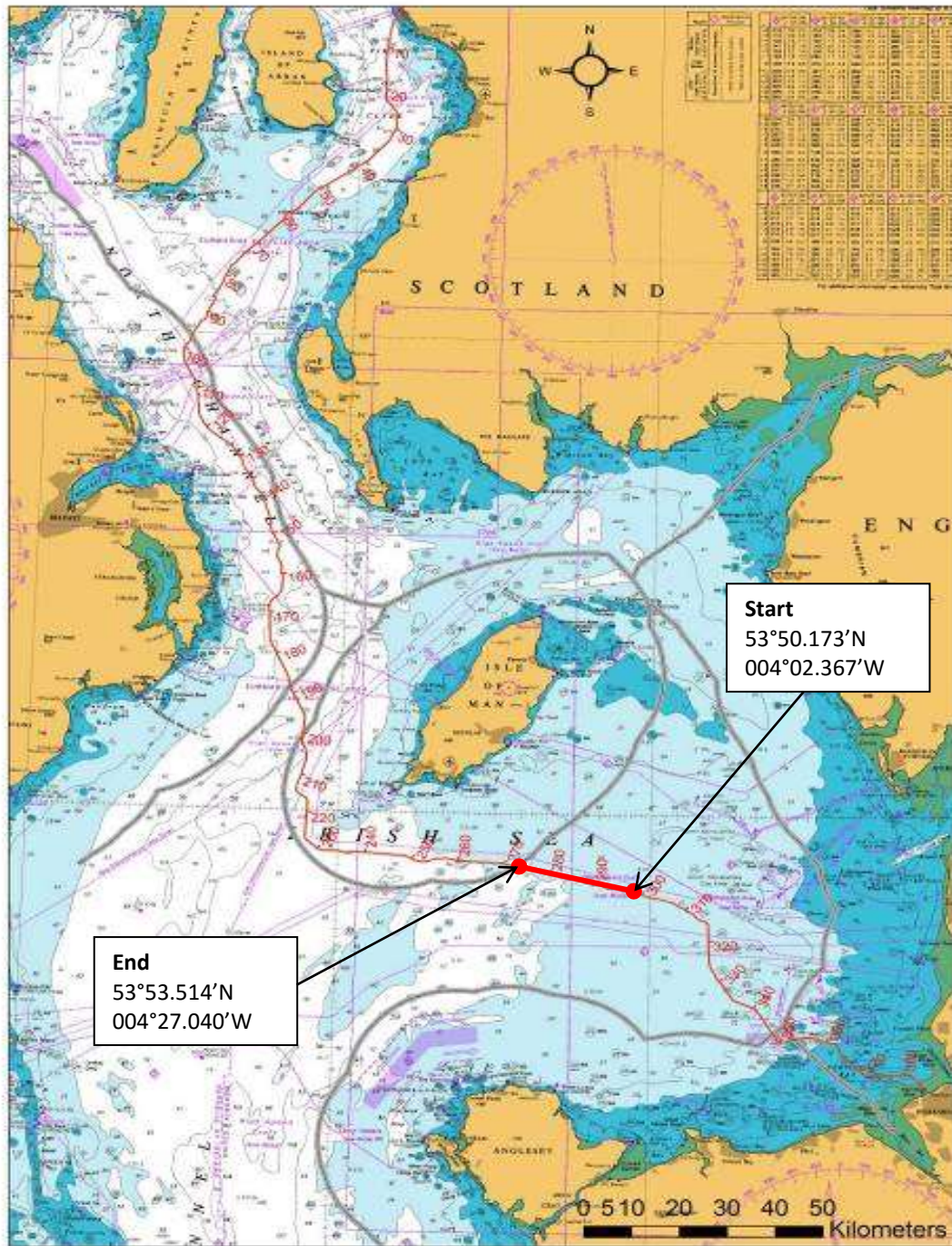


Figure 1 – Western Link cable route showing general location of surface laid cable in wet storage.

APPENDIX 1

Table 1 – As laid location of Western HVDC Wet Storage

ID	KP From Wirral	Location				Note
		Easting	Northing	Latitude	Longitude	
1	88031	431599.0	5965800.2	53°50.173'N	4°2.367'W	Initial Clump Weight on the Seabed
2	88251	431392.8	5965816.7	53°50.18'N	4°2.555'W	Initial Cable Head on the Seabed
3	88601	431043.3	5965829.4	53°50.184'N	4°2.874'W	
4	88705	430938.8	5965832.7	53°50.185'N	4°2.969'W	
5	88734	430910.7	5965836.2	53°50.187'N	4°2.994'W	
6	89030	430619.5	5965889.0	53°50.213'N	4°3.261'W	
7	89091	430559.3	5965900.9	53°50.219'N	4°3.316'W	
8	89266	430391.4	5965952.4	53°50.245'N	4°3.469'W	
9	89553	430118.9	5966042.3	53°50.292'N	4°3.719'W	
10	89684	429991.9	5966071.0	53°50.306'N	4°3.835'W	
11	89749	429927.8	5966081.9	53°50.312'N	4°3.894'W	
12	89955	429722.7	5966105.4	53°50.323'N	4°4.081'W	
13	90117	429563.9	5966136.2	53°50.338'N	4°4.226'W	
14	90266	429417.2	5966161.8	53°50.35'N	4°4.36'W	
15	90552	429147.9	5966259.6	53°50.401'N	4°4.607'W	
16	90702	429000.6	5966287.1	53°50.415'N	4°4.742'W	
17	91025	428678.3	5966275.5	53°50.406'N	4°5.036'W	
18	91111	428591.8	5966277.0	53°50.406'N	4°5.115'W	
19	91150	428553.3	5966282.6	53°50.408'N	4°5.15'W	
20	91229	428475.2	5966291.6	53°50.413'N	4°5.221'W	
21	91413	428309.2	5966372.7	53°50.455'N	4°5.374'W	
22	91614	428142.4	5966484.7	53°50.514'N	4°5.527'W	
23	91676	428088.1	5966513.5	53°50.529'N	4°5.577'W	

ID	KP From Wirral	Location				Note
		Easting	Northing	Latitude	Longitude	
24	92171	427633.3	5966709.3	53°50.631'N	4°5.995'W	
25	92228	427579.3	5966726.4	53°50.64'N	4°6.044'W	
26	92495	427312.0	5966742.0	53°50.646'N	4°6.288'W	
27	92575	427232.7	5966738.9	53°50.644'N	4°6.36'W	
28	92706	427101.3	5966729.8	53°50.638'N	4°6.48'W	
29	92811	426997.2	5966724.9	53°50.634'N	4°6.575'W	
30	93072	426736.9	5966703.5	53°50.62'N	4°6.812'W	
31	93236	426573.4	5966715.7	53°50.625'N	4°6.961'W	
32	93366	426447.3	5966746.3	53°50.641'N	4°7.076'W	
33	94011	425837.8	5966959.1	53°50.75'N	4°7.635'W	
34	94150	425702.5	5966989.7	53°50.766'N	4°7.759'W	
35	94408	425444.4	5967000.6	53°50.769'N	4°7.994'W	
36	94539	425313.1	5967001.1	53°50.769'N	4°8.114'W	
37	94601	425251.9	5967000.8	53°50.768'N	4°8.17'W	
38	94670	425183.0	5967011.9	53°50.773'N	4°8.233'W	
39	94819	425038.2	5967045.9	53°50.79'N	4°8.366'W	
40	94969	424901.5	5967106.3	53°50.822'N	4°8.491'W	
41	95387	424536.3	5967309.7	53°50.928'N	4°8.827'W	
42	95689	424270.4	5967454.3	53°51.004'N	4°9.072'W	
43	95890	424086.2	5967533.6	53°51.045'N	4°9.241'W	
44	96233	423761.1	5967644.3	53°51.102'N	4°9.539'W	
45	96600	423408.3	5967745.0	53°51.153'N	4°9.862'W	
46	97035	422985.6	5967844.5	53°51.203'N	4°10.249'W	
47	97312	422708.1	5967856.9	53°51.207'N	4°10.502'W	
48	97552	422468.1	5967866.0	53°51.21'N	4°10.721'W	
49	97597	422423.1	5967865.1	53°51.209'N	4°10.762'W	

ID	KP From Wirral	Location				Note
		Easting	Northing	Latitude	Longitude	
50	97821	422200.7	5967846.0	53°51.197'N	4°10.965'W	
51	97942	422079.6	5967842.4	53°51.194'N	4°11.075'W	
52	98041	421981.5	5967857.7	53°51.201'N	4°11.165'W	
53	98182	421846.2	5967896.3	53°51.221'N	4°11.289'W	
54	98471	421579.7	5968008.8	53°51.279'N	4°11.534'W	
55	98552	421505.5	5968041.0	53°51.296'N	4°11.602'W	
56	98813	421284.2	5968179.5	53°51.368'N	4°11.806'W	
57	99028	421099.8	5968289.4	53°51.426'N	4°11.976'W	
58	99287	420859.0	5968386.5	53°51.476'N	4°12.197'W	
59	99501	420651.1	5968433.9	53°51.5'N	4°12.387'W	
60	99720	420434.9	5968468.8	53°51.516'N	4°12.585'W	
61	100004	420153.1	5968510.3	53°51.536'N	4°12.843'W	
62	100129	420032.8	5968541.3	53°51.552'N	4°12.953'W	
63	100471	419704.7	5968638.2	53°51.601'N	4°13.254'W	
64	101483	418722.5	5968883.7	53°51.724'N	4°14.153'W	
65	102370	417861.3	5969097.0	53°51.831'N	4°14.942'W	
66	102469	417765.1	5969119.7	53°51.842'N	4°15.03'W	
67	103116	417120.1	5969172.2	53°51.865'N	4°15.619'W	
68	103368	416869.0	5969193.5	53°51.874'N	4°15.849'W	
69	104381	415890.0	5969454.1	53°52.005'N	4°16.746'W	
70	104497	415779.6	5969489.8	53°52.023'N	4°16.847'W	
71	104754	415556.4	5969617.1	53°52.089'N	4°17.053'W	
72	105133	415243.4	5969830.6	53°52.201'N	4°17.342'W	
73	105243	415151.1	5969890.2	53°52.233'N	4°17.427'W	
74	105462	414948.0	5969971.1	53°52.274'N	4°17.614'W	
75	105642	414780.6	5970038.6	53°52.309'N	4°17.768'W	

ID	KP From Wirral	Location				Note
		Easting	Northing	Latitude	Longitude	
76	105765	414662.6	5970072.6	53°52.326'N	4°17.876'W	
77	105948	414483.1	5970107.5	53°52.343'N	4°18.04'W	
78	106171	414262.0	5970134.2	53°52.355'N	4°18.243'W	
79	106244	414188.9	5970143.7	53°52.36'N	4°18.309'W	
80	106652	413793.5	5970243.5	53°52.41'N	4°18.672'W	
81	106710	413736.8	5970256.5	53°52.416'N	4°18.724'W	
82	107384	413070.4	5970356.5	53°52.463'N	4°19.333'W	
83	107476	412980.9	5970377.2	53°52.474'N	4°19.415'W	
84	107742	412724.3	5970448.7	53°52.51'N	4°19.651'W	
85	107944	412527.3	5970492.1	53°52.531'N	4°19.831'W	
86	108068	412404.7	5970509.7	53°52.539'N	4°19.943'W	
87	108373	412099.7	5970513.9	53°52.538'N	4°20.222'W	
88	108663	411823.9	5970603.8	53°52.584'N	4°20.475'W	
89	108819	411675.6	5970651.1	53°52.608'N	4°20.611'W	
90	109000	411496.0	5970673.4	53°52.618'N	4°20.775'W	
91	109124	411372.9	5970687.1	53°52.624'N	4°20.888'W	
92	109274	411227.5	5970724.3	53°52.643'N	4°21.021'W	
93	109467	411049.3	5970799.6	53°52.682'N	4°21.185'W	
94	109840	410723.4	5970981.1	53°52.776'N	4°21.486'W	
95	110042	410537.3	5971060.2	53°52.817'N	4°21.657'W	
96	110552	410051.3	5971212.2	53°52.894'N	4°22.103'W	
97	111661	408976.6	5971486.3	53°53.03'N	4°23.089'W	
98	111770	408872.2	5971518.8	53°53.047'N	4°23.184'W	
99	111986	408666.4	5971582.5	53°53.079'N	4°23.373'W	
100	112074	408578.6	5971596.3	53°53.085'N	4°23.454'W	
101	112482	408170.8	5971608.0	53°53.087'N	4°23.826'W	

ID	KP From Wirral	Location				Note
		Easting	Northing	Latitude	Longitude	
102	113119	407553.4	5971764.5	53°53.165'N	4°24.392'W	
103	113603	407070.7	5971738.9	53°53.146'N	4°24.832'W	
104	113830	406843.4	5971748.8	53°53.149'N	4°25.04'W	
105	114309	406384.8	5971885.5	53°53.218'N	4°25.461'W	
106	114607	406092.1	5971941.7	53°53.245'N	4°25.729'W	
107	114758	405948.5	5971989.8	53°53.269'N	4°25.861'W	
108	115149	405577.7	5972112.0	53°53.331'N	4°26.202'W	
109	115768	405018.5	5972377.3	53°53.468'N	4°26.717'W	
110	115886	404904.7	5972411.5	53°53.485'N	4°26.821'W	
111	115983	404816.4	5972433.2	53°53.496'N	4°26.902'W	Final Cable Head on the Sheave
112	116137	404666.9	5972470.0	53°53.514'N	4°27.04'W	Final Clump Weight on the Sheave

ENDS

Contact Details:

Further enquiries should be addressed to the following contacts:

AWJ Marine	Jim Andrews <i>(who will also coordinate the Fisheries liaison for this operation)</i> jim@awjmarine.co.uk Office: +44 (0) 845-880-2540, Mobile: +44 (0) 7908-225865,
Prysmian Project Manager	Alberto Pirovano alberto.pirovano@prysmiangroup.com Office: +39 02 6449 33590 Mobile: +39 335 5962819
Deep Ocean Project Manager	Steve Marshall SMarshall@deepoceangroup.com Office: +44 (0) 1325 390 655 Mobile: +44 (0) 7740 078 166
Master of Giulio Verne	master@gverne.it VSAT: +39 0553 921155 Mobile: +39 335 5261462 SAT: 00870 773240838
Master of Go Pegasus	master.gopegasus@goasia.com.sg +44 (0) 2036 959051

Distribution List:

abat@eircom.net
admin@welshsailing.org
Alan.Gibson@marinemanagement.org.uk
alana.murphy@rya.org.uk
alasdair.wilkie@hiberniaatlantic.com
Alec.keep@mcga.gov.uk
andre.coccucio@mcga.gov.uk
andrew.sheen@irishferries.com
annette.stube@maersk.com
b.armstrong@sff.co.uk
barrowmc@abports.co.uk
bdeas@nffo.org.uk
blackpool@marinemanagement.org.uk
bryan.davies@heyshamport.com
businessdevelopmentdepartment3@wales.gsi.gov.uk
caroline.price@rya.org.uk, ,
CETI@Centrica.com
Charlie.Mawer@clydeport.co.uk
chris.clark@gov.im
christopherkeogh@transport.ie
'claire.storey@naturalengland.org.uk'
clive.lane@mcga.gov.uk
clyde.coastguard@mcga.gov.uk
colin.brown@mcga.gov.uk
colin.brown@mcga.gov.uk
crousing@rya.co.uk
d.obrien@cil.ie
dale.rodmeil@nffo.org.uk
MerseyMarineManagers@Peelports.com
danny.everitt@mscuk.com
dannymbrien@bge.ie
david.crowther@centrica.com
DEandT@wales.gsi.gov.uk
DeshWebCorrespondence@Wales.GSI.Gov.UK
dlw@seatruckgroup.co.uk
doe.iemonitoring@doeni.gov.uk
doug.percy@transsectormarine.co.uk
dtd@cumbriasfc.fsnet.co.uk
econsentsadmin@scotland.gsi.gov.uk
emmet.mcfadden@mutual-energy.com
emmet.mcfadden@mutual-energy.com
EnergyConsents@scotland.gsi.gov.uk
enquiries@drdni.gov.uk
erecra@talktalk.net
jon.ford@cw.com
jon.ford@vodafone.com
jonwarren@merseywharf.co.uk
josephanik@wirral.gov.uk
Joyce.johnson@mcga.gov.uk
keith.3.brooks@bt.com
keith.3.brooks@bt.com
keith.tatman@mcga.gov.uk
kenneth.poole@cemex.com
Kevin.Best@BHPBilliton.com
kingfisher@seafish.co.uk
liverpool_mo@mcga.gov.uk
lykup@dongenergy.co.uk
mail@liverpoolmarina.com
marine.operations.centre@gov.im
marine.team@bt.com
Mark.Wilber@external.eni.com
mark.woodward@steampacket.com
markthomas@wirral.gov.uk
maurice.smith@esbi.com
mdurcan@bge.ie
Michael.Brew@gov.im
michael.moore9@btinternet.com
mick.mcguckin@mutual-energy.com
MS.marinelicensing@scotland.gsi.gov.uk
n.lauder@sff.co.uk
natkinson@abports.co.uk
navigation.directorate@thls.org
navigation@nlb.org.uk
neil.wellum@marinemanagement.org.uk
nkelly@doehle-iom.com
norman.leece@mezeron.com
nridehalgh@abports.co.uk
'nwplanning@naturalengland.org.uk'
osbornted@aol.com
paul.o'rourke@eirgrid.com
paul.townsend@mcga.gov.uk
peter.hodgetts@thecrownestate.co.uk
peter.jamieson@virginmedia.co.uk
peter.jordan@sse.com
portcontrol@stenaline.com
robert.floyd@wales.gsi.gov.uk
Robert.Whiteley@naturalengland.org.uk
Ron.Bailey@clydeport.co.uk

fisheries@wales.gsi.gov.uk
Fleet.Operations@POferries.com
freighthelp@poferries.com
gedherby@wirral.gov.uk
graeme.proctor@mcga.gov.uk
Gurpal.Ghotra@mutual-energy.com
hannah.birtles@naturalengland.org.uk
hcdfiles@ukho.gov.uk
hdcf@ukho.gov.uk
hdcfiles@ukho.gov.uk
helen.elphick@thecrownestate.co.uk
holyheadcoastguard@mcga.gov.uk
hq@stratmarine.com
ian@dickies.co.uk
ianre@dongenergy.co.uk
info.uk@stenaline.com
info@clydeport.co.uk
info@mezeron.com
info@m-h-a.co.uk
info@rnli.org.uk
info@whitehavenhc.org.uk
information@detini.gov.uk
iomfishermen@manx.net
jim@awjmarine.co.uk
jmichel@north-ayrshire.gov.uk
john.bateman@shell.com
johnentwistle@wirral.gov.uk

s.alexander@sff.co.uk
s.atkins@nw-ifca.gov.uk
scalden@dsml.co.uk
sff@sff.co.uk
sprince@dsml.co.uk
stephen.hemphill@mutual-energy.com
steve.davie@xodusgroup.com
steve.gallimore@merseydocks.co.uk
Stevie.travis@mcga.gov.uk
stliv@dongenergy.co.uk
stuart.carruthers@rya.org.uk
Tariq.Amin@eni.com
tony@ramsey-steamship.com
vanoc@dongenergy.co.uk
vts.portoperations@merseydocks.co.uk
wag-en@mailuk.custhelp.com
walneytraffic@dongenergy.dk
will.calderbank@portofmostyn.com
WM.Belfast@mcga.gov.uk
WM.clyde@mcga.gov.uk
wm.holyhead@mcga.gov.uk
wm.liverpool@mcga.gov.uk
wm_holyhead@mcga.gov.uk
Wm_liverpool@mcga.gov.uk
wyn.parry@stenaline.com
XASCO@dongenergy.co.uk
xmrob@dongenergy.dk