

NOTICE TO MARINERS

Moyle Return Conductor Cables – Rock Placement

Mariners are advised that rock placement work on the first of the Moyle Return Conductor cables is due to take place between the **8th of September and 10th of October 2015**. This notice provides information about the proposed location of the rock placement works and the vessels that will be used for this work.

1. Project description

The Moyle Return Conductor Cables are two undersea cables running between Scotland and Northern Ireland. They are being installed parallel to the existing Moyle Interconnector North and south cables that provide a vital electricity link for Northern Ireland. The Moyle Return Conductor cables are part of a repair and maintenance operation that is intended to provide long-term security to the electricity supply of Northern Ireland.

The landfall coordinates of the cables are given in the table below. More details on the project landfalls are presented in Appendix A of this notice.

Landfall Ireland	Landfall Scotland	Approximate Route length (km)
5°43.231244 W 54°50.760877 N	5°2.573132 W 55°3.558638 N	53

2. Rock placement

The underwater rock placement operations will be carried out at locations between the Northern Irish and Scottish landfalls where cable burial has not been possible.

Rock placement work will be carried out by the vessel(s) Seahorse (fallpipe vessel) and a nearshore spread comprising the following vessels:



Image 1 – SEAHORSE

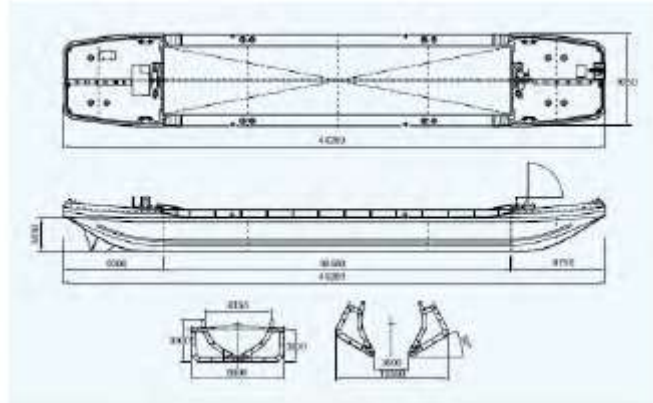


Image 2 – Split hopper barge



Image 3 – DC EEMS

In addition, there will be 3 off smaller tug/ work boats assisting the operation

Whilst the vessels named above are conducting the rock placement and supporting operations, they will be **Restricted in their Ability to Manoeuvre**. All vessels operating within this area are asked to keep clear of the named vessels, 500 metres ahead, 1000 metres abeam and astern of the vessel to maintain a safe distance.

During operations the vessels will display the appropriate day shapes/signals and at times of reduced visibility the appropriate lights as required by the IRPCS. The vessels will also actively transmit an AIS signal. A continuous listening watch will be maintained on VHF Channel 16 and 12 DSC.

Guard vessels

Guard vessels will be stationed as appropriate along the cable routed during installation and burial to ensure the safety of marine users. These vessels are being supplied by the Scottish Fishermen's Federation (SFF) and the National Federation of Fishermen's Organisations (NFFO).

3. Project timetable

The timetable for installation of the two Moyle Returns cables is summarised in the table below.

Activity	North Cable	South Cable
Cable laying	Completed	18 th -26 th October 2015
Cable burial	To be completed approx 20 th September	27 th October – 14 th December 2015
Nearshore rock protection	08 th September – 10 th October 2015	26 th October – 5 th November 2015
Rock protection (fall-pipe)	1 st campaign: 13 th – 25 th of September 2 nd campaign	7 th December 2015 – 13 th January 2016

	TBC	
--	-----	--

4. Project Contact Details:

Name: Oyvind Haug
Role: Nexans Project Engineer
Company: Nexans Norway AS
Tel: +47 22 88 65 09 / +47 916 27 674
E-mail: oyvind.haug@nexans.com

Name: Anne Kari Brænden
Role: Nexans Marine Engineer
Company: Nexans Norway AS
Tel: +47 97 01 13 72
E-mail: anne_kari.brenden@nexans.com

Name: Halvor Snelingen
Role: Nexans Protection Engineer
Company: Nexans Norway AS
Tel: +47 90 03 83 84
E-mail: Halvor.snelingen@nexans.com

Name: Stefan Undén
Role: Nexans Project Manager
Company: Nexans Norway AS
Tel: +47 91 00 12 05
E-mail: stefan.unden@nexans.com

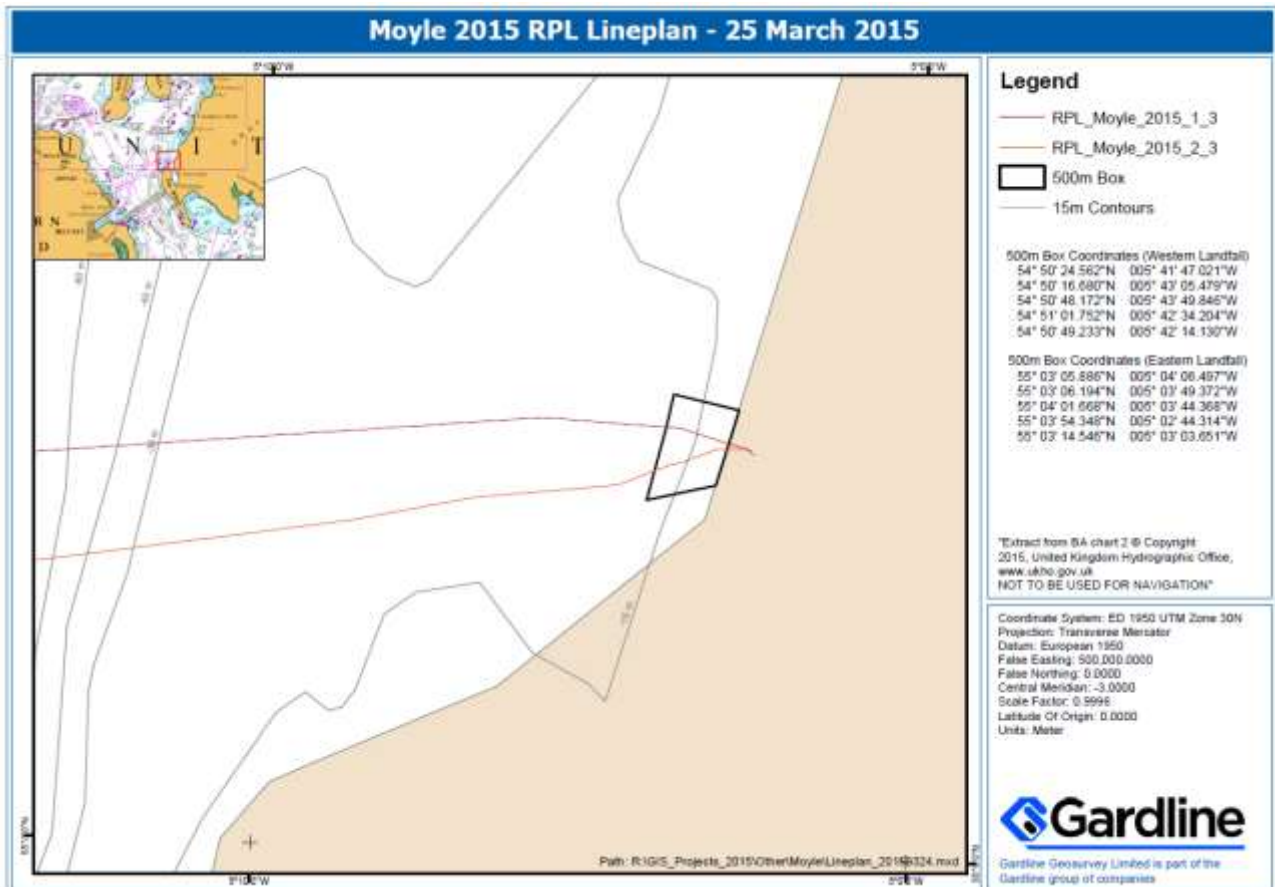
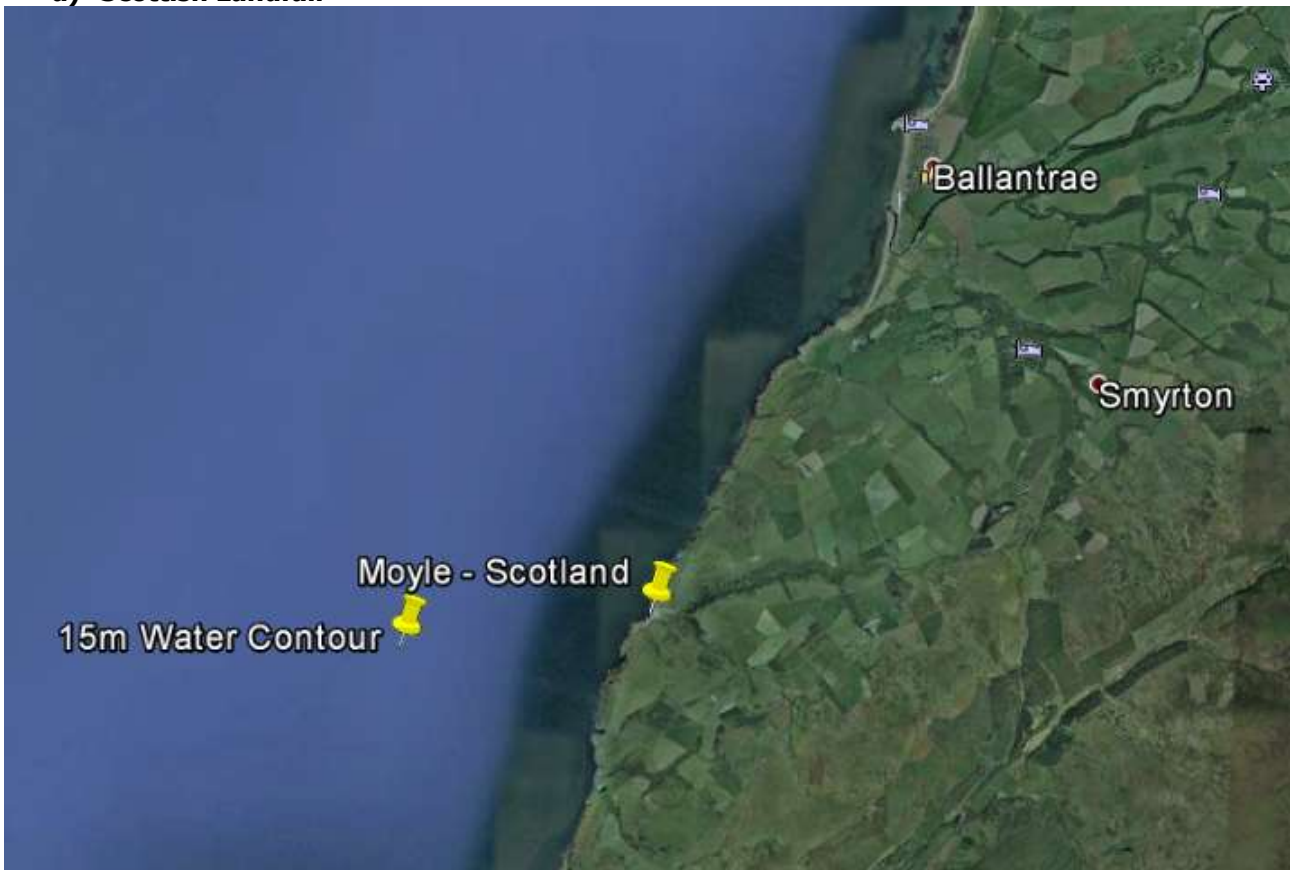
Name: Knut Stenseth
Role: Nexans deputy Project Manager
Company: Nexans Norway AS
Tel: +47 90 92 02 28
E-mail: knut.stenseth@nexans.com

Name: Grahame Tate
Role: Moyle Offshore Installation Manager
Tel: +44 (0) 7540 255556
E-mail: grahame@23degreesrenewables.co.uk

Fisheries Liaison: Jim Andrews
Tel: +44(0)7908-225865
E-mail: jim@awjmarine.co.uk

Appendix A: Landfall details

a) Scottish Landfall



b) Irish Landfall

