



NOTICE TO MARINERS

No 23/15

HDD LINK BETWEEN ARDNEIL BAY AND THE KINTYRE PENINSULAR

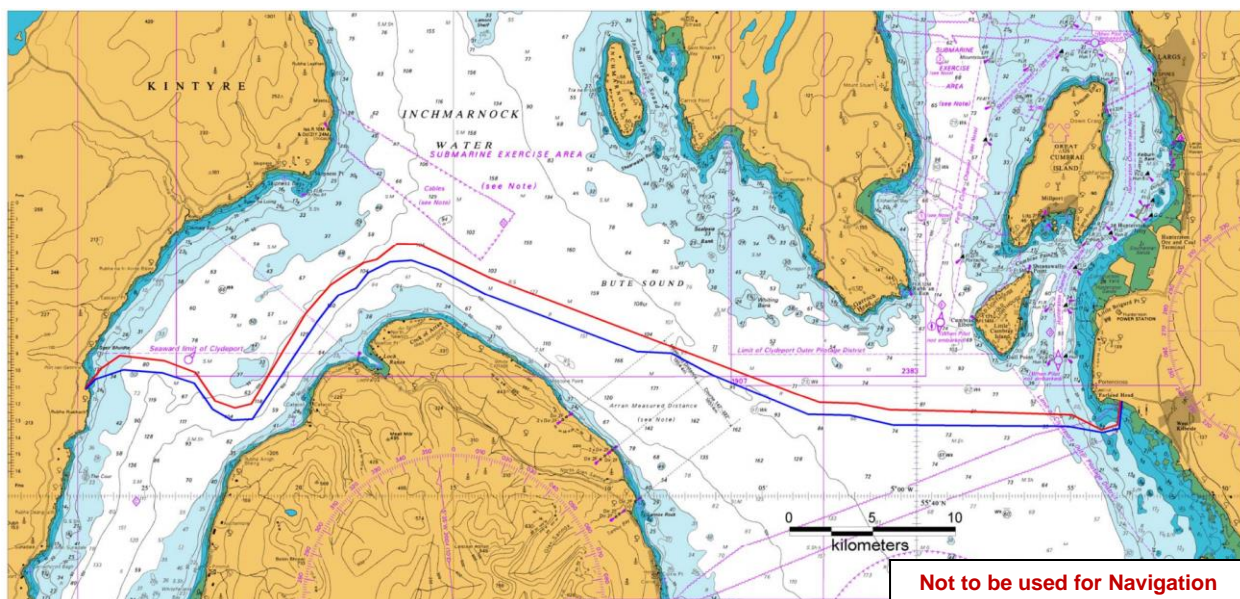
BETWEEN 55°41.74'N 004°53.36'W AND 55°41.97'N 005°26.93'W

ARDNEIL BAY TO PORT A' MHIADAIR UNDERWATER SURVEY

Chart 2131

Mariners are advised that an underwater survey will take place between Ardneil Bay (near Ardrossan) and Port a' Mhiadair (Kintyre Peninsular) from Monday 9th March until, on and about, Friday 3rd April 2015.

The survey will be carried out between 55°41.74'N 004°53.36'W and 55°41.97'N 005°26.93'W and the route is illustrated on the diagram below:



There will be three areas of survey operations, two inshore and one offshore:

Inshore: At Ardneil Bay and Port a' Mhiadair from the shoreline to the 15 metre contour, using Clyde Commercial Divers, their support vessel SHOCKWAVE and an inshore survey vessel TITAN EXPLORER. See Photographs 1 & 2:

KIM Clark, Senior Marine Manager.
Peel Ports Clydeport, Marine Department,
Greenock Ocean Terminal, Patrick Street, GREENOCK, PA16 8UU
Tel: 01475 726221 Fax: 01475 727006
Email: tower_estuary@pelports.com

NTM: 23/15
Page: 1 of 3
Valid from: 4th March 2015
Expiry Date: 31st December 2015



Photograph 1 – SHOCKWAVE



Photograph 2 – TITAN EXPLORER

TITAN EXPLORER will tow an underwater side scanning sonar and a magnetron and Clyde Commercial Divers will conduct a visual survey of the route from the shoreline to the 15 metre contour depth. These operations will take place in daylight hours commencing on Tuesday 10th March until on and about Friday 3rd April 2015. Both vessels will be displaying appropriate shapes and flags for their operations and all vessels are to maintain a safe distance and operate at reduced speed with due regard to the effects of wash.

Offshore: From the 15 metre contour off Ardneil Bay to the 15 metre contour off Port a' Mhiadair, the survey will be conducted by MV OCEAN RELIANCE, see photograph 3, which will be operating a ROV and towing underwater side scanning sonar and a magnetron.



Photograph 3 – SV OCEAN RELIANCE

During the offshore operation the MV OCEAN RELIANCE will conduct 6 runs along the route in three phases working throughout a 24/7 period until completion of the survey:

- Phase 1 – Towed side scanning sonar and magnetron runs along route.
- Phase 2 - ROV based survey using Cougar ROV.
- Phase 3 – ROV Target Investigation.

During survey operations the MV OCEAN RELIANCE and MV TITAN EXPLORER will be towing survey equipment and will be **Restricted in their Ability to Manoeuvre**. MV OCEAN RELIANCE will also be operating a ROV. All vessels operating within this area are to keep clear of MV OCEAN RELIANCE, 500 metres ahead, 1000 metres abeam and astern of the vessel to maintain a safe distance.



During operations the vessels will display the appropriate day shapes/signals and at times of reduced visibility the appropriate lights as required by the IRPCS. The vessels will also actively transmit an AIS signal. A continuous listening watch will be maintained on VHF Channel 16 and 12 DSC. Vessels are to call MV OCEAN RELIANCE for direction on VHF Channel 16 if unsure on her activity.

For further information contact Estuary Control ☎01475-726221 or VHF 12.