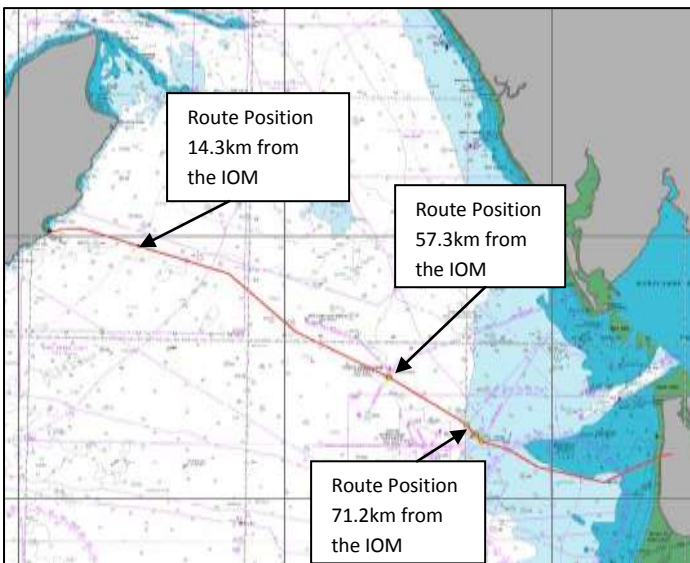


The Manx Cable Company (MCC) a subsidiary of the Manx Electricity Authority (MEA) own and operate the world's longest AC power interconnector between Douglas in the Isle of Man and Blackpool.

The original installation obtained a burial depth of approximately 1 to 2.5mtrs although at a number of points the cable was surfaced laid to facilitate jointing and third-party crossings.

To protect the surface laid cable from fishing and vessel activity in the vicinity of the cable route protective mattresses were installed at a number of points along the route, three sections where such matting was installed are shown below in Fig:1.

Fig: 1 - Cable Route and Mattresses



Mattresses co-ordinates:

Route Position: 14.3km

54° 07.68' N 4° 15.36' W to 54° 07.62' N 4° 15.18' W

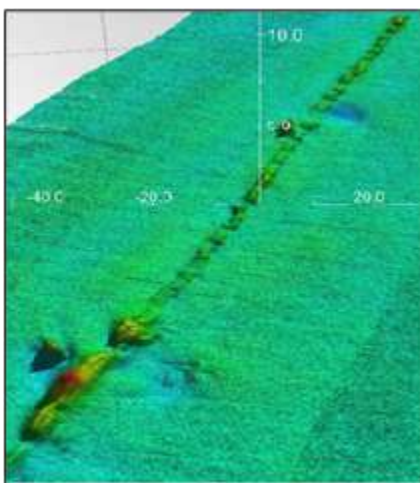
Route Position: 57.3km

53° 57.24' N 3° 40.80' W to 53° 57.12' N 3° 40.50' W

Route Position: 71.2km

53° 53.34' N 3° 30.00' W to 53° 53.22' N 3° 29.82' W

Part of the MCC maintenance procedures involves regular surveys of the cable route to confirm that the cable, where buried, remains buried at a suitable depth to provide adequate protection, and to identify any regions of significant scour, third party activity or displacement of mattresses etc that may have developed.



Recent survey results have indicated movement of a number of mattresses has occurred at Route Position 57.3km from the Isle of Man, shown in Fig: 2, which exposes the cable to an increased risk of third-party damage.

To undertake a marine operation to replace the damaged section of matting will be a significant cost the Manx Cable Company.

Therefore it would be greatly appreciated if vessels undertaking ground fishing activities could exercise precaution when operating in the vicinity of the matted areas identified above to minimise the risk to both vessels and the interconnector in the future.

Fig: 2 Survey Results

For further information, please contact: Stephen McGhee, Manx Electricity Authority, Tel: 07624 498792, email: steve.mcghee@mea.gov.im