

RWE npower renewables
Gwynt y Mor Offshore Wind Farm
Marine Coordinator Notice To Mariners

Issuer : Gwynt y Mor Marine Coordinator

Date of Issue: 19.06.12

NTM no : NAV - 014

For enquiries on this Notice to Mariners please contact:

lee.cornwell@rwe.com or 07557 319473

gymmarinecoordinators@ymail.com
or 07827 24495



Commencement of Export Cable Works

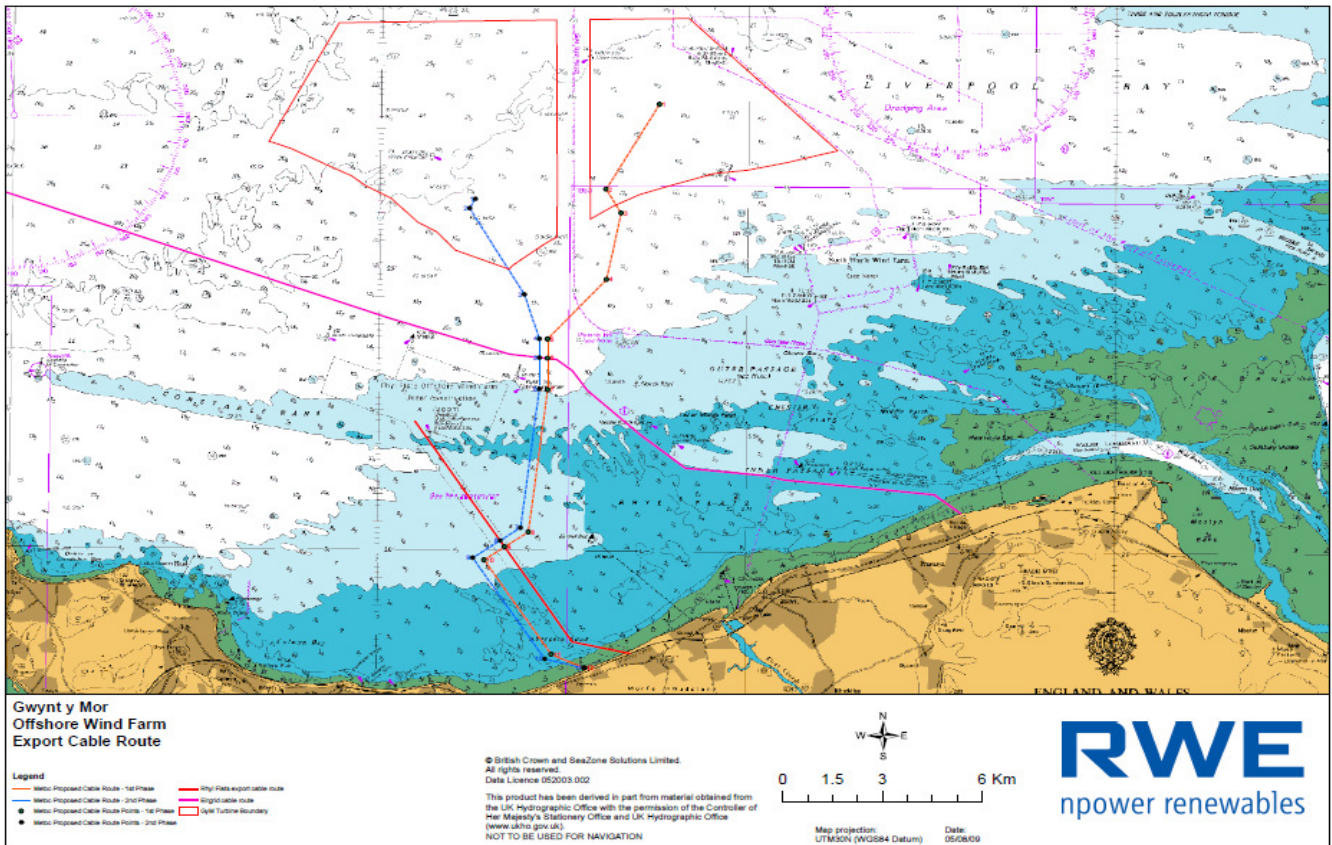
Duration: July 2012 until further notice

Please be advised that Export Cable Works are expected to commence during the month of July 2012 at Gwynt y Mor Offshore Wind Farm. These works will last until further notice.

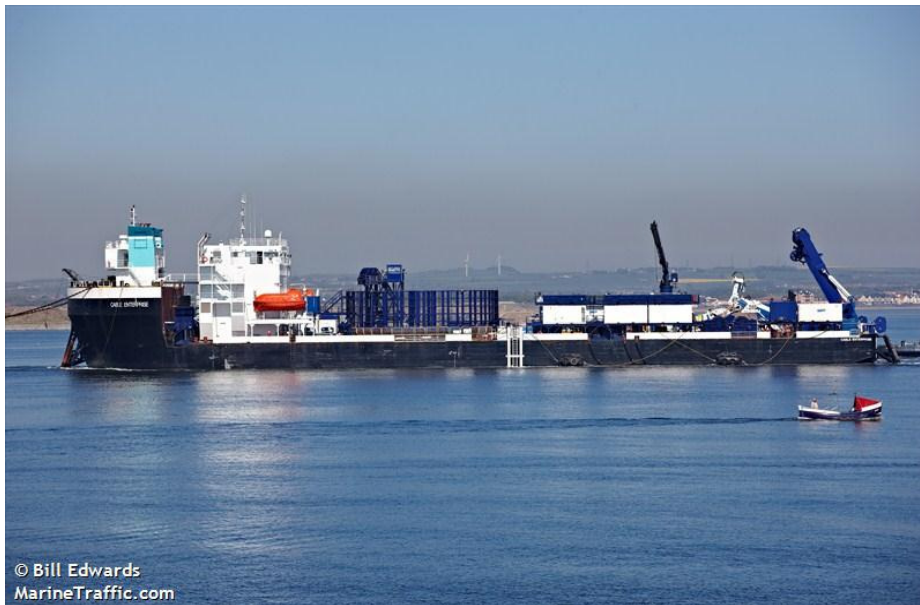
The works will commence on the beach at Pensarn and will follow the route as laid out below on the chart. There will be 4 export cables in total. 2 cables from the beach at Pensarn (Blue Line) leading to the Offshore Sub Station West platform and 2 cables from the beach at Pensarn (Orange Line) leading to the Offshore Sub Station East platform.

The Cable Installation Barge "Cable Enterprise" will be installing the cables. Cable Enterprise will be supported by the Fairplay 27 (Lead Tug), MCS Ailsa (Support Vessel) and Whalsa Lass (Support Vessel).

All vessels are requested to keep at least 1000m clear of the Cable Installation Barge at all times when on location. Prior to cable installation operations, there will be a PLGR (Pre Lay Grapnel Route Survey) carried out by MCS Ailsa. This will follow the cable installation routes as mentioned. This may commence as early as 21st June 2012. All vessels are requested to give 500m clearance of MCS Ailsa at all times. All vessels will be contactable on VHF 16.



Admiralty Chart Layout of Gwynt y Mor including Export Cable Routes



Cable Installation Barge – Cable Enterprise



Lead Tug – Fairplay 27



Support Vessel – Whalsa Lass



Support Vessel MCS Ailsa

Distribution: As per GyM Notices To Mariners Distribution List. Please feel free to share the information.

If you don't wish to receive updated notices for the project, please contact the person(s) named above.