

Notice to Mariners

Marine Surveys of the Moyle Interconnector and Larne and Belfast Lough Crossing Pipelines – MUTUAL ENERGY LIMITED

AUGUST 2020

Please be advised that marine geophysical survey campaigns will commence over the Moyle Interconnector, the Scotland to Northern Ireland Pipeline (SNIP) and Larne and Belfast Lough Crossing pipelines in September 2020 – see Figures 1-3 below for locations of these assets. The survey will be split into nearshore work and offshore work, with relevant details provided below.

Details	Nearshore Survey	Offshore Survey
Planned Start Date	31 st August 2020	10 th September 2020
<u>Provisional</u> Finish Date	5 th September 2018	1 st October 2020
Survey Contractor	Ultrabeam Hydrographic	GEOxyz
Survey Vessel	USS Accession Class / MV Ocean Crest	GEO OCEAN IV
Length	11.0 m	41.9 m
Draught	1.0m	5.2 m
Beam	4.0m	9.1 m
MMSI	235093649	253641000
Call Sign	2FR03	LXHD
		

Both survey vessels will be towing survey equipment at all times. **Therefore, all mariners are requested to maintain a safe distance (500 m) from the survey vessels at all times.**

The survey vessels will be able to be contacted on VHF Channel 16 during survey operations. All other contact should be directed to Shane Rafferty at Mutual Energy.

Shane Rafferty – Project Lead

Shane.Rafferty@mutual-energy.com

Tel: +442890437586

Mobile: +447495465308

Figure 1: Location of Moyle Interconnector

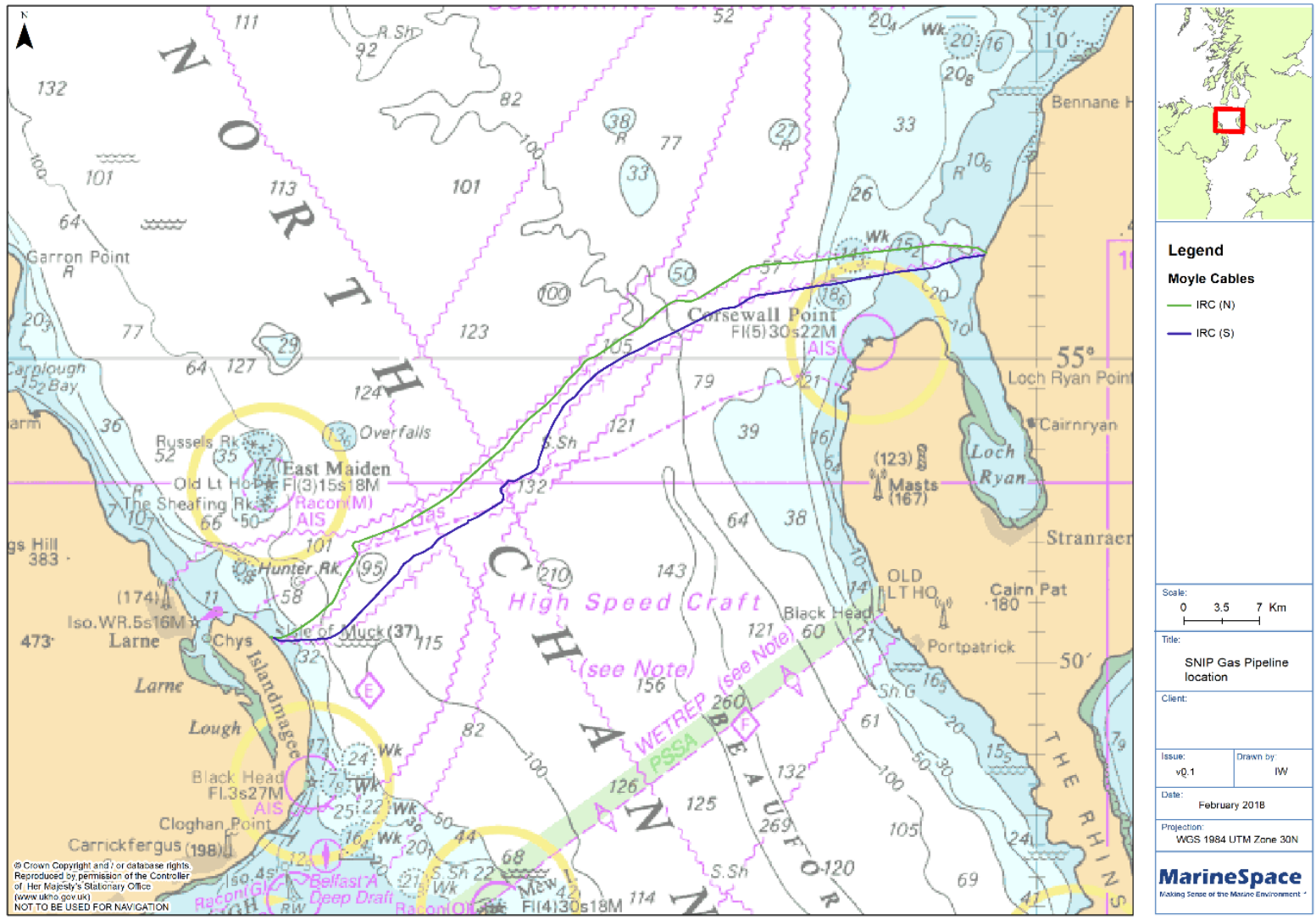


Figure 2: Location of Scotland to Northern Ireland Pipeline (SNIP)

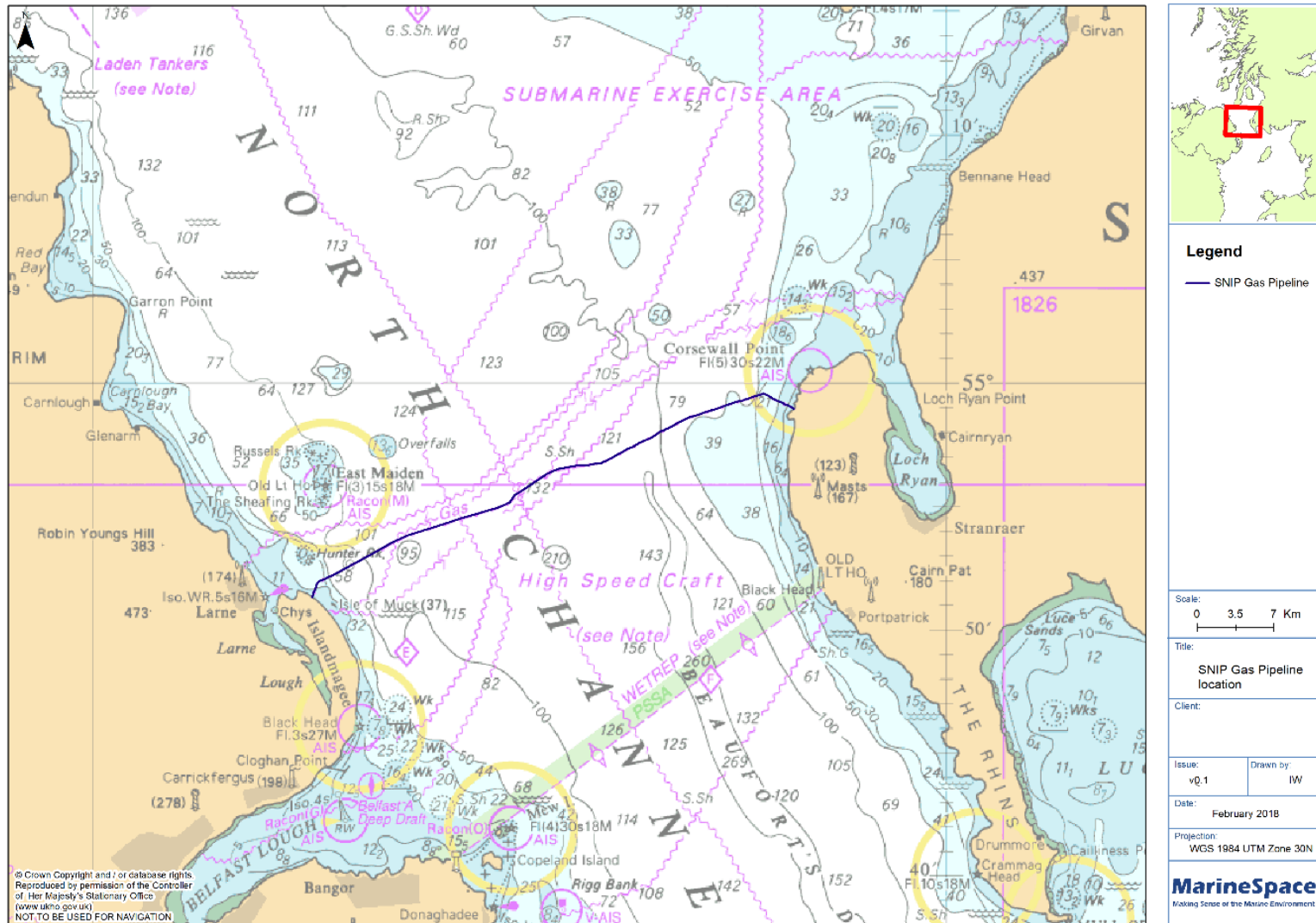


Figure 3: Location of the (a) Belfast Lough Crossing (BLC) and (b) Larne Lough Crossing (LLC)

