

# NOTICE TO MARINERS

**Issue Date: 3<sup>rd</sup> October, 2019**

**Western Link Project**

**Cable installed in Irish Sea – Exposed cable sections**

**Rock Placement Works**

Mariners are advised that following the completion of the urgent operations required to an offshore section installed during the Western Link Campaign 6 in the Irish Sea, Rock Placement works are now starting for the short sections of exposed cable previously communicated at the location shown in **Table 1**.

Following a recent survey on the Western Link cable, a mattress was found removed at the Lanis 3 (2) Crossing at Kp 59.6. In combination with the above Rock Placement works we are therefore planning to protect the small area left exposed by the removed mattress with Rock Placement at the location shown in **Table 2**.

The works are expected to be completed in few days.

The Rock Placement work is being carried out by **Van Oord** using **Nordnes** (IMO 9229910; Call Sign PHOG) Rock Placement vessel.

**Vessels are requested to pass at a safe speed and distance and fishing vessels are advised to remain a safe distance (approximately 1.5 nautical miles) from the area identified.**

**The vessel will monitor VHF Channel 16 at all times.**

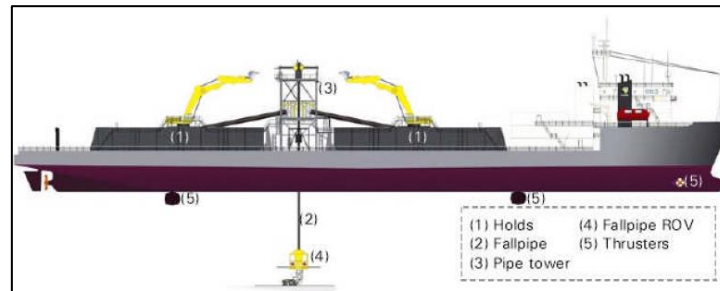


***Rock Placement vessel - Nordnes***

## Rock Placement

The Rock Placement operations as indicated in Figure 1 with the use of a subsea burial tool will have restricted manoeuvrability as it completes its work scope.

Guard vessel which has previously been stationed to monitor the cable and provide advice to mariners, will remain in position until the post protection has been completed.



**Figure 1 – Rock Placement arrangement**

	KP	Easting	Northing	LAT	LONG
From	147.456	354833.39	6053064.47	54° 36' 14.9" N	005° 14' 50.9" W
To	148.074	354768.84	6052457.45	54° 35' 55.2" N	005° 14' 53.4" W

**Table 1 – Area of Exposed Sections**

KP	Easting	Northing	LAT	LONG
59.6	359040.88	612610.21	55° 15.675'N	005° 13.092'W

**Table 2 – Removed Mattress at Lanis 3 (2)**

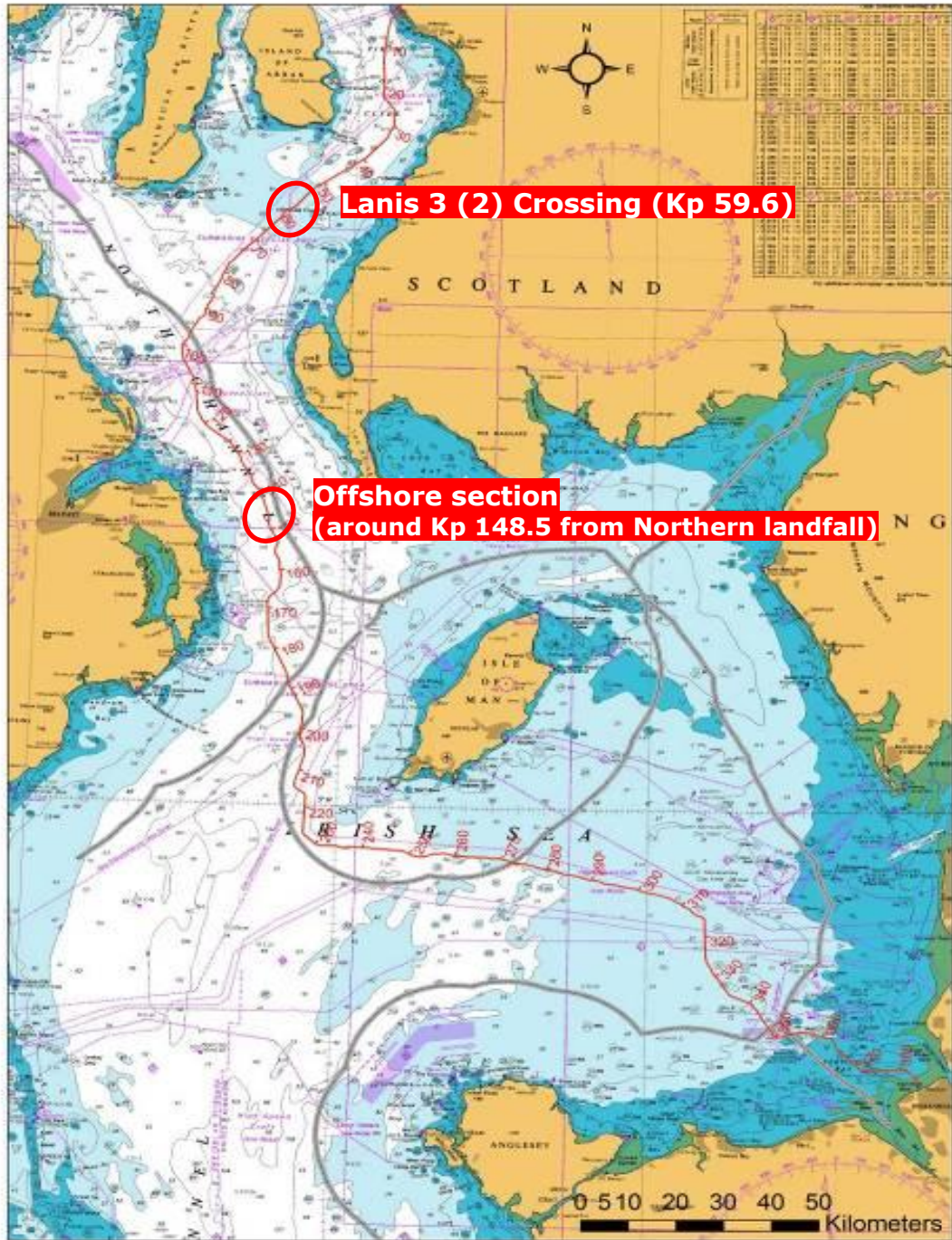


Figure 2 - Western Link cable route – Offshore section

### Contact Details:

Further enquiries should be addressed to the following contacts:

AWJ Marine

Jim Andrews

*(who will also coordinate the Fisheries liaison for this operation)*

[jim@awjmarine.co.uk](mailto:jim@awjmarine.co.uk)

Office: +44 (0) 845-880-2540,

Mobile: +44 (0) 7908-225865,

Prysmian Project Manager

Alberto Pirovano

[alberto.pirovano@prysmiangroup.com](mailto:alberto.pirovano@prysmiangroup.com)

Office: +39 02 6449 33590

Mobile: +39 335 5962819