

NOTICE TO MARINERS

Issue Date: 7th June, 2019

Western Link Project

Cable installed in Irish Sea – Urgent operations

Exposed cable sections

Mariners are advised that following the completion of the urgent operations required to an offshore section installed during the Western Link Campaign 6 in the Irish Sea, there are short sections of exposed cable at the location shown in **Table 1**.

Vessels are requested to pass at a safe speed and distance and fishing vessels are advised to remain a safe distance (approximately 1.5 nautical miles) from the area identified. A Guard Vessel has been deployed at this location to aid in monitoring the exposed area and advise of safe distances locally.

Burial of the exposed sections of cable is planned to commence late summer; updates of the associated vessel and works duration will be sent through designated notice to mariners in due course.

	KP	Easting	Northing	LAT	LONG
From	147.456	354833.39	6053064.47	54° 36' 14.9" N	005° 14' 50.9" W
To	148.074	354768.84	6052457.45	54° 35' 55.2" N	005° 14' 53.4" W

Table 1 – Area of Exposed Sections

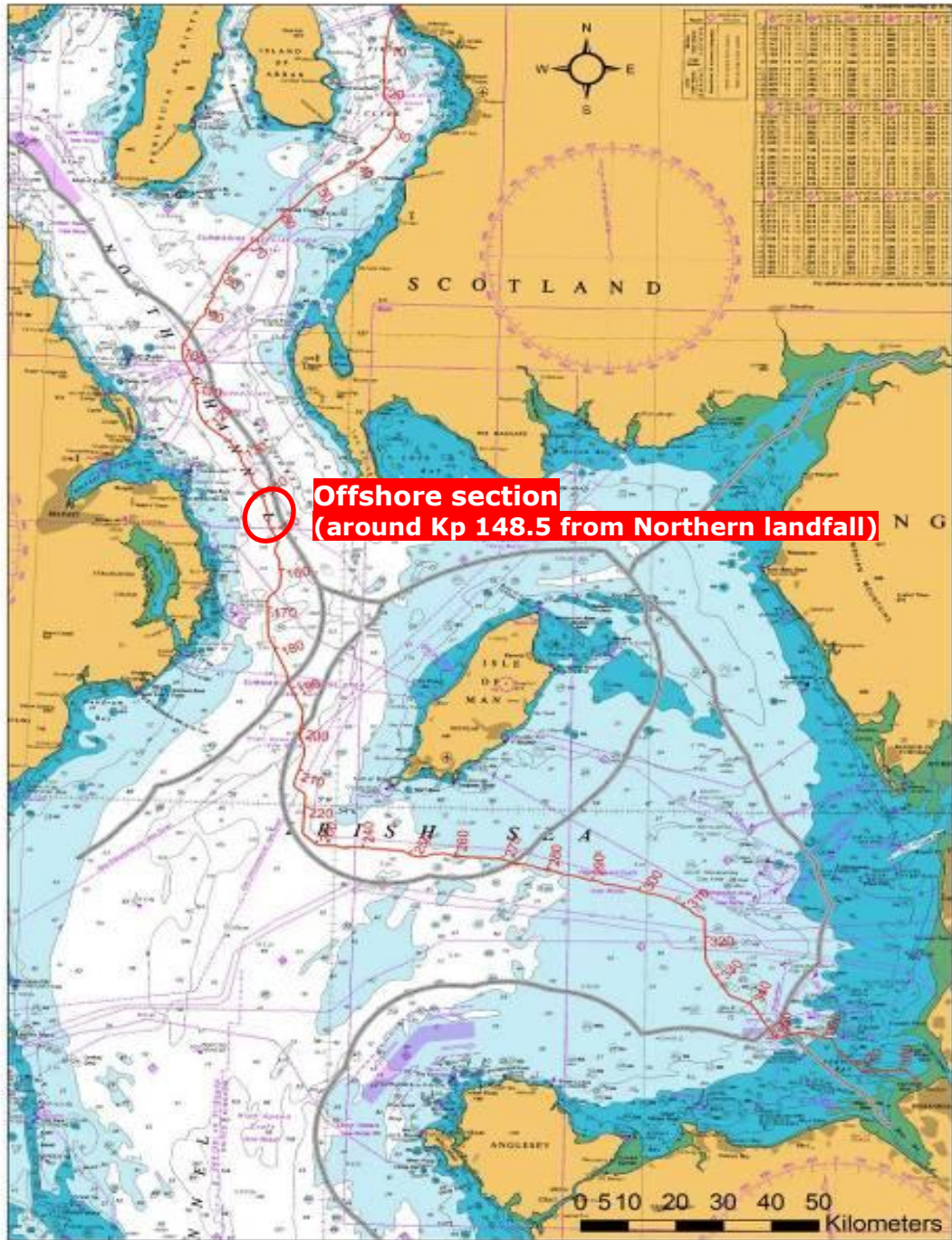


Figure 1 - Western Link cable route – Offshore section

Contact Details:

Further enquiries should be addressed to the following contacts:

AWJ Marine

Jim Andrews

(who will also coordinate the Fisheries liaison for this operation)

jim@awjmarine.co.uk

Office: +44 (0) 845-880-2540,

Mobile: +44 (0) 7908-225865,

Prysmian Project Manager

Alberto Pirovano

alberto.pirovano@prysmiangroup.com

Office: +39 02 6449 33590

Mobile: +39 335 5962819