



## Notice to Mariners

### Marine Surveys of the Moyle Interconnector and Scotland to Northern Ireland Pipeline (SNIP) - MUTUAL ENERGY LIMITED

29<sup>th</sup> August 2018

Please be advised that a marine geophysical survey will commence over the Moyle Interconnector and Scotland to Northern Island Pipeline (SNIP) in September 2018. The survey will also cover the Larne Lough Crossing and Belfast Lough Crossing pipelines taking place in August/September 2018 – see Figures 1-3 (attached) for locations of these assets. The survey will be split into nearshore work and offshore work, with relevant details provided below.

Details	Nearshore Survey (underway)	Offshore Survey
Planned Start Date	14 <sup>th</sup> August 2018	2 <sup>nd</sup> September 2018
Provisional Finish Date	28 <sup>th</sup> September 2018	3 <sup>rd</sup> October 2018
Survey Contractor	DOF Subsea (Titan Environmental Surveys)	DOF Subsea
Survey Vessel	MV Titan Discovery	Geosund
Length	13 m	98.5 m
Draught	1.2 m	5.9 m
Beam	5 m	18.8 m
		

Both survey vessels will be towing survey equipment at all times. **Therefore, all mariners are requested to maintain a safe distance (500 m) from the survey vessels at all times.**

**Contact Details:** The survey vessels will be able to be contacted on **VHF Channel 16** during survey operations. All other contact should be directed to Shane Rafferty at Mutual Energy.

Shane Rafferty – Project Lead  
[Shane.Rafferty@mutual-energy.com](mailto:Shane.Rafferty@mutual-energy.com)  
Tel: +442890437586  
Mobile: +447495465308

Figure 1 Location of Scotland to Northern Ireland Pipeline (SNIP)



Figure 2 Location of Moyle Interconnector

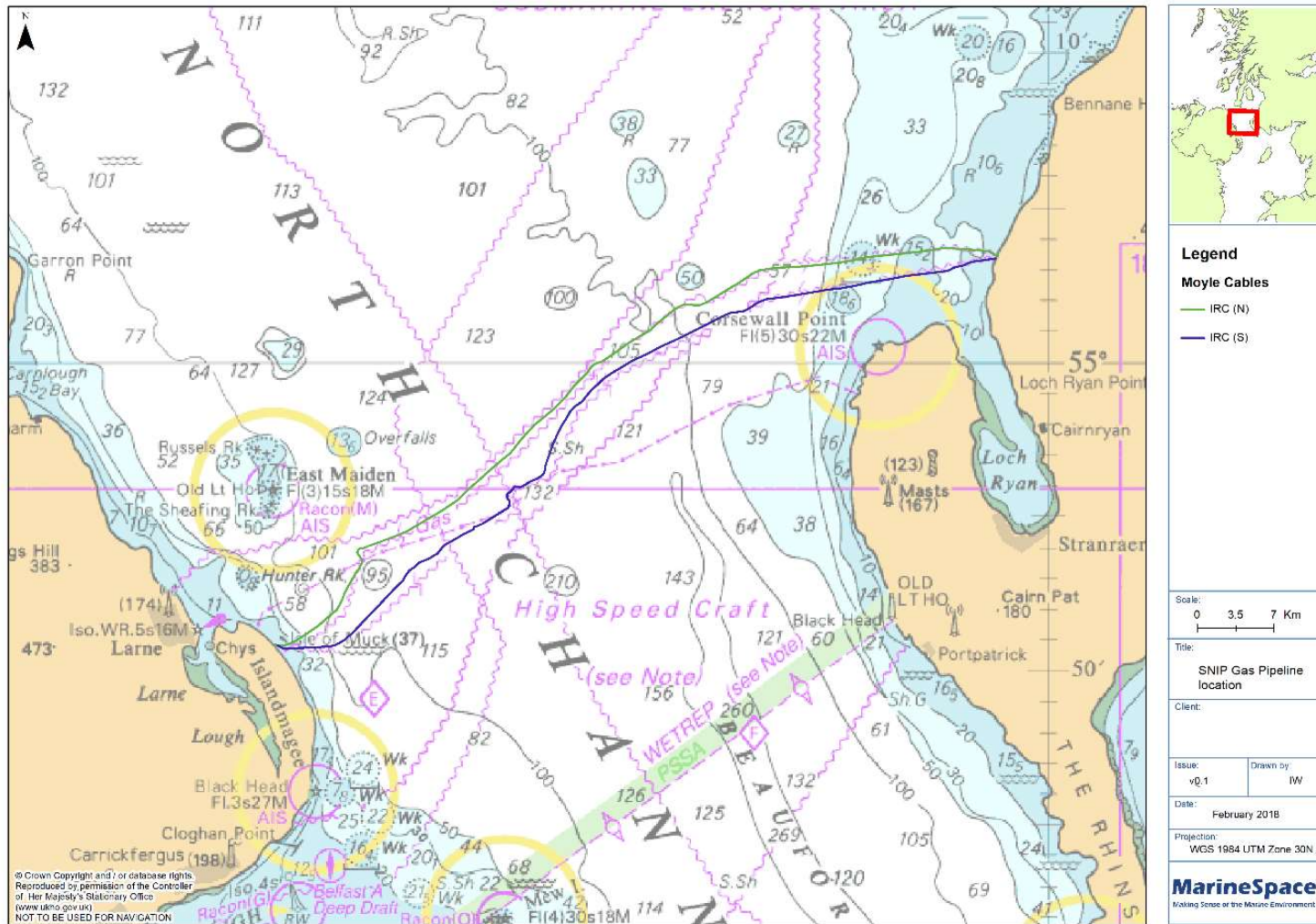




Figure 3 Location of the (a) Belfast Lough Crossing (BLC) and (b) Larne Lough Crossing (LLC)

