

Notice to Mariners

Date: July 2018

Issue No: 001

Notice to Mariners

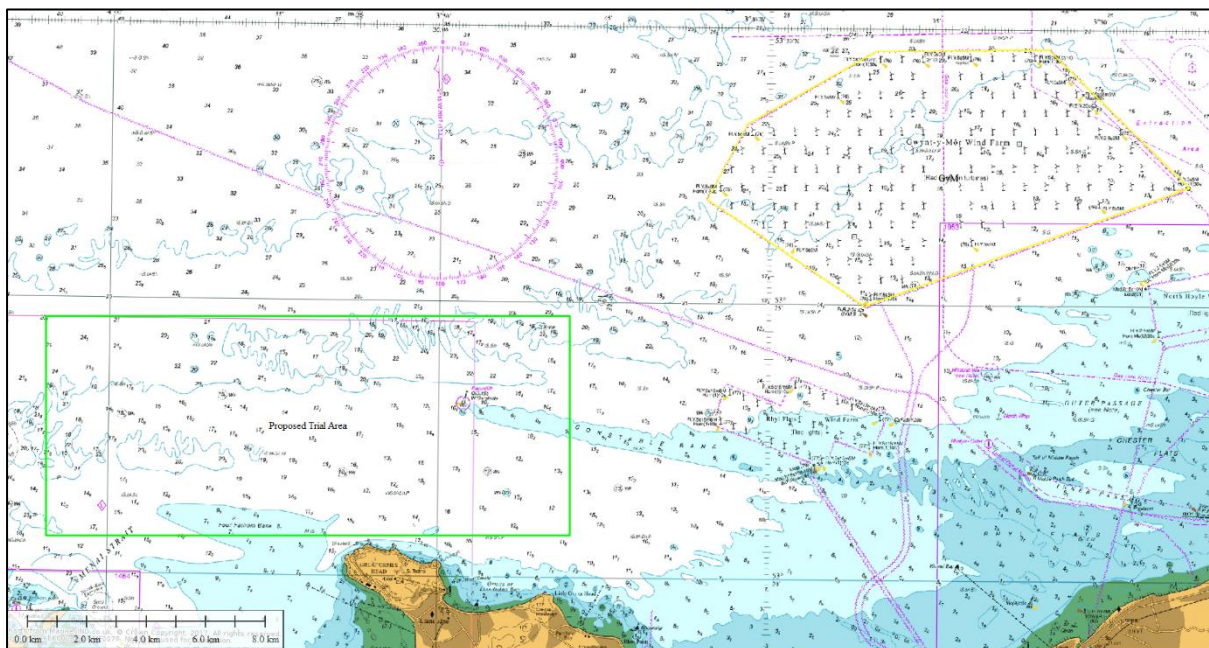
Hydrographic Survey Operations

Please be advised that Bibby HydroMap Limited will be carrying out hydrographic survey operations in vicinity of the Great Orme and within the Gwynt y Mor Offshore Windfarm.

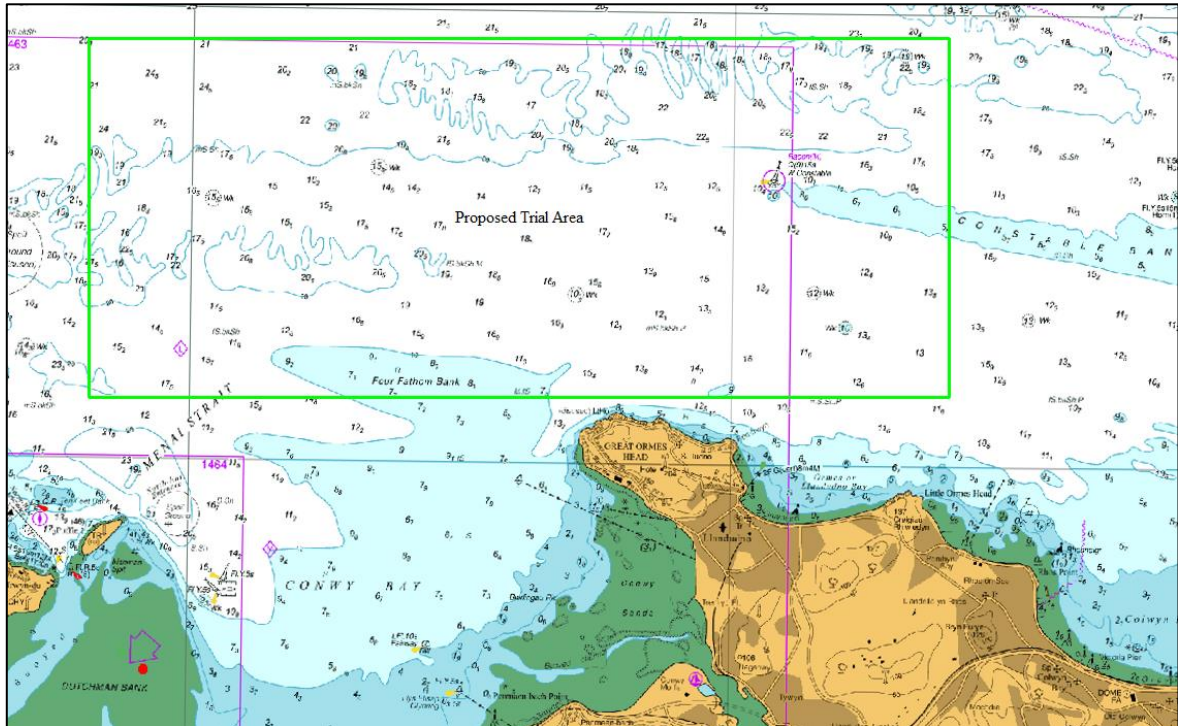
Survey Operations are anticipated to commence on 30th July, weather permitting. The expected duration is 5 days. Survey operations will be undertaken using survey vessel MV Proteus, Cougar and DriX. The vessels will be operating for Conwy Quay Marina/

- MV Proteus is being utilised as the 'Mother Craft', with the operators of DriX on-board. All communication about these operations should be directed at MV Proteus.
- Cougar is being utilised as a guard vessel / Safety boat during the operations.
- DriX is an Unmanned Surface Vessel but will under supervision at all times from the other two vessels.

Overview of Area



Overview Chart



Potential Trial Area (In Vicinity of the Great Orme)

Latitude (WGS84)	Longitude (WGS84)
53° 24.629' N	4° 1.947' W
53° 24.748' N	3° 46.056' W
53° 20.773' N	3° 45.985' W
53° 20.654' N	4° 1.851' W

CONTACT & VESSEL DETAILS

Onshore Contact Details	
Project Manager	Tom Davenport - Tom.davenport@bibbyhydromap.com
Company Details	Bibby Hydromap Limited 4 Brunel Road, Croft Business Park Bromborough, Wirral, CH62 3NY T: 0151 328 1120

MV Proteus Details



MV Proteus is a 14m x 5m GRP catamaran hull design coastal survey vessel. The lower sections of the hull and dark blue and the upper sections and wheelhouse are white, with 'SURVEY' lettering in white on both sides of the vessels hull. The vessel will operate on a 12hr basis and will display appropriate day shapes & lights during survey operations. The vessel actively transmit an AIS signal.

A wide berth is requested at all times of all vessel as they will be restricted in their abilities to manoeuvre. Survey speed will generally be around 4 knots.

Contact Details	
MV Proteus, Call Sign	2HBL7
MMSI	235052874
VHF	Listening 16 & 12

Cougar Details**Contact Details**

Cougar, Call Sign	MQKB2
MMSI	235102268
VHF	Listening 16 & 12

DriX

DriX is 8m Composite Unmanned Surface vessel (USV). The hull is a dark orange and with a tall Dark orange mast, 2m high.

A wide berth is requested at all times of all vessel as they will be restricted in their abilities to manoeuvre.