

NOTICE TO MARINERS

Issue Date: 25th June, 2018

Western Link Project

Cable installed in Liverpool Bay – Urgent operations

Mariners are advised that urgent operations as indicated within the previous NtM of the 14th of May 2018 are still on going in an inshore section off the Western Link power cables installed during the Shallow Water Campaign in Liverpool Bay as detailed in Table1.

Vessels involved in the operations at the location identified in Table 1, are DP Shallow Water Vessel “ATLANTIS” (Call Sign ORKN), the “WAVE WALKER” Jack up barge (Call Sign PBVH), the “STEMAT 82” Multipurpose barge (Call Sign PBRF) and the “WIND” jack up barge (Call Sign OXSW2),

Vessels are requested to pass at a safe speed and distance and fishing vessels are advised to remain a safe distance (approximately 1.5 nautical miles) from the areas identified in Table 1.



DP Shallow Water Vessel “ATLANTIS”



Jack up barge "WAVE WALKER"



Multipurpose barge "STEMAT 82"



Jack up barge "WIND"

Pole 1 & Pole 2						
	RKP	KP	Easting	Northing	LAT	LONG
From	1.600	385.540	491157.55	5919664.80	53° 25.557' N	3° 7.984' W
To	1.800	385.740	491139.28	5919863.96	53° 25.665' N	3° 8.001' W

Table 1 – Section affected by the operations

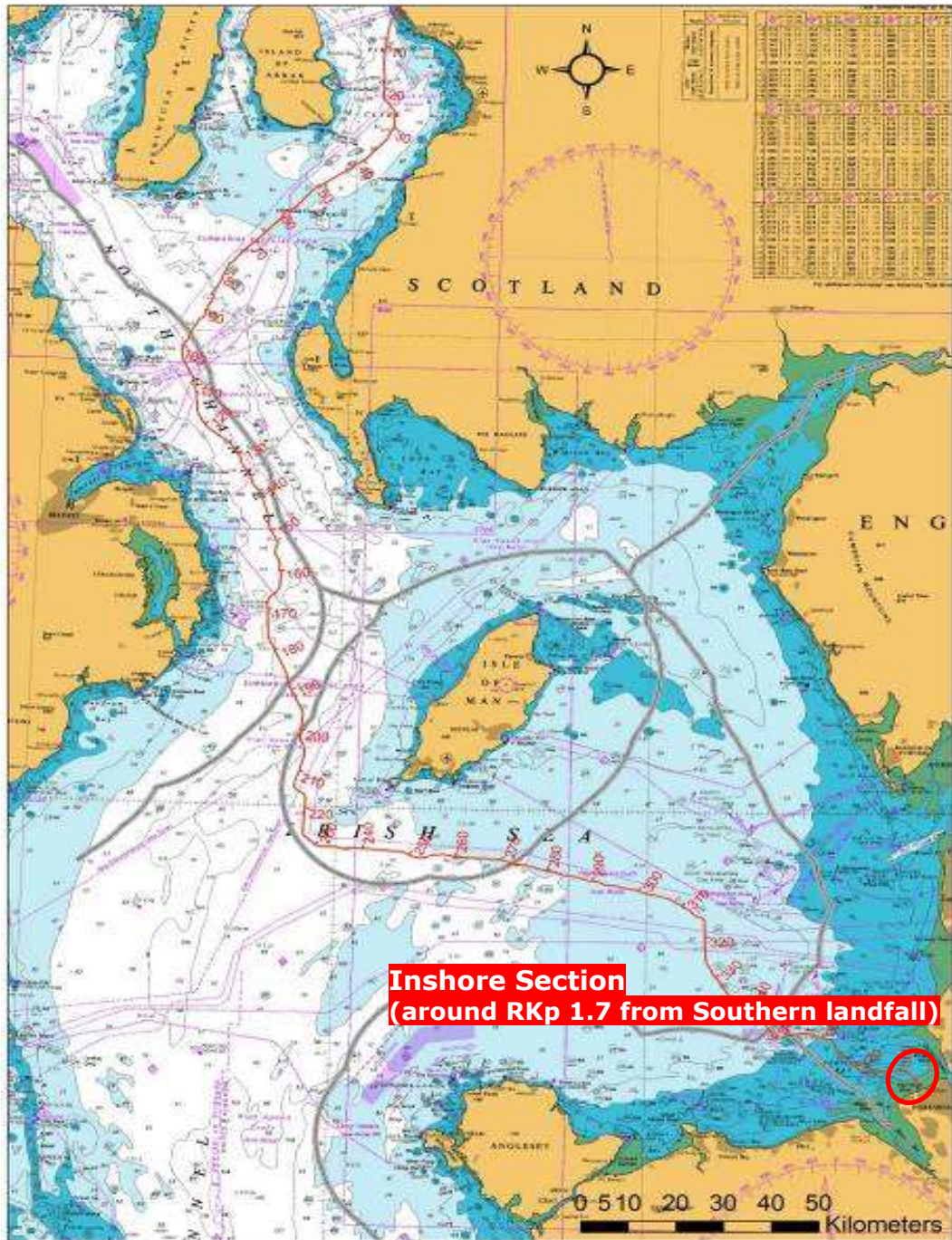


Figure 1 - Western Link cable route – Inshore shallow water installation campaign section

Contact Details:

Further enquiries should be addressed to the following contacts:

AWJ Marine

Jim Andrews

(who will also coordinate the Fisheries liaison for this operation)

jim@awjmarine.co.uk

Office: +44 (0) 845-880-2540,

Mobile: +44 (0) 7908-225865,

Prysmian Project Manager

Alberto Pirovano

alberto.pirovano@prysmiangroup.com

Office: +39 02 6449 33590

Mobile: +39 335 5962819