

NOTICE TO MARINERS

Issue Date: 3rd August, 2017

Western Link Project

Cable installation – Additional Works

Mariners are advised that additional works are required in the section of the Western HVDC Link cable route that is detailed in **Table 1** of this notice.

This work will require the presence of the Cable Laying vessel **Giulio Verne** (IMO 8302014; Call Sign IBPU), Post Lay Installation Burial (PLIB) support vessel **Normand Pacific** (IMO 9491977; Call Sign LAXI7), and the support vessel **Normand Flower** (IMO 9249489; Call Sign LAXN7).

The additional works require sections of spare cables to be surface laid, the locations of these sections of cables are detailed within **table 2** below.

Vessels are requested to pass at a safe speed and distance and fishing vessels are advised to remain at safe distance (approximately 1.5 nautical miles) from the areas identified. Guard Vessels have been deployed at each location to aid in monitoring the exposed areas and will advise of safe distances locally.

The vessels will monitor VHF Channel 16 at all times.

Table 1 – Details the area of the **Additional works** South of the Isle of Man.

Works Area					
	KP	Easting	Northing	LAT	LONG
From	268.450	401721.29	5972846.39	53°53.684' N	4°29.735' W
To	269.450	402719.53	5972896.61	53°53.722' N	4°28.825' W

Table 2 – Details the area of the **Surface laid cable** West of the Isle of Man.

Works Area					
	KP	Easting	Northing	LAT	LONG
From	240.103	374085.95	5975518.19	53°54.766' N	4°55.020' W
To	238.195	372187.99	5975682.84	53°54.827' N	4°56.757' W
From	278.311	411201.53	5970661.47	53°52.609' N	4°21.044' W
To	276.158	409183.27	5971371.5	53°52.971' N	4°22.898' W

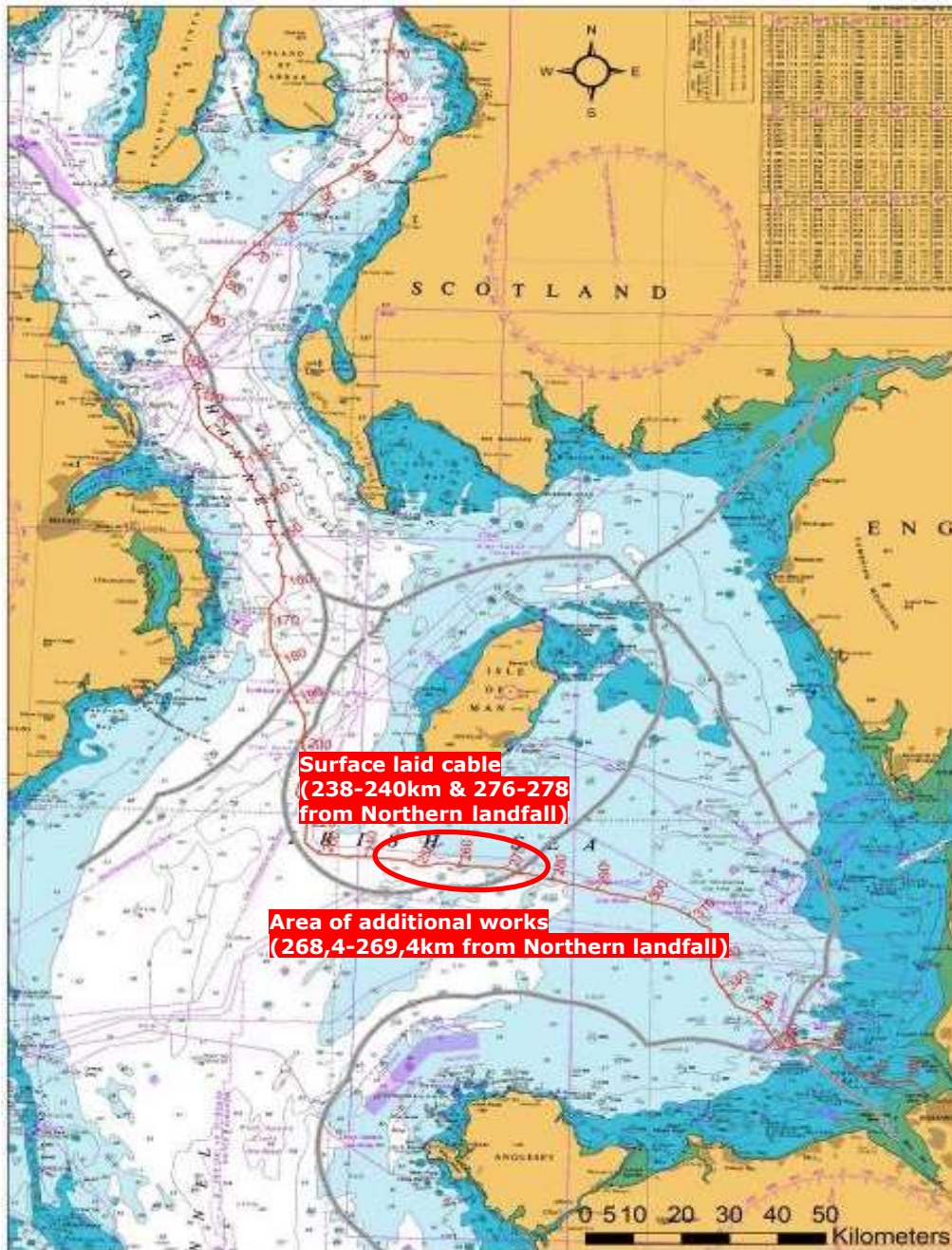


Figure 1 - Western Link cable route – Additional works & surface laid cable

Contact Details:

Further enquiries should be addressed to the following contacts:

AWJ Marine	Jim Andrews <i>(who will also coordinate the Fisheries liaison for this operation)</i> jim@awjmarine.co.uk Office: +44 (0) 845-880-2540, Mobile: +44 (0) 7908-225865,
Prysmian Project Manager	Alberto Pirovano alberto.pirovano@prysmiangroup.com Office: +39 02 6449 33590 Mobile: +39 335 5962819
Master of Giulio Verne	master@gverne.it VSAT: +39 0553 921155 Mobile: +39 335 5261462 SAT: 00870 773240838
Master of Normand Pacific	pacific.bridge@pacific.solstad.no VSAT: +47 52 85 60 70 SAT: +870 765 064 841
Master of Normand Flower	flower.bridge@flower.solstad.no VSAT: +47 52 85 60 20