

NOTICE TO MARINERS

Issue Date: 20th July, 2017

Western Link Project

Post lay mattresses operation in the Irish Sea

Mariners are advised that post lay mattresses works are planned for the Western Link HVDC cable following the burial works of Deep water Campaign 5b (C5b). These mattresses are requirement as a means of protection over the existing crossing with cables at one locations along the C5b Western Link Project route (see Figure 2 and Table 1) where the Western Link HVDC cable is currently exposed and monitored by Guard Vessels. The installation of the mattresses is expected to start around the 26th of July 2017 working from the northern sections progressing south along the Western Link HVDC route with completion expected by the end of July 2017.

The mattress installation works will be carried out by **Assodivers Ltd** using **MPSV Argo I** (IMO 7432109; Call Sign SVAH9) multi-purpose vessel.

Vessels are requested to pass at a safe speed and distance and fishing vessels are advised to remain a safe distance (approximately 1.5 nautical miles) from the areas identified in Table 1. Guard Vessels have been deployed at each location to aid in monitoring the exposed areas and will advise of safe distances locally.

The vessel will monitor VHF Channel 16 at all times.



MPSV Argo I

Pre-installation survey

A survey will be performed at the crossing location prior to the undertaking of any mattress installation activities to confirm the positions of the Western Link HVDC cable and the crossing location.

Mattresses Installation

Following positive location of the crossing, the MPSV Argo I will deploy the mattresses of an over-trawlable design installed as a single layer, using a frame. This process will be repeated to construct the crossing specification.

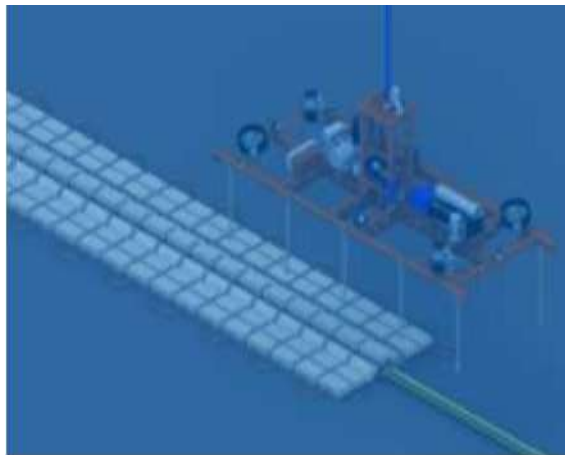


Figure 1 – Mattress installation arrangement

Post-installation survey

Following the installation of the mattresses a post-installation survey will be carried out to confirm the mattresses have been positioned as set out in the design.

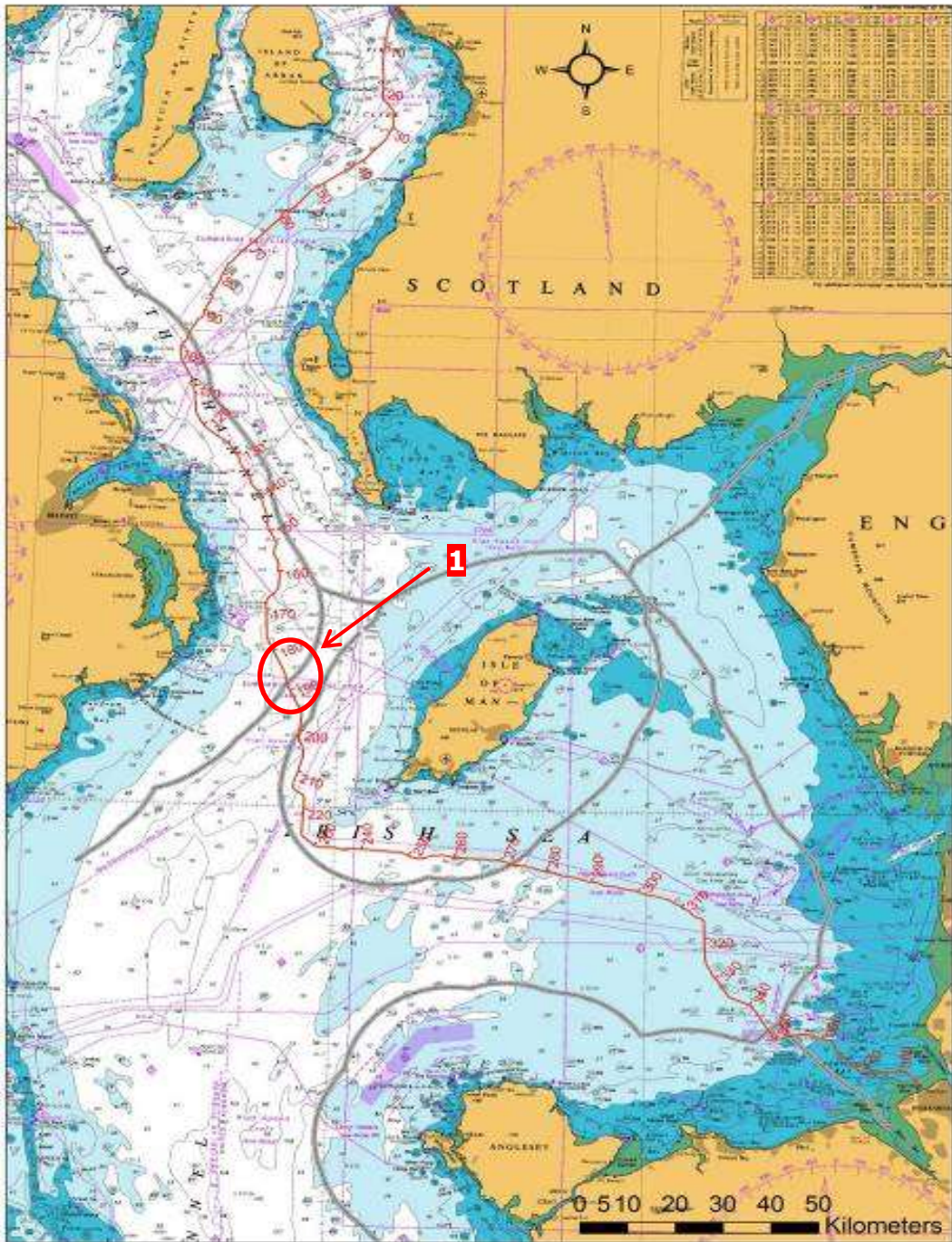


Figure 2 Western Link HVDC cable route and post-installed mattress location

Table 1 – Post-installed mattress locations

| # | ID (Position Name / Event) | WGS84 - UTM 30 N | | WGS84 | | Water Depth referred to LAT (m) | Geodetic | | | |
|---|-----------------------------------|------------------|------------|--------------|---------------|---------------------------------------|-----------------------------|--------------------------|-------------------------|------------------|
| | | Easting | Northing | Latitude | Longitude | | Partial Distance (km) | KP (km) from Ardsneil | RKP (km) from Wirral | Bearing (deg) |
| 1 | Manx Northern Ireland Cable IS | 358469.86 | 6015927.22 | 54° 16.300'N | 005° 10.408'W | 115 | 0.791 | 186.936 | 200.405 | 173.7 |

Contact Details:

Further enquiries should be addressed to the following contacts:

AWJ Marine

Jim Andrews
(who will also coordinate the Fisheries liaison for this operation)
jim@awjmarine.co.uk
Office: +44 (0) 845-880-2540,
Mobile: +44 (0) 7908-225865,

Prysmian Project Manager

Alberto Pirovano
alberto.pirovano@prysmiangroup.com
Office: +39 02 6449 33590
Mobile: +39 335 5962819

MPSV Argo Master

argo@assodivers.gr
Fleet: +870 7649 45428-9
Mobile: +30 6944 621907