

NOTICE TO MARINERS

Issue Date: 27th July, 2016

Western Link Project

Rock Placement Works

North Channel & Irish Sea

This notice provides an update on work that is due to be carried out to protect exposed areas of cable on the section of the route in the North Channel & the Irish Sea. The locations of these works are shown in tables 1 & 2 of this Notice to Mariners.

Protection work is due to be carried out in August 2017 and completed in the second half of the month. A description of the nature of the works and the vessels involved is set out below.

The Rock Placement work is being carried out by **Van Oord** using **Nordnes** (IMO 9229910; Call Sign PHOG) Rock Placement vessel.

Vessels are requested to pass at a safe speed and distance and fishing vessels are advised to remain a safe distance (approximately 1.5 nautical miles) from the areas identified. Guard Vessels have been deployed at each location to aid in monitoring the exposed areas and advise of safe distances locally.

The vessels will monitor VHF Channel 16 at all times.



Rock Placement vessel - Nordnes

Description of Rock Placement works

Along the Western Link HVDC cable route, exposed sections of campaign 3 and 6 previously communicated through notice to mariners, will be now post protected them by rock placement.

Guard vessels which have previously been stationed to monitor the cable and provide advice to mariners following the cable laying, will remain in position until all of the post protection has been completed.

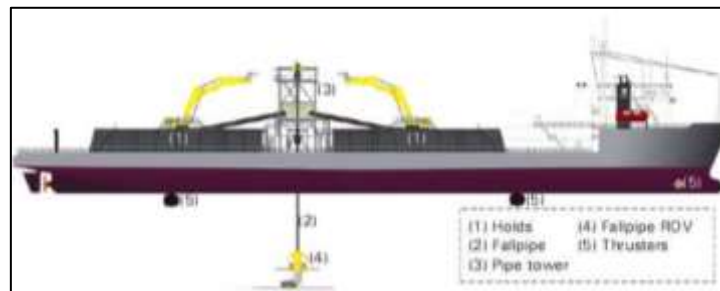


Figure 1 – Rock Placement arrangement

North Channel: Campaign 3 & 6

The cable lay and post lay burial previously communicated through a notice to mariners has been completed. Table 1 below indicates where there are some exposed areas that are associated with hard seabed conditions where burial has not been achieved and will require rock placement.

Table 1 – Rock Placement Locations for Campaign 3 & Campaign 6 cable lengths in the North Channel.

	C3 - Pole 1					C6 - Pole 2				
	KP	Easting	Northing	LAT	LONG	KP	Easting	Northing	LAT	LONG
From	158392	356934,71	6042650,5	54°30.674N	5°12.594W	160118	356994,08	6041280,39	54°29.936N	5°12.499W
To	158501	356935,32	6042541,56	54°30.615N	5°12.593W	160130	356995,83	6041268,52	54°29.930N	5°12.497W
From	158563	356935,67	6042479,59	54°30.582N	5°12.588W	162837	357147,50	6038586,31	54°28.487N	5°12.279W
To	158923	356889,29	6042123,87	54°30.389N	5°12.620W	162851	357146,31	6038572,36	54°28.480N	5°12.279W
From	165332	356224,27	6035986,06	54°27.071N	5°13.057W	163296	357108,64	6038129,08	54°28.240N	5°12.301W
To	165406	356181,73	6035925,62	54°27.037N	5°13.095W	163312	357107,29	6038113,15	54°28.232N	5°12.302W
From	165744	355965,46	6035666,84	54°26.894N	5°13.287W	166123	355977,30	6035638,42	54°26.879N	5°13.275W
To	165921	355821,28	6035563,88	54°26.836N	5°13.417W	166306	355825,45	6035544,57	54°26.826N	5°13.413W
From	172750	354447,86	6029284,59	54°23.429N	5°14.502W					
To	172934	354445,03	6029101,01	54°23.330N	5°14.499W					
From	176156	354437,18	6025880,85	54°21.595N	5°14.412W					
To	176158	354416,40	6025878,97	54°21.594N	5°14.431W					

Irish Sea: Campaign 5 a& b

The surface laying of the cable on the seabed and the post lay installation burial works have been completed in this area (between Kps 173.5 and 235.3 from Ardneil) for 5a with a few sections associated with hard seabed conditions where burial has not yet been achieved. The installation of the parallel campaign 5b is currently being progressed and once completed both 5 a & b will be released. Table 2 below indicates where there are some exposed areas that are associated with hard seabed conditions where burial has not been achieved on C5a and will require rock placement. Similar results are expected on C5b which runs parallel but this will be confirmed once the post lay burial works have been completed.

Table 2 – Rock Placement Locations for Campaign 5 a&b cable lengths in the Irish Sea.

Pole 1 & Pole 2					
	KP	Easting	Northing	LAT	LONG
From	215286	360892,83	5989201,42	54°1.937N	5°7.438W
To	215444	361016,71	5989103,25	54°1.886N	5°7.322W
From	203416	361724,54	6000296,93	54°7.930N	5°6.980W
To	203577	361786,21	6000148,2	54°7.851N	5°6.920W
From	208078	361599,19	5995775,55	54°5.492N	5°6.971W
To	208106	361590,42	5995748,97	54°5.477N	5°6.979W
From	211132	360684,93	5992869,95	54°3.911N	5°7.729W
To	213041	360082,55	5991060,21	54°2.926N	5°8.231W

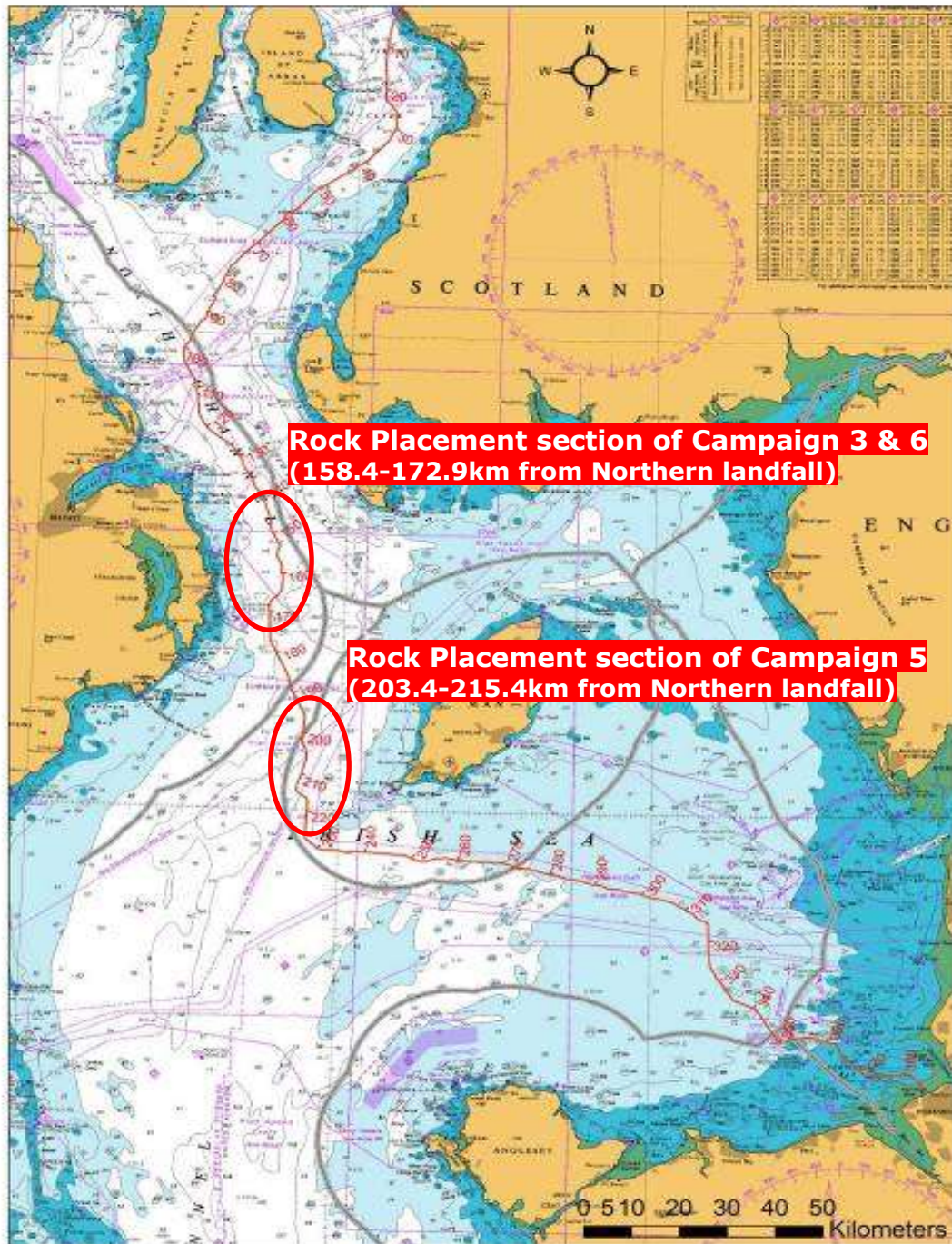


Figure 2 – Western Link cable route - Deep Water installation sections & rock placement sections

Contact Details:

Further enquiries should be addressed to the following contacts:

AWJ Marine	Jim Andrews <i>(who will also coordinate the Fisheries liaison for this operation)</i> jim@awjmarine.co.uk Office: +44 (0) 845-880-2540, Mobile: +44 (0) 7908-225865,
Prysmian Project Manager	Alberto Pirovano alberto.pirovano@prysmiangroup.com Office: +39 02 6449 33590 Mobile: +39 335 5962819
Master of Nordnes	0615.cpt@vanoord.com Tel: +31 888 26 3830 Sat: +47 917 22 508