

# NOTICE TO MARINERS

**Issue Date: 10<sup>th</sup> May, 2017**

**Western Link Project**

## **Cable installation – Exposed cable sections**

Mariners are advised that following the completion of Campaign 3, 4a, 4b, 5a and 6, there are sections of exposed cable along the Western HVDC Link cable route as detailed in **Table 1, Table 2 and Table 3.**

This notice provides an updated list of the sections of exposed cable including the planned cable crossing locations previously communicated through notices to mariners. These sections are currently being monitored by Guard Vessels which have been deployed locally.

Note these sections mostly represent planned cable crossings, areas of exposed cable that will be joined and buried, in addition to some small exposures associated with hard soils areas that are under review to reduce the requirement for protection by rocks on the cable route.

Details of the vessels that will be used to carry out this protection work and the nature of this work will be provided in a separate notice to mariners.

**Vessels are requested to pass at a safe speed and distance and fishing vessels are advised to remain a safe distance (approximately 1.5 nautical miles) from the areas identified in Table 1, 2 & 3. Guard Vessels have been deployed at each location to aid in monitoring the exposed areas and will advise of safe distances locally.**

### **Firth of Clyde: Campaign 4 a & b**

The cable lay and post lay burial previously communicated through a notice to mariners has been completed. Table 1 below indicates the remaining sections requiring remedial burial works and post lay matting. Of these remaining sections a jetting tool will be used to attempt to bury the inshore section and the cable Bights, the three (3) crossings will be protected using concrete mattresses.

**Table 1 – Exposed sections & Guard Vessel Locations for Campaign 4 a & b cable in the Clyde**

KP		Coordinates			
		Easting	Northing	Latitude	Longitude
From	3,010	381004,04	6171096,51	55°40.265N	4°53.524W
To	3,061	380971,42	6171055,71	55°40.243N	4°53.554W
From	22,556	379081,45	6152082,86	55°29.992N	4°54.857W
To	22,726	379181,11	6151961,90	55°29.928N	4°54.759W
From	24,810	380411,20	6150304,42	55°29.053N	4°53.548W
To	24,977	380519,46	6150192,86	55°28.995N	4°53.443W
From	55,935	361959,48	6128318,92	55°16.917N	5°10.404W
To	55,944	361952,64	6128313,04	55°16.913N	5°10.410W
From	59,564	359106,83	6126122,53	55° 15.685N	5° 13.030W
To	60,900	358056,9	6125394,0	55° 15.274N	5°13.999W

### **North Channel: Campaign 3 & 6**

The cable lay and post lay burial previously communicated through a notice to mariners has been completed. Table 2 below indicates where there are some small exposed areas that are associated with hard seabed conditions where burial has not yet been achieved. The requirements for cable protection in this area are under review to minimise rock placement.

**Table 2 – Exposed sections & Guard Vessel Locations for Campaign 3 & Campaign 6 cable lengths in the North Channel.**

KP		Coordinates			
		Easting	Northing	Latitude	Longitude
From	69,600	352221,11	6118990,3	55° 11.722N	5° 19.302W
To	70,000	351926,93	6118719,5	55° 11.570N	5° 19.570W
From*	158,100	356928,11	6042941,64	54° 30.830N	5° 12.608W
To*	168,500	354417,29	6033524,12	54° 25.713N	5° 14.655W
From	172,500	354466,5	6028535,71	54° 23.026N	5° 14.463W
To	173,200	354451,4	6028835,19	54° 23.187N	5° 14.486W
From	175,500	354549,21	6025537,28	54° 21.412N	5° 14.299W
To	176,200	354541,01	6025837,18	54° 21.573N	5° 14.315W

*\* There are some small areas of exposure in this section that are associated with hard seabed conditions where burial has not yet been achieved. The requirements for cable protection in this area are under review to minimise rock placement.*

**Irish Sea: Campaign 5a**

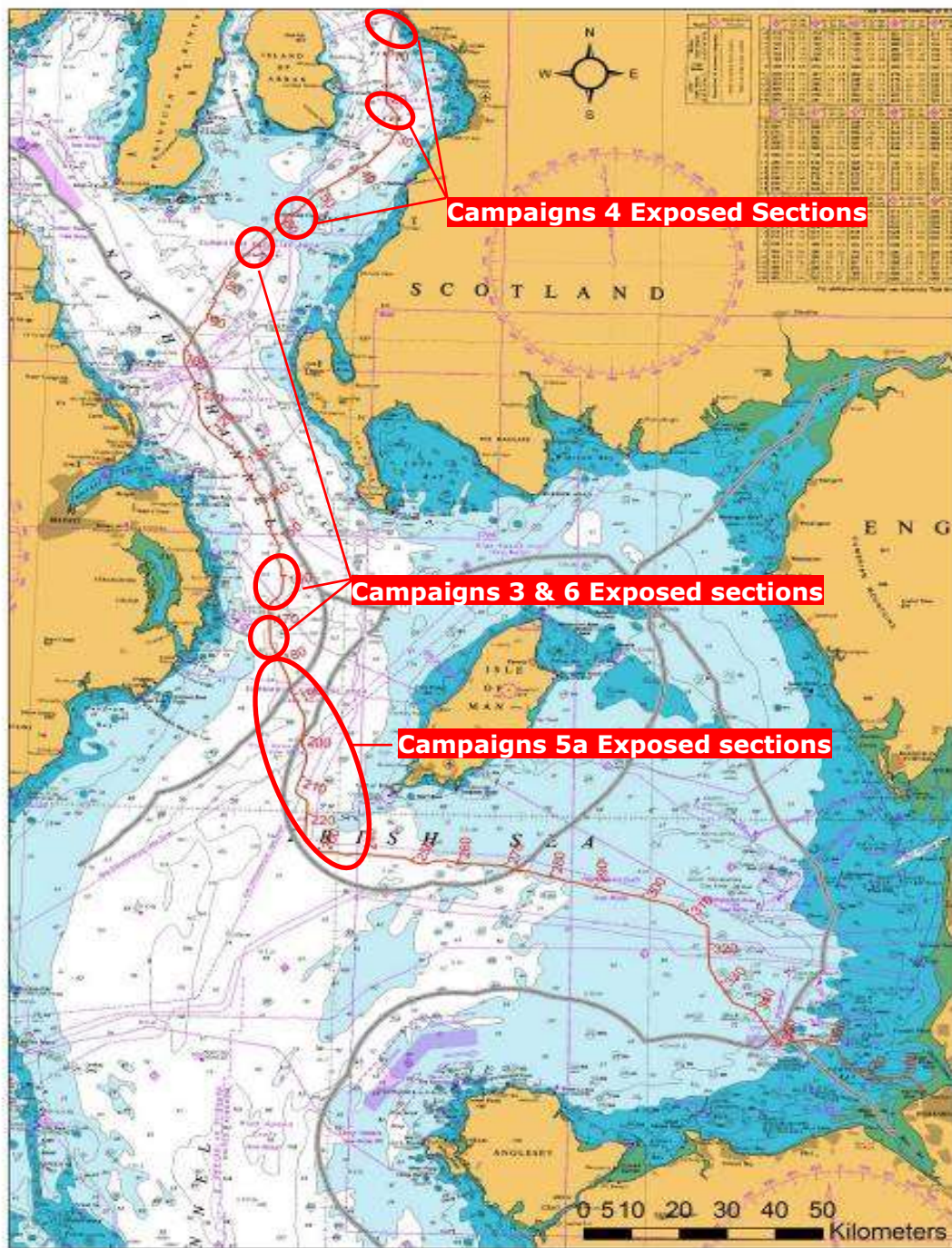
The surface laying of the cable on the seabed has been completed and the post lay installation burial works are under way in this area (between KPs 173.5 and 235.3 from Ardneil). Installation details are shown in Table 3 overleaf.

**Table 3 – Campaign 5a** installation section route

ID (Position Name / Event)	WGS84 - UTM 30 N		WGS84		Water Depth referred to LAT (m)	Geodetic				Turning Angle (deg)
	Easting	Northing	Latitude	Longitude		Partial Distance (km)	KP (km) from Ardneil	RKP (km) from Wirral	Bearing (deg)	
AC_292	354483	6028508	54° 23.011'N	005° 14.447'W	112	0,488	173,505	213,655	175,3	1,3
AC_293	354567	6025426	54° 21.352'N	005° 14.279'W	110	3,083	176,588	210,572	176,6	19,8
AC_294	354867	6024659	54° 20.944'N	005° 13.980'W	105	0,823	177,411	209,749	156,9	1,6
AC_295	355951	6022094	54° 19.580'N	005° 12.906'W	97	2,786	180,197	206,963	155,3	9,9
AC_296	356208	6021696	54° 19.370'N	005° 12.658'W	114	0,474	180,671	206,490	145,4	8,8
AC_297	358422	6016720	54° 16.726'N	005° 10.475'W	117	5,447	186,118	201,043	154,2	19,5
Manx- Northern_Ireland_Cable_IS	358485	6015925	54° 16.299'N	005° 10.394'W	115	0,797	186,915	200,246	173,7	0,0
AC_298	358583	6014691	54° 15.635'N	005° 10.269'W	113	1,239	188,154	199,007	173,7	20,4
Northern_Ireland/International waters	358689	6014463	54° 15.514'N	005° 10.165'W	113	0,251	188,405	198,755	153,3	0,0
AC_299	361798	6007772	54° 11.960'N	005° 07.119'W	125	7,379	195,784	191,377	153,3	16,1
AC_300	361874	6007280	54° 11.696'N	005° 07.035'W	127	0,498	196,282	190,879	169,4	15,4
International/Isle of Man waters	361403	6003215	54° 09.498'N	005° 07.356'W	126	4,093	200,375	186,786	184,9	0,0
AC_301	361242	6001826	54° 08.747'N	005° 07.465'W	123	1,399	201,773	185,387	184,9	13,7
AC_302	361296	6001391	54° 08.513'N	005° 07.404'W	121	0,439	202,212	184,949	171,2	15,2

Interconnector_2_Pipeline_IS	361767	6000238	54° 07.899'N	005° 06.940'W	114	1,245	203,457	183,703	156,1	0,0
AC_303	361980	5999716	54° 07.621'N	005° 06.730'W	111	0,564	204,022	183,139	156,1	10,6
AC_304	362080	5999231	54° 07.361'N	005° 06.625'W	108	0,495	204,517	182,644	166,7	10,4
Ballyhornan-Port Erin_No3_Coax_Cable_OOS	362097	5998454	54° 06.943'N	005° 06.588'W	104	0,777	205,294	181,867	177,1	0,0
AC_305	362121	5997310	54° 06.327'N	005° 06.535'W	98	1,145	206,439	180,722	177,1	19,5
AC_306	361291	5994795	54° 04.958'N	005° 07.226'W	93	2,648	209,088	178,073	196,6	8,3
AC_307	361183	5994181	54° 04.625'N	005° 07.308'W	93	0,624	209,711	177,449	188,2	11,0
AC_308	360869	5993362	54° 04.179'N	005° 07.574'W	92	0,877	210,589	176,572	199,3	2,1
AC_309	360108	5991137	54° 02.968'N	005° 08.210'W	72	2,351	212,940	174,220	197,2	11,4
AC_310	360001	5990326	54° 02.529'N	005° 08.286'W	74	0,819	213,759	173,402	185,8	20,0
AC_311	360073	5989997	54° 02.353'N	005° 08.210'W	73	0,337	214,096	173,065	165,8	19,1
AC_312	360225	5989750	54° 02.222'N	005° 08.064'W	71	0,289	214,385	172,776	146,7	20,0
Interconnector_1_Pipeline_IS	360962	5989166	54° 01.919'N	005° 07.373'W	70	0,941	215,326	171,834	126,7	0,0
AC_313	362082	5988278	54° 01.459'N	005° 06.324'W	69	1,429	216,755	170,405	126,7	20,0
AC_314	362266	5987978	54° 01.300'N	005° 06.147'W	68	0,352	217,107	170,053	146,7	15,2
AC_315	362346	5987707	54° 01.155'N	005° 06.067'W	68	0,283	217,390	169,771	161,9	20,0
AC_316	361807	5979165	53° 56.543'N	005° 06.328'W	64	8,560	225,950	161,211	181,9	20,0
AC_317	361897	5978858	53° 56.379'N	005° 06.237'W	64	0,321	226,271	160,890	162,0	12,0
AC_318	362049	5978575	53° 56.229'N	005° 06.090'W	64	0,321	226,592	160,569	150,0	19,9
AC_319	364565	5976326	53° 55.057'N	005° 03.733'W	69	3,375	229,967	157,194	130,1	18,5
AC_320	365034	5976125	53° 54.956'N	005° 03.299'W	70	0,511	230,477	156,683	111,6	18,5
AC_321	366140	5976034	53° 54.924'N	005° 02.287'W	57	1,110	231,587	155,574	93,0	3,1

AC_322	366767	5976017	53° 54.925'N	005° 01.714'W	60	0,627	232,214	154,946	90,0	6,3
AC_323	367185	5975958	53° 54.900'N	005° 01.332'W	62	0,422	232,636	154,525	96,3	8,9
AC_324	367466	5975963	53° 54.906'N	005° 01.075'W	62	0,282	232,917	154,243	87,4	3,2
AC_325	367817	5975988	53° 54.925'N	005° 00.755'W	66	0,352	233,269	153,892	84,3	5,6
AC_326	368688	5975965	53° 54.926'N	004° 59.959'W	68	0,872	234,141	153,020	89,9	19,8
AC_327	369780	5975539	53° 54.713'N	004° 58.952'W	66	1,172	235,313	151,847	109,7	15,1



**Figure 1 – Western Link cable route – Campaigns 4, 3 & 6 and 5a exposed sections**

**Contact Details:**

Further enquiries should be addressed to the following contacts:

AWJ Marine

Jim Andrews  
*(who will also coordinate the Fisheries liaison for this operation)*  
[jim@awjmarine.co.uk](mailto:jim@awjmarine.co.uk)  
Office: +44 (0) 845-880-2540,  
Mobile: +44 (0) 7908-225865,

Prysmian Project Manager

Alberto Pirovano  
[alberto.pirovano@prysmiangroup.com](mailto:alberto.pirovano@prysmiangroup.com)  
Office: +39 02 6449 33590  
Mobile: +39 335 5962819