

NOTICE TO MARINERS

Issue Date: 29th March, 2017

Western Link Project

Deep water cable Installation Campaign 4b & 5a

This notice provides an update on work that is planned for **Campaign 4b** and **Campaign 5a** using the Giulio Verne & Normand Pacific

The **Campaign 4b** Pole 2 Western Link HVDC cable will be surface laid on the seabed by using the Cable Laying vessel **Giulio Verne** (IMO 8302014; Call Sign IBPU) from Ardneil shore end at KP (Kilometer Post) 5 to KP 58 following on from the previous section laid in shallow water. The Giulio Verne is expected to be on site on the 31st March 2017 to commence jointing operations at KP5, from there it will progress offshore laying the Campaign 4b cable as detailed in **Table 1** of this notice. The Giulio Verne will then complete the jointing operation from Campaign 4b to Campaign 6 and the jointing operations of Campaign 4a to Campaign 3.

The **Campaign 4b** cable will be then post protected by Post Lay Installation Burial (PLIB) works using **Normand Pacific** (IMO 9491977; Call Sign LAXI7) which is expected to be on site in April.

Following campaign 4 works the **Giulio Verne** will proceed to KP233 and commence the installation of **Campaign 5a** Pole 1 cable from KP233 to KP176. The Giulio Verne will complete the jointing operation at KP233 from Campaign 2 to Campaign 5a laying the cable from south to north and then complete the campaign by joining the end of the Campaign 5a cable with the Campaign 3 cable at KP176. This section will also be post lay buried using the **Normand Pacific** once she has completed the works of Campaign 4b. See **table 2** for details of Campaign 5a.

Vessels are requested to pass at a safe speed and distance and fishing vessels are advised to remain a safe distance (approximately 1.5 nautical miles) from the areas identified. Guard Vessels have been deployed at each location to aid in monitoring the exposed areas and will advise of safe distances locally.

The vessels will monitor VHF Channel 16 at all times.



Figure 1 Cable Laying vessel - Giulio Verne



Figure 2 PLIB Support vessel - Normand Pacific

Post Lay Installation Burial (PLIB)

The post protection methods for this section of the route is post lay burial using a jetting tool. The PLIB operations with the use of a subsea burial tool as indicated in Figure 3, will have restricted maneuverability as it completes its work scope.

Guard vessels which have previously been stationed to monitor the cable and provide advice to mariners following the cable laying will remain in position until the all of the post protection has been completed. In areas of service crossings the guard vessels will remain on location until the completion of matting or rock placement works.

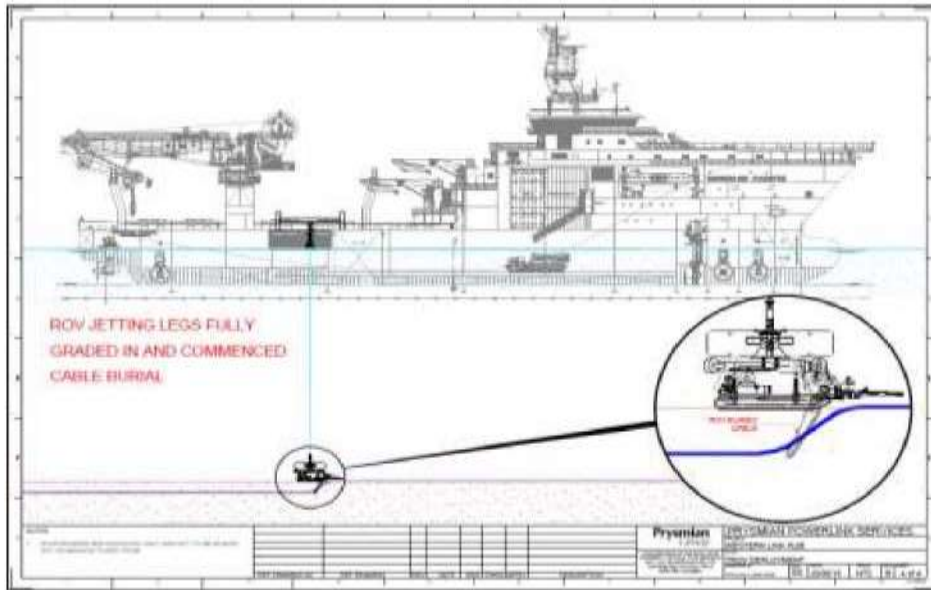


Figure 3 – PLIB general arrangement

PLIB Works Overview

The locations of the exposed sections of Campaign 4 that will be protected by PLIB are shown in Table 1 of this Notice.

Table 1 – Campaign 4 installation section route

ID (Position Name / Event)	WGS84 - UTM 30 N		WGS84		Water Depth referred to LAT (m)	Geodetic				Turning Angle (deg)
	Easting	Northing	Latitude	Longitude		Partial Distance (km)	KP (km) from Ardneil	RKP (km) from Wirral	Bearing (deg)	
JB_ARDNEIL	381725	6173953	55° 41.815'N	004° 52.910'W	-	-	0.000	387.161	-	-
HDD_SEA_END	381465	6173437	55° 41.533'N	004° 53.145'W	1	0.579	0.579	386.582	205.2	7.5
AC_1	381280	6172908	55° 41.246'N	004° 53.307'W	10	0.560	1.139	386.022	197.7	15.0
10m	381277	6172867	55°41.224'N	004°53.309'W	10	0.041	1.179	385.981	182.7	0.0
AC_2	381216	6172048	55° 40.781'N	004° 53.346'W	16	0.821	2.001	385.160	182.7	2.1
AC_3	381192	6171389	55° 40.426'N	004° 53.352'W	20	0.660	2.661	384.499	180.6	30.0
AC_4	381015	6171108	55° 40.272'N	004° 53.513'W	22	0.332	2.993	384.168	210.6	19.1
AC_5	380853	6170978	55° 40.199'N	004° 53.664'W	25	0.208	3.201	383.960	229.6	12.3
AC_6	380611	6170857	55° 40.130'N	004° 53.892'W	46	0.271	3.472	383.689	242.0	30.3
AC_7	380408	6170547	55° 39.961'N	004° 54.077'W	53	0.370	3.842	383.319	211.7	19.7
AC_8	380174	6169573	55° 39.432'N	004° 54.275'W	60	1.002	4.844	382.316	192.0	0.9
AC_9	379460	6166398	55° 37.711'N	004° 54.872'W	79	3.255	8.099	379.062	191.1	10.0
AC_10	379389	6164909	55° 36.907'N	004° 54.900'W	79	1.492	9.591	377.570	181.1	2.8
AC_11	379339	6164389	55° 36.626'N	004° 54.934'W	81	0.522	10.113	377.048	183.9	3.8
AC_12	379172	6163361	55° 36.070'N	004° 55.066'W	87	1.042	11.155	376.006	187.7	2.5

AC_13	378876	6160871	55° 34.724'N	004° 55.282'W	92	2.508	13.662	373.498	185.2	8.0
AC_14	378904	6159599	55° 34.039'N	004° 55.222'W	91	1.273	14.935	372.226	177.2	4.1
AC_15	379012	6158456	55° 33.425'N	004° 55.090'W	84	1.148	16.083	371.077	173.0	5.8
AC_16	379009	6158019	55° 33.189'N	004° 55.081'W	82	0.437	16.520	370.640	178.8	2.4
AC_17	378997	6157779	55° 33.060'N	004° 55.086'W	82	0.240	16.761	370.400	181.2	13.3
AC_18	379089	6157284	55° 32.794'N	004° 54.986'W	75	0.504	17.265	369.896	167.9	11.8
AC_19	379078	6156780	55° 32.523'N	004° 54.983'W	76	0.504	17.769	369.392	179.7	0.8
AC_20	379069	6155475	55° 31.819'N	004° 54.958'W	76	1.305	19.074	368.086	178.8	5.8
AC_21	378771	6152732	55° 30.337'N	004° 55.168'W	75	2.759	21.833	365.327	184.6	20.2
AC_22	378850	6152417	55° 30.168'N	004° 55.085'W	76	0.325	22.159	365.002	164.4	19.2
AC_23	379010	6152173	55° 30.039'N	004° 54.927'W	75	0.292	22.451	364.710	145.2	6.2
Sirius_North_(2)_Cabl	379124	6152034	55° 29.966'N	004° 54.815'W	75	0.180	22.630	364.530	139.0	0.0
Sirius_North_(1)_Cabl	379129	6152028	55° 29.963'N	004° 54.810'W	75	0.007	22.638	364.523	139.0	0.0
AC_24	379272	6151855	55° 29.872'N	004° 54.670'W	76	0.225	22.862	364.298	139.0	3.1
Lanis_3_Cable_IS	380434	6150276	55° 29.038'N	004° 53.526'W	81	1.961	24.823	362.337	142.0	0.0
AC_25	380962	6149561	55° 28.660'N	004° 53.007'W	79	0.889	25.712	361.448	142.1	14.8
AC_26	381055	6149324	55° 28.534'N	004° 52.912'W	76	0.255	25.967	361.193	156.9	19.6
AC_27	381100	6148046	55° 27.846'N	004° 52.837'W	76	1.278	27.246	359.915	176.5	1.5
AC_28	381116	6145941	55° 26.712'N	004° 52.768'W	74	2.105	29.351	357.809	178.0	16.8
AC_29	380993	6145520	55° 26.483'N	004° 52.874'W	72	0.439	29.790	357.370	194.8	6.7
AC_30	380800	6145068	55° 26.237'N	004° 53.045'W	71	0.492	30.282	356.878	201.5	6.4
AC_31	380248	6144089	55° 25.702'N	004° 53.542'W	70	1.123	31.406	355.755	207.9	7.1

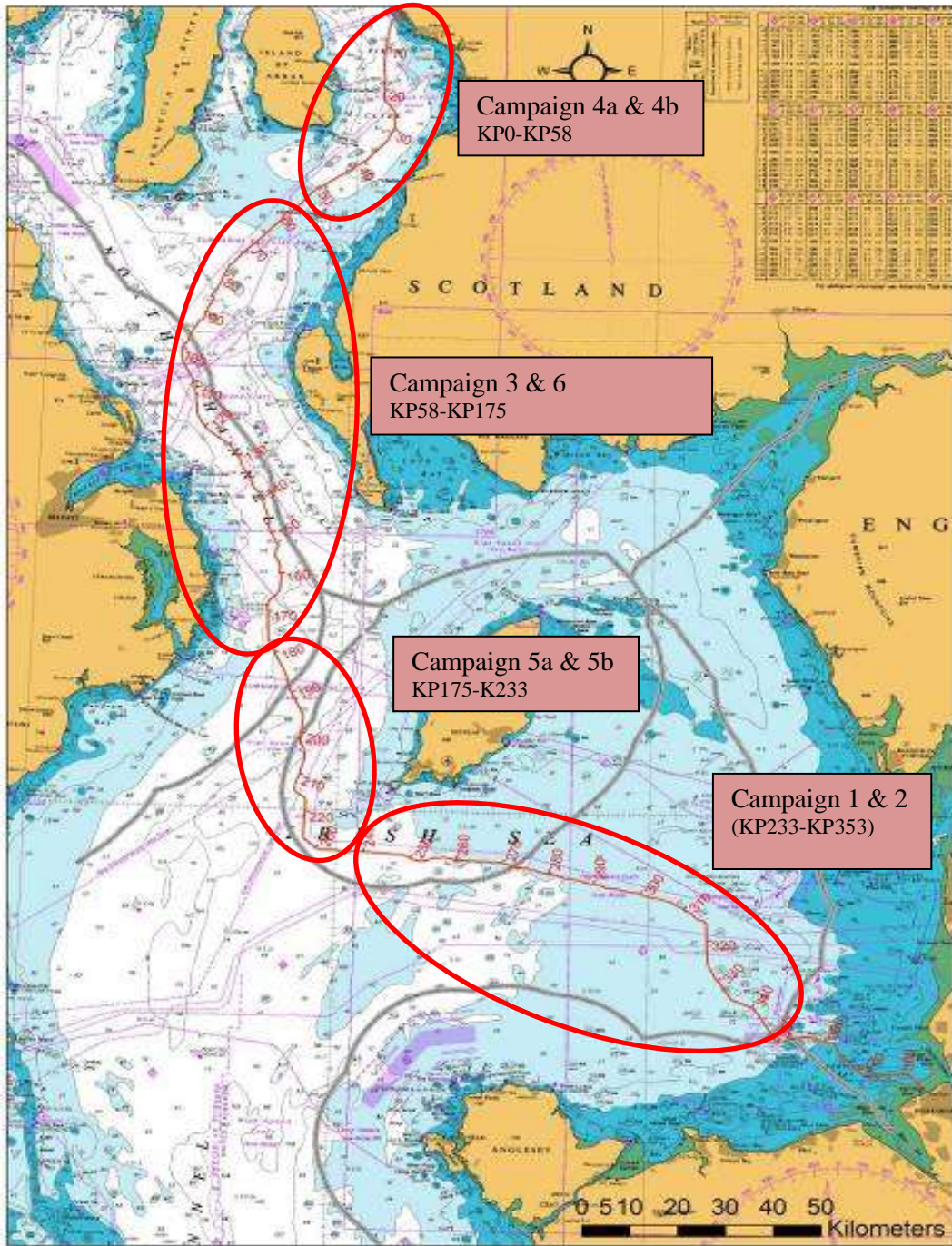
AC_32	379758	6142893	55° 25.050'N	004° 53.976'W	66	1.294	32.699	354.461	200.7	19.3
AC_33	379457	6142554	55° 24.863'N	004° 54.252'W	66	0.453	33.152	354.008	220.0	2.1
AC_34	378674	6141735	55° 24.410'N	004° 54.973'W	63	1.133	34.286	352.875	222.1	0.2
AC_35	378147	6141187	55° 24.107'N	004° 55.457'W	62	0.760	35.046	352.115	222.3	0.6
AC_36	375226	6138084	55° 22.390'N	004° 58.141'W	56	4.263	39.309	347.852	221.7	11.8
AC_37	374305	6137442	55° 22.030'N	004° 58.995'W	56	1.123	40.432	346.728	233.5	1.4
AC_38	363859	6130550	55° 18.150'N	005° 08.675'W	50	12.516	52.949	334.212	235.0	14.6
AC_39	360198	6126500	55° 15.907'N	005° 12.012'W	47	5.460	58.409	328.752	220.4	18.0
AC_40	359783	6126262	55° 15.772'N	005° 12.396'W	47	0.478	58.887	328.273	238.4	16.8

Table 2 – Campaign 5 installation section route

ID (Position Name / Event)	WGS84 - UTM 30 N		WGS84		Water Depth referred to LAT (m)	Geodetic				Turning Angle (deg)
	Easting	Northing	Latitude	Longitude		Partial Distance (km)	KP (km) from Ardneil	RKP (km) from Wirral	Bearing (deg)	
AC_292	354483	6028508	54° 23.011'N	005° 14.447'W	112	0,488	173,505	213,655	175,3	1,3
AC_293	354567	6025426	54° 21.352'N	005° 14.279'W	110	3,083	176,588	210,572	176,6	19,8
AC_294	354867	6024659	54° 20.944'N	005° 13.980'W	105	0,823	177,411	209,749	156,9	1,6
AC_295	355951	6022094	54° 19.580'N	005° 12.906'W	97	2,786	180,197	206,963	155,3	9,9
AC_296	356208	6021696	54° 19.370'N	005° 12.658'W	114	0,474	180,671	206,490	145,4	8,8
AC_297	358422	6016720	54° 16.726'N	005° 10.475'W	117	5,447	186,118	201,043	154,2	19,5
Manx- Northern_Ireland_Cable_IS	358485	6015925	54° 16.299'N	005° 10.394'W	115	0,797	186,915	200,246	173,7	0,0
AC_298	358583	6014691	54° 15.635'N	005° 10.269'W	113	1,239	188,154	199,007	173,7	20,4
Northern_Ireland/International waters	358689	6014463	54° 15.514'N	005° 10.165'W	113	0,251	188,405	198,755	153,3	0,0
AC_299	361798	6007772	54° 11.960'N	005° 07.119'W	125	7,379	195,784	191,377	153,3	16,1
AC_300	361874	6007280	54° 11.696'N	005° 07.035'W	127	0,498	196,282	190,879	169,4	15,4
International/Isle of Man waters	361403	6003215	54° 09.498'N	005° 07.356'W	126	4,093	200,375	186,786	184,9	0,0
AC_301	361242	6001826	54° 08.747'N	005° 07.465'W	123	1,399	201,773	185,387	184,9	13,7
AC_302	361296	6001391	54° 08.513'N	005° 07.404'W	121	0,439	202,212	184,949	171,2	15,2

Interconnector_2_Pipeline_IS	361767	6000238	54° 07.899'N	005° 06.940'W	114	1,245	203,457	183,703	156,1	0,0
AC_303	361980	5999716	54° 07.621'N	005° 06.730'W	111	0,564	204,022	183,139	156,1	10,6
AC_304	362080	5999231	54° 07.361'N	005° 06.625'W	108	0,495	204,517	182,644	166,7	10,4
Ballyhornan-Port Erin_No3_Coax_Cable_OOS	362097	5998454	54° 06.943'N	005° 06.588'W	104	0,777	205,294	181,867	177,1	0,0
AC_305	362121	5997310	54° 06.327'N	005° 06.535'W	98	1,145	206,439	180,722	177,1	19,5
AC_306	361291	5994795	54° 04.958'N	005° 07.226'W	93	2,648	209,088	178,073	196,6	8,3
AC_307	361183	5994181	54° 04.625'N	005° 07.308'W	93	0,624	209,711	177,449	188,2	11,0
AC_308	360869	5993362	54° 04.179'N	005° 07.574'W	92	0,877	210,589	176,572	199,3	2,1
AC_309	360108	5991137	54° 02.968'N	005° 08.210'W	72	2,351	212,940	174,220	197,2	11,4
AC_310	360001	5990326	54° 02.529'N	005° 08.286'W	74	0,819	213,759	173,402	185,8	20,0
AC_311	360073	5989997	54° 02.353'N	005° 08.210'W	73	0,337	214,096	173,065	165,8	19,1
AC_312	360225	5989750	54° 02.222'N	005° 08.064'W	71	0,289	214,385	172,776	146,7	20,0
Interconnector_1_Pipeline_IS	360962	5989166	54° 01.919'N	005° 07.373'W	70	0,941	215,326	171,834	126,7	0,0
AC_313	362082	5988278	54° 01.459'N	005° 06.324'W	69	1,429	216,755	170,405	126,7	20,0
AC_314	362266	5987978	54° 01.300'N	005° 06.147'W	68	0,352	217,107	170,053	146,7	15,2
AC_315	362346	5987707	54° 01.155'N	005° 06.067'W	68	0,283	217,390	169,771	161,9	20,0
AC_316	361807	5979165	53° 56.543'N	005° 06.328'W	64	8,560	225,950	161,211	181,9	20,0
AC_317	361897	5978858	53° 56.379'N	005° 06.237'W	64	0,321	226,271	160,890	162,0	12,0
AC_318	362049	5978575	53° 56.229'N	005° 06.090'W	64	0,321	226,592	160,569	150,0	19,9
AC_319	364565	5976326	53° 55.057'N	005° 03.733'W	69	3,375	229,967	157,194	130,1	18,5
AC_320	365034	5976125	53° 54.956'N	005° 03.299'W	70	0,511	230,477	156,683	111,6	18,5
AC_321	366140	5976034	53° 54.924'N	005° 02.287'W	57	1,110	231,587	155,574	93,0	3,1

AC_322	366767	5976017	53° 54.925'N	005° 01.714'W	60	0,627	232,214	154,946	90,0	6,3
AC_323	367185	5975958	53° 54.900'N	005° 01.332'W	62	0,422	232,636	154,525	96,3	8,9
AC_324	367466	5975963	53° 54.906'N	005° 01.075'W	62	0,282	232,917	154,243	87,4	3,2
AC_325	367817	5975988	53° 54.925'N	005° 00.755'W	66	0,352	233,269	153,892	84,3	5,6
AC_326	368688	5975965	53° 54.926'N	004° 59.959'W	68	0,872	234,141	153,020	89,9	19,8
AC_327	369780	5975539	53° 54.713'N	004° 58.952'W	66	1,172	235,313	151,847	109,7	15,1



Contact Details:

Further enquiries should be addressed to the following contacts:

AWJ Marine	Jim Andrews <i>(who will also coordinate the Fisheries liaison for this operation)</i> jim@awjmarine.co.uk Office: +44 (0) 845-880-2540, Mobile: +44 (0) 7908-225865,
Prysmian Project Manager	Alberto Pirovano alberto.pirovano@prysmiangroup.com Office: +39 02 6449 33590 Mobile: +39 335 5962819
Master of Giulio Verne	master@gverne.it VSAT: +39 0553 921155 Mobile: +39 335 5261462 SAT: 00870 773240838
Master of Normand Pacific	pacific.bridge@pacific.solstad.no VSAT: +47 52 85 60 70 SAT: +870 765 064 841

Distribution List:

abat@eircom.net
admin@welshsailing.org
Alan.Gibson@marinemanagement.org.uk
alana.murphy@rya.org.uk
alasdair.wilkie@hiberniaatlantic.com
Alec.keep@mcga.gov.uk
andre.coccucio@mcga.gov.uk
andrew.sheen@irishferries.com
annette.stube@maersk.com
b.armstrong@sff.co.uk
barrowmc@abports.co.uk
bdeas@nffo.org.uk
blackpool@marinemanagement.org.uk
bryan.davies@heyshamport.com
businessdevelopmentdepartment3@wales.gsi.gov.uk
caroline.price@rya.org.uk ,
CETI@Centrica.com
Charlie.Mawer@clydeport.co.uk
chris.clark@gov.im
christopherkeogh@transport.ie
'claire.storey@naturalengland.org.uk'
clive.lane@mcga.gov.uk
clyde.coastguard@mcga.gov.uk
colin.brown@mcga.gov.uk
colin.brown@mcga.gov.uk
crousing@rya.co.uk
d.obrien@cil.ie
dale.rodmeil@nffo.org.uk
MerseyMarineManagers@Peelports.com
danny.everitt@mscuk.com
dannyobrien@bge.ie
david.crowther@centrica.com
DEandT@wales.gsi.gov.uk
DeshWebCorrespondence@Wales.GSI.Gov.UK
dlw@seatruckgroup.co.uk
doe.iemonitoring@doeni.gov.uk
doug.percy@transsectormarine.co.uk
dtd@cumbriasfc.fsnet.co.uk
econsentsadmin@scotland.gsi.gov.uk
emmet.mcfadden@mutual-energy.com
emmet.mcfadden@mutual-energy.com
EnergyConsents@scotland.gsi.gov.uk
enquiries@drdni.gov.uk
erecra@talktalk.net
jon.ford@cw.com
jon.ford@vodafone.com
jonwarren@merseywharf.co.uk
josephanik@wirral.gov.uk
Joyce.johnson@mcga.gov.uk
keith.3.brooks@bt.com
keith.3.brooks@bt.com
keith.tatman@mcga.gov.uk
kenneth.poole@cemex.com
Kevin.Best@BHPBilliton.com
kingfisher@seafish.co.uk
liverpool_mo@mcga.gov.uk
lykup@dongenergy.co.uk
mail@liverpoolmarina.com
marine.operations.centre@gov.im
marine.team@bt.com
Mark.Wilber@external.eni.com
mark.woodward@steampacket.com
markthomas@wirral.gov.uk
maurice.smith@esbi.com
mdurcan@bge.ie
Michael.Brew@gov.im
michael.moore9@btinternet.com
mick.mcguckin@mutual-energy.com
MS.marinelicensing@scotland.gsi.gov.uk
n.lauder@sff.co.uk
natkinson@abports.co.uk
navigation.directorate@thls.org
navigation@nlb.org.uk
neil.wellum@marinemanagement.org.uk
nkelly@doehle-iom.com
norman.leece@mezeron.com
nridehalgh@abports.co.uk
'nwplanning@naturalengland.org.uk'
osbornted@aol.com
paul.o'rouke@eirgrid.com
paul.townsend@mcga.gov.uk
peter.hodgetts@thecrownestate.co.uk
peter.jamieson@virginmedia.co.uk
peter.jordan@sse.com
portcontrol@stenaline.com
robert.floyd@wales.gsi.gov.uk
Robert.Whiteley@naturalengland.org.uk
Ron.Bailey@clydeport.co.uk

fisheries@wales.gsi.gov.uk
Fleet.Operations@POferries.com
freighthelp@poferries.com
gedherby@wirral.gov.uk
graeme.proctor@mcga.gov.uk
Gurpal.Ghotra@mutual-energy.com
hannah.birtles@naturalengland.org.uk
hcdfiles@ukho.gov.uk
hdcf@ukho.gov.uk
hdcfiles@ukho.gov.uk
helen.elphick@thecrownestate.co.uk
holyheadcoastguard@mcga.gov.uk
hq@stratmarine.com
ian@dickies.co.uk
ianre@dongenergy.co.uk
info.uk@stenaline.com
info@clydeport.co.uk
info@mezeron.com
info@m-h-a.co.uk
info@rnli.org.uk
info@whitehavenhc.org.uk
information@detini.gov.uk
iomfishermen@manx.net
jim@awjmarine.co.uk
jmichel@north-ayrshire.gov.uk
john.bateman@shell.com
johnentwistle@wirral.gov.uk

s.alexander@sff.co.uk
s.atkins@nw-ifca.gov.uk
scalden@dsml.co.uk
sff@sff.co.uk
sprince@dsml.co.uk
stephen.hemphill@mutual-energy.com
steve.davie@xodusgroup.com
steve.gallimore@merseydocks.co.uk
Stevie.travis@mcga.gov.uk
stliv@dongenergy.co.uk
stuart.carruthers@rya.org.uk
Tariq.Amin@eni.com
tony@ramsey-steamship.com
vanoc@dongenergy.co.uk
vts.portoperations@merseydocks.co.uk
wag-en@mailuk.custhelp.com
walneytraffic@dongenergy.dk
will.calderbank@portofmostyn.com
WM.Belfast@mcga.gov.uk
WM.clyde@mcga.gov.uk
wm.holyhead@mcga.gov.uk
wm.liverpool@mcga.gov.uk
wm_holyhead@mcga.gov.uk
Wm_liverpool@mcga.gov.uk
wyn.parry@stenaline.com
XASCO@dongenergy.co.uk
xmrob@dongenergy.dk