

NOTICE TO MARINERS

Issue Date: 10th February, 2017

Western Link Project

Deep water cables installation – Exposed cable sections

Mariners are advised that following the completion of Campaign 3, 6 4a and 4b, there are sections of exposed cable along the Western HVDC Link cable route as detailed in **Table 1 and Table 2**.

This notice provide the full list of the several sections of exposed cable including the planned cable crossing locations previously communicated through notices to mariners. These sections are currently being monitored by Guard Vessels which have been deployed locally.

Cable protection works are due to take place for during the period February 2017 – March 2017. Details of the vessels that will be used to carry out this protection work and the nature of this work is provided in a separate notice to mariners.

Vessels are requested to pass at a safe speed and distance and fishing vessels are advised to remain a safe distance (approximately 1.5 nautical miles) from the areas identified in Table 1 & 2. Guard Vessels have been deployed at each location to aid in monitoring the exposed areas and will advise of safe distances locally.

Table 1 – Exposed sections & Guard Vessel Locations for Campaign 3 & Campaign 6 cable lengths in the North Channel.

| | | Patrolling Area | | | | |
|-----------------|---------|--------------------------|------------|--------------|--------------|---------------|
| | | Coordinates - Campaign 3 | | | | |
| | | KP | Easting | Northing | Latitude | Longitude |
| Guard Vessel 6 | From | 176.345 | 354545.00 | 6025692.00 | 54°21.495'N | 5° 14.307'W |
| | To | 176.405 | 345546.00 | 6025632.00 | 54°21.304'N | 5° 22.607'W |
| | From | 154.956 | 356103.85 | 6045875.61 | 54°32.397'N | 5°13.457'W |
| | To | 154.895 | 356114.58 | 6045935.65 | 54°32.430'N | 5°13.449'W |
| | From | | | | | |
| | To | | | | | |
| | From | | | | | |
| | To | | | | | |
| Guard Vessel 7 | From | 138.340 | 351615.55 | 6061063.77 | 54°40.503'N | 5°18.077'W |
| | To | 138.010 | 351399.47 | 6061311.55 | 54°40.632'N | 5°18.286'W |
| | From | 136.689 | 351167.96 | 6062577.78 | 54°41.311'N | 5°18.540'W |
| | To | 136.292 | 350950.85 | 6062904.93 | 54°41.483'N | 5°18.752'W |
| | From | 135.634 | 350796.50 | 6063538.90 | 54°41.822'N | 5°18.915'W |
| | To | 134.938 | 350455.34 | 6064141.08 | 54°42.140'N | 5°19.251'W |
| | From | 131.766 | 348880.63 | 6066842.00 | 54°43.567'N | 5°20.800'W |
| | To | 130.933 | 348683.49 | 6067653.76 | 54°44.001'N | 5°21.009'W |
| | From | 123.463 | 343892.14 | 6073212.73 | 54°46.908'N | 5°25.648'W |
| | To | 121.624 | 342434.35 | 6074325.67 | 54°47.480'N | 5°27.043'W |
| | From | 120.379 | 341556.85 | 6075195.64 | 54°47.932'N | 5°27.890'W |
| | To | 119.308 | 340874.19 | 6076015.18 | 54°48.360'N | 5°28.553'W |
| From | 117.861 | 340241.89 | 6077298.60 | 54°49.040'N | 5°29.186'W | |
| To | 117.291 | 339979.14 | 6077799.05 | 54°49.304'N | 5°29.447'W | |
| Guard Vessel 8 | From | | | | | |
| | To | | | | | |
| | From | 111.668 | 339370.44 | 6083311.93 | 54°52.262'N | 5°30.199'W |
| | To | 106.028 | 337814.47 | 6088474.28 | 54°55.013'N | 5°31.827'W |
| | From | 104.628 | 337185.93 | 6089721.78 | 54°55.673'N | 5°32.457'W |
| | To | 103.590 | 336720.88 | 6090644.62 | 54°56.161'N | 5°32.923'W |
| | From | 99.326 | 336932.53 | 6094748.74 | 54° 58.376'N | 5° 32.865'W |
| | To | 98.491 | 337552.67 | 6095306.72 | 54° 58.688'N | 5° 32.303'W |
| From | 97.971 | 337776.16 | 6095772.25 | 54° 58.944'N | 5° 32.110'W | |
| To | 96.700 | 338257.51 | 6096946.64 | 54° 59.586'N | 5° 31.699'W | |
| Guard Vessel 9 | From | | | | | |
| | To | | | | | |
| | From | 96.900 | 338179.40 | 6096762.54 | 54°59.485'N | 005°31.766'W |
| | To | 94.970 | 339016.14 | 6098488.40 | 55°00.431'N | 005°31.040'W |
| | From | 93.553 | 339765.28 | 6099674.54 | 55°01.084'N | 005°30.378'W |
| | To | 92.620 | 340302.71 | 6100430.79 | 55°01.502'N | 005°29.899'W |
| | From | 92.300 | 340577.62 | 6100588.36 | 55°01.592'N | 005°29.647'W |
| | To | 91.720 | 341085.83 | 6100846.56 | 55°01.741'N | 005°29.179'W |
| | From | 90.419 | 341345.71 | 6102081.14 | 55°02.411'N | 005°28.976'W |
| | To | 90.185 | 341429.50 | 6102298.71 | 55°02.530'N | 005°28.905'W |
| From | 78.442 | 346086.72 | 6112678.63 | 55°08.209'N | 005°24.873'W | |
| To | 78.293 | 346147.29 | 6112814.74 | 55°08.284'N | 005°24.820'W | |
| Guard Vessel 10 | From | 60.800 | 358107.00 | 6125476.00 | 55°15.319'N | 005° 13.954'W |
| | To | 60.200 | 358512.70 | 6125911.90 | 55°15.561'N | 005°13.584'W |

| Patrolling Area | | | | | | |
|--------------------------|---------|-----------|------------|--------------|--------------|-------------|
| Coordinates - Campaign 6 | | | | | | |
| | KP | Easting | Northing | Latitude | Longitude | |
| Guard Vessel 6 | From | 176.031 | 354556.10 | 6026373.40 | 54°21.863 N | 5°14.317 W |
| | To | 175.834 | 354549.80 | 6026570.70 | 54°21.969 N | 5°14.329 W |
| | To | 159.925 | 356965.83 | 6041471.41 | 54°30.039 N | 5°12.530 W |
| | From | 155.502 | 356105.99 | 6045668.36 | 54°32.286 N | 5°13.449 W |
| | To | 155.433 | 356119.14 | 6045736.02 | 54°32.322 N | 5°13.439 W |
| | From | 154.280 | 356288.60 | 6046846.91 | 54°32.925 N | 5°13.222 W |
| | To | 154.230 | 356414.32 | 6046889.63 | 54°32.949 N | 5°13.199 W |
| | From | 147.212 | 354799.28 | 6053305.91 | 54°36.378 N | 5°14.887 W |
| | To | 147.188 | 354795.63 | 6053329.62 | 54°36.391 N | 5°14.890 W |
| | From | 145.963 | 354437.36 | 6054488.05 | 54°37.009 N | 5°15.258 W |
| To | 145.834 | 354412.50 | 6054614.62 | 54°37.077 N | 5°15.285 W | |
| Guard Vessel 7 | From | | | | | |
| | To | | | | | |
| | From | 138.684 | 351663.29 | 6061065.01 | 54°40.504 N | 5°18.033 W |
| | To | 138.266 | 351386.86 | 6061355.70 | 54°40.656 N | 5°18.299 W |
| | From | 137.006 | 351190.60 | 6062577.03 | 54°41.310 N | 5°18.518 W |
| | To | 136.573 | 350969.60 | 6062923.86 | 54°41.493 N | 5°18.735 W |
| | From | 132.075 | 348904.19 | 6066846.47 | 54°43.569 N | 5°20.778 W |
| | To | 131.198 | 348709.84 | 6067668.62 | 54°44.009 N | 5°20.984 W |
| | From | 123.731 | 343928.63 | 6073231.79 | 54°46.919' N | 5°25.615' W |
| | To | 121.845 | 342444.03 | 6074352.19 | 54°47.494' N | 5°27.035' W |
| From | 120.673 | 341609.74 | 6075167.77 | 54°47.918' N | 5°27.840' W | |
| To | 119.505 | 340874.71 | 6076043.98 | 54°48.376' N | 5°28.554' W | |
| From | 118.096 | 340271.43 | 6077302.88 | 54°49.043' N | 5°29.158' W | |
| To | 117.475 | 339995.63 | 6077845.18 | 54°49.330' N | 5°29.433' W | |
| Guard Vessel 8 | From | 113.475 | 339482.41 | 6081769.34 | 54°51.433 N | 5°30.043 W |
| | To | 112.967 | 339455.34 | 6082275.44 | 54°51.705 N | 5°30.085 W |
| | From | 111.923 | 339410.49 | 6083295.09 | 54°52.254 N | 5°30.161 W |
| | To | 106.245 | 337845.44 | 6088474.11 | 54°55.013 N | 5°31.797 W |
| | From | 104.863 | 337229.75 | 6089701.10 | 54°55.665 N | 5°32.418 W |
| | To | 103.749 | 336741.14 | 6090682.31 | 54°56.131 N | 5°32.905 W |
| | From | 99.625 | 336898.02 | 6094672.82 | 54°58.334 N | 5°32.894 W |
| | To | 98.640 | 337605.68 | 6095324.76 | 54°58.699 N | 5°32.254 W |
| From | 98.215 | 337781.79 | 6095693.88 | 54°58.908 N | 5°32.099 W | |
| To | 95.111 | 339053.35 | 6098487.69 | 55°00.431 N | 5°31.005 W | |
| Guard Vessel 9 | From | 94.113 | 339585.88 | 6099318.27 | 55°00.889' N | 5°30.533' W |
| | To | 93.936 | 339672.06 | 6099458.86 | 55°00.972' N | 5°30.453' W |
| | From | 93.724 | 339784.95 | 6099639.60 | 55°01.070' N | 5°30.355' N |
| | To | 92.765 | 340305.99 | 6100409.75 | 55°01.492' N | 5°29.893' N |
| | From | 92.456 | 340575.15 | 6100557.72 | 55°01.575' N | 5°29.648' N |
| | To | 91.838 | 341113.29 | 6100833.85 | 55°01.732' N | 5°29.157' W |
| | From | 90.460 | 341398.33 | 6102137.13 | 55°02.442' N | 5°28.929' W |
| | To | 90.360 | 341440.04 | 6102227.86 | 55°02.492' N | 5°28.893' W |
| | From | 87.926 | 342540.08 | 6104363.22 | 55°03.663' N | 5°27.931' N |
| | To | 87.856 | 342577.99 | 6104422.09 | 55°03.695' N | 5°27.898' N |
| From | 85.905 | 342862.30 | 6106203.11 | 55°04.658' N | 5°27.690' W | |
| To | 85.463 | 342915.27 | 6106598.45 | 55°04.874' N | 5°27.653' W | |
| Guard Vessel 10 | From | 56.095 | 361795.00 | 6128251.00 | 55°16.877' N | 5°10.577' W |
| | To | 55.800 | 361993.50 | 6128470.10 | 55°16.998' N | 5°10.376' W |

Table 2 – Exposed sections & Guard Vessel Locations for Campaign 4 a & b cable in the Clyde

| ID (Position Name / Event) | WGS84 - UTM 30 N | | WGS84 | | Water Depth referred to LAT (m) | Geodetic | | | | Turning Angle (deg) |
|-------------------------------|------------------|----------|--------------|---------------|---|-----------------------------|----------------------------|-------------------------------|------------------|---------------------------|
| | Easting | Northing | Latitude | Longitude | | Partial Distance (km) | KP (km) from Arднеil | RKP (km) from Wirral | Bearing (deg) | |
| JB_ARDNEIL | 381725 | 6173953 | 55° 41.815'N | 004° 52.910'W | - | - | 0.000 | 387.161 | - | - |
| HDD_SEA_END | 381465 | 6173437 | 55° 41.533'N | 004° 53.145'W | 1 | 0.579 | 0.579 | 386.582 | 205.2 | 7.5 |
| AC_1 | 381280 | 6172908 | 55° 41.246'N | 004° 53.307'W | 10 | 0.560 | 1.139 | 386.022 | 197.7 | 15.0 |
| 10m | 381277 | 6172867 | 55° 41.224'N | 004° 53.309'W | 10 | 0.041 | 1.179 | 385.981 | 182.7 | 0.0 |
| AC_2 | 381216 | 6172048 | 55° 40.781'N | 004° 53.346'W | 16 | 0.821 | 2.001 | 385.160 | 182.7 | 2.1 |
| AC_3 | 381192 | 6171389 | 55° 40.426'N | 004° 53.352'W | 20 | 0.660 | 2.661 | 384.499 | 180.6 | 30.0 |
| AC_4 | 381015 | 6171108 | 55° 40.272'N | 004° 53.513'W | 22 | 0.332 | 2.993 | 384.168 | 210.6 | 19.1 |
| AC_5 | 380853 | 6170978 | 55° 40.199'N | 004° 53.664'W | 25 | 0.208 | 3.201 | 383.960 | 229.6 | 12.3 |
| AC_6 | 380611 | 6170857 | 55° 40.130'N | 004° 53.892'W | 46 | 0.271 | 3.472 | 383.689 | 242.0 | 30.3 |
| AC_7 | 380408 | 6170547 | 55° 39.961'N | 004° 54.077'W | 53 | 0.370 | 3.842 | 383.319 | 211.7 | 19.7 |
| AC_8 | 380174 | 6169573 | 55° 39.432'N | 004° 54.275'W | 60 | 1.002 | 4.844 | 382.316 | 192.0 | 0.9 |
| AC_9 | 379460 | 6166398 | 55° 37.711'N | 004° 54.872'W | 79 | 3.255 | 8.099 | 379.062 | 191.1 | 10.0 |
| AC_10 | 379389 | 6164909 | 55° 36.907'N | 004° 54.900'W | 79 | 1.492 | 9.591 | 377.570 | 181.1 | 2.8 |
| AC_11 | 379339 | 6164389 | 55° 36.626'N | 004° 54.934'W | 81 | 0.522 | 10.113 | 377.048 | 183.9 | 3.8 |
| AC_12 | 379172 | 6163361 | 55° 36.070'N | 004° 55.066'W | 87 | 1.042 | 11.155 | 376.006 | 187.7 | 2.5 |
| AC_13 | 378876 | 6160871 | 55° 34.724'N | 004° 55.282'W | 92 | 2.508 | 13.662 | 373.498 | 185.2 | 8.0 |
| AC_14 | 378904 | 6159599 | 55° 34.039'N | 004° 55.222'W | 91 | 1.273 | 14.935 | 372.226 | 177.2 | 4.1 |
| AC_15 | 379012 | 6158456 | 55° 33.425'N | 004° 55.090'W | 84 | 1.148 | 16.083 | 371.077 | 173.0 | 5.8 |
| AC_16 | 379009 | 6158019 | 55° 33.189'N | 004° 55.081'W | 82 | 0.437 | 16.520 | 370.640 | 178.8 | 2.4 |
| AC_17 | 378997 | 6157779 | 55° 33.060'N | 004° 55.086'W | 82 | 0.240 | 16.761 | 370.400 | 181.2 | 13.3 |
| AC_18 | 379089 | 6157284 | 55° 32.794'N | 004° 54.986'W | 75 | 0.504 | 17.265 | 369.896 | 167.9 | 11.8 |
| AC_19 | 379078 | 6156780 | 55° 32.523'N | 004° 54.983'W | 76 | 0.504 | 17.769 | 369.392 | 179.7 | 0.8 |
| AC_20 | 379069 | 6155475 | 55° 31.819'N | 004° 54.958'W | 76 | 1.305 | 19.074 | 368.086 | 178.8 | 5.8 |
| AC_21 | 378771 | 6152732 | 55° 30.337'N | 004° 55.168'W | 75 | 2.759 | 21.833 | 365.327 | 184.6 | 20.2 |
| AC_22 | 378850 | 6152417 | 55° 30.168'N | 004° 55.085'W | 76 | 0.325 | 22.159 | 365.002 | 164.4 | 19.2 |
| AC_23 | 379010 | 6152173 | 55° 30.039'N | 004° 54.927'W | 75 | 0.292 | 22.451 | 364.710 | 145.2 | 6.2 |
| Sirius_North_(2)_Cable_IS | 379124 | 6152034 | 55° 29.966'N | 004° 54.815'W | 75 | 0.180 | 22.630 | 364.530 | 139.0 | 0.0 |
| Sirius_North_(1)_Cable_IS | 379129 | 6152028 | 55° 29.963'N | 004° 54.810'W | 75 | 0.007 | 22.638 | 364.523 | 139.0 | 0.0 |
| AC_24 | 379272 | 6151855 | 55° 29.872'N | 004° 54.670'W | 76 | 0.225 | 22.862 | 364.298 | 139.0 | 3.1 |
| Lanis_3_Cable_IS | 380434 | 6150276 | 55° 29.038'N | 004° 53.526'W | 81 | 1.961 | 24.823 | 362.337 | 142.0 | 0.0 |
| AC_25 | 380962 | 6149561 | 55° 28.660'N | 004° 53.007'W | 79 | 0.889 | 25.712 | 361.448 | 142.1 | 14.8 |
| AC_26 | 381055 | 6149324 | 55° 28.534'N | 004° 52.912'W | 76 | 0.255 | 25.967 | 361.193 | 156.9 | 19.6 |
| AC_27 | 381100 | 6148046 | 55° 27.846'N | 004° 52.837'W | 76 | 1.278 | 27.246 | 359.915 | 176.5 | 1.5 |
| AC_28 | 381116 | 6145941 | 55° 26.712'N | 004° 52.768'W | 74 | 2.105 | 29.351 | 357.809 | 178.0 | 16.8 |
| AC_29 | 380993 | 6145520 | 55° 26.483'N | 004° 52.874'W | 72 | 0.439 | 29.790 | 357.370 | 194.8 | 6.7 |
| AC_30 | 380800 | 6145068 | 55° 26.237'N | 004° 53.045'W | 71 | 0.492 | 30.282 | 356.878 | 201.5 | 6.4 |
| AC_31 | 380248 | 6144089 | 55° 25.702'N | 004° 53.542'W | 70 | 1.123 | 31.406 | 355.755 | 207.9 | 7.1 |
| AC_32 | 379758 | 6142893 | 55° 25.050'N | 004° 53.976'W | 66 | 1.294 | 32.699 | 354.461 | 200.7 | 19.3 |
| AC_33 | 379457 | 6142554 | 55° 24.863'N | 004° 54.252'W | 66 | 0.453 | 33.152 | 354.008 | 220.0 | 2.1 |
| AC_34 | 378674 | 6141735 | 55° 24.410'N | 004° 54.973'W | 63 | 1.133 | 34.286 | 352.875 | 222.1 | 0.2 |
| AC_35 | 378147 | 6141187 | 55° 24.107'N | 004° 55.457'W | 62 | 0.760 | 35.046 | 352.115 | 222.3 | 0.6 |
| AC_36 | 375226 | 6138084 | 55° 22.390'N | 004° 58.141'W | 56 | 4.263 | 39.309 | 347.852 | 221.7 | 11.8 |
| AC_37 | 374305 | 6137442 | 55° 22.030'N | 004° 58.995'W | 56 | 1.123 | 40.432 | 346.728 | 233.5 | 1.4 |
| AC_38 | 363859 | 6130550 | 55° 18.150'N | 005° 08.675'W | 50 | 12.516 | 52.949 | 334.212 | 235.0 | 14.6 |
| AC_39 | 360198 | 6126500 | 55° 15.907'N | 005° 12.012'W | 47 | 5.460 | 58.409 | 328.752 | 220.4 | 18.0 |
| AC_40 | 359783 | 6126262 | 55° 15.772'N | 005° 12.396'W | 47 | 0.478 | 58.887 | 328.273 | 238.4 | 16.8 |
| LANIS_3_(2)_Cable_IS | 359042 | 6126091 | 55° 15.667'N | 005° 13.090'W | 47 | 0.760 | 59.647 | 327.513 | 255.2 | 0.0 |
| AC_41 | 358744 | 6126022 | 55° 15.625'N | 005° 13.370'W | 47 | 0.307 | 59.954 | 327.206 | 255.2 | 15.9 |
| AC_42 | 358459 | 6125865 | 55° 15.535'N | 005° 13.634'W | 47 | 0.325 | 60.279 | 326.881 | 239.3 | 13.8 |
| AC_43 | 358220 | 6125645 | 55° 15.412'N | 005° 13.852'W | 47 | 0.325 | 60.604 | 326.556 | 225.4 | 15.9 |

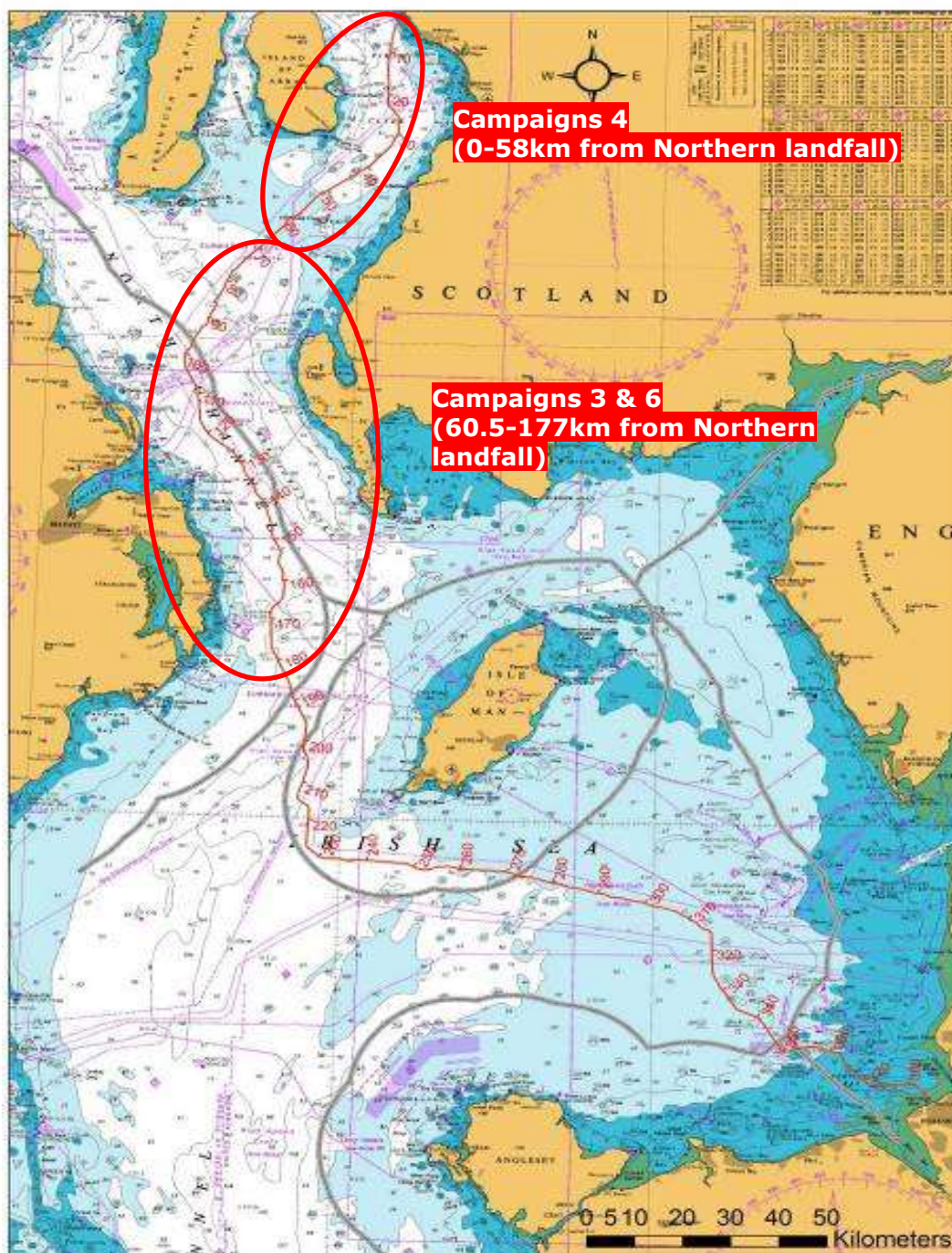


Figure 1 – Western Link cable route – Campaign 4 and Campaign 3 & 6

Contact Details:

Further enquiries should be addressed to the following contacts:

AWJ Marine

Jim Andrews
(who will also coordinate the Fisheries liaison for this operation)
jim@awjmarine.co.uk
Office: +44 (0) 845-880-2540,
Mobile: +44 (0) 7908-225865,

Prysmian Project Manager

Alberto Pirovano
alberto.pirovano@prysmiangroup.com
Office: +39 02 6449 33590
Mobile: +39 335 5962819

Distribution List:

abat@eircom.net
admin@welshsailing.org
Alan.Gibson@marinemanagement.org.uk
alana.murphy@rya.org.uk
alasdair.wilkie@hiberniaatlantic.com
Alec.Keep@mcga.gov.uk
andre.coccucio@mcga.gov.uk
andrew.sheen@irishferries.com
annette.stube@maersk.com
b.armstrong@sff.co.uk
barrowmc@abports.co.uk
bdeas@nffo.org.uk
blackpool@marinemanagement.org.uk
bryan.davies@heyshamport.com
businessdevelopmentdepartment3@wales.gsi.gov.uk
caroline.price@rya.org.uk, ,
CETI@Centrica.com
Charlie.Mawer@clydeport.co.uk
chris.clark@gov.im
christopherkeogh@transport.ie
'claire.storey@naturalengland.org.uk'
clive.lane@mcga.gov.uk
clyde.coastguard@mcga.gov.uk
colin.brown@mcga.gov.uk
colin.brown@mcga.gov.uk
crousing@rya.co.uk
d.obrien@cil.ie
dale.rodmeil@nffo.org.uk
MerseyMarineManagers@Peelports.com
danny.everitt@mscuk.com
dannyo'brien@bge.ie
david.crowther@centrica.com
DEandT@wales.gsi.gov.uk
DeshWebCorrespondence@Wales.GSI.Gov.UK
dlw@seatruckgroup.co.uk
doe.iemonitoring@doeni.gov.uk
doug.percy@transsectormarine.co.uk
dtd@cumbriasfc.fsnet.co.uk
econsentsadmin@scotland.gsi.gov.uk
emmet.mcfadden@mutual-energy.com
emmet.mcfadden@mutual-energy.com
EnergyConsents@scotland.gsi.gov.uk
enquiries@drdni.gov.uk
erecrya@talktalk.net
jon.ford@cw.com
jon.ford@vodafone.com
jonwarren@merseywharf.co.uk
josephanik@wirral.gov.uk
Joyce.johnson@mcga.gov.uk
keith.3.brooks@bt.com
keith.3.brooks@bt.com
keith.tatman@mcga.gov.uk
kenneth.poole@cemex.com
Kevin.Best@BHPBilliton.com
kingfisher@seafish.co.uk
liverpool_mo@mcga.gov.uk
lykup@dongenergy.co.uk
mail@liverpoolmarina.com
marine.operations.centre@gov.im
marine.team@bt.com
Mark.Wilber@external.eni.com
mark.woodward@steampacket.com
markthomas@wirral.gov.uk
maurice.smith@esbi.com
mdurcan@bge.ie
Michael.Brew@gov.im
michael.moore9@btinternet.com
mick.mcguckin@mutual-energy.com
MS.marinelicensing@scotland.gsi.gov.uk
n.lauder@sff.co.uk
natkinson@abports.co.uk
navigation.directorate@thls.org
navigation@nlb.org.uk
neil.wellum@marinemanagement.org.uk
nkelly@doehle-iom.com
norman.leece@mezeron.com
nridehalgh@abports.co.uk
'nwplanning@naturalengland.org.uk'
osbornted@aol.com
paul.o'rourke@eirgrid.com
paul.townsend@mcga.gov.uk
peter.hodgetts@thecrownestate.co.uk
peter.jamieson@virginmedia.co.uk
peter.jordan@sse.com
portcontrol@stenaline.com
robert.floyd@wales.gsi.gov.uk
Robert.Whiteley@naturalengland.org.uk
Ron.Bailey@clydeport.co.uk

fisheries@wales.gsi.gov.uk
Fleet.Operations@POferries.com
freighthelp@poferries.com
gedherby@wirral.gov.uk
graeme.proctor@mcga.gov.uk
Gurpal.Ghotra@mutual-energy.com
hannah.birtles@naturalengland.org.uk
hcdfiles@ukho.gov.uk
hdcf@ukho.gov.uk
hdcfiles@ukho.gov.uk
helen.elphick@thecrownestate.co.uk
holyheadcoastguard@mcga.gov.uk
hq@stratmarine.com
ian@dickies.co.uk
ianre@dongenergy.co.uk
info.uk@stenaline.com
info@clydeport.co.uk
info@mezeron.com
info@m-h-a.co.uk
info@rnli.org.uk
info@whitehavenhc.org.uk
information@detini.gov.uk
iomfishermen@manx.net
jim@awjmarine.co.uk
jmichel@north-ayrshire.gov.uk
john.bateman@shell.com
johnentwistle@wirral.gov.uk

s.alexander@sff.co.uk
s.atkins@nw-ifca.gov.uk
scalden@dsml.co.uk
sff@sff.co.uk
sprince@dsml.co.uk
stephen.hemphill@mutual-energy.com
steve.davie@xodusgroup.com
steve.gallimore@merseydocks.co.uk
Stevie.travis@mcga.gov.uk
stliv@dongenergy.co.uk
stuart.carruthers@rya.org.uk
Tariq.Amin@eni.com
tony@ramsey-steamship.com
vanoc@dongenergy.co.uk
vts.portoperations@merseydocks.co.uk
wag-en@mailuk.custhelp.com
walneytraffic@dongenergy.dk
will.calderbank@portofmostyn.com
WM.Belfast@mcga.gov.uk
WM.clyde@mcga.gov.uk
wm.holyhead@mcga.gov.uk
wm.liverpool@mcga.gov.uk
wm_holyhead@mcga.gov.uk
Wm_liverpool@mcga.gov.uk
wyn.parry@stenaline.com
XASCO@dongenergy.co.uk
xmrob@dongenergy.dk