

NOTICE TO MARINERS

Issue Date: 20th December, 2016

Western Link Project

Shallow and Deep water cable installation

Mariners are advised that commencing at the beginning of January 2017, the Giulio Verne (IMO 8302014; Call Sign IBPU) is planned to lay Pole 1 of Campaign 4 (C4, Firth of Clyde – Table 1) from Ardnail shore end at KP (Kilometer Post) 0 to KP 58 together with the first section of Pole 2 up to KP 5.

During such times the vessel will have restricted ability to manoeuvre and other vessels are requested to pass at a safe speed and distance.

The vessel will monitor VHF Channel 16 at all times.

Further details on the planned works are set out in the rest of this notice.



Fig 1 - Cable Laying vessel - Giulio Verne

Project Description

The Western Link Project consists of installing two 600 kV DC submarine cables in the Irish Sea from Ardneil (Scotland) to Wirral (England) for a total route length of about 387 km (Figure 2). The cables will usually be laid as two separate cables approximately 30 metres apart.

Cable installation for Campaign 1 & Campaign 2 (in Liverpool Bay) and for Campaign 3 & Campaign 6 (in the North Channel) have been completed.

The cable lay vessel Giulio Verne is planned to install the next campaign C4 (Firth of Clyde – Figure 2) commencing at the beginning of January 2017; Pole 1 from Ardneil shore end at KP 0 to KP 58 together with the first section of Pole 2 from Ardneil shore end at KP 0 up to KP 5.

Pole 1 and 2 will be laid in close proximity up to KP 3.8.

Landing Operations

Laying operations will start by landing the cables at Ardneil bay with Giulio Verne positioned at circa 600m from the exit of the pre-installed ducts (HDD conduits) under the beach and golf course, which is located approximately 400m seaward of the beach.

Landing operations will be performed with the assistance of a support barge LM Constructor (MMSI 8522559, Call Sign MHUJ2) and tugs together with the use of divers deployed from the barge. LM Constructor, tugs and divers will also make preparatory works a few days in advance of Giulio Verne arrival on site.

Position Name	WGS84		Geodetic
	Latitude	Longitude	KP(km)
HDD Exit	55° 41.533'N	004° 53.145'W	0,579
Giulio Verne Position	55°41.224'N	004°53.309'W	1,179

Table 1 – HDD conduits exit and Giulio Verne position coordinates

Cable Laying

For the next Campaign (C4), the Western Link HVDC cable will be installed by using the Cable Laying vessel Giulio Verne that will surface lay the cable on the seabed. The cable will be post protected by Post Lay Installation Burial (PLIB) works using jetting tools, these burial works will be covered under a separate Notice to Mariners.

Vessels will be requested to pass at a safe speed and distance and fishing vessels are advised to remain a safe distance (approximately 1.5 nautical miles) from the free laid sections and the crossing sections. Deployed Guard Vessels will monitor the exposed areas and advise of safe distances locally.

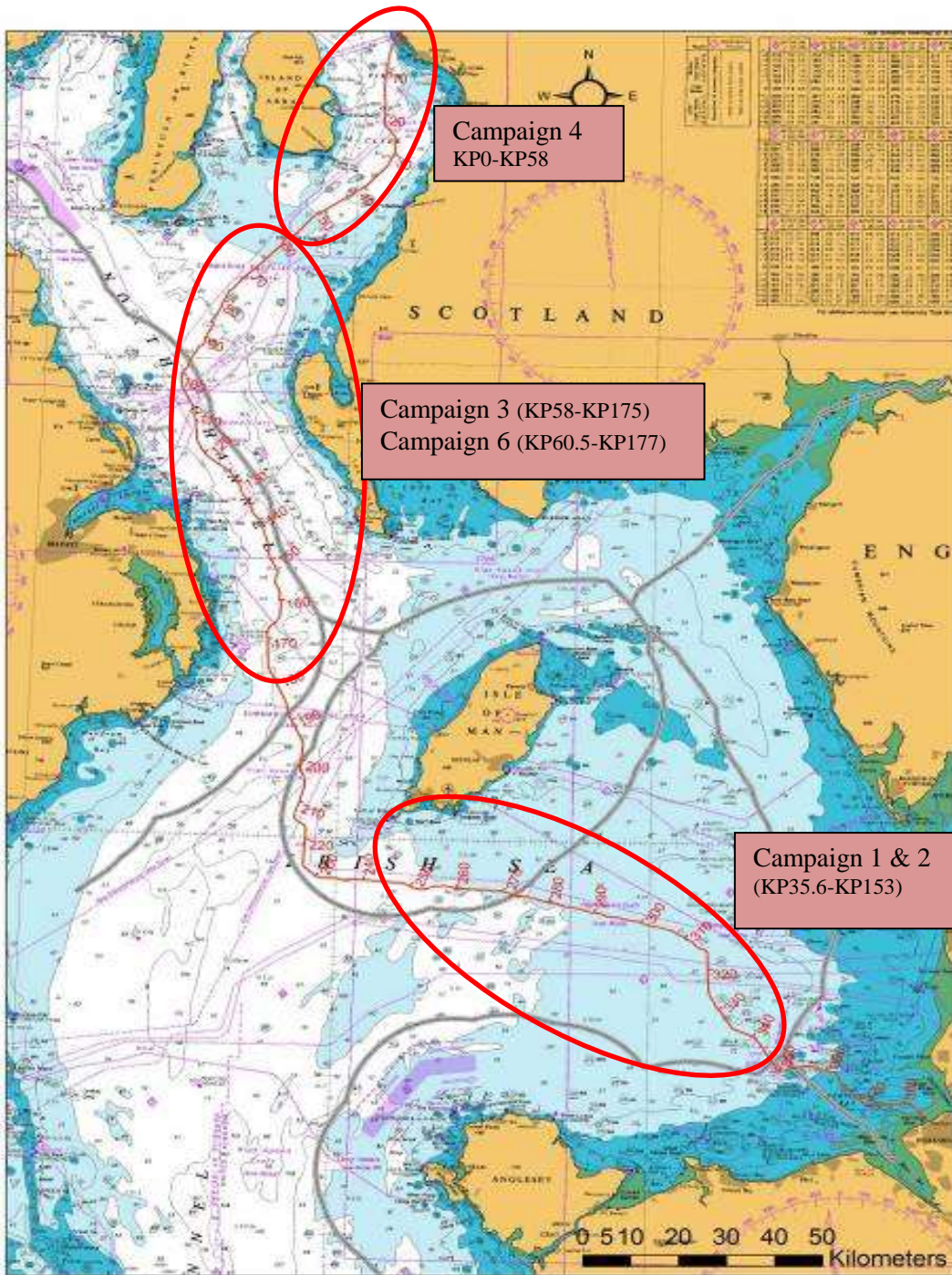


Figure 2 – Western Link cable route - Installation sections & campaigns

APPENDIX 1

Table 2 – Campaign 4 installation section route

ID (Position Name / Event)	WGS84 - UTM 30 N		WGS84		Water Depth referred to LAT (m)	Geodetic				Turning Angle (deg)
	Easting	Northing	Latitude	Longitude		Partial Distance (km)	KP (km) from Ardneil	RKP (km) from Wirral	Bearing (deg)	
JB_ARDNEIL	381725	6173953	55° 41.815'N	004° 52.910'W	-	-	0.000	387.161	-	-
HDD_SEA_END	381465	6173437	55° 41.533'N	004° 53.145'W	1	0.579	0.579	386.582	205.2	7.5
AC_1	381280	6172908	55° 41.246'N	004° 53.307'W	10	0.560	1.139	386.022	197.7	15.0
10m	381277	6172867	55°41.224'N	004°53.309'W	10	0.041	1.179	385.981	182.7	0.0
AC_2	381216	6172048	55° 40.781'N	004° 53.346'W	16	0.821	2.001	385.160	182.7	2.1
AC_3	381192	6171389	55° 40.426'N	004° 53.352'W	20	0.660	2.661	384.499	180.6	30.0
AC_4	381015	6171108	55° 40.272'N	004° 53.513'W	22	0.332	2.993	384.168	210.6	19.1
AC_5	380853	6170978	55° 40.199'N	004° 53.664'W	25	0.208	3.201	383.960	229.6	12.3
AC_6	380611	6170857	55° 40.130'N	004° 53.892'W	46	0.271	3.472	383.689	242.0	30.3
AC_7	380408	6170547	55° 39.961'N	004° 54.077'W	53	0.370	3.842	383.319	211.7	19.7
AC_8	380174	6169573	55° 39.432'N	004° 54.275'W	60	1.002	4.844	382.316	192.0	0.9
AC_9	379460	6166398	55° 37.711'N	004° 54.872'W	79	3.255	8.099	379.062	191.1	10.0
AC_10	379389	6164909	55° 36.907'N	004° 54.900'W	79	1.492	9.591	377.570	181.1	2.8
AC_11	379339	6164389	55° 36.626'N	004° 54.934'W	81	0.522	10.113	377.048	183.9	3.8
AC_12	379172	6163361	55° 36.070'N	004° 55.066'W	87	1.042	11.155	376.006	187.7	2.5
AC_13	378876	6160871	55° 34.724'N	004° 55.282'W	92	2.508	13.662	373.498	185.2	8.0
AC_14	378904	6159599	55° 34.039'N	004° 55.222'W	91	1.273	14.935	372.226	177.2	4.1
AC_15	379012	6158456	55° 33.425'N	004° 55.090'W	84	1.148	16.083	371.077	173.0	5.8
AC_16	379009	6158019	55° 33.189'N	004° 55.081'W	82	0.437	16.520	370.640	178.8	2.4
AC_17	378997	6157779	55° 33.060'N	004° 55.086'W	82	0.240	16.761	370.400	181.2	13.3
AC_18	379089	6157284	55° 32.794'N	004° 54.986'W	75	0.504	17.265	369.896	167.9	11.8
AC_19	379078	6156780	55° 32.523'N	004° 54.983'W	76	0.504	17.769	369.392	179.7	0.8

AC_20	379069	6155475	55° 31.819'N	004° 54.958'W	76	1.305	19.074	368.086	178.8	5.8
AC_21	378771	6152732	55° 30.337'N	004° 55.168'W	75	2.759	21.833	365.327	184.6	20.2
AC_22	378850	6152417	55° 30.168'N	004° 55.085'W	76	0.325	22.159	365.002	164.4	19.2
AC_23	379010	6152173	55° 30.039'N	004° 54.927'W	75	0.292	22.451	364.710	145.2	6.2
Sirius_North_(2)_Cabl	379124	6152034	55° 29.966'N	004° 54.815'W	75	0.180	22.630	364.530	139.0	0.0
Sirius_North_(1)_Cabl	379129	6152028	55° 29.963'N	004° 54.810'W	75	0.007	22.638	364.523	139.0	0.0
AC_24	379272	6151855	55° 29.872'N	004° 54.670'W	76	0.225	22.862	364.298	139.0	3.1
Lanis_3_Cable_IS	380434	6150276	55° 29.038'N	004° 53.526'W	81	1.961	24.823	362.337	142.0	0.0
AC_25	380962	6149561	55° 28.660'N	004° 53.007'W	79	0.889	25.712	361.448	142.1	14.8
AC_26	381055	6149324	55° 28.534'N	004° 52.912'W	76	0.255	25.967	361.193	156.9	19.6
AC_27	381100	6148046	55° 27.846'N	004° 52.837'W	76	1.278	27.246	359.915	176.5	1.5
AC_28	381116	6145941	55° 26.712'N	004° 52.768'W	74	2.105	29.351	357.809	178.0	16.8
AC_29	380993	6145520	55° 26.483'N	004° 52.874'W	72	0.439	29.790	357.370	194.8	6.7
AC_30	380800	6145068	55° 26.237'N	004° 53.045'W	71	0.492	30.282	356.878	201.5	6.4
AC_31	380248	6144089	55° 25.702'N	004° 53.542'W	70	1.123	31.406	355.755	207.9	7.1
AC_32	379758	6142893	55° 25.050'N	004° 53.976'W	66	1.294	32.699	354.461	200.7	19.3
AC_33	379457	6142554	55° 24.863'N	004° 54.252'W	66	0.453	33.152	354.008	220.0	2.1
AC_34	378674	6141735	55° 24.410'N	004° 54.973'W	63	1.133	34.286	352.875	222.1	0.2
AC_35	378147	6141187	55° 24.107'N	004° 55.457'W	62	0.760	35.046	352.115	222.3	0.6
AC_36	375226	6138084	55° 22.390'N	004° 58.141'W	56	4.263	39.309	347.852	221.7	11.8
AC_37	374305	6137442	55° 22.030'N	004° 58.995'W	56	1.123	40.432	346.728	233.5	1.4
AC_38	363859	6130550	55° 18.150'N	005° 08.675'W	50	12.516	52.949	334.212	235.0	14.6
AC_39	360198	6126500	55° 15.907'N	005° 12.012'W	47	5.460	58.409	328.752	220.4	18.0
AC_40	359783	6126262	55° 15.772'N	005° 12.396'W	47	0.478	58.887	328.273	238.4	16.8

Contact Details:

Further enquiries should be addressed to the following contacts:

AWJ Marine

Jim Andrews
(who will also coordinate the Fisheries liaison for this operation)
jim@awjmarine.co.uk
Office: +44 (0) 845-880-2540,
Mobile: +44 (0) 7908-225865,

Prysmian Project Manager

Alberto Pirovano
alberto.pirovano@prysmiangroup.com
Office: +39 02 6449 33590
Mobile: +39 335 5962819

Master of Giulio Verne

master@gverne.it
VSAT: +39 0553 921155
Mobile: +39 335 5261462
SAT: 00870 773240838

Distribution List:

abat@eircom.net
admin@welshsailing.org
Alan.Gibson@marinemanagement.org.uk
alana.murphy@rya.org.uk
alasdair.wilkie@hiberniaatlantic.com
Alec.KEEP@mcga.gov.uk
andre.coccucio@mcga.gov.uk
andrew.sheen@irishferries.com
annette.stube@maersk.com
b.armstrong@sff.co.uk
barrowmc@abports.co.uk
bdeas@nffo.org.uk
blackpool@marinemanagement.org.uk
bryan.davies@heyshamport.com
businessdevelopmentdepartment3@wales.gsi.gov.uk
caroline.price@rya.org.uk ,
CETI@Centrica.com
Caroline.Baxter@peelports.com
chris.clark@gov.im
christopherkeogh@transport.ie
'claire.storey@naturalengland.org.uk'
clive.lane@mcga.gov.uk
clyde.coastguard@mcga.gov.uk
colin.brown@mcga.gov.uk
colin.brown@mcga.gov.uk
crousing@rya.co.uk
d.obrien@cil.ie
dale.rodmeil@nffo.org.uk
MerseyMarineManagers@Peelports.com
danny.everitt@mscuk.com
dannyobrien@bge.ie
david.crowther@centrica.com
DEandT@wales.gsi.gov.uk
DeshWebCorrespondence@Wales.GSI.Gov.UK
dlw@seatruckgroup.co.uk
doe.iemonitoring@doeni.gov.uk
doug.percy@transsectormarine.co.uk
dtd@cumbriasfc.fsnet.co.uk
econsentsadmin@scotland.gsi.gov.uk
emmet.mcfadden@mutual-energy.com
emmet.mcfadden@mutual-energy.com
EnergyConsents@scotland.gsi.gov.uk
enquiries@drdni.gov.uk
erecya@talktalk.net
jon.ford@cw.com
jon.ford@vodafone.com
jonwarren@merseywharf.co.uk
josefhanik@wirral.gov.uk
Joyce.johnson@mcga.gov.uk
keith.3.brooks@bt.com
keith.3.brooks@bt.com
keith.tatman@mcga.gov.uk
kenneth.poole@cemex.com
Kevin.Best@BHPBilliton.com
kingfisher@seafish.co.uk
liverpool_mo@mcga.gov.uk
lykup@dongenergy.co.uk
mail@liverpoolmarina.com
marine.operations.centre@gov.im
marine.team@bt.com
Mark.Wilber@external.eni.com
mark.woodward@steampacket.com
markthomas@wirral.gov.uk
maurice.smith@esbi.com
mdurcan@bge.ie
Michael.Brew@gov.im
michael.moore9@btinternet.com
mick.mcguickin@mutual-energy.com
MS.marinelicensing@scotland.gsi.gov.uk
n.lauder@sff.co.uk
natkinson@abports.co.uk
navigation.directorate@thls.org
navigation@nlb.org.uk
neil.wellum@marinemanagement.org.uk
nkelly@doehle-iom.com
norman.leece@mezeron.com
nridehalgh@abports.co.uk
'nwplanning@naturalengland.org.uk'
osbornted@aol.com
paul.o'rourke@eirgrid.com
paul.townsend@mcga.gov.uk
peter.hodgetts@thecrownestate.co.uk
peter.jamieson@virginmedia.co.uk
peter.jordan@sse.com
portcontrol@stenaline.com
robert.floyd@wales.gsi.gov.uk
Robert.Whiteley@naturalengland.org.uk
Brian.Forrest@peelports.com

fisheries@wales.gsi.gov.uk
Fleet.Operations@POferries.com
freighthelp@poferries.com
gedherby@wirral.gov.uk
graeme.proctor@mcga.gov.uk
Gurpal.Ghotra@mutual-energy.com
hannah.birtles@naturalengland.org.uk
hcdfiles@ukho.gov.uk
hdcf@ukho.gov.uk
hcdfiles@ukho.gov.uk
helen.elphick@thecrownestate.co.uk
holyheadcoastguard@mcga.gov.uk
hq@stratmarine.com
ian@dickies.co.uk
ianre@dongenergy.co.uk
info.uk@stenaline.com
info@clydeport.co.uk
info@mezeron.com
info@m-h-a.co.uk
info@rnli.org.uk
info@whitehavenhc.org.uk
information@detini.gov.uk
iomfishermen@manx.net
jim@awjmarine.co.uk
jmichel@north-ayrshire.gov.uk
john.bateman@shell.com
johnentwistle@wirral.gov.uk

s.alexander@sff.co.uk
s.atkins@nw-ifca.gov.uk
scalden@dsml.co.uk
sff@sff.co.uk
sprince@dsml.co.uk
stephen.hemphill@mutual-energy.com
steve.davie@xodusgroup.com
steve.gallimore@merseydocks.co.uk
Stevie.travis@mcga.gov.uk
stliv@dongenergy.co.uk
stuart.carruthers@rya.org.uk
Tariq.Amin@eni.com
tony@ramsey-steamship.com
vanoc@dongenergy.co.uk
vts.portoperations@merseydocks.co.uk
wag-en@mailuk.custhelp.com
walneytraffic@dongenergy.dk
will.calderbank@portofmostyn.com
WM.Belfast@mcga.gov.uk
WM.clyde@mcga.gov.uk
wm.holyhead@mcga.gov.uk
wm.liverpool@mcga.gov.uk
wm_holyhead@mcga.gov.uk
Wm_liverpool@mcga.gov.uk
wyn.parry@stenaline.com
XASCO@dongenergy.co.uk
xmrob@dongenergy.dk