

NOTICE TO MARINERS

Issue Date: 22nd November, 2016

Western Link Project

Deep water cable Post Lay Installation Burial Works North Channel to Firth of Clyde

The Western Link Cable is being laid on the seabed between Hunterston in the Firth of Clyde and the Wirral. This notice provides an update on work that is due to be carried out to protect exposed areas of cable on the section of the route in the North Channel and the Firth of Clyde. The locations of these works are shown in **Table 1** of this report.

Mariners are advised that the Post Lay Installation Burial (PLIB) works for the exposed cable sections previously communicated for deep water installation Campaign 6 is planned to commence in December 2016 with completion expected in January 2017.

The PLIB work is being carried out by **Prysmian** using **Normand Pacific** (IMO 9491977; Call Sign LAXI7)

Vessels are requested to pass at a safe speed and distance and fishing vessels are advised to remain a safe distance (approximately 1.5 nautical miles) from the areas identified. Guard Vessels have been deployed at each location to aid in monitoring the exposed areas and will advise of safe distances locally.

The vessels will monitor VHF Channel 16 at all times.



Figure 1 *PLIB Support vessel - Normand Pacific*

Post Lay Installation Burial (PLIB)

Along the Western Link HVDC cable route, exposed sections that have previously been communicated through notice to mariners will be reduced by completing PLIB works. The post protection methods selected for exposed sections vary along the route include PLIB works, rock placement and concrete mattressing. Post Lay Installation Burial (PLIB) works using a jetting tool have been planned in advance of the rock placement and concrete mattressing works for the exposed section of Campaign 3 and Campaign 6. The PLIB operations with the use of a subsea burial tool as indicated in Figure 2, will have restricted maneuverability as it completes its work scope.

Guard vessels which have previously been stationed to monitor the cable and provide advice to mariners following the cable laying will remain in position until the all of the post protection has been completed. In areas of service crossings the guard vessels will remain on location until the completion of mattressing or rock placement works.

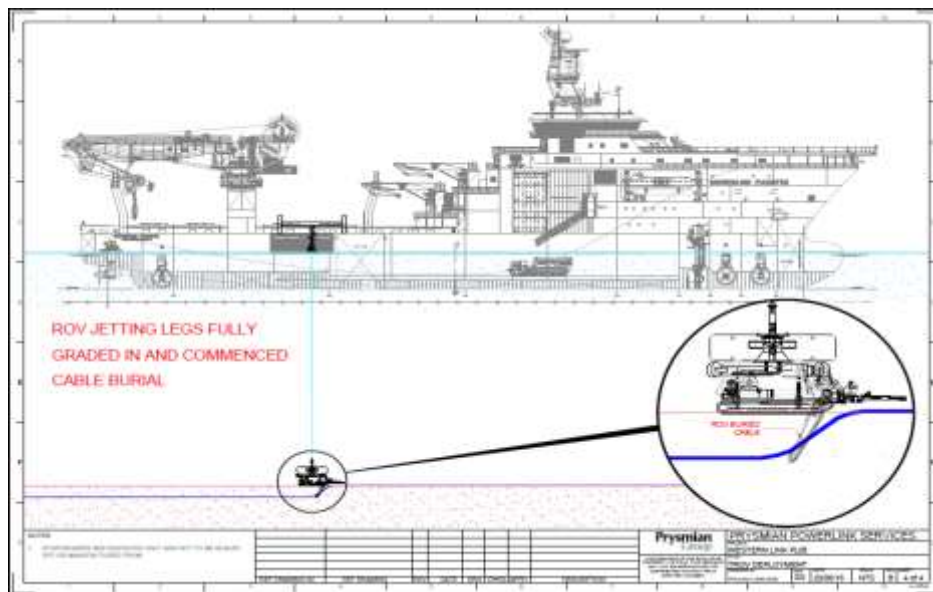


Figure 2 – PLIB arrangement

PLIB Works Overview

The locations of the exposed sections of Campaign 6 that will be protected by PLIB for Campaign 6 are shown in Table 1 of this Notice. Table 1 also shows the exposed sections for Campaign 3 that will be protected by Rock Placement within January 2017.

Table 1 – Exposed sections & Guard Vessel Locations for Campaign 3 and Campaign 6 in the North Channel and mouth of the Clyde.

		Patrolling Area				
		Coordinates - Campaign 3				
		KP	Easting	Northing	Latitude	Longitude
Guard Vessel 6	From					
	To					
	From	154.956	356103.85	6045875.61	54°32.397'N	5°13.457'W
	To	154.895	356114.58	6045935.65	54°32.430'N	5°13.449'W
	From					
	To					
	From					
	To					
	From					
	To					
Guard Vessel 7	From	138.340	351615.55	6061063.77	54°40.503'N	5°18.077'W
	To	138.010	351399.47	6061311.55	54°40.632'N	5°18.286'W
	From	136.689	351167.96	6062577.78	54°41.311'N	5°18.540'W
	To	136.292	350950.85	6062904.93	54°41.483'N	5°18.752'W
	From	135.634	350796.50	6063538.90	54°41.822'N	5°18.915'W
	To	134.938	350455.34	6064141.08	54°42.140'N	5°19.251'W
	From	131.766	348880.63	6066842.00	54°43.567'N	5°20.800'W
	To	130.933	348683.49	6067653.76	54°44.001'N	5°21.009'W
	From	123.463	343892.14	6073212.73	54°46.908'N	5°25.648'W
	To	121.624	342434.35	6074325.67	54°47.480'N	5°27.043'W
	From	120.379	341556.85	6075195.64	54°47.932'N	5°27.890'W
	To	119.308	340874.19	6076015.18	54°48.360'N	5°28.553'W
	From	117.861	340241.89	6077298.60	54°49.040'N	5°29.186'W
	To	117.291	339979.14	6077799.05	54°49.304'N	5°29.447'W
Guard Vessel 8	From					
	To					
	From	111.668	339370.44	6083311.93	54°52.262'N	5°30.199'W
	To	106.028	337814.47	6088474.28	54°55.013'N	5°31.827'W
	From	104.628	337185.93	6089721.78	54°55.673'N	5°32.457'W
	To	103.590	336720.88	6090644.62	54°56.161'N	5°32.923'W
	From	99.326	336932.53	6094748,74	54° 58.376' N	5° 32.865' W
	To	98.491	337552.67	6095306,72	54° 58.688' N	5° 32.303' W
From	97.971	337776.16	6095772,25	54° 58.944' N	5° 32.110' W	
To	96.700	338257.51	6096946,64	54° 59.586' N	5° 31.699' W	
Guard Vessel 9	From					
	To					
	From	96.900	338179,40	6096762,54	54°59.485'N	005°31.766'W
	To	94.970	339016,14	6098488,40	55°00.431'N	005°31.040'W
	From	93.553	339765,28	6099674,54	55°01.084'N	005°30.378'W
	To	92.620	340302,71	6100430,79	55°01.502'N	005°29.899'W
	From	92.300	340577,62	6100588,36	55°01.592'N	005°29.647'W
	To	91.720	341085,83	6100846,56	55°01.741'N	005°29.179'W
	From	90.419	341345,71	6102081,14	55°02.411'N	005°28.976'W
	To	90.185	341429,50	6102298,71	55°02.530'N	005°28.905'W
From	78.442	346086,72	6112678,63	55°08.209'N	005°24.873'W	
To	78.293	346147,29	6112814,74	55°08.284'N	005°24.820'W	
Guard Vessel 10	From					
	To					
	From					
	To					

		Patrolling Area				
		Coordinates - Campaign 6				
		KP	Easting	northing	Latitude	Longitude
Guard Vessel 6	From	176.031	354556.10	6026373.40	54°21.863 N	5°14.317 W
		175.834	354549.80	6026570.70	54°21.969 N	5°14.329 W
	To	159.925	356965.83	6041471.41	54°30.039 N	5°12.530 W
	From	155.502	356105.99	6045668.36	54°32.286 N	5°13.449 W
	To	155.433	356119.14	6045736.02	54°32.322 N	5°13.439 W
	From	154.280	356288.60	6046846.91	54°32.925 N	5°13.222 W
	To	154.230	356414.32	6046889.63	54°32.949 N	5°13.199 W
	From	147.212	354799.28	6053305.91	54°36.378 N	5°14.887 W
	To	147.188	354795.63	6053329.62	54°36.391 N	5°14.890 W
	From	145.963	354437.36	6054488.05	54°37.009 N	5°15.258 W
To	145.834	354412.50	6054614.62	54°37.077 N	5°15.285 W	
Guard Vessel 7	From					
	To					
	From	138.684	351663.29	6061065.01	54°40.504 N	5°18.033 W
	To	138.266	351386.86	6061355.70	54°40.656 N	5°18.299 W
	From	137.006	351190.60	6062577.03	54°41.310 N	5°18.518 W
	To	136.573	350969.60	6062923.86	54°41.493 N	5°18.735 W
	From	132.075	348904.19	6066846.47	54°43.569 N	5°20.778 W
	To	131.198	348709.84	6067668.62	54°44.009 N	5°20.984 W
	From	123.731	343928.63	6073231.79	54°46.919' N	5°25.615' W
	To	121.845	342444.03	6074352.19	54°47.494' N	5°27.035' W
	From	120.673	341609.74	6075167.77	54°47.918' N	5°27.840' W
	To	119.505	340874.71	6076043.98	54°48.376' N	5°28.554' W
From	118.096	340271.43	6077302.88	54°49.043' N	5°29.158' W	
To	117.475	339995.63	6077845.18	54°49.330' N	5°29.433' W	
Guard Vessel 8	From	113.475	339482,41	6081769,34	54°51.433 N	5°30.043 W
	To	112.967	339455,34	6082275,44	54°51.705 N	5°30.085 W
	From	111.923	339410,49	6083295,09	54°52.254 N	5°30.161 W
	To	106.245	337845,44	6088474,11	54°55.013 N	5°31.797 W
	From	104.863	337229,75	6089701,10	54°55.665 N	5°32.418 W
	To	103.749	336741,14	6090682,31	54°56.131 N	5°32.905 W
	From	99.625	336898,02	6094672,82	54°58.334 N	5°32.894 W
	To	98.640	337605,68	6095324,76	54°58.699 N	5°32.254 W
	From	98.215	337781,79	6095693,88	54°58.908 N	5°32.099 W
To	95.111	339053,35	6098487,69	55°00.431 N	5°31.005 W	
Guard Vessel 9	From	94.113	339585,88	6099318,27	55°00.889' N	5°30.533' W
	To	93.936	339672,06	6099458,86	55°00.972' N	5°30.453' W
	From	93.724	339784,95	6099639,60	55°01.070' N	5°30.355' N
	To	92.765	340305,99	6100409,75	55°01.492' N	5°29.893' N
	From	92.456	340575,15	6100557,72	55°01.575' N	5°29.648' N
	To	91.838	341113,29	6100833,85	55°01.732' N	5°29.157' W
	From	90.460	341398,33	6102137,13	55°02.442' N	5°28.929' W
	To	90.360	341440,04	6102227,86	55°02.492' N	5°28.893' W
	From	87.926	342540,08	6104363,22	55°03.663' N	5°27.931' N
	To	87.856	342577,99	6104422,09	55°03.695' N	5°27.898' N
	From	85.905	342862,30	6106203,11	55°04.658' N	5°27.690' W
	To	85.463	342915,27	6106598,45	55°04.874' N	5°27.653' W
Guard Vessel 10	From	76.700	346555,21	6113345,78	55°08,947' N	5°23,771' W
	To	55.800	361993,50	6128470,10	55°16.998'N	5°10.376'W
	From	55.800	361993,50	6128470,10	55°16.998'N	5°10.376'W
	To	55.590	362134,33	6128625,88	55°17.085'N	5°10.248'W

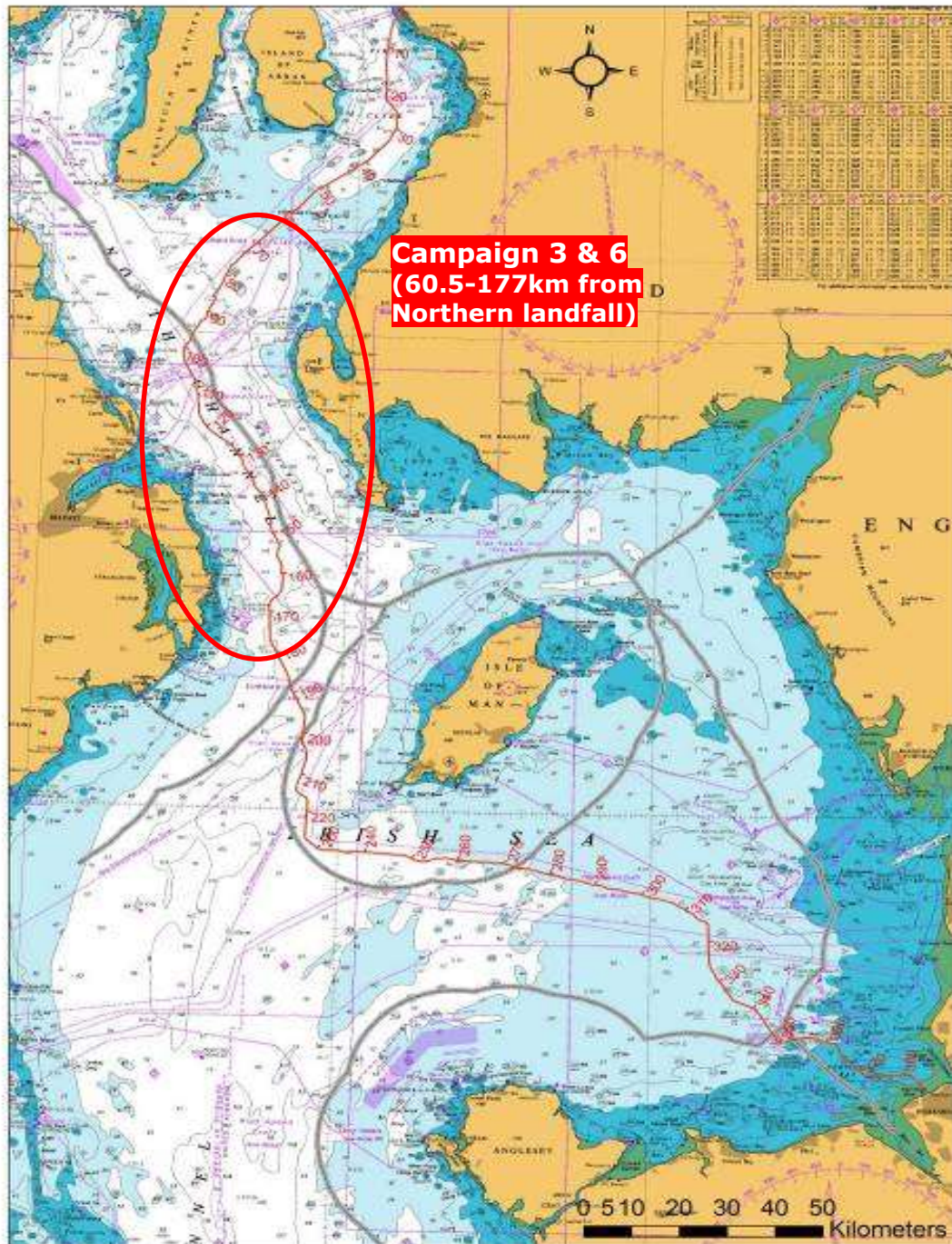


Figure 3 – Western Link cable route - Deep Water installation route and C3&C6 sections

Contact Details:

Further enquiries should be addressed to the following contacts:

AWJ Marine	Jim Andrews <i>(who will also coordinate the Fisheries liaison for this operation)</i> jim@awjmarine.co.uk Office: +44 (0) 845-880-2540, Mobile: +44 (0) 7908-225865,
Prysmian Project Manager	Alberto Pirovano alberto.pirovano@prysmiangroup.com Office: +39 02 6449 33590 Mobile: +39 335 5962819
Master of Normand Pacific	pacific.bridge@pacific.solstad.no VSAT: +47 52 85 60 70 SAT: +870 765 064 841

Distribution List:

abat@eircom.net
admin@welshsailing.org
Alan.Gibson@marinemanagement.org.uk
alana.murphy@rya.org.uk
alasdair.wilkie@hiberniaatlantic.com
Alec.Keep@mcga.gov.uk
andre.coccucio@mcga.gov.uk
andrew.sheen@irishferries.com
annette.stube@maersk.com
b.armstrong@sff.co.uk
barrowmc@abports.co.uk
bdeas@nffo.org.uk
blackpool@marinemanagement.org.uk
bryan.davies@heyshamport.com
businessdevelopmentdepartment3@wales.gsi.gov.uk
caroline.price@rya.org.uk, ,
CETI@Centrica.com
Charlie.Mawer@clydeport.co.uk
chris.clark@gov.im
christopherkeogh@transport.ie
'claire.storey@naturalengland.org.uk'
clive.lane@mcga.gov.uk
clyde.coastguard@mcga.gov.uk
colin.brown@mcga.gov.uk
colin.brown@mcga.gov.uk
crousing@rya.co.uk
d.obrien@cil.ie
dale.rodmeil@nffo.org.uk
MerseyMarineManagers@Peelports.com
danny.everitt@mscuk.com
dannymbrien@bge.ie
david.crowther@centrica.com
DEandT@wales.gsi.gov.uk
DeshWebCorrespondence@Wales.GSI.Gov.UK
dlw@seatruckgroup.co.uk
doe.iemonitoring@doeni.gov.uk
doug.percy@transsectormarine.co.uk
dtd@cumbriasfc.fsnet.co.uk
econsentsadmin@scotland.gsi.gov.uk
emmet.mcfadden@mutual-energy.com
emmet.mcfadden@mutual-energy.com
EnergyConsents@scotland.gsi.gov.uk
enquiries@drdni.gov.uk
erecra@talktalk.net
jon.ford@cw.com
jon.ford@vodafone.com
jonwarren@merseywharf.co.uk
josephanik@wirral.gov.uk
Joyce.johnson@mcga.gov.uk
keith.3.brooks@bt.com
keith.3.brooks@bt.com
keith.tatman@mcga.gov.uk
kenneth.poole@cemex.com
Kevin.Best@BHPBilliton.com
kingfisher@seafish.co.uk
liverpool_mo@mcga.gov.uk
lykup@dongenergy.co.uk
mail@liverpoolmarina.com
marine.operations.centre@gov.im
marine.team@bt.com
Mark.Wilber@external.eni.com
mark.woodward@steampacket.com
markthomas@wirral.gov.uk
maurice.smith@esbi.com
mdurcan@bge.ie
Michael.Brew@gov.im
michael.moore9@btinternet.com
mick.mcguickin@mutual-energy.com
MS.marinelicensing@scotland.gsi.gov.uk
n.lauder@sff.co.uk
natkinson@abports.co.uk
navigation.directorate@thls.org
navigation@nlb.org.uk
neil.wellum@marinemanagement.org.uk
nkelly@doehle-iom.com
norman.leece@mezeron.com
nridehalgh@abports.co.uk
'nwplanning@naturalengland.org.uk'
osbornted@aol.com
paul.o'rourke@eirgrid.com
paul.townsend@mcga.gov.uk
peter.hodgetts@thecrownestate.co.uk
peter.jamieson@virginmedia.co.uk
peter.jordan@sse.com
portcontrol@stenaline.com
robert.floyd@wales.gsi.gov.uk
Robert.Whiteley@naturalengland.org.uk
Ron.Bailey@clydeport.co.uk

fisheries@wales.gsi.gov.uk
Fleet.Operations@POferries.com
freighthelp@poferries.com
gedherby@wirral.gov.uk
graeme.proctor@mcga.gov.uk
Gurpal.Ghotra@mutual-energy.com
hannah.birtles@naturalengland.org.uk
hcdfiles@ukho.gov.uk
hdcf@ukho.gov.uk
hdcfiles@ukho.gov.uk
helen.elphick@thecrownestate.co.uk
holyheadcoastguard@mcga.gov.uk
hq@stratmarine.com
ian@dickies.co.uk
ianre@dongenergy.co.uk
info.uk@stenaline.com
info@clydeport.co.uk
info@mezeron.com
info@m-h-a.co.uk
info@rnli.org.uk
info@whitehavenhc.org.uk
information@detini.gov.uk
iomfishermen@manx.net
jim@awjmarine.co.uk
jmichel@north-ayrshire.gov.uk
john.bateman@shell.com
johnentwistle@wirral.gov.uk

s.alexander@sff.co.uk
s.atkins@nw-ifca.gov.uk
scalden@dsml.co.uk
sff@sff.co.uk
sprince@dsml.co.uk
stephen.hemphill@mutual-energy.com
steve.davie@xodusgroup.com
steve.gallimore@merseydocks.co.uk
Stevie.travis@mcga.gov.uk
stliv@dongenergy.co.uk
stuart.carruthers@rya.org.uk
Tariq.Amin@eni.com
tony@ramsey-steamship.com
vanoc@dongenergy.co.uk
vts.portoperations@merseydocks.co.uk
wag-en@mailuk.custhelp.com
walneytraffic@dongenergy.dk
will.calderbank@portofmostyn.com
WM.Belfast@mcga.gov.uk
WM.clyde@mcga.gov.uk
wm.holyhead@mcga.gov.uk
wm.liverpool@mcga.gov.uk
wm_holyhead@mcga.gov.uk
Wm_liverpool@mcga.gov.uk
wyn.parry@stenaline.com
XASCO@dongenergy.co.uk
xmrob@dongenergy.dk