

NOTICE TO MARINERS

Issue Date: 22nd November, 2016

Western Link Project

Deep water cables installation – Rock Protection Areas and Exposed cable sections

The Western Link Cable is being laid on the seabed between Hunterston in the Firth of Clyde and the Wirral. This notice provides an update on the location of rock protection areas along the parts of the cable route where construction work has been completed, and also the locations of exposed cable sections along parts of the cable route where installation work is on-going. The route of the cable is shown in Figure 1 of this notice.

Cable protection works are due to take place for the exposed areas of campaign 3 and campaign 6 during the period November 2016 – January 2017. Details of the vessels that will be used to carry out this protection work and the nature of this work is provided in a separate notice to mariners.

1. Rock Protection Areas: Liverpool Bay – South of Isle of Man (Campaigns 1 & 2)

Mariners are advised that following the Rock Placement works of Campaign 1 and Campaign 2 in the south have been completed and are outlined in **Table 1** below. Guard vessels will no longer be stationed on site as the exposed sections have been protected by the Rock Placement works.

Mariners are advised to take note of the location of the rock protection on the cable route. The height of the rock protection within the areas indicated is approximately 0.8m, and the rock berm has been designed to have a maximum 1:3 gradient. The rock berms may therefore extend approximately 3m either side of the cable.

2. Exposed Cable: North Channel - Clyde (Campaigns 3 & 6)

The exposed ends of Campaign 3 which were surface laid at the north end and south end of the cable have been buried by use of a jetting tool, other sections of exposed cable on Campaign 3 are however still present and detailed in **Table 2** below. Cable laying works of Campaign 6 have been completed and the exposed sections are also detailed in **Table 2** below.

This notice provide the full list of the sections of exposed cable including the planned cable crossing locations previously communicated through notices to mariners. These sections are currently being monitored by Guard Vessels which have been deployed locally.

Vessels are requested to pass at a safe speed and distance and fishing vessels are advised to remain a safe distance (approximately 1.5 nautical miles) from the areas identified in Table 2. Guard Vessels have been deployed at each location to aid in monitoring the exposed areas and will advise of safe distances locally.

Table 1 – Rock Placement Locations for Campaign 1 & Campaign 2 in Liverpool Bay and to the south of the Isle of Man.

		Coordinates - Campaign 2			
	RKP	Easting	Northing	Latitude	Longitude
From	35.644	462941,92	5931043,83	53° 31.620' N	3° 33.541' W
To	35.881	462743,34	5930917,85	53° 31.551' N	3° 33.720' W
From	61.439	446647,3	5948769,39	53° 41.095' N	3° 48.470' W
To	61.581	446620,2	5948908,29	53° 41.169' N	3° 48.497' W
From	63.830	446487,4	5951150,94	53° 42.378' N	3° 48.640' W
To	68.987	446299,4	5956302,61	53° 45.155' N	3° 48.865' W
From	75.293	443081,2	5960988,2	53° 47.661' N	3° 51.845' W
To	76.183	442365,3	5961338,9	53° 47.845' N	3° 52.501' W
From	76.932	441692,7	5961691,1	53° 48.031' N	3° 53,117' W
To	77.032	441618,1	5961757,6	53° 48,066' N	3° 53,186' W
From	79.008	439952,3	596766,6	53° 48,599' N	3° 54,715' W
To	79.101	439865,6	5962818,4	53° 48,626' N	3° 54,795' W
From	79.565	439488,2	5963088,0	53° 48,769' N	3° 55,142' W
To	79.752	439336,1	5963196,7	53° 48,826' N	3° 55,282' W
From	81.014	438243,7	5963797,7	53° 49.143' N	3° 56.284' W
To	81.304	437950,2	5963821,6	53° 49,153' N	3° 56,552' W
From	81.917	437374,3	5964039,3	53° 49.267' N	3° 57.080' W
To	86.312	433154,6	5965119,4	53° 49.818' N	4° 00.939' W
From	86.921	432594,4	5965340,9	53° 49.933' N	4° 01.453' W
To	87.056	432480,7	5965413,6	53° 49.971' N	4° 01.557' W
From	90.322	429331,2	5966143,6	53° 50.339' N	4° 04.438' W
To	92.527	427270,8	5966696,7	53° 50.621' N	004° 06.324' W
From	94.072	425770,2	5966921,8	53° 50.729' N	004° 07.696' W
To	94.355	425489,1	5966949,1	53° 50.742' N	004° 07.952' W
From	95.918	424051,0	5967485,7	53° 51.018' N	004° 09.272' W
To	95.998	423976,1	5967513,8	53° 51.033' N	004° 09.340' W
From	98.380	421657,6	5967921,1	53° 51.232' N	004° 11.461' W
To	99.032	421099,8	5968232,6	53° 51.395' N	004° 11.974' W
From	99.494	420663,9	5968380,1	53° 51.470' N	004° 12.374' W
To	99.596	420564,1	5968400,8	53° 51.480' N	004° 12.465' W
From	100.441	419740,1	5968575,8	53° 51.567' N	004° 13.220' W
To	100.708	419482,0	5968643,7	53° 51.601' N	004° 13.456' W
From	105.618	414812,4	5969973,5	53° 52.274' N	004° 17.737' W
To	108.854	411666,6	5970599,7	53° 52.580' N	004° 20.618' W
From	110.887	409752,7	5971234,8	53° 52.902' N	004° 22.375' W
To	113.575	407158,3	5971694,4	53° 53.123' N	004° 24.751' W
From	114.541	406216,9	5971869,7	53° 53.207' N	004° 25.613' W
To	114.775	405989,1	5971921,0	53° 53.232' N	004° 25.822' W

From	115.768	405069,9	5972291,6	53° 53.422' N	004° 26.668' W
To	116.658	404229,1	5972512,3	53° 53.532' N	004° 27.439' W
From	117.192	403722,7	5972680,3	53° 53.617' N	004° 27.905' W
To	117.719	403234,9	5972823,1	53° 53.688' N	004° 28.353' W
From	118.403	402555,79	5972860,9	53°53.701' N	004°28.973'W
To	118.840	402135,88	5972832,1	53°53.681' N	004°29.356'W
From	119.569	401408,09	5972828,5	53°53.671' N	004°30.021'W
To	120.662	400391,27	5973167,3	53°53.842' N	004°30.955'W
From	122.576	398480,0	5973173,9	53°53.823' N	004°32.670'W
To	123.733	397344,91	5973272,2	53°53.863' N	004°33.738'W
From	126.975	394154,05	5973631,5	53°54.018' N	004°36.658'W
To	127.939	393209,66	5973600,9	53°53.990' N	004°37.519'W
From	145.591	376119,28	5975379,8	53°54.720' N	004°53.160'W
To	145.606	376104,49	5975382,26	53°54.722' N	004°53.174'W

		Coordinates - Campaign 1			
	RKP	Easting	northing	Latitude	Longitude
From	35.644	462942	5931044	53° 31.620'N	003° 33.542'W
To	37.465	461204	5930877	53° 31.523'N	003° 35.113'W
From	40.493	459509,2	5933246,7	53°32.793'N	003°36.666'W
To	40.860	459322,69	5933563,74	53°32.963'N	003°36.837'W
From	63.823	446499,0	5951162,576	53°42.385'N	3°48.630'W
To	68.912	446313,9	5956233,149	53°45.118'N	3°48.851'W
From	81.045	438220,3	5963835,3	53°49.163'N	3°56.307'W
To	81.245	438027,1	5963886,7	53°49.190'N	3°56.483'W
From	83.050	436292,6	5964380,8	53°49.443'N	3°58.070'W
To	83.170	436177,8	5964415,9	53°49.462'N	3°58.175'W
From	83.877	435490,5	5964578,0	53°49.544'N	3°58.804'W
To	84.050	435319,2	5964602,4	53°49.556'N	3°58.960'W
From	84.610	434764,7	5964681,7	53°49.594'N	3°59.466'W
To	84.780	434596,4	5964705,7	53°49.606'N	3°59.620'W
From	85.500	433913,6	5964915,9	53°49.714'N	4°00.245'W
To	85.600	433822,0	5964956,0	53°49.735'N	4°00.329'W

From	90.290	429350,7	5966168,3	53° 50.353'N	4° 04.421'W
To	92.516	427246,3	5966725,1	53° 50.636'N	4° 06.348'W
From	94.008	425797,9	5966948,4	53° 50.744'N	4° 07.671'W
To	94.331	425477,9	5966979,8	53° 50.758'N	4° 07.964'W
From	98.339	421663,8	5967951,1	53° 51.249'N	4° 11.456'W
To	98.777	421279,2	5968158,7	53° 51.357'N	4° 11.810'W
From	99.442	420669,2	5968409,6	53° 51.487'N	4° 12.370'W
To	100.770	419376,7	5968700,9	53° 51.632'N	4° 13.554'W
From	105.933	414462,4	5970089,0	53°52.333'N	4°18.059'W
To	108.805	411655,4	5970633,5	53°52.598'N	4°20.629'W
From	112.255	408366,5	5971580,1	53°53.074'N	4°23.647'W
To	113.507	407135,5	5971723,0	53°53.138'N	4°24.773'W
From	115.688	405060,8	5972329,0	53°53.443'N	4°26.677'W
To	116.571	404208,2	5972548,2	53°53.551'N	4°27.460'W
From	117.060	403745,5	5972704,4	53°53.630'N	4°27.855'W
To	117.588	403239,1	5972853,0	53°53.705'N	4°28.350'W
From	117.688	403142,0	5972876,9	53°53.717'N	4°28.439'W
To	117.838	402994,6	5972897,4	53°53.726'N	4°28.574'W
From	118.264	402568,2	5972891,9	53°53.718'N	4°28.963'W
To	118.727	402106,3	5972861,6	53°53.697'N	4°29.384'W
From	119.412	401422,5	5972855,3	53°53.686'N	4°30.008'W
To	120.519	400379,3	5973197,7	53°53.858'N	4°30.967'W
From	120.638	400261,4	5973196,1	53°53,856'N	4°31,074'W
To	120.837	400063,3	5973186,3	53°53,848'N	4°31,255'W
From	122.415	398490,0	5973202,2	53°53,839'N	4°32,691'W
To	123.640	397307,6	5973297,7	53°53,876'N	4°33,773' W
From	125.415	395507,5	5973386,3	53°53.902' N	4°35.418' W
To	125.648	395277,6	5973424,2	53°53.920' N	4°35.628' W
From	126.798	394159,8	5973661,8	53°54.034' N	4°36.653' W
To	127.798	393178,3	5973637,2	53°54.009' N	4°37.549' W

Table 2 – Exposed sections & Guard Vessel Locations for Campaign 3 & 6 in the North Channel and mouth of the Clyde.

		Patrolling Area				
		Coordinates - Campaign 3				
		KP	Easting	Northing	Latitude	Longitude
Guard Vessel 6	From					
	To					
	From	154.956	356103.85	6045875.61	54°32.397'N	5°13.457'W
	To	154.895	356114.58	6045935.65	54°32.430'N	5°13.449'W
	From					
	To					
	From					
	To					
	From					
	To					
Guard Vessel 7	From	138.340	351615.55	6061063.77	54°40.503'N	5°18.077'W
	To	138.010	351399.47	6061311.55	54°40.632'N	5°18.286'W
	From	136.689	351167.96	6062577.78	54°41.311'N	5°18.540'W
	To	136.292	350950.85	6062904.93	54°41.483'N	5°18.752'W
	From	135.634	350796.50	6063538.90	54°41.822'N	5°18.915'W
	To	134.938	350455.34	6064141.08	54°42.140'N	5°19.251'W
	From	131.766	348880.63	6066842.00	54°43.567'N	5°20.800'W
	To	130.933	348683.49	6067653.76	54°44.001'N	5°21.009'W
	From	123.463	343892.14	6073212.73	54°46.908'N	5°25.648'W
	To	121.624	342434.35	6074325.67	54°47.480'N	5°27.043'W
	From	120.379	341556.85	6075195.64	54°47.932'N	5°27.890'W
	To	119.308	340874.19	6076015.18	54°48.360'N	5°28.553'W
	From	117.861	340241.89	6077298.60	54°49.040'N	5°29.186'W
	To	117.291	339979.14	6077799.05	54°49.304'N	5°29.447'W
Guard Vessel 8	From					
	To					
	From	111.668	339370.44	6083311.93	54°52.262'N	5°30.199'W
	To	106.028	337814.47	6088474.28	54°55.013'N	5°31.827'W
	From	104.628	337185.93	6089721.78	54°55.673'N	5°32.457'W
	To	103.590	336720.88	6090644.62	54°56.161'N	5°32.923'W
	From	99.326	336932.53	6094748,74	54° 58.376' N	5° 32.865' W
	To	98.491	337552.67	6095306,72	54° 58.688' N	5° 32.303' W
	From	97.971	337776.16	6095772,25	54° 58.944' N	5° 32.110' W
	To	96.700	338257.51	6096946,64	54° 59.586' N	5° 31.699' W
Guard Vessel 9	From					
	To					
	From	96.900	338179,40	6096762,54	54°59.485'N	005°31.766'W
	To	94.970	339016,14	6098488,40	55°00.431'N	005°31.040'W
	From	93.553	339765,28	6099674,54	55°01.084'N	005°30.378'W
	To	92.620	340302,71	6100430,79	55°01.502'N	005°29.899'W
	From	92.300	340577,62	6100588,36	55°01.592'N	005°29.647'W
	To	91.720	341085,83	6100846,56	55°01.741'N	005°29.179'W
	From	90.419	341345,71	6102081,14	55°02.411'N	005°28.976'W
	To	90.185	341429,50	6102298,71	55°02.530'N	005°28.905'W
	From	78.442	346086,72	6112678,63	55°08.209'N	005°24.873'W
	To	78.293	346147,29	6112814,74	55°08.284'N	005°24.820'W
Guard Vessel 10	From					
	To					
	From					
	To					

		Patrolling Area				
		Coordinates - Campaign 6				
		KP	Easting	northing	Latitude	Longitude
Guard Vessel 6	From	176.031	354556.10	6026373.40	54°21.863 N	5°14.317 W
		175.834	354549.80	6026570.70	54°21.969 N	5°14.329 W
	To	159.925	356965.83	6041471.41	54°30.039 N	5°12.530 W
	From	155.502	356105.99	6045668.36	54°32.286 N	5°13.449 W
	To	155.433	356119.14	6045736.02	54°32.322 N	5°13.439 W
	From	154.280	356288.60	6046846.91	54°32.925 N	5°13.222 W
	To	154.230	356414.32	6046889.63	54°32.949 N	5°13.199 W
	From	147.212	354799.28	6053305.91	54°36.378 N	5°14.887 W
	To	147.188	354795.63	6053329.62	54°36.391 N	5°14.890 W
	From	145.963	354437.36	6054488.05	54°37.009 N	5°15.258 W
To	145.834	354412.50	6054614.62	54°37.077 N	5°15.285 W	
Guard Vessel 7	From					
	To					
	From	138.684	351663.29	6061065.01	54°40.504 N	5°18.033 W
	To	138.266	351386.86	6061355.70	54°40.656 N	5°18.299 W
	From	137.006	351190.60	6062577.03	54°41.310 N	5°18.518 W
	To	136.573	350969.60	6062923.86	54°41.493 N	5°18.735 W
	From	132.075	348904.19	6066846.47	54°43.569 N	5°20.778 W
	To	131.198	348709.84	6067668.62	54°44.009 N	5°20.984 W
	From	123.731	343928.63	6073231.79	54°46.919' N	5°25.615' W
	To	121.845	342444.03	6074352.19	54°47.494' N	5°27.035' W
	From	120.673	341609.74	6075167.77	54°47.918' N	5°27.840' W
	To	119.505	340874.71	6076043.98	54°48.376' N	5°28.554' W
From	118.096	340271.43	6077302.88	54°49.043' N	5°29.158' W	
To	117.475	339995.63	6077845.18	54°49.330' N	5°29.433' W	
Guard Vessel 8	From	113.475	339482,41	6081769,34	54°51.433 N	5°30.043 W
	To	112.967	339455,34	6082275,44	54°51.705 N	5°30.085 W
	From	111.923	339410,49	6083295,09	54°52.254 N	5°30.161 W
	To	106.245	337845,44	6088474,11	54°55.013 N	5°31.797 W
	From	104.863	337229,75	6089701,10	54°55.665 N	5°32.418 W
	To	103.749	336741,14	6090682,31	54°56.131 N	5°32.905 W
	From	99.625	336898,02	6094672,82	54°58.334 N	5°32.894 W
	To	98.640	337605,68	6095324,76	54°58.699 N	5°32.254 W
	From	98.215	337781,79	6095693,88	54°58.908 N	5°32.099 W
To	95.111	339053,35	6098487,69	55°00.431 N	5°31.005 W	
Guard Vessel 9	From	94.113	339585,88	6099318,27	55°00.889' N	5°30.533' W
	To	93.936	339672,06	6099458,86	55°00.972' N	5°30.453' W
	From	93.724	339784,95	6099639,60	55°01.070' N	5°30.355' N
	To	92.765	340305,99	6100409,75	55°01.492' N	5°29.893' N
	From	92.456	340575,15	6100557,72	55°01.575' N	5°29.648' N
	To	91.838	341113,29	6100833,85	55°01.732' N	5°29.157' W
	From	90.460	341398,33	6102137,13	55°02.442' N	5°28.929' W
	To	90.360	341440,04	6102227,86	55°02.492' N	5°28.893' W
	From	87.926	342540,08	6104363,22	55°03.663' N	5°27.931' N
	To	87.856	342577,99	6104422,09	55°03.695' N	5°27.898' N
	From	85.905	342862,30	6106203,11	55°04.658' N	5°27.690' W
	To	85.463	342915,27	6106598,45	55°04.874' N	5°27.653' W
Guard Vessel 10	From	76.700	346555,21	6113345,78	55°08,947' N	5°23,771' W
	To	55.800	361993,50	6128470,10	55°16.998'N	5°10.376'W
	From	55.800	361993,50	6128470,10	55°16.998'N	5°10.376'W
	To	55.590	362134,33	6128625,88	55°17.085'N	5°10.248'W

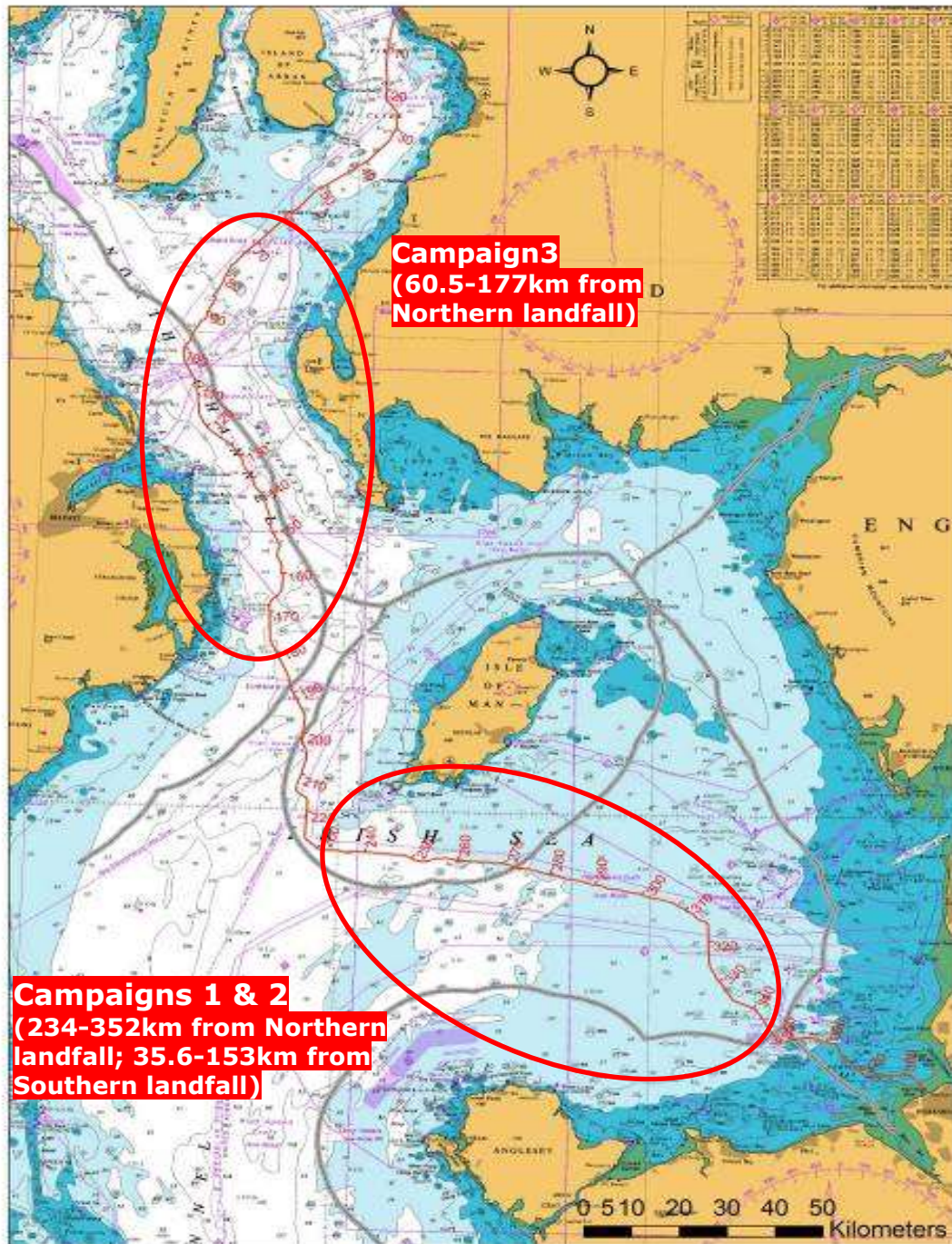


Figure 1 – Western Link cable route - Deep Water installation sections & campaigns

Contact Details:

Further enquiries should be addressed to the following contacts:

AWJ Marine

Jim Andrews
(who will also coordinate the Fisheries liaison for this operation)
jim@awjmarine.co.uk
Office: +44 (0) 845-880-2540,
Mobile: +44 (0) 7908-225865,

Prysmian Project Manager

Alberto Pirovano
alberto.pirovano@prysmiangroup.com
Office: +39 02 6449 33590
Mobile: +39 335 5962819

Distribution List:

abat@eircom.net
admin@welshsailing.org
Alan.Gibson@marinemanagement.org.uk
alana.murphy@rya.org.uk
alasdair.wilkie@hiberniaatlantic.com
Alec.keep@mcga.gov.uk
andre.coccucio@mcga.gov.uk
andrew.sheen@irishferries.com
annette.stube@maersk.com
b.armstrong@sff.co.uk
barrowmc@abports.co.uk
bdeas@nffo.org.uk
blackpool@marinemanagement.org.uk
bryan.davies@heyshamport.com
businessdevelopmentdepartment3@wales.gsi.gov.uk
caroline.price@rya.org.uk, ,
CETI@Centrica.com
Charlie.Mawer@clydeport.co.uk
chris.clark@gov.im
christopherkeogh@transport.ie
'claire.storey@naturalengland.org.uk'
clive.lane@mcga.gov.uk
clyde.coastguard@mcga.gov.uk
colin.brown@mcga.gov.uk
colin.brown@mcga.gov.uk
crousing@rya.co.uk
d.obrien@cil.ie
dale.rodmeil@nffo.org.uk
MerseyMarineManagers@Peelports.com
danny.everitt@mscuk.com
dannymbrien@bge.ie
david.crowther@centrica.com
DEandT@wales.gsi.gov.uk
DeshWebCorrespondence@Wales.GSI.Gov.UK
dlw@seatruckgroup.co.uk
doe.iemonitoring@doeni.gov.uk
doug.percy@transsectormarine.co.uk
dtd@cumbriasfc.fsnet.co.uk
econsentsadmin@scotland.gsi.gov.uk
emmet.mcfadden@mutual-energy.com
emmet.mcfadden@mutual-energy.com
EnergyConsents@scotland.gsi.gov.uk
enquiries@drdni.gov.uk
erecra@talktalk.net
jon.ford@cw.com
jon.ford@vodafone.com
jonwarren@merseywharf.co.uk
josephanik@wirral.gov.uk
Joyce.johnson@mcga.gov.uk
keith.3.brooks@bt.com
keith.3.brooks@bt.com
keith.tatman@mcga.gov.uk
kenneth.poole@cemex.com
Kevin.Best@BHPBilliton.com
kingfisher@seafish.co.uk
liverpool_mo@mcga.gov.uk
lykup@dongenergy.co.uk
mail@liverpoolmarina.com
marine.operations.centre@gov.im
marine.team@bt.com
Mark.Wilber@external.eni.com
mark.woodward@steampacket.com
markthomas@wirral.gov.uk
maurice.smith@esbi.com
mdurcan@bge.ie
Michael.Brew@gov.im
michael.moore9@btinternet.com
mick.mcguickin@mutual-energy.com
MS.marinelicensing@scotland.gsi.gov.uk
n.lauder@sff.co.uk
natkinson@abports.co.uk
navigation.directorate@thls.org
navigation@nlb.org.uk
neil.wellum@marinemanagement.org.uk
nkelly@doehle-iom.com
norman.leece@mezeron.com
nridehalgh@abports.co.uk
'nwplanning@naturalengland.org.uk'
osbornted@aol.com
paul.o'rourke@eirgrid.com
paul.townsend@mcga.gov.uk
peter.hodgetts@thecrownestate.co.uk
peter.jamieson@virginmedia.co.uk
peter.jordan@sse.com
portcontrol@stenaline.com
robert.floyd@wales.gsi.gov.uk
Robert.Whiteley@naturalengland.org.uk
Ron.Bailey@clydeport.co.uk

fisheries@wales.gsi.gov.uk
Fleet.Operations@POferries.com
freighthelp@poferries.com
gedherby@wirral.gov.uk
graeme.proctor@mcga.gov.uk
Gurpal.Ghotra@mutual-energy.com
hannah.birtles@naturalengland.org.uk
hcdfiles@ukho.gov.uk
hdcf@ukho.gov.uk
hdcfiles@ukho.gov.uk
helen.elphick@thecrownestate.co.uk
holyheadcoastguard@mcga.gov.uk
hq@stratmarine.com
ian@dickies.co.uk
ianre@dongenergy.co.uk
info.uk@stenaline.com
info@clydeport.co.uk
info@mezeron.com
info@m-h-a.co.uk
info@rnli.org.uk
info@whitehavenhc.org.uk
information@detini.gov.uk
iomfishermen@manx.net
jim@awjmarine.co.uk
jmichel@north-ayrshire.gov.uk
john.bateman@shell.com
johnentwistle@wirral.gov.uk

s.alexander@sff.co.uk
s.atkins@nw-ifca.gov.uk
scalden@dsml.co.uk
sff@sff.co.uk
sprince@dsml.co.uk
stephen.hemphill@mutual-energy.com
steve.davie@xodusgroup.com
steve.gallimore@merseydocks.co.uk
Stevie.travis@mcga.gov.uk
stliv@dongenergy.co.uk
stuart.carruthers@rya.org.uk
Tariq.Amin@eni.com
tony@ramsey-steamship.com
vanoc@dongenergy.co.uk
vts.portoperations@merseydocks.co.uk
wag-en@mailuk.custhelp.com
walneytraffic@dongenergy.dk
will.calderbank@portofmostyn.com
WM.Belfast@mcga.gov.uk
WM.clyde@mcga.gov.uk
wm.holyhead@mcga.gov.uk
wm.liverpool@mcga.gov.uk
wm_holyhead@mcga.gov.uk
Wm_liverpool@mcga.gov.uk
wyn.parry@stenaline.com
XASCO@dongenergy.co.uk
xmrob@dongenergy.dk