

# NOTICE TO MARINERS

Issue Date: 20<sup>th</sup> September, 2016

## Western Link Project

### Deep water cable Post Lay Installation Rock Placement Works

Mariners are advised that the Rock Placement works for the exposed cable sections previously communicated for deep water installation campaign 1 and campaign 2 is planned to commence late September 2016 with completion expected in October 2016.

The Rock Placement work is being carried out by Van Oord using the rock placement vessel **Nordnes** (IMO 9229910; Call Sign PHOG).

**Vessels are requested to pass at a safe speed and distance and fishing vessels are advised to remain a safe distance (approximately 1.5 nautical miles) from the areas identified. Guard Vessels have been deployed at each location to aid in monitoring the exposed areas and advise of safe distances locally.**

**The vessels will monitor VHF Channel 16 at all times.**



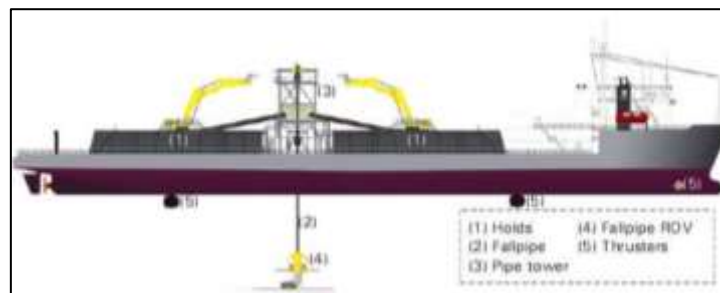
*Rock Placement vessel - Nordnes*

### Rock Placement

Along the Western Link HVDC cable route, exposed sections of campaign 1 and 2 previously communicated through notice to mariners, have been reduced in length by completing Post Lay Installation Burial (PLIB) works. Such sections will be now post protected by rock placement.

Following the completion of campaign 1 and 2 installation and PLIB works in the southern part of the route the Rock Placement vessel **Nordnes** will now commence the operations on this paired section of the route, making use of a subsea burial tool as indicated in Figure 2. The vessel will have restricted manoeuvrability as it completes its work scope.

Guard vessels which have previously been stationed to monitor the cable and provide advice to mariners following the cable laying, will remain in position until all of the post protection has been completed. In areas of service crossings the guard vessels will remain on location until the completion or rock placement works.



**Figure 2 – Rock Placement arrangement**

### **Rock Placement Works Overview**

The locations of the exposed sections that will be protected by rock placement are shown in Table 1 of this Notice.

**Table 1 – Exposed sections & Guard Vessel Locations for Campaign 1 & Campaign 2 cable lengths in Liverpool Bay and to the south of the Isle of Man.**

		Patrolling Area										
		Coordinates - Pole 1					Coordinates - Pole 2					
		RKP	Easting	Northing	Latitude	Longitude	RKP	Easting	northing	Latitude	Longitude	
Guard Vessel 1	From	35.644	462941,92	5931043,83	53° 31.620' N	3° 33.541' W	From	35.644	462942	5931044	53° 31.620' N	003° 33.542' W
	To	35.881	462743,34	5930917,85	53° 31.551' N	3° 33.720' W	To	37.465	461204	5930877	53° 31.523' N	003° 35.113' W
	From						From	40.493	459509,2	5933246,7	53° 32.793' N	003° 36.666' W
	To						To	40.860	459322,69	5933563,74	53° 32.963' N	003° 36.837' W
	From	61.439	446647,3	5948769,39	53° 41.095' N	3° 48.470' W						
	To	61.581	446620,2	5948908,29	53° 41.169' N	3° 48.497' W						
	From	63.830	446487,4	5951150,94	53° 42.378' N	3° 48.640' W	From	63.823	446499,0	5951162,576	53° 42.385' N	3° 48.630' W
	To	68.987	446299,4	5956302,61	53° 45.155' N	3° 48.865' W	To	68.912	446313,9	5956233,149	53° 45.118' N	3° 48.851' W
	From	75.293	443081,2	5960988,2	53° 47.661' N	3° 51.845' W						
	To	76.183	442365,3	5961338,9	53° 47.845' N	3° 52.501' W						
	From	76.932	441692,7	5961691,1	53° 48.031' N	3° 53.117' W						
	To	77.032	441618,1	5961757,6	53° 48.066' N	3° 53.186' W						
	From	79.008	439952,3	596766,6	53° 48.599' N	3° 54.715' W						
	To	79.101	439865,6	5962818,4	53° 48.626' N	3° 54.795' W						
	From	79.565	439488,2	5963088,0	53° 48.769' N	3° 55.142' W						
	To	79.752	439336,1	5963196,7	53° 48.826' N	3° 55.282' W						
	From	81.014	438243,7	5963797,7	53° 49.143' N	3° 56.284' W						
	To	81.304	437950,2	5963821,6	53° 49.153' N	3° 56.552' W						
	From						From	81.045	438220,3	5963835,3	53° 49.163' N	3° 56.307' W
	To						To	81.245	438027,1	5963886,7	53° 49.190' N	3° 56.483' W
	From	81.917	437374,3	5964039,3	53° 49.267' N	3° 57.080' W	From	83.050	436292,6	5964380,8	53° 49.443' N	3° 58.070' W
	To						To	83.170	436177,8	5964415,9	53° 49.462' N	3° 58.175' W
	From						From	83.877	435490,5	5964578,0	53° 49.544' N	3° 58.804' W
	To						To	84.050	435319,2	5964602,4	53° 49.556' N	3° 58.960' W
	From						From	84.610	434764,7	5964681,7	53° 49.594' N	3° 59.466' W
	To						To	84.780	434596,4	5964705,7	53° 49.606' N	3° 59.620' W
	From						From	85.500	433913,6	5964915,9	53° 49.714' N	4° 00.245' W
	To						To	85.600	433822,0	5964956,0	53° 49.735' N	4° 00.329' W
	From	86.921	432594,4	5965340,9	53° 49.933' N	4° 01.453' W						
	To	87.056	432480,7	5965413,6	53° 49.971' N	4° 01.557' W						
	From	90.322	429331,2	5966143,6	53° 50.339' N	4° 04.438' W	From	90.290	429350,7	5966168,3	53° 50.353' N	4° 04.421' W
	To	92.527	427270,8	5966696,7	53° 50.621' N	004° 06.324' W	To	92.516	427246,3	5966725,1	53° 50.636' N	4° 06.348' W
	From	94.072	425770,2	5966921,8	53° 50.729' N	004° 07.696' W	From	94.008	425797,9	5966948,4	53° 50.744' N	4° 07.671' W
	To	94.355	425489,1	5966949,1	53° 50.742' N	004° 07.952' W	To	94.331	425477,9	5966979,8	53° 50.758' N	4° 07.964' W
	From	95.918	424051,0	5967485,7	53° 51.018' N	004° 09.272' W						
	To	95.998	423976,1	5967513,8	53° 51.033' N	004° 09.340' W						
	From	98.380	421657,6	5967921,1	53° 51.232' N	004° 11.461' W	From	98.339	421663,8	5967951,1	53° 51.249' N	4° 11.456' W
	To	99.032	421099,8	5968232,6	53° 51.395' N	004° 11.974' W	To	98.777	421279,2	5968158,7	53° 51.357' N	4° 11.810' W
	From	99.494	420663,9	5968380,1	53° 51.470' N	004° 12.374' W	From	99.442	420669,2	5968409,6	53° 51.487' N	4° 12.370' W
	To	99.596	420564,1	5968400,8	53° 51.480' N	004° 12.465' W	To	100.770	419376,7	5968700,9	53° 51.632' N	4° 13.554' W
	From	100.441	419740,1	5968575,8	53° 51.567' N	004° 13.220' W						
	To	100.708	419482,0	5968643,7	53° 51.601' N	004° 13.456' W						
	From	105.618	414812,4	5969973,5	53° 52.274' N	004° 17.737' W	From	105.933	414462,4	5970089,0	53° 52.333' N	4° 18.059' W
	To	108.854	411666,6	5970599,7	53° 52.580' N	004° 20.618' W	To	108.805	411655,4	5970633,5	53° 52.598' N	4° 20.629' W
	From	110.887	409752,7	5971234,8	53° 52.902' N	004° 22.375' W	From	112.255	408366,5	5971580,1	53° 53.074' N	4° 23.647' W
	To	113.575	407158,3	5971694,4	53° 53.123' N	004° 24.751' W	To	113.507	407135,5	5971723,0	53° 53.138' N	4° 24.773' W
	From	114.541	406216,9	5971869,7	53° 53.207' N	004° 25.613' W						
	To	114.775	405989,1	5971921,0	53° 53.232' N	004° 25.822' W						
	From	115.768	405069,9	5972291,6	53° 53.422' N	004° 26.668' W	From	115.688	405060,8	5972329,0	53° 53.443' N	4° 26.677' W
	To	116.658	404229,1	5972512,3	53° 53.532' N	004° 27.439' W	To	116.571	404208,2	5972548,2	53° 53.551' N	4° 27.460' W
	From	117.192	403722,7	5972680,3	53° 53.617' N	004° 27.905' W	From	117.060	403745,5	5972704,4	53° 53.630' N	4° 27.855' W
	To	117.719	403234,9	5972823,1	53° 53.688' N	004° 28.353' W	To	117.588	403239,1	5972853,0	53° 53.705' N	4° 28.350' W
	From						From	117.688	403142,0	5972876,9	53° 53.717' N	4° 28.439' W
	To						To	117.838	402994,6	5972897,4	53° 53.726' N	4° 28.574' W
	From	118.403	402555,79	5972860,9	53° 53.701' N	004° 28.973' W	From	118.264	402568,2	5972891,9	53° 53.718' N	4° 28.963' W
	To	118.840	402135,88	5972832,1	53° 53.681' N	004° 29.356' W	To	118.727	402106,3	5972861,6	53° 53.697' N	4° 29.384' W
	From	119.569	401408,09	5972828,5	53° 53.671' N	004° 30.021' W	From	119.412	401422,5	5972853,3	53° 53.686' N	4° 30.008' W
	To	120.662	400391,27	5973167,3	53° 53.842' N	004° 30.955' W	To	120.519	400379,3	5973197,7	53° 53.858' N	4° 30.967' W
	From						From	120.638	400261,4	5973196,1	53° 53.856' N	4° 31.074' W
	To						To	120.837	400063,3	5973186,3	53° 53.848' N	4° 31.255' W
	From	122.576	398490,0	5973173,9	53° 53.823' N	004° 32.670' W	From	122.415	398490,0	5973202,2	53° 53.839' N	4° 32.691' W
	To	123.733	397344,91	5973272,2	53° 53.863' N	004° 33.738' W	To	123.640	397307,6	5973297,7	53° 53.876' N	4° 33.773' W
	From						From	125.415	395507,9	5973386,2	53° 53.902' N	4° 35.417' W
	To						To	126.145	394798,2	5973555,7	53° 53.985' N	4° 36.068' W
	From	126.975	394154,05	5973631,5	53° 54.018' N	004° 36.668' W						
	To	127.939	393209,66	5973600,9	53° 53.990' N	004° 37.519' W						
Guard Vessel 5	From	145.591	376119,28	5975379,8	53° 54.720' N	004° 53.160' W						
	To	145.606	376104,49	5975382,26	53° 54.722' N	004° 53.174' W						

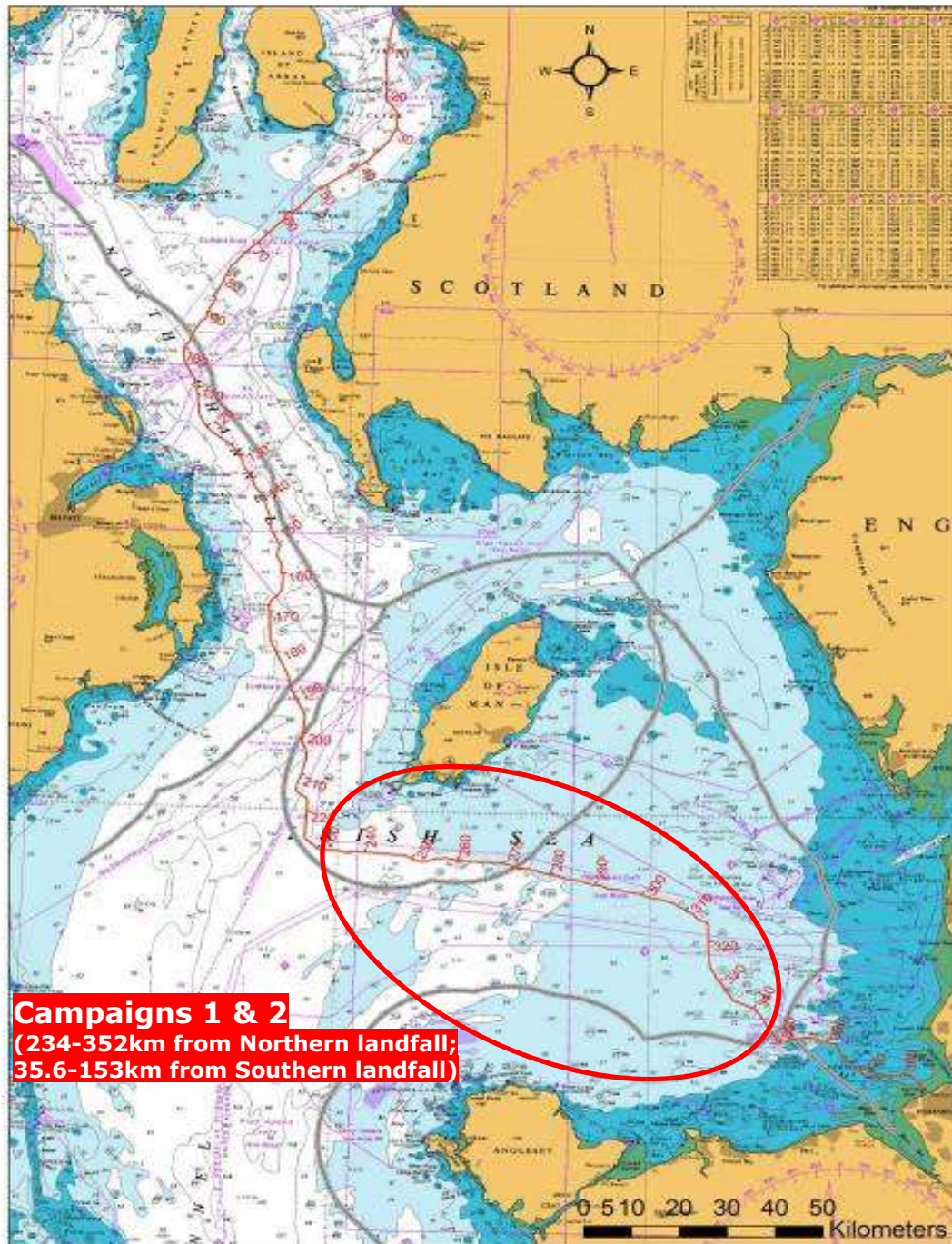


Figure 1 – Western Link cable route - Deep Water installation sections & campaigns

### Contact Details:

Further enquiries should be addressed to the following contacts:

AWJ Marine	Jim Andrews <i>(who will also coordinate the Fisheries liaison for this operation)</i> <a href="mailto:jim@awjmarine.co.uk">jim@awjmarine.co.uk</a> Office: +44 (0) 845-880-2540, Mobile: +44 (0) 7908-225865,
Prysmian Project Manager	Alberto Pirovano <a href="mailto:alberto.pirovano@prysmiangroup.com">alberto.pirovano@prysmiangroup.com</a> Office: +39 02 6449 33590 Mobile: +39 335 5962819
Master of Nordnes	<a href="mailto:0615.cpt@vanoord.com">0615.cpt@vanoord.com</a> Tel: +31 888 26 3830 Sat: +47 917 22 508

## Distribution List:

abat@eircom.net  
admin@welshsailing.org  
Alan.Gibson@marinemanagement.org.uk  
alana.murphy@rya.org.uk  
alasdair.wilkie@hiberniaatlantic.com  
Alec.Keep@mcga.gov.uk  
andre.coccucio@mcga.gov.uk  
andrew.sheen@irishferries.com  
annette.stube@maersk.com  
b.armstrong@sff.co.uk  
barrowmc@abports.co.uk  
bdeas@nffo.org.uk  
blackpool@marinemanagement.org.uk  
bryan.davies@heyshamport.com  
businessdevelopmentdepartment3@wales.gsi.gov.uk  
caroline.price@rya.org.uk, ,  
CETI@Centrica.com  
Charlie.Mawer@clydeport.co.uk  
chris.clark@gov.im  
christopherkeogh@transport.ie  
'claire.storey@naturalengland.org.uk'  
clive.lane@mcga.gov.uk  
clyde.coastguard@mcga.gov.uk  
colin.brown@mcga.gov.uk  
colin.brown@mcga.gov.uk  
crousing@rya.co.uk  
d.obrien@cil.ie  
dale.rodmeil@nffo.org.uk  
MerseyMarineManagers@Peelports.com  
danny.everitt@mscuk.com  
dannymbrien@bge.ie  
david.crowther@centrica.com  
DEandT@wales.gsi.gov.uk  
DeshWebCorrespondence@Wales.GSI.Gov.UK  
dlw@seatruckgroup.co.uk  
doe.iemonitoring@doeni.gov.uk  
doug.percy@transsectormarine.co.uk  
dtd@cumbriasfc.fsnet.co.uk  
econsentsadmin@scotland.gsi.gov.uk  
emmet.mcfadden@mutual-energy.com  
emmet.mcfadden@mutual-energy.com  
EnergyConsents@scotland.gsi.gov.uk  
enquiries@drdni.gov.uk  
erecra@talktalk.net  
jon.ford@cw.com  
jon.ford@vodafone.com  
jonwarren@merseywharf.co.uk  
josephanik@wirral.gov.uk  
Joyce.johnson@mcga.gov.uk  
keith.3.brooks@bt.com  
keith.3.brooks@bt.com  
keith.tatman@mcga.gov.uk  
kenneth.poole@cemex.com  
Kevin.Best@BHPBilliton.com  
kingfisher@seafish.co.uk  
liverpool\_mo@mcga.gov.uk  
lykup@dongenergy.co.uk  
mail@liverpoolmarina.com  
marine.operations.centre@gov.im  
marine.team@bt.com  
Mark.Wilber@external.eni.com  
mark.woodward@steampacket.com  
markthomas@wirral.gov.uk  
maurice.smith@esbi.com  
mdurcan@bge.ie  
Michael.Brew@gov.im  
michael.moore9@btinternet.com  
mick.mcguickin@mutual-energy.com  
MS.marinelicensing@scotland.gsi.gov.uk  
n.lauder@sff.co.uk  
natkinson@abports.co.uk  
navigation.directorate@thls.org  
navigation@nlb.org.uk  
neil.wellum@marinemanagement.org.uk  
nkelly@doehle-iom.com  
norman.leece@mezeron.com  
nridehalgh@abports.co.uk  
'nwplanning@naturalengland.org.uk'  
osbornted@aol.com  
paul.o'rourke@eirgrid.com  
paul.townsend@mcga.gov.uk  
peter.hodgetts@thecrownestate.co.uk  
peter.jamieson@virginmedia.co.uk  
peter.jordan@sse.com  
portcontrol@stenaline.com  
robert.floyd@wales.gsi.gov.uk  
Robert.Whiteley@naturalengland.org.uk  
Ron.Bailey@clydeport.co.uk

fisheries@wales.gsi.gov.uk  
Fleet.Operations@POferries.com  
freighthelp@poferries.com  
gedherby@wirral.gov.uk  
graeme.proctor@mcga.gov.uk  
Gurpal.Ghotra@mutual-energy.com  
hannah.birtles@naturalengland.org.uk  
hcdfiles@ukho.gov.uk  
hdcf@ukho.gov.uk  
hdcfiles@ukho.gov.uk  
helen.elphick@thecrownestate.co.uk  
holyheadcoastguard@mcga.gov.uk  
hq@stratmarine.com  
ian@dickies.co.uk  
ianre@dongenergy.co.uk  
info.uk@stenaline.com  
info@clydeport.co.uk  
info@mezeron.com  
info@m-h-a.co.uk  
info@rnli.org.uk  
info@whitehavenhc.org.uk  
information@detini.gov.uk  
iomfishermen@manx.net  
jim@awjmarine.co.uk  
jmichel@north-ayrshire.gov.uk  
john.bateman@shell.com  
johnentwistle@wirral.gov.uk  
Brian.Forrest@peelports.com

s.alexander@sff.co.uk  
s.atkins@nw-ifca.gov.uk  
scalden@dsml.co.uk  
sff@sff.co.uk  
sprince@dsml.co.uk  
stephen.hemphill@mutual-energy.com  
steve.davie@xodusgroup.com  
steve.gallimore@merseydocks.co.uk  
Stevie.travis@mcga.gov.uk  
stliv@dongenergy.co.uk  
stuart.carruthers@rya.org.uk  
Tariq.Amin@eni.com  
tony@ramsey-steamship.com  
vanoc@dongenergy.co.uk  
vts.portoperations@merseydocks.co.uk  
wag-en@mailuk.custhelp.com  
walneytraffic@dongenergy.dk  
will.calderbank@portofmostyn.com  
WM.Belfast@mcga.gov.uk  
WM.clyde@mcga.gov.uk  
wm.holyhead@mcga.gov.uk  
wm.liverpool@mcga.gov.uk  
wm\_holyhead@mcga.gov.uk  
Wm\_liverpool@mcga.gov.uk  
wyn.parry@stenaline.com  
XASCO@dongenergy.co.uk  
xmrob@dongenergy.dk  
Caroline.Baxter@peelports.com