

NOTICE TO MARINERS

Issue Date: 24th August, 2016

Western Link Project

Deep water cable Post Lay Installation Burial Works

Mariners are advised that the Post Lay Installation Burial (PLIB) works for the exposed cable sections previously communicated for deep water installation campaign 1, campaign 2 and campaign 3 is planned to commence in early September 2016 with completion expected in November 2016.

The PLIB work is being carried out by **Prysmian** using **Normand Pacific** (IMO 9491977; Call Sign LAXI7) PLIB support vessel.

Vessels are requested to pass at a safe speed and distance and fishing vessels are advised to remain a safe distance (approximately 1.5 nautical miles) from the areas identified. Guard Vessels have been deployed at each location to aid in monitoring the exposed areas and advise of safe distances locally.

The vessels will monitor VHF Channel 16 at all times.



PLIB Support vessel - Normand Pacific

Post Lay Installation Burial (PLIB)

Along the Western Link HVDC cable route, exposed sections that have previously been communicated through notice to mariners will be reduced by completing PLIB works. The post protection methods selected for exposed sections vary along the route include PLIB works, rock placement and concrete mattresses. Post Lay Installation Burial (PLIB) works using a jetting tool

have been planned in advance of the rock placement and concrete mattresses works for the exposed section of campaign 1, campaign 2 and campaign 3.

Following the completion of campaign 1 and 2 in the southern part of the route in addition to the completion of campaign 3 in the North Channel section of the route, the PLIB vessel will now commence the jetting operations on each of these three campaigns. The PLIB operations as indicated in Figure 2 with the use of a subsea burial tool will have restricted maneuverability as it completes its work scope.

Guard vessels which have previously been stationed to monitor the cable and provide advice to mariners following the cable laying will remain in position until the all of the post protection has been completed. In areas of service crossings the guard vessels will remain on location until the completion of mattresses or rock placement works.

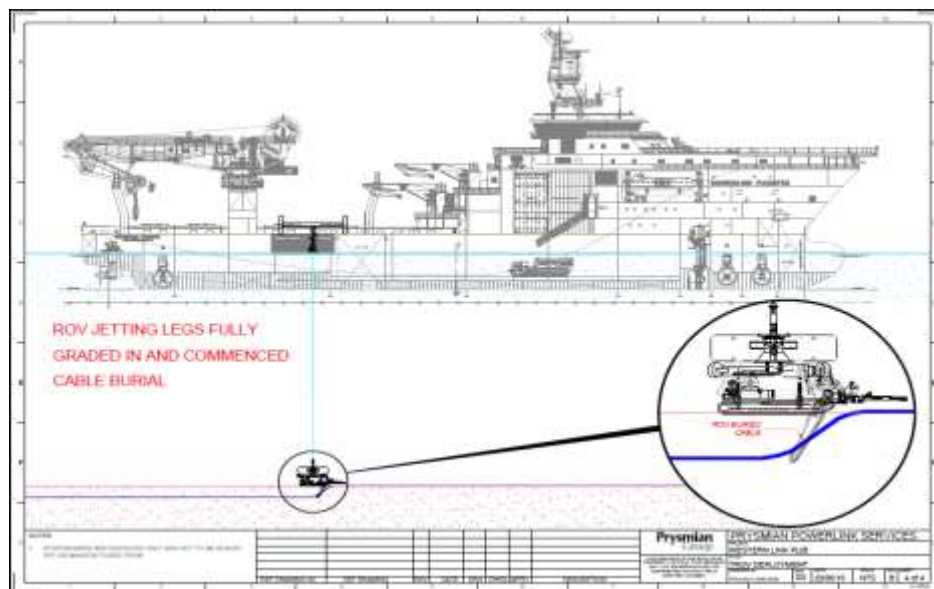


Figure 2 – PLIB arrangement

PILB Works Overview

The locations of these exposed sections are shown in Table 1 and 2 of this Notice.

As communicated through previous notice to Mariners table 1 below indicates all exposed sections including service crossings along the campaign 1 and campaign 2 cable route. Table 2 below indicates all exposed sections including service crossings along the campaign 3 cable route.

Table 2 – Exposed sections & Guard Vessel Locations for Campaign 3 in the North Channel and mouth of the Clyde.

		Patrolling Area				
		Coordinates - Pole 1				
		KP	Easting	Northing	Latitude	Longitude
Guard Vessel 6	From	176.589	354552	6025449	54°21.364'N	5°14.294'W
	To	158.300	356934.19	6042742.13	54°30.723'N	5°12.597'W
	From	154.956	356103.85	6045875.61	54°32.397'N	5°13.457'W
	To	154.895	356114.58	6045935.65	54°32.430'N	5°13.449'W
Guard Vessel 7	From	138.340	351615.55	6061063.77	54°40.503'N	5°18.077'W
	To	138.010	351399.47	6061311.55	54°40.632'N	5°18.286'W
	From	136.689	351167.96	6062577.78	54°41.311'N	5°18.540'W
	To	136.292	350950.85	6062904.93	54°41.483'N	5°18.752'W
	From	135.634	350796.50	6063538.90	54°41.822'N	5°18.915'W
	To	134.938	350455.34	6064141.08	54°42.140'N	5°19.251'W
	From	131.766	348880.63	6066842.00	54°43.567'N	5°20.800'W
	To	130.933	348683.49	6067653.76	54°44.001'N	5°21.009'W
	From	123.463	343892.14	6073212.73	54°46.908'N	5°25.648'W
	To	121.624	342434.35	6074325.67	54°47.480'N	5°27.043'W
	From	120.379	341556.85	6075195.64	54°47.932'N	5°27.890'W
	To	119.308	340874.19	6076015.18	54°48.360'N	5°28.553'W
Guard Vessel 8	From	111.668	339370.44	6083311.93	54°52.262'N	5°30.199'W
	To	106.028	337814.47	6088474.28	54°55.013'N	5°31.827'W
	From	104.628	337185.93	6089721.78	54°55.673'N	5°32.457'W
	To	103.590	336720.88	6090644.62	54°56.161'N	5°32.923'W
	From	99.326	336932.53	6094748,74	54° 58.376' N	5° 32.865' W
	To	98.491	337552.67	6095306,72	54° 58.688' N	5° 32.303' W
Guard Vessel 9	From	97.971	337776.16	6095772,25	54° 58.944' N	5° 32.110' W
	To	96.700	338257.51	6096946,64	54° 59.586' N	5° 31.699' W
	From	96.900	338179,4	6096762,5	54°59.485'N	005°31.766'W
	To	94.970	339016,1	6098488,4	55°00.431'N	005°31.040'W
	From	93.553	339765,3	6099674,5	55°01.084'N	005°30.378'W
	To	92.620	340302,7	6100430,8	55°01.502'N	005°29.899'W
	From	92.300	340577,6	6100588,4	55°01.592'N	005°29.647'W
	To	91.720	341085,8	6100846,6	55°01.741'N	005°29.179'W
	From	90.419	341345,7	6102081,1	55°02.411'N	005°28.976'W
	To	90.185	341429,5	6102298,7	55°02.530'N	005°28.905'W
Guard Vessel 10	From	78.442	346086,7	6112678,6	55°08.209'N	005°24.873'W
	To	78.293	346147,3	6112814,7	55°08.284'N	005°24.820'W
Guard Vessel 10	From	69.774	352094,2	6118871,4	55°11.655'N	005°19.417'W
	To	60.200	358512,7	6125911,9	55°15.561'N	005°13.584'W

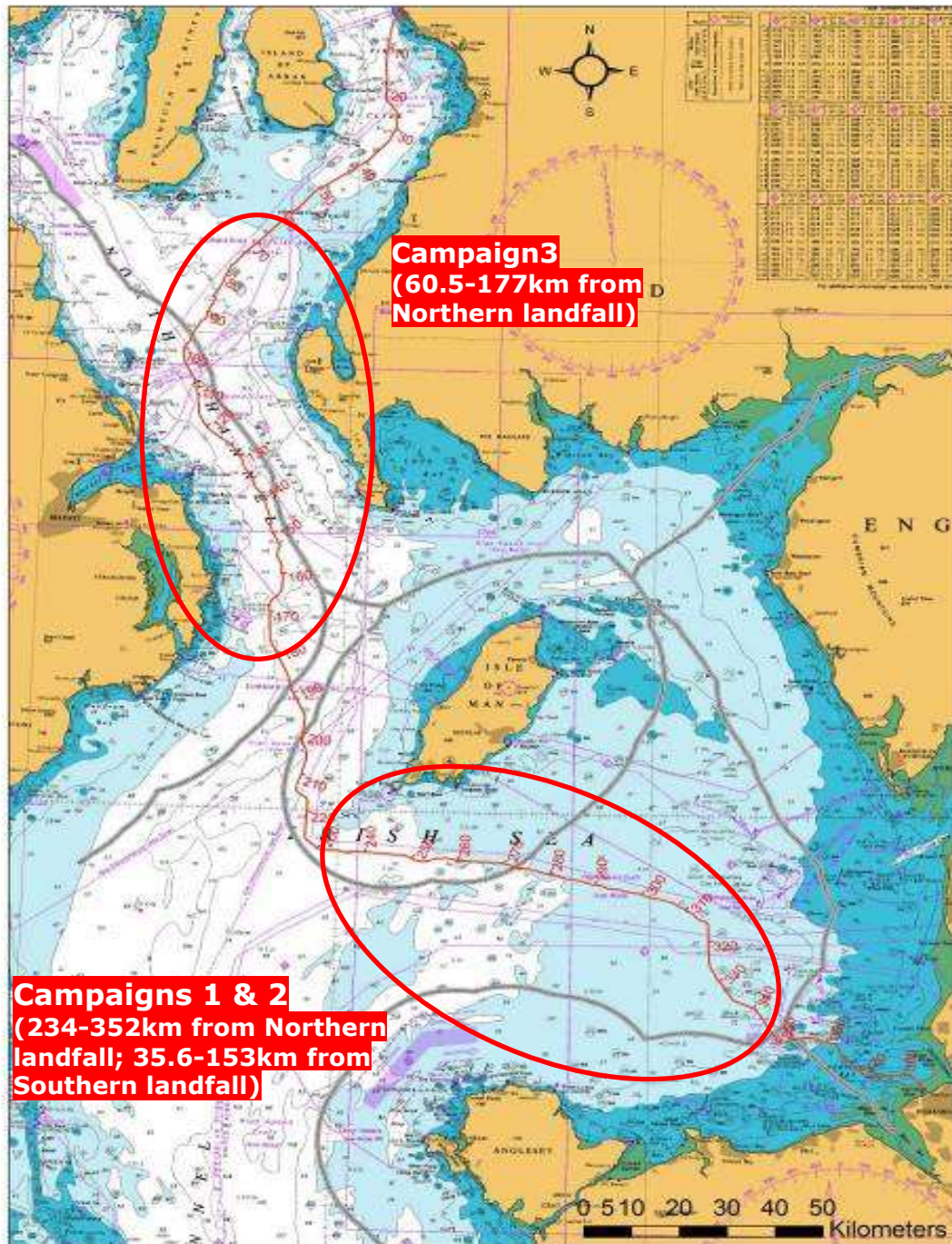


Figure 1 – Western Link cable route - Deep Water installation sections & campaigns

Contact Details:

Further enquiries should be addressed to the following contacts:

AWJ Marine	Jim Andrews <i>(who will also coordinate the Fisheries liaison for this operation)</i> jim@awjmarine.co.uk Office: +44 (0) 845-880-2540, Mobile: +44 (0) 7908-225865,
Prysmian Project Manager	Alberto Pirovano alberto.pirovano@prysmiangroup.com Office: +39 02 6449 33590 Mobile: +39 335 5962819
Master of Normand Pacific	pacific.bridge@pacific.solstad.no VSAT: +47 52 85 60 70 SAT: +870 765 064 841

Distribution List:

abat@eircom.net
admin@welshsailing.org
Alan.Gibson@marinemanagement.org.uk
alana.murphy@rya.org.uk
alasdair.wilkie@hiberniaatlantic.com
Alec.Keep@mcga.gov.uk
andre.coccucio@mcga.gov.uk
andrew.sheen@irishferries.com
annette.stube@maersk.com
b.armstrong@sff.co.uk
barrowmc@abports.co.uk
bdeas@nffo.org.uk
blackpool@marinemanagement.org.uk
bryan.davies@heyshamport.com
businessdevelopmentdepartment3@wales.gsi.gov.uk
caroline.price@rya.org.uk, ,
CETI@Centrica.com
Charlie.Mawer@clydeport.co.uk
chris.clark@gov.im
christopherkeogh@transport.ie
'claire.storey@naturalengland.org.uk'
clive.lane@mcga.gov.uk
clyde.coastguard@mcga.gov.uk
colin.brown@mcga.gov.uk
colin.brown@mcga.gov.uk
crousing@rya.co.uk
d.obrien@cil.ie
dale.rodmeil@nffo.org.uk
MerseyMarineManagers@Peelports.com
danny.everitt@mscuk.com
dannymbrien@bge.ie
david.crowther@centrica.com
DEandT@wales.gsi.gov.uk
DeshWebCorrespondence@Wales.GSI.Gov.UK
dlw@seatruckgroup.co.uk
doe.iemonitoring@doeni.gov.uk
doug.percy@transsectormarine.co.uk
dtd@cumbriasfc.fsnet.co.uk
econsentsadmin@scotland.gsi.gov.uk
emmet.mcfadden@mutual-energy.com
emmet.mcfadden@mutual-energy.com
EnergyConsents@scotland.gsi.gov.uk
enquiries@drdni.gov.uk
erecra@talktalk.net
jon.ford@cw.com
jon.ford@vodafone.com
jonwarren@merseywharf.co.uk
josephanik@wirral.gov.uk
Joyce.johnson@mcga.gov.uk
keith.3.brooks@bt.com
keith.3.brooks@bt.com
keith.tatman@mcga.gov.uk
kenneth.poole@cemex.com
Kevin.Best@BHPBilliton.com
kingfisher@seafish.co.uk
liverpool_mo@mcga.gov.uk
lykup@dongenergy.co.uk
mail@liverpoolmarina.com
marine.operations.centre@gov.im
marine.team@bt.com
Mark.Wilber@external.eni.com
mark.woodward@steampacket.com
markthomas@wirral.gov.uk
maurice.smith@esbi.com
mdurcan@bge.ie
Michael.Brew@gov.im
michael.moore9@btinternet.com
mick.mcguckin@mutual-energy.com
MS.marinelicensing@scotland.gsi.gov.uk
n.lauder@sff.co.uk
natkinson@abports.co.uk
navigation.directorate@thls.org
navigation@nlb.org.uk
neil.wellum@marinemanagement.org.uk
nkelly@doehle-iom.com
norman.leece@mezeron.com
nridehalgh@abports.co.uk
'nwplanning@naturalengland.org.uk'
osbornted@aol.com
paul.o'rourke@eirgrid.com
paul.townsend@mcga.gov.uk
peter.hodgetts@thecrownestate.co.uk
peter.jamieson@virginmedia.co.uk
peter.jordan@sse.com
portcontrol@stenaline.com
robert.floyd@wales.gsi.gov.uk
Robert.Whiteley@naturalengland.org.uk
Ron.Bailey@clydeport.co.uk

fisheries@wales.gsi.gov.uk
Fleet.Operations@POferries.com
freighthelp@poferries.com
gedherby@wirral.gov.uk
graeme.proctor@mcga.gov.uk
Gurpal.Ghotra@mutual-energy.com
hannah.birtles@naturalengland.org.uk
hcdfiles@ukho.gov.uk
hdcf@ukho.gov.uk
hdcfiles@ukho.gov.uk
helen.elphick@thecrownestate.co.uk
holyheadcoastguard@mcga.gov.uk
hq@stratmarine.com
ian@dickies.co.uk
ianre@dongenergy.co.uk
info.uk@stenaline.com
info@clydeport.co.uk
info@mezeron.com
info@m-h-a.co.uk
info@rnli.org.uk
info@whitehavenhc.org.uk
information@detini.gov.uk
iomfishermen@manx.net
jim@awjmarine.co.uk
jmichel@north-ayrshire.gov.uk
john.bateman@shell.com
johnentwistle@wirral.gov.uk

s.alexander@sff.co.uk
s.atkins@nw-ifca.gov.uk
scalden@dsml.co.uk
sff@sff.co.uk
sprince@dsml.co.uk
stephen.hemphill@mutual-energy.com
steve.davie@xodusgroup.com
steve.gallimore@merseydocks.co.uk
Stevie.travis@mcga.gov.uk
stliv@dongenergy.co.uk
stuart.carruthers@rya.org.uk
Tariq.Amin@eni.com
tony@ramsey-steamship.com
vanoc@dongenergy.co.uk
vts.portoperations@merseydocks.co.uk
wag-en@mailuk.custhelp.com
walneytraffic@dongenergy.dk
will.calderbank@portofmostyn.com
WM.Belfast@mcga.gov.uk
WM.clyde@mcga.gov.uk
wm.holyhead@mcga.gov.uk
wm.liverpool@mcga.gov.uk
wm_holyhead@mcga.gov.uk
Wm_liverpool@mcga.gov.uk
wyn.parry@stenaline.com
XASCO@dongenergy.co.uk
xmrob@dongenergy.dk