

NOTICE TO MARINERS

Issue Date: 15th July, 2016

Western Link Project

Deep water cable installation in the North Channel

Mariners are advised that the Preliminary works for the deep water installation campaign 6 of the Western Link HVDC cable, in the North Channel of the Irish Sea between Scotland and Northern Ireland for about 120km, is planned to commence on the 15th of July 2016 and target completion in July 2016.

Pre- Lay Survey

As indicated in the sequence of activities related to the installation operations, before commencing the installation works a pre-lay survey will be carried out along the cable route using a survey vessel. The survey will consist of a visual and instrumental ROV survey of the planned Western Link cable route. The previously installed pre-lay mattresses layout were re-surveyed and confirmed their positions above the existing cable and pipeline crossings (where applicable).

A pre-lay survey of the campaign 6 cable route will be conducted by **Deep Ocean 1 UK** using the **Deep Helder** (IMO 9690872, Call Sign PBYU) survey vessel.

During such times the vessels will have restricted ability to manoeuvre and other vessels are requested to pass at a safe speed and distance.

The vessels will monitor VHF Channel 16 at all times.



Survey vessel – Deep Helder

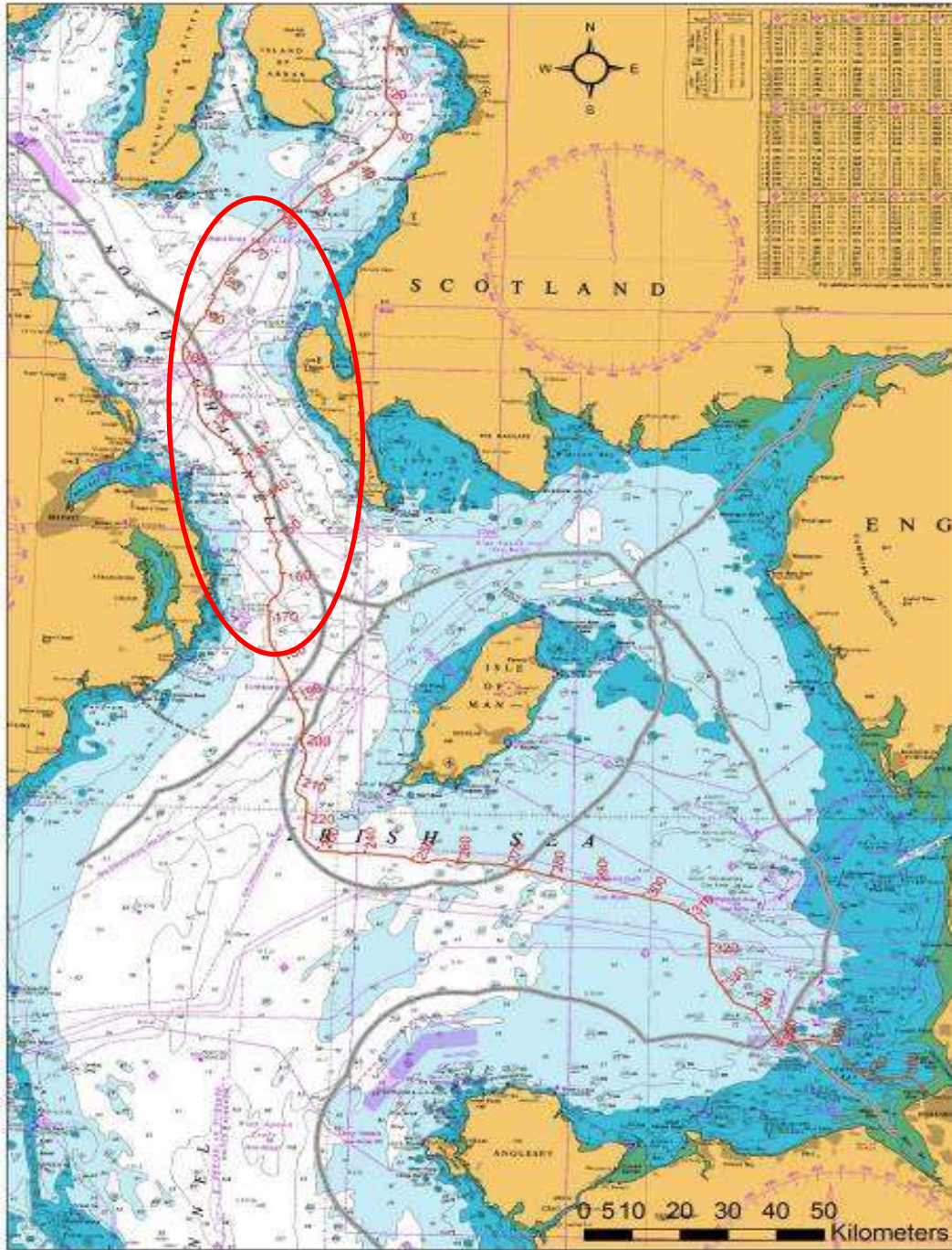


Figure 3 – Western Link cable route and highlighted Deep Water campaign 6 installation section (in Red)

APPENDIX 1

Table 3 –Campaign 6 installation section route. Shaded cells in the table indicate lengths of cable that will be free laid and subsequently buried by jetting.

| ID (Position Name / Event) | WGS84 - UTM 30 N | | WGS84 | | Water Depth referred to LAT (m) | Geodetic | | | | Turning Angle (deg) |
|-------------------------------|------------------|----------|--------------|---------------|---------------------------------|-----------------------|----------------------|----------------------|---------------|---------------------|
| | Easting | Northing | Latitude | Longitude | | Partial Distance (km) | KP (km) from Ardneil | RKP (km) from Wirral | Bearing (deg) | |
| AC_39 | 360198 | 6126500 | 55° 15.907'N | 005° 12.012'W | 47 | 5,460 | 58,409 | 328,752 | 220,4 | 18,0 |
| AC_40 | 359783 | 6126262 | 55° 15.772'N | 005° 12.396'W | 47 | 0,478 | 58,887 | 328,273 | 238,4 | 16,8 |
| LANIS_3_(2)_Cable_IS | 359042 | 6126091 | 55° 15.667'N | 005° 13.090'W | 47 | 0,760 | 59,647 | 327,513 | 255,2 | 0,0 |
| AC_41 | 358744 | 6126022 | 55° 15.625'N | 005° 13.370'W | 47 | 0,307 | 59,954 | 327,206 | 255,2 | 15,9 |
| AC_42 | 358459 | 6125865 | 55° 15.535'N | 005° 13.634'W | 47 | 0,325 | 60,279 | 326,881 | 239,3 | 13,8 |
| AC_43 | 358220 | 6125645 | 55° 15.412'N | 005° 13.852'W | 47 | 0,325 | 60,604 | 326,556 | 225,4 | 15,9 |
| AC_44 | 357243 | 6124042 | 55° 14.532'N | 005° 14.726'W | 47 | 1,878 | 62,482 | 324,678 | 209,5 | 13,3 |
| AC_45 | 352146 | 6118898 | 55° 11.670'N | 005° 19.370'W | 56 | 7,243 | 69,725 | 317,436 | 222,9 | 2,9 |
| AC_46 | 349623 | 6116607 | 55° 10.391'N | 005° 21.673'W | 61 | 3,408 | 73,133 | 314,028 | 225,8 | 5,8 |
| AC_47 | 347137 | 6113842 | 55° 08.856'N | 005° 23.923'W | 75 | 3,718 | 76,851 | 310,309 | 220,0 | 8,7 |
| AC_48 | 346547 | 6113358 | 55° 08.584'N | 005° 24.463'W | 73 | 0,763 | 77,615 | 309,546 | 228,7 | 7,6 |
| AC_49 | 346278 | 6113071 | 55° 08.424'N | 005° 24.706'W | 75 | 0,394 | 78,009 | 309,152 | 221,1 | 19,1 |
| AC_50 | 345570 | 6111481 | 55° 07.555'N | 005° 25.319'W | 80 | 1,740 | 79,748 | 307,412 | 202,0 | 10,4 |
| AC_51 | 345181 | 6110912 | 55° 07.241'N | 005° 25.666'W | 82 | 0,689 | 80,438 | 306,723 | 212,4 | 20,2 |
| AC_52 | 345081 | 6110513 | 55° 07.024'N | 005° 25.748'W | 83 | 0,411 | 80,849 | 306,311 | 192,1 | 13,0 |
| AC_53 | 344880 | 6110120 | 55° 06.808'N | 005° 25.924'W | 85 | 0,442 | 81,291 | 305,870 | 205,1 | 15,8 |
| AC_54 | 344808 | 6109760 | 55° 06.613'N | 005° 25.980'W | 84 | 0,368 | 81,659 | 305,502 | 189,3 | 12,8 |
| AC_55 | 344539 | 6109158 | 55° 06.284'N | 005° 26.213'W | 87 | 0,659 | 82,317 | 304,843 | 202,1 | 1,4 |
| AC_56 | 344279 | 6108615 | 55° 05.986'N | 005° 26.439'W | 93 | 0,602 | 82,920 | 304,241 | 203,5 | 4,7 |

| ID (Position Name / Event) | WGS84 - UTM 30 N | | WGS84 | | Water Depth referred to LAT (m) | Geodetic | | | | Turning Angle (deg) |
|-------------------------------|------------------|----------|--------------|---------------|---------------------------------------|-----------------------------|----------------------------|----------------------------|------------------|---------------------------|
| | Easting | Northing | Latitude | Longitude | | Partial Distance (km) | KP (km) from Ardneil | RKP (km) from Wirral | Bearing (deg) | |
| AC_57 | 344113 | 6108329 | 55° 05.829'N | 005° 26.586'W | 95 | 0,331 | 83,251 | 303,910 | 208,2 | 10,0 |
| AC_58 | 343994 | 6108005 | 55° 05.652'N | 005° 26.687'W | 95 | 0,345 | 83,596 | 303,564 | 198,2 | 4,0 |
| AC_59 | 343870 | 6107730 | 55° 05.502'N | 005° 26.794'W | 99 | 0,301 | 83,897 | 303,263 | 202,2 | 19,6 |
| AC_60 | 343711 | 6107565 | 55° 05.410'N | 005° 26.938'W | 100 | 0,230 | 84,127 | 303,034 | 221,9 | 3,0 |
| AC_61 | 343453 | 6107322 | 55° 05.274'N | 005° 27.173'W | 103 | 0,354 | 84,481 | 302,680 | 224,9 | 7,8 |
| AC_62 | 342927 | 6106675 | 55° 04.916'N | 005° 27.645'W | 100 | 0,834 | 85,314 | 301,846 | 217,1 | 19,4 |
| AC_63 | 342859 | 6106486 | 55° 04.812'N | 005° 27.702'W | 103 | 0,202 | 85,516 | 301,644 | 197,7 | 17,3 |
| AC_64 | 342847 | 6106192 | 55° 04.654'N | 005° 27.705'W | 106 | 0,294 | 85,810 | 301,351 | 180,4 | 10,8 |
| AC_65 | 342878 | 6105981 | 55° 04.541'N | 005° 27.668'W | 104 | 0,213 | 86,023 | 301,138 | 169,6 | 20,0 |
| AC_66 | 343026 | 6105707 | 55° 04.396'N | 005° 27.520'W | 98 | 0,312 | 86,335 | 300,826 | 149,6 | 18,7 |
| AC_67 | 343063 | 6105485 | 55° 04.277'N | 005° 27.478'W | 98 | 0,225 | 86,560 | 300,600 | 168,4 | 18,6 |
| AC_68 | 343025 | 6105242 | 55° 04.146'N | 005° 27.506'W | 103 | 0,245 | 86,806 | 300,355 | 187,0 | 10,1 |
| AC_69 | 342945 | 6105013 | 55° 04.021'N | 005° 27.573'W | 104 | 0,243 | 87,049 | 300,112 | 197,1 | 7,6 |
| AC_70 | 342827 | 6104778 | 55° 03.892'N | 005° 27.676'W | 105 | 0,262 | 87,311 | 299,849 | 204,7 | 9,4 |
| AC_71 | 342451 | 6104264 | 55° 03.608'N | 005° 28.012'W | 107 | 0,638 | 87,949 | 299,212 | 214,2 | 11,7 |
| AC_72 | 342333 | 6104004 | 55° 03.466'N | 005° 28.114'W | 107 | 0,286 | 88,234 | 298,926 | 202,5 | 2,7 |
| AC_73 | 342177 | 6103700 | 55° 03.299'N | 005° 28.251'W | 111 | 0,342 | 88,576 | 298,585 | 205,2 | 10,1 |
| AC_74 | 342054 | 6103539 | 55° 03.210'N | 005° 28.361'W | 110 | 0,202 | 88,778 | 298,382 | 215,3 | 9,3 |
| AC_75 | 341870 | 6103365 | 55° 03.113'N | 005° 28.528'W | 107 | 0,253 | 89,032 | 298,129 | 224,6 | 18,8 |
| AC_76 | 341776 | 6103187 | 55° 03.015'N | 005° 28.610'W | 106 | 0,201 | 89,233 | 297,928 | 205,8 | 12,3 |
| AC_77 | 341699 | 6102911 | 55° 02.865'N | 005° 28.673'W | 109 | 0,287 | 89,519 | 297,641 | 193,6 | 6,1 |
| AC_78 | 341623 | 6102722 | 55° 02.761'N | 005° 28.737'W | 112 | 0,204 | 89,723 | 297,437 | 199,7 | 6,7 |
| AC_79 | 341524 | 6102539 | 55° 02.661'N | 005° 28.824'W | 113 | 0,208 | 89,932 | 297,229 | 206,4 | 11,2 |
| AC_80 | 341428 | 6102228 | 55° 02.492'N | 005° 28.904'W | 121 | 0,325 | 90,257 | 296,904 | 195,2 | 7,6 |
| AC_81 | 341332 | 6102021 | 55° 02.378'N | 005° 28.987'W | 130 | 0,228 | 90,485 | 296,675 | 202,8 | 20,4 |

| ID (Position Name / Event) | WGS84 - UTM 30 N | | WGS84 | | Water Depth referred to LAT (m) | Geodetic | | | | Turning Angle (deg) |
|----------------------------------|------------------|----------|--------------|---------------|---------------------------------|-----------------------|----------------------|----------------------|---------------|---------------------|
| | Easting | Northing | Latitude | Longitude | | Partial Distance (km) | KP (km) from Ardneil | RKP (km) from Wirral | Bearing (deg) | |
| AC_82 | 341314 | 6101783 | 55° 02.250'N | 005° 28.997'W | 130 | 0,239 | 90,724 | 296,437 | 182,4 | 8,1 |
| AC_83 | 341333 | 6101477 | 55° 02.085'N | 005° 28.968'W | 130 | 0,307 | 91,031 | 296,130 | 174,4 | 11,8 |
| AC_84 | 341304 | 6101274 | 55° 01.976'N | 005° 28.989'W | 129 | 0,204 | 91,235 | 295,925 | 186,1 | 11,8 |
| AC_85 | 341228 | 6101063 | 55° 01.861'N | 005° 29.053'W | 124 | 0,224 | 91,459 | 295,701 | 197,9 | 5,8 |
| AC_86 | 341140 | 6100881 | 55° 01.761'N | 005° 29.130'W | 133 | 0,203 | 91,662 | 295,499 | 203,6 | 19,4 |
| AC_87 | 340997 | 6100739 | 55° 01.681'N | 005° 29.258'W | 131 | 0,201 | 91,863 | 295,297 | 223,1 | 19,6 |
| AC_88 | 340812 | 6100652 | 55° 01.631'N | 005° 29.429'W | 131 | 0,204 | 92,068 | 295,093 | 242,7 | 6,8 |
| AC_89 | 340492 | 6100545 | 55° 01.567'N | 005° 29.726'W | 128 | 0,338 | 92,405 | 294,755 | 249,5 | 18,6 |
| AC_90 | 340208 | 6100331 | 55° 01.446'N | 005° 29.985'W | 122 | 0,356 | 92,762 | 294,399 | 231,0 | 19,8 |
| AC_91 | 339780 | 6099677 | 55° 01.086'N | 005° 30.364'W | 129 | 0,781 | 93,543 | 293,618 | 211,1 | 4,4 |
| AC_92 | 339596 | 6099342 | 55° 00.902'N | 005° 30.526'W | 129 | 0,382 | 93,925 | 293,235 | 206,8 | 10,9 |
| AC_93 | 339435 | 6099149 | 55° 00.795'N | 005° 30.670'W | 132 | 0,251 | 94,176 | 292,985 | 217,7 | 4,5 |
| AC_94 | 339242 | 6098875 | 55° 00.644'N | 005° 30.842'W | 133 | 0,335 | 94,511 | 292,649 | 213,2 | 6,3 |
| AC_95 | 339110 | 6098636 | 55° 00.512'N | 005° 30.958'W | 130 | 0,274 | 94,785 | 292,376 | 206,9 | 2,3 |
| AC_96 | 338970 | 6098358 | 55° 00.360'N | 005° 31.079'W | 130 | 0,311 | 95,096 | 292,065 | 204,5 | 1,1 |
| AC_97 | 338804 | 6098008 | 55° 00.168'N | 005° 31.223'W | 129 | 0,387 | 95,483 | 291,677 | 203,5 | 10,8 |
| AC_98 | 338532 | 6097639 | 54° 59.964'N | 005° 31.465'W | 129 | 0,458 | 95,941 | 291,219 | 214,2 | 16,5 |
| AC_99 | 338448 | 6097405 | 54° 59.836'N | 005° 31.536'W | 131 | 0,249 | 96,191 | 290,970 | 197,8 | 1,8 |
| AC_100 | 338379 | 6097193 | 54° 59.721'N | 005° 31.594'W | 131 | 0,223 | 96,413 | 290,747 | 196,0 | 5,0 |
| Scotland/Northern Ireland waters | 338209 | 6096796 | 54° 59.503'N | 005° 31.739'W | 137 | 0,432 | 96,845 | 290,315 | 201,0 | 0,0 |
| AC_101 | 338082 | 6096496 | 54° 59.339'N | 005° 31.848'W | 140 | 0,326 | 97,171 | 289,990 | 201,0 | 3,0 |
| AC_102 | 337904 | 6096009 | 54° 59.074'N | 005° 31.998'W | 139 | 0,518 | 97,689 | 289,471 | 198,0 | 6,4 |
| AC_103 | 337808 | 6095815 | 54° 58.967'N | 005° 32.082'W | 140 | 0,216 | 97,905 | 289,255 | 204,4 | 6,3 |
| AC_104 | 337686 | 6095483 | 54° 58.786'N | 005° 32.184'W | 143 | 0,354 | 98,260 | 288,901 | 198,0 | 12,2 |
| AC_105 | 337557 | 6095278 | 54° 58.673'N | 005° 32.298'W | 142 | 0,242 | 98,501 | 288,659 | 210,2 | 18,9 |

| ID (Position Name / Event) | WGS84 - UTM 30 N | | WGS84 | | Water Depth referred to LAT (m) | Geodetic | | | | Turning Angle (deg) |
|---|------------------|----------|--------------|---------------|--|-----------------------------|----------------------------|----------------------------|------------------|---------------------------|
| | Easting | Northing | Latitude | Longitude | | Partial Distance (km) | KP (km) from Ardneil | RKP (km) from Wirral | Bearing (deg) | |
| AC_106 | 337372 | 6095129 | 54° 58.589'N | 005° 32.467'W | 144 | 0,238 | 98,739 | 288,421 | 229,1 | 3,7 |
| Hibernia_A_Cable_IS | 337031 | 6094818 | 54° 58.415'N | 005° 32.775'W | 145 | 0,462 | 99,201 | 287,960 | 225,5 | 0,0 |
| AC_107 | 336843 | 6094646 | 54° 58.319'N | 005° 32.945'W | 143 | 0,255 | 99,456 | 287,705 | 225,4 | 18,2 |
| AC_108 | 336566 | 6094152 | 54° 58.047'N | 005° 33.188'W | 141 | 0,566 | 100,022 | 287,139 | 207,3 | 19,6 |
| AC_109 | 336443 | 6093445 | 54° 57.664'N | 005° 33.279'W | 149 | 0,718 | 100,740 | 286,421 | 187,7 | 12,2 |
| AC_110 | 336454 | 6093188 | 54° 57.526'N | 005° 33.260'W | 148 | 0,257 | 100,997 | 286,163 | 175,5 | 0,2 |
| AC_111 | 336497 | 6092234 | 54° 57.012'N | 005° 33.187'W | 148 | 0,955 | 101,953 | 285,208 | 175,3 | 0,8 |
| AC_112 | 336510 | 6091831 | 54° 56.796'N | 005° 33.162'W | 149 | 0,402 | 102,355 | 284,806 | 176,1 | 5,9 |
| AC_113 | 336546 | 6091563 | 54° 56.652'N | 005° 33.118'W | 150 | 0,271 | 102,626 | 284,535 | 170,2 | 3,1 |
| AC_114 | 336563 | 6091357 | 54° 56.542'N | 005° 33.096'W | 149 | 0,206 | 102,832 | 284,328 | 173,3 | 1,2 |
| AC_115 | 336599 | 6091006 | 54° 56.353'N | 005° 33.050'W | 149 | 0,353 | 103,185 | 283,976 | 172,1 | 17,0 |
| AC_116 | 336679 | 6090815 | 54° 56.252'N | 005° 32.968'W | 149 | 0,207 | 103,392 | 283,768 | 155,1 | 4,8 |
| AC_117 | 336741 | 6090623 | 54° 56.150'N | 005° 32.904'W | 149 | 0,202 | 103,594 | 283,566 | 159,9 | 14,6 |
| Scotland_North- Ireland_2_Cable_IS | 336823 | 6090496 | 54° 56.083'N | 005° 32.823'W | 149 | 0,151 | 103,746 | 283,415 | 145,3 | 0,0 |
| AC_118 | 336927 | 6090333 | 54° 55.997'N | 005° 32.720'W | 149 | 0,194 | 103,939 | 283,221 | 145,3 | 16,1 |
| AC_119 | 336985 | 6090140 | 54° 55.894'N | 005° 32.659'W | 150 | 0,202 | 104,141 | 283,020 | 161,4 | 11,2 |
| MOYLE_Interconnector_N orth_Cable_IS | 337099 | 6089922 | 54° 55.779'N | 005° 32.545'W | 151 | 0,246 | 104,387 | 282,774 | 150,2 | 0,0 |
| AC_120 | 337306 | 6089529 | 54° 55.571'N | 005° 32.338'W | 150 | 0,444 | 104,831 | 282,330 | 150,2 | 5,6 |
| AC_121 | 337435 | 6089212 | 54° 55.403'N | 005° 32.207'W | 150 | 0,341 | 105,172 | 281,988 | 155,8 | 7,3 |
| AC_122 | 337709 | 6088726 | 54° 55.147'N | 005° 31.934'W | 149 | 0,558 | 105,731 | 281,430 | 148,5 | 3,7 |
| AC_123 | 337809 | 6088519 | 54° 55.037'N | 005° 31.834'W | 148 | 0,230 | 105,961 | 281,200 | 152,2 | 1,4 |
| Scotland_to_Northern_Irel and_(SNIP)_Pipeline_IS | 337929 | 6088285 | 54° 54.913'N | 005° 31.714'W | 148 | 0,263 | 106,224 | 280,937 | 150,8 | 0,0 |
| MOYLE_Interconnector_S outh_Cable_IS | 338085 | 6087979 | 54° 54.752'N | 005° 31.557'W | 148 | 0,344 | 106,568 | 280,593 | 150,8 | 0,0 |

| ID (Position Name / Event) | WGS84 - UTM 30 N | | WGS84 | | Water Depth referred to LAT (m) | Geodetic | | | | Turning Angle (deg) |
|-------------------------------|------------------|----------|--------------|---------------|---------------------------------|-----------------------|----------------------|----------------------|---------------|---------------------|
| | Easting | Northing | Latitude | Longitude | | Partial Distance (km) | KP (km) from Ardneil | RKP (km) from Wirral | Bearing (deg) | |
| AC_124 | 338168 | 6087818 | 54° 54.666'N | 005° 31.474'W | 147 | 0,181 | 106,749 | 280,412 | 150,8 | 5,5 |
| AC_125 | 338277 | 6087544 | 54° 54.521'N | 005° 31.363'W | 145 | 0,294 | 107,043 | 280,117 | 156,3 | 7,4 |
| AC_126 | 338493 | 6087154 | 54° 54.315'N | 005° 31.148'W | 140 | 0,446 | 107,489 | 279,672 | 148,9 | 3,3 |
| AC_127 | 338604 | 6086925 | 54° 54.194'N | 005° 31.037'W | 137 | 0,255 | 107,744 | 279,417 | 152,2 | 3,0 |
| AC_128 | 338840 | 6086362 | 54° 53.895'N | 005° 30.797'W | 141 | 0,611 | 108,354 | 278,806 | 155,2 | 18,7 |
| LANIS_3_(3)_Cable_IS | 338976 | 6086206 | 54° 53.814'N | 005° 30.664'W | 139 | 0,207 | 108,562 | 278,599 | 136,6 | 0,0 |
| AC_129 | 339125 | 6086038 | 54° 53.726'N | 005° 30.520'W | 139 | 0,225 | 108,786 | 278,374 | 136,6 | 5,4 |
| AC_130 | 339321 | 6085853 | 54° 53.631'N | 005° 30.330'W | 136 | 0,269 | 109,055 | 278,105 | 131,2 | 20,4 |
| AC_131 | 339413 | 6085668 | 54° 53.533'N | 005° 30.238'W | 135 | 0,207 | 109,262 | 277,898 | 151,6 | 20,0 |
| AC_132 | 339436 | 6085467 | 54° 53.424'N | 005° 30.210'W | 135 | 0,203 | 109,465 | 277,696 | 171,6 | 14,9 |
| AC_133 | 339385 | 6085126 | 54° 53.240'N | 005° 30.247'W | 133 | 0,344 | 109,809 | 277,351 | 186,5 | 4,6 |
| AC_134 | 339274 | 6084651 | 54° 52.982'N | 005° 30.334'W | 138 | 0,488 | 110,297 | 276,864 | 191,1 | 19,1 |
| AC_135 | 339313 | 6084276 | 54° 52.781'N | 005° 30.285'W | 138 | 0,377 | 110,674 | 276,486 | 171,9 | 2,4 |
| AC_136 | 339331 | 6083992 | 54° 52.628'N | 005° 30.259'W | 135 | 0,285 | 110,959 | 276,201 | 174,4 | 3,3 |
| AC_137 | 339332 | 6083683 | 54° 52.462'N | 005° 30.247'W | 134 | 0,309 | 111,268 | 275,893 | 177,7 | 3,9 |
| AC_138 | 339354 | 6083379 | 54° 52.298'N | 005° 30.217'W | 136 | 0,305 | 111,573 | 275,587 | 173,9 | 20,5 |
| AC_139 | 339439 | 6083192 | 54° 52.199'N | 005° 30.131'W | 137 | 0,205 | 111,778 | 275,382 | 153,4 | 6,3 |
| AC_140 | 339502 | 6083000 | 54° 52.097'N | 005° 30.065'W | 137 | 0,202 | 111,980 | 275,181 | 159,7 | 19,7 |
| AC_141 | 339497 | 6082793 | 54° 51.985'N | 005° 30.064'W | 137 | 0,208 | 112,188 | 274,973 | 179,4 | 1,7 |
| AC_142 | 339498 | 6082556 | 54° 51.858'N | 005° 30.055'W | 136 | 0,237 | 112,425 | 274,736 | 177,7 | 16,6 |
| AC_143 | 339441 | 6082362 | 54° 51.752'N | 005° 30.101'W | 136 | 0,203 | 112,627 | 274,533 | 194,3 | 17,6 |
| Cable Unknown_(1) | 339442 | 6082323 | 54° 51.731'N | 005° 30.099'W | 137 | 0,039 | 112,666 | 274,494 | 176,7 | 0,0 |
| Cable Unknown_(2) | 339446 | 6082145 | 54° 51.635'N | 005° 30.090'W | 137 | 0,178 | 112,844 | 274,316 | 176,7 | 0,0 |
| AC_144 | 339447 | 6082076 | 54° 51.598'N | 005° 30.086'W | 136 | 0,069 | 112,913 | 274,247 | 176,7 | 3,6 |
| AC_145 | 339469 | 6081810 | 54° 51.456'N | 005° 30.057'W | 135 | 0,266 | 113,179 | 273,981 | 173,2 | 3,3 |

| ID (Position Name / Event) | WGS84 - UTM 30 N | | WGS84 | | Water Depth referred to LAT (m) | Geodetic | | | | Turning Angle (deg) |
|---|------------------|----------|--------------|---------------|--|-----------------------------|----------------------------|----------------------------|------------------|---------------------------|
| | Easting | Northing | Latitude | Longitude | | Partial Distance (km) | KP (km) from Ardneil | RKP (km) from Wirral | Bearing (deg) | |
| AC_146 | 339475 | 6081594 | 54° 51.339'N | 005° 30.044'W | 133 | 0,216 | 113,396 | 273,765 | 176,4 | 7,1 |
| AC_147 | 339520 | 6081296 | 54° 51.179'N | 005° 29.992'W | 135 | 0,302 | 113,698 | 273,463 | 169,4 | 3,7 |
| AC_148 | 339554 | 6080897 | 54° 50.965'N | 005° 29.947'W | 136 | 0,400 | 114,098 | 273,063 | 173,1 | 11,7 |
| AC_149 | 339622 | 6080671 | 54° 50.845'N | 005° 29.877'W | 135 | 0,236 | 114,333 | 272,827 | 161,4 | 6,3 |
| AC_150 | 339667 | 6080420 | 54° 50.710'N | 005° 29.826'W | 135 | 0,256 | 114,589 | 272,571 | 167,7 | 19,4 |
| AC_151 | 339608 | 6080056 | 54° 50.513'N | 005° 29.868'W | 135 | 0,369 | 114,958 | 272,203 | 187,1 | 15,2 |
| AC_152 | 339651 | 6079649 | 54° 50.295'N | 005° 29.815'W | 135 | 0,409 | 115,367 | 271,793 | 171,9 | 9,1 |
| AC_153 | 339722 | 6079389 | 54° 50.156'N | 005° 29.740'W | 135 | 0,269 | 115,636 | 271,524 | 162,8 | 14,8 |
| AC_154 | 339724 | 6078905 | 54° 49.895'N | 005° 29.722'W | 135 | 0,484 | 116,121 | 271,040 | 177,7 | 4,2 |
| AC_155 | 339766 | 6078379 | 54° 49.613'N | 005° 29.666'W | 135 | 0,527 | 116,648 | 270,512 | 173,5 | 17,5 |
| AC_156 | 339930 | 6077973 | 54° 49.397'N | 005° 29.499'W | 133 | 0,438 | 117,086 | 270,074 | 155,9 | 1,1 |
| AC_157 | 340004 | 6077778 | 54° 49.293'N | 005° 29.423'W | 133 | 0,209 | 117,295 | 269,866 | 157,1 | 16,0 |
| AC_158 | 340124 | 6077618 | 54° 49.210'N | 005° 29.306'W | 135 | 0,200 | 117,495 | 269,666 | 141,0 | 14,5 |
| AC_159 | 340242 | 6077334 | 54° 49.059'N | 005° 29.187'W | 135 | 0,307 | 117,802 | 269,359 | 155,5 | 6,1 |
| AC_160 | 340422 | 6077003 | 54° 48.884'N | 005° 29.008'W | 130 | 0,377 | 118,179 | 268,981 | 149,4 | 16,0 |
| AC_161 | 340493 | 6076687 | 54° 48.715'N | 005° 28.932'W | 127 | 0,323 | 118,503 | 268,658 | 165,4 | 9,5 |
| AC_162 | 340586 | 6076457 | 54° 48.593'N | 005° 28.837'W | 124 | 0,249 | 118,751 | 268,410 | 155,9 | 12,1 |
| AC_163 | 340877 | 6076027 | 54° 48.367'N | 005° 28.551'W | 121 | 0,520 | 119,271 | 267,890 | 143,8 | 2,5 |
| Knock_Bay- Whitehead_Telegraph_Ca ble_OOS | 340929 | 6075958 | 54° 48.331'N | 005° 28.501'W | 121 | 0,086 | 119,356 | 267,804 | 141,3 | 0,0 |
| AC_164 | 341217 | 6075571 | 54° 48.128'N | 005° 28.219'W | 121 | 0,483 | 119,839 | 267,321 | 141,3 | 10,7 |
| AC_165 | 341496 | 6075314 | 54° 47.995'N | 005° 27.950'W | 122 | 0,380 | 120,219 | 266,942 | 130,6 | 13,8 |
| AC_166 | 341611 | 6075141 | 54° 47.903'N | 005° 27.837'W | 123 | 0,208 | 120,427 | 266,734 | 144,4 | 4,0 |
| AC_167 | 341804 | 6074890 | 54° 47.772'N | 005° 27.650'W | 129 | 0,316 | 120,743 | 266,418 | 140,4 | 11,7 |
| AC_168 | 342477 | 6074311 | 54° 47.473'N | 005° 27.003'W | 130 | 0,888 | 121,631 | 265,530 | 128,7 | 1,1 |

| ID (Position Name / Event) | WGS84 - UTM 30 N | | WGS84 | | Water Depth referred to LAT (m) | Geodetic | | | | Turning Angle (deg) |
|--|------------------|----------|--------------|---------------|--|-----------------------------|----------------------------|----------------------------|------------------|---------------------------|
| | Easting | Northing | Latitude | Longitude | | Partial Distance (km) | KP (km) from Ardneil | RKP (km) from Wirral | Bearing (deg) | |
| AC_169 | 342818 | 6074006 | 54° 47.315'N | 005° 26.676'W | 129 | 0,457 | 122,088 | 265,073 | 129,8 | 4,8 |
| AC_170 | 343374 | 6073586 | 54° 47.099'N | 005° 26.144'W | 130 | 0,697 | 122,785 | 264,376 | 125,1 | 4,8 |
| AC_171 | 343741 | 6073355 | 54° 46.981'N | 005° 25.794'W | 130 | 0,434 | 123,219 | 263,942 | 120,3 | 6,9 |
| Port_Kale- Whitehead_Telegraph_Ca ble_OOS | 343954 | 6073181 | 54° 46.892'N | 005° 25.590'W | 135 | 0,275 | 123,494 | 263,666 | 127,1 | 0,0 |
| AC_172 | 344071 | 6073086 | 54° 46.843'N | 005° 25.478'W | 136 | 0,150 | 123,644 | 263,516 | 127,1 | 1,3 |
| AC_173 | 344399 | 6072806 | 54° 46.698'N | 005° 25.163'W | 139 | 0,432 | 124,076 | 263,084 | 128,5 | 1,0 |
| AC_174 | 344560 | 6072664 | 54° 46.625'N | 005° 25.009'W | 139 | 0,214 | 124,290 | 262,870 | 129,5 | 7,2 |
| AC_175 | 344827 | 6072483 | 54° 46.532'N | 005° 24.754'W | 140 | 0,323 | 124,613 | 262,547 | 122,2 | 8,0 |
| AC_176 | 344978 | 6072346 | 54° 46.461'N | 005° 24.609'W | 143 | 0,204 | 124,817 | 262,344 | 130,2 | 11,2 |
| AC_177 | 345218 | 6072202 | 54° 46.388'N | 005° 24.380'W | 144 | 0,280 | 125,097 | 262,063 | 119,0 | 5,9 |
| AC_178 | 345380 | 6072080 | 54° 46.325'N | 005° 24.225'W | 145 | 0,203 | 125,300 | 261,860 | 124,9 | 3,3 |
| AC_179 | 345551 | 6071936 | 54° 46.251'N | 005° 24.062'W | 146 | 0,223 | 125,523 | 261,638 | 128,2 | 4,8 |
| AC_180 | 345707 | 6071781 | 54° 46.170'N | 005° 23.912'W | 145 | 0,220 | 125,743 | 261,417 | 133,0 | 4,1 |
| AC_181 | 345881 | 6071629 | 54° 46.092'N | 005° 23.744'W | 149 | 0,231 | 125,974 | 261,186 | 128,9 | 3,8 |
| AC_182 | 346325 | 6071294 | 54° 45.919'N | 005° 23.320'W | 150 | 0,556 | 126,531 | 260,630 | 125,2 | 1,5 |
| AC_183 | 346526 | 6071149 | 54° 45.845'N | 005° 23.128'W | 148 | 0,248 | 126,779 | 260,382 | 123,7 | 13,5 |
| AC_184 | 346683 | 6070968 | 54° 45.750'N | 005° 22.976'W | 148 | 0,240 | 127,019 | 260,142 | 137,1 | 5,3 |
| AC_185 | 346771 | 6070846 | 54° 45.686'N | 005° 22.890'W | 148 | 0,151 | 127,169 | 259,991 | 142,4 | 6,8 |
| AC_186 | 347331 | 6069825 | 54° 45.146'N | 005° 22.336'W | 152 | 1,164 | 128,333 | 258,827 | 149,3 | 0,6 |
| AC_187 | 347507 | 6069514 | 54° 44.982'N | 005° 22.163'W | 156 | 0,357 | 128,690 | 258,470 | 148,7 | 7,4 |
| Donaghadee- Port_Kale_No3_Telegraph _Cable_OOS | 347610 | 6069376 | 54° 44.909'N | 005° 22.062'W | 157 | 0,173 | 128,863 | 258,297 | 141,3 | 0,0 |
| AC_188 | 347982 | 6068878 | 54° 44.648'N | 005° 21.700'W | 152 | 0,621 | 129,485 | 257,676 | 141,3 | 6,7 |
| AC_189 | 348499 | 6067986 | 54° 44.176'N | 005° 21.191'W | 158 | 1,031 | 130,516 | 256,644 | 148,0 | 3,4 |

| ID (Position Name / Event) | WGS84 - UTM 30 N | | WGS84 | | Water Depth referred to LAT (m) | Geodetic | | | | Turning Angle (deg) |
|---|------------------|----------|--------------|---------------|---------------------------------|-----------------------|----------------------|----------------------|---------------|---------------------|
| | Easting | Northing | Latitude | Longitude | | Partial Distance (km) | KP (km) from Ardneil | RKP (km) from Wirral | Bearing (deg) | |
| AC_190 | 348663 | 6067738 | 54° 44.046'N | 005° 21.030'W | 163 | 0,297 | 130,813 | 256,347 | 144,6 | 8,9 |
| AC_191 | 348795 | 6067449 | 54° 43.893'N | 005° 20.898'W | 159 | 0,318 | 131,131 | 256,029 | 153,5 | 17,6 |
| Donaghadee-Port_Kale_No4_Coax_Cable_OOS | 348813 | 6067301 | 54° 43.813'N | 005° 20.877'W | 157 | 0,149 | 131,280 | 255,880 | 171,1 | 0,0 |
| AC_192 | 348835 | 6067128 | 54° 43.720'N | 005° 20.852'W | 155 | 0,174 | 131,455 | 255,706 | 171,1 | 3,8 |
| AC_193 | 348878 | 6066900 | 54° 43.598'N | 005° 20.804'W | 155 | 0,232 | 131,686 | 255,474 | 167,3 | 1,5 |
| AC_194 | 348932 | 6066651 | 54° 43.465'N | 005° 20.746'W | 151 | 0,255 | 131,942 | 255,219 | 165,8 | 12,0 |
| AC_195 | 349024 | 6066448 | 54° 43.357'N | 005° 20.654'W | 161 | 0,223 | 132,164 | 254,996 | 153,8 | 5,4 |
| AC_196 | 349128 | 6066265 | 54° 43.261'N | 005° 20.552'W | 164 | 0,210 | 132,374 | 254,786 | 148,4 | 5,0 |
| AC_197 | 349253 | 6065993 | 54° 43.116'N | 005° 20.427'W | 161 | 0,300 | 132,674 | 254,486 | 153,4 | 2,3 |
| AC_198 | 349395 | 6065713 | 54° 42.968'N | 005° 20.286'W | 160 | 0,314 | 132,988 | 254,173 | 151,2 | 1,0 |
| AC_199 | 349540 | 6065415 | 54° 42.810'N | 005° 20.142'W | 162 | 0,332 | 133,320 | 253,841 | 152,1 | 19,4 |
| AC_200 | 349967 | 6064993 | 54° 42.590'N | 005° 19.731'W | 162 | 0,601 | 133,921 | 253,240 | 132,8 | 18,0 |
| AC_201 | 350098 | 6064739 | 54° 42.456'N | 005° 19.602'W | 162 | 0,285 | 134,206 | 252,955 | 150,8 | 6,1 |
| AC_202 | 350234 | 6064534 | 54° 42.348'N | 005° 19.469'W | 162 | 0,247 | 134,452 | 252,708 | 144,7 | 2,3 |
| AC_203 | 350590 | 6063943 | 54° 42.036'N | 005° 19.119'W | 163 | 0,690 | 135,142 | 252,018 | 147,0 | 2,6 |
| AC_204 | 350826 | 6063508 | 54° 41.806'N | 005° 18.886'W | 164 | 0,494 | 135,637 | 251,524 | 149,6 | 20,2 |
| AC_205 | 350866 | 6063234 | 54° 41.659'N | 005° 18.841'W | 164 | 0,278 | 135,914 | 251,246 | 169,8 | 4,6 |
| AC_206 | 350930 | 6062957 | 54° 41.511'N | 005° 18.773'W | 162 | 0,284 | 136,198 | 250,962 | 165,2 | 19,9 |
| Cable Unknown_(3) | 350981 | 6062878 | 54° 41.469'N | 005° 18.723'W | 160 | 0,094 | 136,293 | 250,868 | 145,3 | 0,0 |
| Scotland-North_Ireland_1_Cable_IS | 351058 | 6062757 | 54° 41.405'N | 005° 18.647'W | 157 | 0,144 | 136,436 | 250,724 | 145,3 | 0,0 |
| AC_207 | 351206 | 6062527 | 54° 41.284'N | 005° 18.503'W | 161 | 0,273 | 136,709 | 250,451 | 145,3 | 18,3 |
| Cable Unknown_(4) | 351217 | 6062485 | 54° 41.261'N | 005° 18.491'W | 161 | 0,044 | 136,753 | 250,407 | 163,7 | 0,0 |
| AC_208 | 351261 | 6062314 | 54° 41.170'N | 005° 18.445'W | 159 | 0,177 | 136,930 | 250,231 | 163,7 | 20,4 |
| Donaghadee- | 351248 | 6062182 | 54°41.099'N | 005°18.453'W | 163 | 0,133 | 137,063 | 250,098 | 184,1 | 0,0 |

| ID (Position Name / Event) | WGS84 - UTM 30 N | | WGS84 | | Water Depth referred to LAT (m) | Geodetic | | | | Turning Angle (deg) |
|--------------------------------------|------------------|----------|--------------|---------------|---------------------------------------|-----------------------------|----------------------------|----------------------------|------------------|---------------------------|
| | Easting | Northing | Latitude | Longitude | | Partial Distance (km) | KP (km) from Ardneil | RKP (km) from Wirral | Bearing (deg) | |
| Port_Kale_No2_Telegraph Cable_OOS | | | | | | | | | | |
| AC_209 | 351241 | 6062118 | 54° 41.064'N | 005° 18.458'W | 163 | 0,064 | 137,127 | 250,034 | 184,1 | 8,6 |
| AC_210 | 351251 | 6061912 | 54° 40.954'N | 005° 18.443'W | 165 | 0,206 | 137,333 | 249,828 | 175,4 | 2,8 |
| AC_211 | 351250 | 6061639 | 54° 40.806'N | 005° 18.435'W | 165 | 0,273 | 137,606 | 249,555 | 178,2 | 17,7 |
| AC_212 | 351313 | 6061441 | 54° 40.701'N | 005° 18.371'W | 166 | 0,208 | 137,814 | 249,347 | 160,6 | 18,6 |
| AC_213 | 351434 | 6061275 | 54° 40.614'N | 005° 18.253'W | 165 | 0,206 | 138,019 | 249,141 | 142,0 | 6,2 |
| AC_214 | 351624 | 6061067 | 54° 40.505'N | 005° 18.070'W | 163 | 0,281 | 138,301 | 248,860 | 135,7 | 13,8 |
| AC_215 | 351862 | 6060907 | 54° 40.423'N | 005° 17.843'W | 158 | 0,287 | 138,588 | 248,573 | 122,0 | 18,8 |
| AC_216 | 351985 | 6060746 | 54° 40.338'N | 005° 17.724'W | 155 | 0,203 | 138,791 | 248,370 | 140,8 | 12,2 |
| AC_217 | 352131 | 6060437 | 54° 40.174'N | 005° 17.579'W | 163 | 0,342 | 139,133 | 248,028 | 152,9 | 18,8 |
| AC_218 | 352303 | 6060258 | 54° 40.081'N | 005° 17.414'W | 163 | 0,248 | 139,381 | 247,779 | 134,1 | 8,8 |
| AC_219 | 352430 | 6060079 | 54° 39.986'N | 005° 17.290'W | 170 | 0,220 | 139,601 | 247,560 | 142,9 | 5,8 |
| AC_220 | 352602 | 6059881 | 54° 39.883'N | 005° 17.125'W | 161 | 0,262 | 139,863 | 247,298 | 137,1 | 5,0 |
| AC_221 | 352851 | 6059539 | 54° 39.703'N | 005° 16.883'W | 155 | 0,423 | 140,286 | 246,875 | 142,1 | 7,4 |
| AC_222 | 352949 | 6059358 | 54° 39.607'N | 005° 16.787'W | 156 | 0,205 | 140,491 | 246,669 | 149,5 | 2,0 |
| AC_223 | 353057 | 6059143 | 54° 39.493'N | 005° 16.680'W | 156 | 0,241 | 140,732 | 246,428 | 151,6 | 2,7 |
| AC_224 | 353144 | 6058946 | 54° 39.389'N | 005° 16.593'W | 155 | 0,215 | 140,947 | 246,213 | 154,3 | 12,5 |
| AC_225 | 353220 | 6058566 | 54° 39.185'N | 005° 16.511'W | 156 | 0,388 | 141,336 | 245,825 | 166,8 | 1,6 |
| AC_226 | 353275 | 6058243 | 54° 39.012'N | 005° 16.450'W | 158 | 0,327 | 141,663 | 245,498 | 168,4 | 10,6 |
| AC_227 | 353388 | 6057939 | 54° 38.850'N | 005° 16.335'W | 160 | 0,325 | 141,988 | 245,173 | 157,8 | 0,3 |
| AC_228 | 353513 | 6057607 | 54° 38.674'N | 005° 16.209'W | 162 | 0,354 | 142,342 | 244,819 | 157,5 | 0,7 |
| AC_229 | 353682 | 6057143 | 54° 38.426'N | 005° 16.038'W | 166 | 0,495 | 142,837 | 244,324 | 158,1 | 6,3 |
| AC_230 | 353804 | 6056643 | 54° 38.159'N | 005° 15.910'W | 167 | 0,514 | 143,351 | 243,810 | 164,4 | 6,7 |
| AC_231 | 353966 | 6056209 | 54° 37.928'N | 005° 15.747'W | 169 | 0,463 | 143,814 | 243,347 | 157,8 | 4,9 |
| AC_232 | 354044 | 6055926 | 54° 37.777'N | 005° 15.666'W | 166 | 0,294 | 144,108 | 243,053 | 162,7 | 5,0 |

| ID (Position Name / Event) | WGS84 - UTM 30 N | | WGS84 | | Water Depth referred to LAT (m) | Geodetic | | | | Turning Angle (deg) |
|-------------------------------|------------------|----------|--------------|---------------|---------------------------------|-----------------------|----------------------|----------------------|---------------|---------------------|
| | Easting | Northing | Latitude | Longitude | | Partial Distance (km) | KP (km) from Ardneil | RKP (km) from Wirral | Bearing (deg) | |
| AC_233 | 354105 | 6055598 | 54° 37.602'N | 005° 15.600'W | 166 | 0,333 | 144,441 | 242,720 | 167,7 | 7,6 |
| AC_234 | 354220 | 6055242 | 54° 37.412'N | 005° 15.482'W | 164 | 0,374 | 144,815 | 242,345 | 160,1 | 0,7 |
| AC_235 | 354348 | 6054868 | 54° 37.212'N | 005° 15.352'W | 162 | 0,396 | 145,211 | 241,950 | 159,4 | 7,1 |
| AC_236 | 354443 | 6054402 | 54° 36.963'N | 005° 15.250'W | 160 | 0,475 | 145,686 | 241,474 | 166,5 | 16,3 |
| AC_237 | 354543 | 6054214 | 54° 36.864'N | 005° 15.152'W | 159 | 0,213 | 145,899 | 241,262 | 150,3 | 14,8 |
| AC_238 | 354600 | 6053967 | 54° 36.731'N | 005° 15.091'W | 158 | 0,253 | 146,152 | 241,008 | 165,1 | 9,6 |
| AC_239 | 354683 | 6053768 | 54° 36.625'N | 005° 15.008'W | 158 | 0,216 | 146,369 | 240,792 | 155,5 | 4,4 |
| AC_240 | 354747 | 6053576 | 54° 36.523'N | 005° 14.943'W | 158 | 0,203 | 146,571 | 240,589 | 159,9 | 11,2 |
| AC_241 | 354806 | 6053100 | 54° 36.268'N | 005° 14.874'W | 158 | 0,479 | 147,051 | 240,110 | 171,1 | 0,6 |
| AC_242 | 354834 | 6052888 | 54° 36.154'N | 005° 14.842'W | 157 | 0,214 | 147,264 | 239,896 | 170,5 | 12,0 |
| AC_243 | 354818 | 6052673 | 54° 36.038'N | 005° 14.850'W | 150 | 0,216 | 147,480 | 239,680 | 182,5 | 11,5 |
| AC_244 | 354759 | 6052464 | 54° 35.924'N | 005° 14.899'W | 148 | 0,217 | 147,697 | 239,463 | 194,0 | 7,4 |
| AC_245 | 354636 | 6052179 | 54° 35.769'N | 005° 15.005'W | 163 | 0,310 | 148,008 | 239,153 | 201,4 | 18,7 |
| AC_246 | 354620 | 6051974 | 54° 35.658'N | 005° 15.014'W | 161 | 0,206 | 148,214 | 238,947 | 182,7 | 20,2 |
| AC_247 | 354681 | 6051755 | 54° 35.541'N | 005° 14.951'W | 158 | 0,227 | 148,440 | 238,720 | 162,6 | 6,4 |
| AC_248 | 354856 | 6051323 | 54° 35.311'N | 005° 14.776'W | 160 | 0,467 | 148,907 | 238,254 | 156,2 | 18,1 |
| AC_249 | 354875 | 6051047 | 54° 35.162'N | 005° 14.750'W | 158 | 0,277 | 149,184 | 237,977 | 174,2 | 4,6 |
| AC_250 | 354915 | 6050775 | 54° 35.017'N | 005° 14.704'W | 157 | 0,275 | 149,459 | 237,702 | 169,6 | 19,6 |
| AC_251 | 355056 | 6050511 | 54° 34.877'N | 005° 14.565'W | 155 | 0,299 | 149,758 | 237,403 | 150,1 | 11,9 |
| AC_252 | 355200 | 6050340 | 54° 34.787'N | 005° 14.427'W | 156 | 0,223 | 149,981 | 237,180 | 138,2 | 3,1 |
| AC_253 | 355425 | 6050040 | 54° 34.629'N | 005° 14.209'W | 158 | 0,376 | 150,357 | 236,804 | 141,2 | 8,9 |
| AC_254 | 355736 | 6049457 | 54° 34.321'N | 005° 13.904'W | 159 | 0,660 | 151,017 | 236,144 | 150,1 | 8,8 |
| AC_255 | 355873 | 6049065 | 54° 34.112'N | 005° 13.765'W | 160 | 0,416 | 151,433 | 235,728 | 158,9 | 5,0 |
| AC_256 | 356219 | 6048296 | 54° 33.703'N | 005° 13.422'W | 149 | 0,843 | 152,276 | 234,884 | 153,9 | 9,7 |
| AC_257 | 356491 | 6047893 | 54° 33.491'N | 005° 13.158'W | 149 | 0,486 | 152,762 | 234,398 | 144,2 | 6,7 |

| ID (Position Name / Event) | WGS84 - UTM 30 N | | WGS84 | | Water Depth referred to LAT (m) | Geodetic | | | | Turning Angle (deg) |
|-------------------------------|------------------|----------|--------------|---------------|---------------------------------------|-----------------------------|----------------------------|----------------------------|------------------|---------------------------|
| | Easting | Northing | Latitude | Longitude | | Partial Distance (km) | KP (km) from Ardneil | RKP (km) from Wirral | Bearing (deg) | |
| AC_258 | 356613 | 6047656 | 54° 33.365'N | 005° 13.038'W | 150 | 0,267 | 153,029 | 234,132 | 150,9 | 18,0 |
| AC_259 | 356646 | 6047455 | 54° 33.258'N | 005° 13.001'W | 147 | 0,203 | 153,232 | 233,928 | 168,9 | 17,7 |
| AC_260 | 356616 | 6047254 | 54° 33.149'N | 005° 13.023'W | 144 | 0,204 | 153,436 | 233,724 | 186,6 | 14,8 |
| AC_261 | 356529 | 6047051 | 54° 33.038'N | 005° 13.098'W | 140 | 0,220 | 153,656 | 233,504 | 201,4 | 19,8 |
| AC_262 | 356389 | 6046902 | 54° 32.955'N | 005° 13.223'W | 138 | 0,205 | 153,861 | 233,299 | 221,2 | 18,1 |
| AC_263 | 356258 | 6046621 | 54° 32.801'N | 005° 13.336'W | 140 | 0,310 | 154,171 | 232,989 | 203,1 | 15,4 |
| AC_264 | 356185 | 6046181 | 54° 32.563'N | 005° 13.392'W | 139 | 0,446 | 154,617 | 232,543 | 187,7 | 1,9 |
| AC_265 | 356119 | 6045858 | 54° 32.388'N | 005° 13.443'W | 138 | 0,330 | 154,947 | 232,214 | 189,6 | 3,0 |
| AC_266 | 356073 | 6045547 | 54° 32.220'N | 005° 13.476'W | 141 | 0,315 | 155,261 | 231,899 | 186,6 | 13,7 |
| AC_267 | 356094 | 6045317 | 54° 32.096'N | 005° 13.450'W | 145 | 0,231 | 155,492 | 231,669 | 173,0 | 11,1 |
| AC_268 | 356062 | 6045003 | 54° 31.926'N | 005° 13.471'W | 146 | 0,316 | 155,808 | 231,353 | 184,0 | 17,1 |
| AC_269 | 356110 | 6044761 | 54° 31.797'N | 005° 13.419'W | 137 | 0,246 | 156,054 | 231,107 | 167,0 | 17,0 |
| AC_270 | 356414 | 6044194 | 54° 31.497'N | 005° 13.121'W | 140 | 0,644 | 156,698 | 230,463 | 150,0 | 1,2 |
| AC_271 | 356628 | 6043814 | 54° 31.296'N | 005° 12.911'W | 141 | 0,436 | 157,134 | 230,027 | 148,8 | 6,1 |
| AC_272 | 356785 | 6043595 | 54° 31.180'N | 005° 12.760'W | 143 | 0,270 | 157,404 | 229,757 | 142,7 | 19,9 |
| AC_273 | 356859 | 6043331 | 54° 31.039'N | 005° 12.684'W | 136 | 0,274 | 157,678 | 229,482 | 162,6 | 3,4 |
| AC_274 | 356942 | 6042949 | 54° 30.835'N | 005° 12.596'W | 138 | 0,391 | 158,069 | 229,092 | 166,0 | 11,3 |
| AC_275 | 356951 | 6042375 | 54° 30.525'N | 005° 12.570'W | 141 | 0,574 | 158,643 | 228,517 | 177,2 | 11,5 |
| AC_276 | 356876 | 6041973 | 54° 30.308'N | 005° 12.628'W | 146 | 0,409 | 159,052 | 228,109 | 188,8 | 19,1 |
| AC_277 | 357081 | 6040613 | 54° 29.578'N | 005° 12.399'W | 141 | 1,376 | 160,428 | 226,733 | 169,6 | 1,0 |
| AC_278 | 357229 | 6039728 | 54° 29.104'N | 005° 12.236'W | 140 | 0,897 | 161,325 | 225,836 | 168,7 | 14,4 |
| AC_279 | 357017 | 6037230 | 54° 27.754'N | 005° 12.360'W | 141 | 2,508 | 163,832 | 223,328 | 183,1 | 16,2 |
| AC_280 | 356877 | 6036866 | 54° 27.556'N | 005° 12.479'W | 136 | 0,390 | 164,222 | 222,938 | 199,2 | 16,4 |
| AC_281 | 356583 | 6036481 | 54° 27.343'N | 005° 12.740'W | 124 | 0,485 | 164,707 | 222,454 | 215,6 | 2,9 |
| AC_282 | 356201 | 6035925 | 54° 27.037'N | 005° 13.077'W | 127 | 0,675 | 165,382 | 221,779 | 212,7 | 4,2 |

| ID (Position Name / Event) | WGS84 - UTM 30 N | | WGS84 | | Water Depth referred to LAT (m) | Geodetic | | | | Turning Angle (deg) |
|-------------------------------|------------------|----------|--------------|---------------|--|-----------------------------|----------------------------|----------------------------|------------------|---------------------------|
| | Easting | Northing | Latitude | Longitude | | Partial Distance (km) | KP (km) from Ardneil | RKP (km) from Wirral | Bearing (deg) | |
| AC_283 | 355996 | 6035670 | 54° 26.897'N | 005° 13.259'W | 125 | 0,327 | 165,708 | 221,452 | 216,9 | 15,7 |
| LANIS_2_Cable_IS | 355775 | 6035512 | 54° 26.808'N | 005° 13.459'W | 121 | 0,272 | 165,980 | 221,180 | 232,7 | 0,0 |
| AC_284 | 355148 | 6035065 | 54° 26.556'N | 005° 14.025'W | 133 | 0,770 | 166,751 | 220,410 | 232,7 | 18,7 |
| AC_285 | 354674 | 6034407 | 54° 26.193'N | 005° 14.444'W | 124 | 0,811 | 167,562 | 219,599 | 214,0 | 20,5 |
| AC_286 | 354369 | 6033289 | 54° 25.586'N | 005° 14.693'W | 119 | 1,159 | 168,720 | 218,440 | 193,5 | 16,7 |
| AC_287 | 354395 | 6032198 | 54° 24.998'N | 005° 14.636'W | 121 | 1,092 | 169,812 | 217,348 | 176,8 | 0,3 |
| AC_288 | 354416 | 6031520 | 54° 24.633'N | 005° 14.597'W | 118 | 0,678 | 170,491 | 216,670 | 176,4 | 1,1 |
| AC_289 | 354435 | 6029736 | 54° 23.672'N | 005° 14.528'W | 111 | 1,785 | 172,275 | 214,885 | 177,6 | 3,4 |
| AC_290 | 354463 | 6029322 | 54° 23.450'N | 005° 14.489'W | 108 | 0,415 | 172,690 | 214,471 | 174,2 | 4,9 |
| AC_291 | 354458 | 6028995 | 54° 23.273'N | 005° 14.484'W | 112 | 0,327 | 173,018 | 214,143 | 179,1 | 3,8 |
| AC_292 | 354483 | 6028508 | 54° 23.011'N | 005° 14.447'W | 112 | 0,488 | 173,505 | 213,655 | 175,3 | 1,3 |
| AC_293 | 354567 | 6025426 | 54° 21.352'N | 005° 14.279'W | 110 | 3,083 | 176,588 | 210,572 | 176,6 | 19,8 |

Contact Details:

Further enquiries should be addressed to the following contacts:

| | |
|----------------------------|--|
| AWJ Marine | Jim Andrews <i>(who will also coordinate the Fisheries liaison for this operation)</i> jim@awjmarine.co.uk Office: +44 (0) 845-880-2540, Mobile: +44 (0) 7908-225865, |
| Prysmian Project Manager | Alberto Pirovano alberto.pirovano@prysmiangroup.com Office: +39 02 6449 33590 Mobile: +39 335 5962819 |
| Deep Ocean Project Manager | David Lothian DLothian@deepoceangroup.com Office: +44 (0) 1325 390 723 Mobile: +44 (0) 7712 870641 |
| Master of Giulio Verne | master@gverne.it VSAT: +39 0553 921155 Mobile: +39 335 5261462 SAT: 00870 773240838 |
| Master of Go Pegasus | master.gopegasus@goasia.com.sg +44 (0) 2036 959051 |

Distribution List:

abat@eircom.net
admin@welshsailing.org
Alan.Gibson@marinemanagement.org.uk
alana.murphy@rya.org.uk
alasdair.wilkie@hiberniaatlantic.com
Alec.Keep@mcga.gov.uk
andre.coccucio@mcga.gov.uk
andrew.sheen@irishferries.com
annette.stube@maersk.com
b.armstrong@sff.co.uk
barrowmc@abports.co.uk
bdeas@nffo.org.uk
blackpool@marinemanagement.org.uk
bryan.davies@heyshamport.com
businessdevelopmentdepartment3@wales.gsi.gov.uk
caroline.price@rya.org.uk, ,
CETI@Centrica.com
Charlie.Mawer@clydeport.co.uk
chris.clark@gov.im
christopherkeogh@transport.ie
'claire.storey@naturalengland.org.uk'
clive.lane@mcga.gov.uk
clyde.coastguard@mcga.gov.uk
colin.brown@mcga.gov.uk
colin.brown@mcga.gov.uk
crousing@rya.co.uk
d.obrien@cil.ie
dale.rodmeil@nffo.org.uk
MerseyMarineManagers@Peelports.com
danny.everitt@mscuk.com
dannymbrien@bge.ie
david.crowther@centrica.com
DEandT@wales.gsi.gov.uk
DeshWebCorrespondence@Wales.GSI.Gov.UK
dlw@seatruckgroup.co.uk
doe.iemonitoring@doeni.gov.uk
doug.percy@transsectormarine.co.uk
dtd@cumbriasfc.fsnet.co.uk
econsentsadmin@scotland.gsi.gov.uk
emmet.mcfadden@mutual-energy.com
emmet.mcfadden@mutual-energy.com
EnergyConsents@scotland.gsi.gov.uk
enquiries@drdni.gov.uk
erecra@talktalk.net
jon.ford@cw.com
jon.ford@vodafone.com
jonwarren@merseywharf.co.uk
josephanik@wirral.gov.uk
Joyce.johnson@mcga.gov.uk
keith.3.brooks@bt.com
keith.3.brooks@bt.com
keith.tatman@mcga.gov.uk
kenneth.poole@cemex.com
Kevin.Best@BHPBilliton.com
kingfisher@seafish.co.uk
liverpool_mo@mcga.gov.uk
lykup@dongenergy.co.uk
mail@liverpoolmarina.com
marine.operations.centre@gov.im
marine.team@bt.com
Mark.Wilber@external.eni.com
mark.woodward@steampacket.com
markthomas@wirral.gov.uk
maurice.smith@esbi.com
mdurcan@bge.ie
Michael.Brew@gov.im
michael.moore9@btinternet.com
mick.mcguckin@mutual-energy.com
MS.marinelicensing@scotland.gsi.gov.uk
n.lauder@sff.co.uk
natkinson@abports.co.uk
navigation.directorate@thls.org
navigation@nlb.org.uk
neil.wellum@marinemanagement.org.uk
nkelly@doehle-iom.com
norman.leece@mezeron.com
nridehalgh@abports.co.uk
'nwplanning@naturalengland.org.uk'
osbornted@aol.com
paul.o'rourke@eirgrid.com
paul.townsend@mcga.gov.uk
peter.hodgetts@thecrownestate.co.uk
peter.jamieson@virginmedia.co.uk
peter.jordan@sse.com
portcontrol@stenaline.com
robert.floyd@wales.gsi.gov.uk
Robert.Whiteley@naturalengland.org.uk
Ron.Bailey@clydeport.co.uk

fisheries@wales.gsi.gov.uk
Fleet.Operations@POferries.com
freighthelp@poferries.com
gedherby@wirral.gov.uk
graeme.proctor@mcga.gov.uk
Gurpal.Ghotra@mutual-energy.com
hannah.birtles@naturalengland.org.uk
hcdfiles@ukho.gov.uk
hdcf@ukho.gov.uk
hdcfiles@ukho.gov.uk
helen.elphick@thecrownestate.co.uk
holyheadcoastguard@mcga.gov.uk
hq@stratmarine.com
ian@dickies.co.uk
ianre@dongenergy.co.uk
info.uk@stenaline.com
info@clydeport.co.uk
info@mezeron.com
info@m-h-a.co.uk
info@rnli.org.uk
info@whitehavenhc.org.uk
information@detini.gov.uk
iomfishermen@manx.net
jim@awjmarine.co.uk
jmichel@north-ayrshire.gov.uk
john.bateman@shell.com
johnentwistle@wirral.gov.uk

s.alexander@sff.co.uk
s.atkins@nw-ifca.gov.uk
scalden@dsml.co.uk
sff@sff.co.uk
sprince@dsml.co.uk
stephen.hemphill@mutual-energy.com
steve.davie@xodusgroup.com
steve.gallimore@merseydocks.co.uk
Stevie.travis@mcga.gov.uk
stliv@dongenergy.co.uk
stuart.carruthers@rya.org.uk
Tariq.Amin@eni.com
tony@ramsey-steamship.com
vanoc@dongenergy.co.uk
vts.portoperations@merseydocks.co.uk
wag-en@mailuk.custhelp.com
walneytraffic@dongenergy.dk
will.calderbank@portofmostyn.com
WM.Belfast@mcga.gov.uk
WM.clyde@mcga.gov.uk
wm.holyhead@mcga.gov.uk
wm.liverpool@mcga.gov.uk
wm_holyhead@mcga.gov.uk
Wm_liverpool@mcga.gov.uk
wyn.parry@stenaline.com
XASCO@dongenergy.co.uk
xmrob@dongenergy.dk