



NOTICE TO MARINERS

No 76/15

HDD LINK BETWEEN ARDNEIL BAY AND THE KINTYRE PENINSULAR

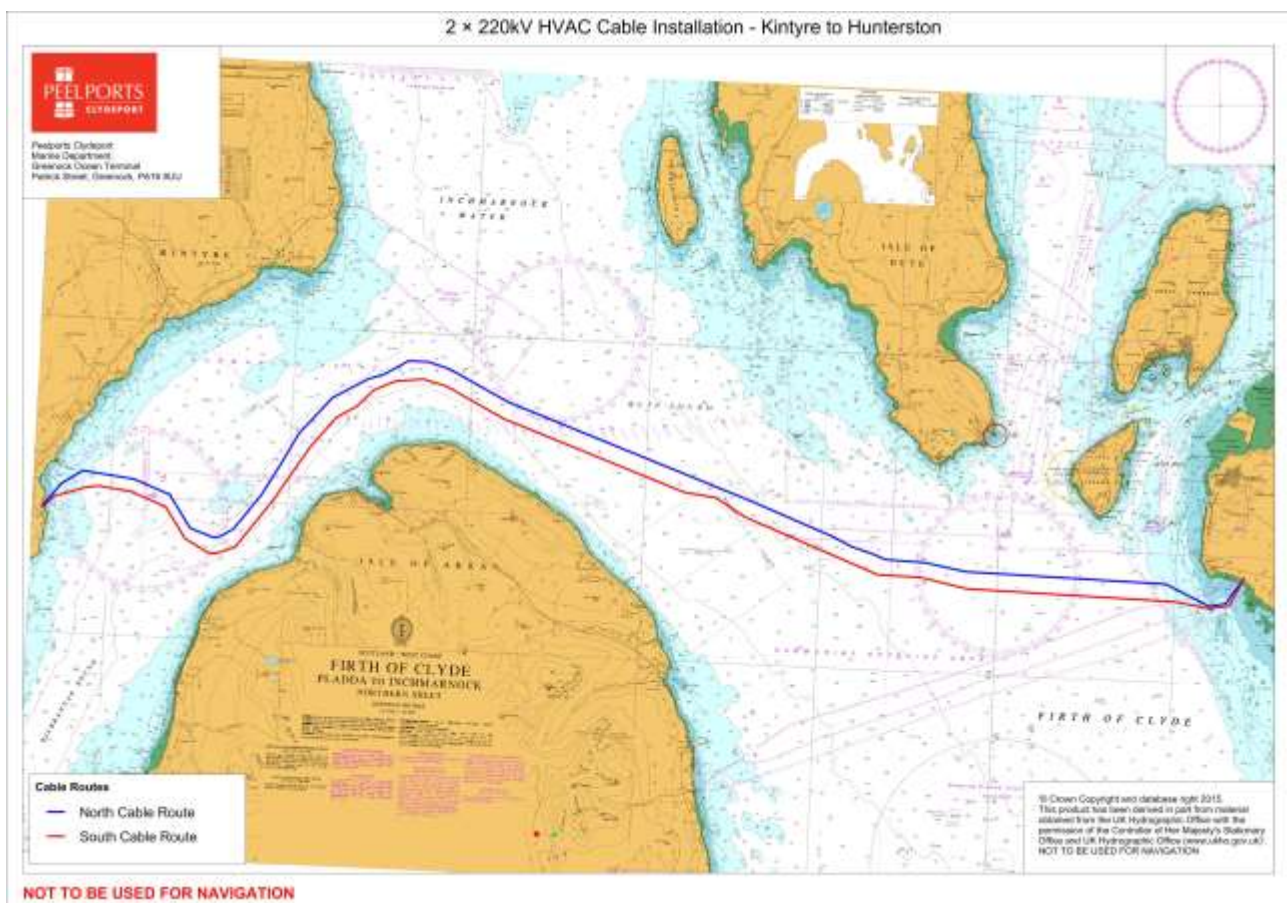
BETWEEN 55°41.74'N 004°53.36'W AND 55°41.97'N 005°26.93'W

ARDNEIL BAY TO PORT A' MHIADAIR SEABED SUBMARINE CABLE

COMPLETION AND FINAL DETAILS OF CABLE ROUTE

Charts 2131; 2221; 2383; 2491

Mariners are advised that works on the North and South underwater cables between Ardneil Bay and Port a' Mhiadair, on the Kintyre Peninsular, are now complete and the route is shown on the chartlet below.



Although the majority of the underwater cables are buried beneath the seabed, there are some areas over rock seabed where rock placement has been laid to cover and protect the cables. Full details can be found on the link to the Spreadsheet published on Peel Ports website:

B Forrest, Senior Manager Marine Operations.
Peel Ports Clydeport, Marine Department,
Greenock Ocean Terminal, Patrick Street, GREENOCK, PA16 8UU
Tel: 01475 726221 Fax: 01475 727006
Email: tower.estuary@peelports.com

NTM: 76/15
Page: 1 of 2
Valid from: 2ND November 2015
Expiry Date: 31ST December 2015



<http://www.peelports.com/wp-content/uploads/2015/01/Hunterston-Kintyre-Cables-Rock-Placement.xlsx>

The maximum height of the rock placement is 2.0 meters above the charted seabed. UKHO will update the Admiralty charts of the cable route in due course but mariners, in particular Submariners and Fishing Vessels using trawls, should be aware of these areas of 'berm' on both the North and South cable routes and should navigate with caution.

For further information contact Estuary Control ☎01475-726221 or VHF 12.