

RWE Innogy UK

Gwynt y Mor Offshore Wind Farm

Marine Coordinator Notice To Mariners

Issued by : Gwynt y Mor Marine Coordinator

Date of Issue: 01-09-15

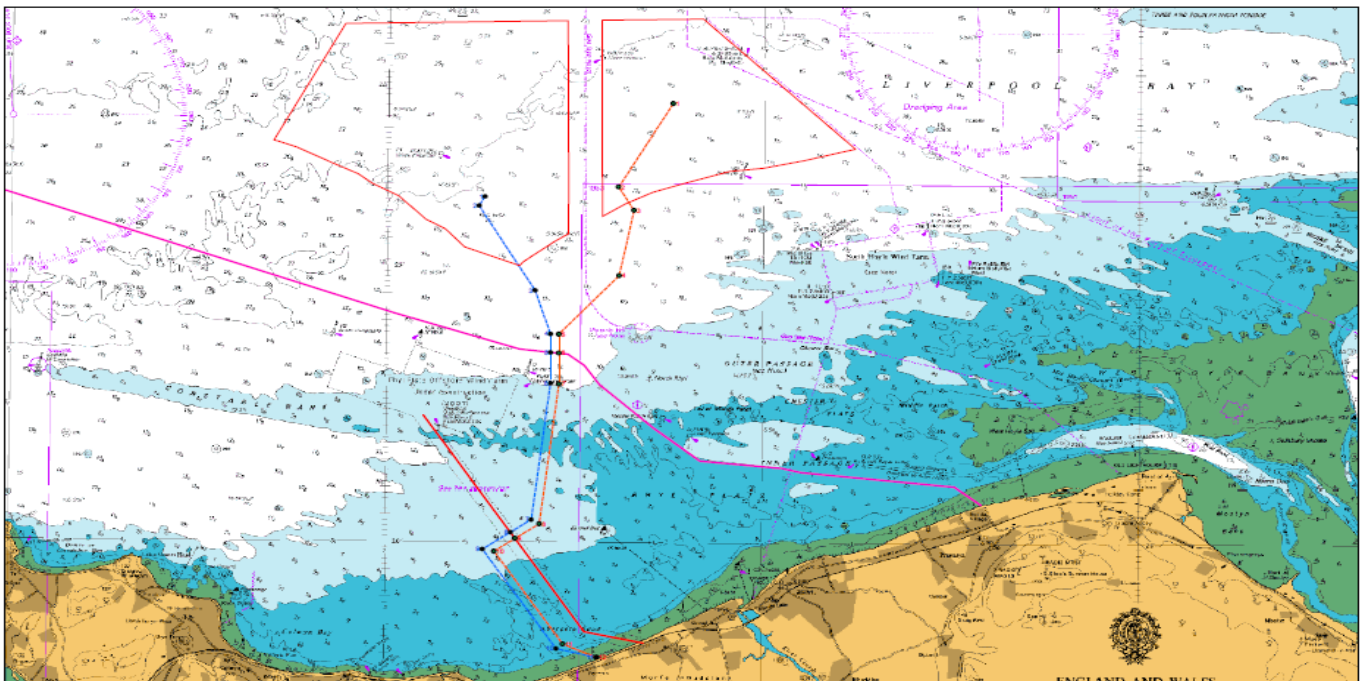
NTM no : GyM 04-2015

For enquiries on this Notice to Mariners please contact:

gareth.potts@rwe.com or 07901 009628
gym.mcc@rwe.com or 07827 244495



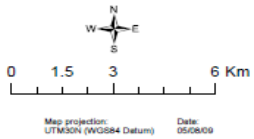
Drilling operations at H01N (53° 27.036'N 003°41.496'W) within the Gwynt Y Mor Offshore Windfarm from 05-09-2015 and 15-09-15



Gwynt y Mor Offshore Wind Farm Export Cable Route

- Legend
- Proposed Cable Route - 1st Phase
- Proposed Cable Route - 2nd Phase
- Proposed Cable Route Points - 1st Phase
- Proposed Cable Route Points - 2nd Phase
- RWY Flats export cable route
- Original cable route
- Offshore Turbine Boundary

© British Crown and SeaZone Solutions Limited.
All rights reserved.
Data Licence 052003.002
This product has been derived in part from material obtained from the UK Hydrographic Office with the permission of the Controller of Her Majesty's Stationary Office and UK Hydrographic Office (www.ukho.gov.uk).
NOT TO BE USED FOR NAVIGATION



Gwynt Y Mor Offshore Wind Farm site

Between 05-09-2015 and 15-09-15:

The Vessel '**Greatship Manisha**' will be conducting drilling operations in the vicinity of the offshore location outlined below.

'**Greatship Manisha**' is a DP vessel and will require a 500 M exclusion zone at all times during operations.

The '**Greatship Manisha**' will maintain a listening watch on VHF16 at all times.

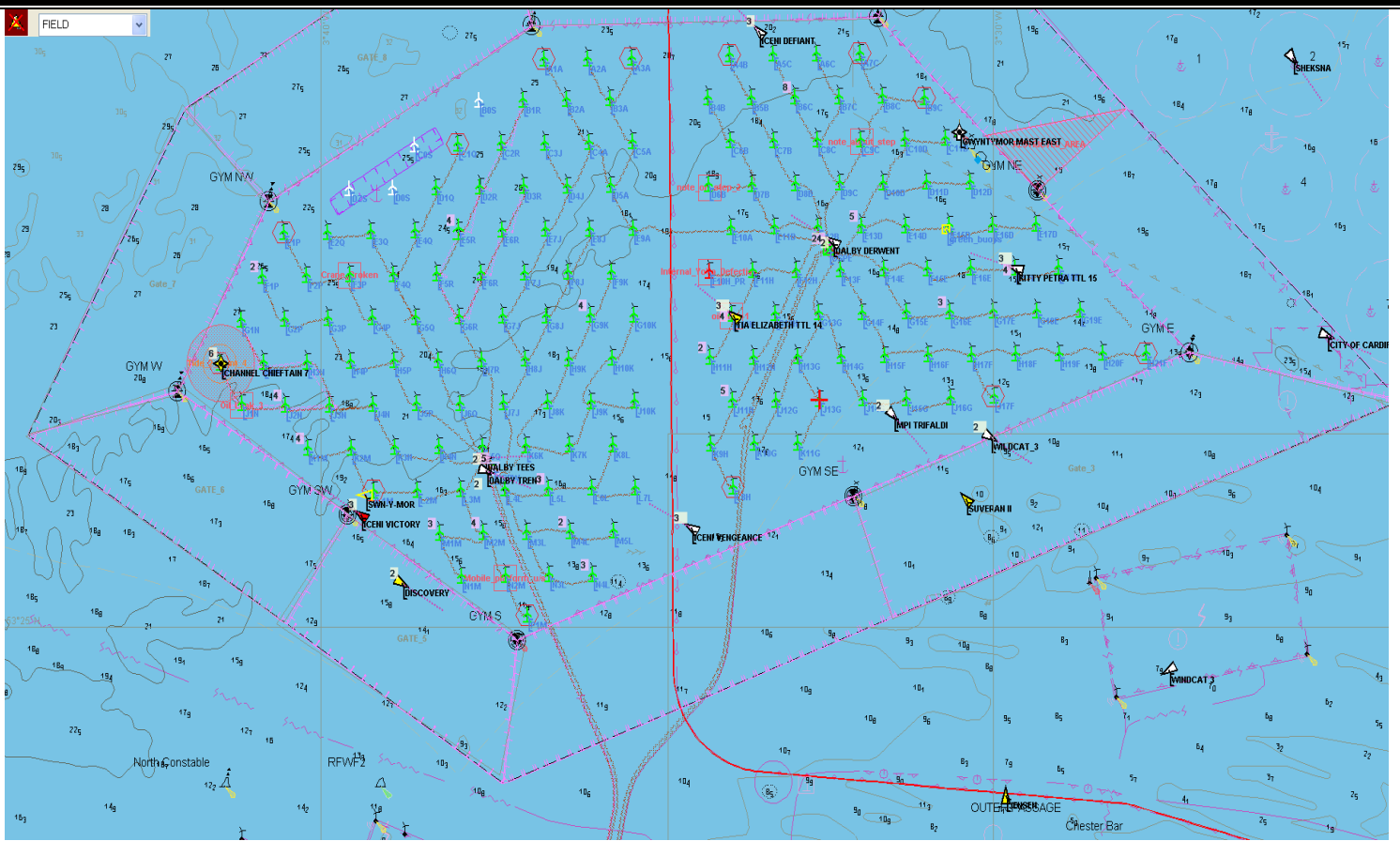
The '**Greatship Manisha**' will be connected to the seabed by a drillpipe

Locations affected:

- H1N 53° 27.036N 003°41.496W



'Greatship Manisha'



Gwynt Y Mor Offshore Wind Farm

Please forward as required