

# RWE Innogy UK

## Gwynt y Mor Offshore Wind Farm

### Marine Coordinator Notice To Mariners

Issued by : Gwynt y Mor Marine Coordinator

Date of Issue: 19-08-15

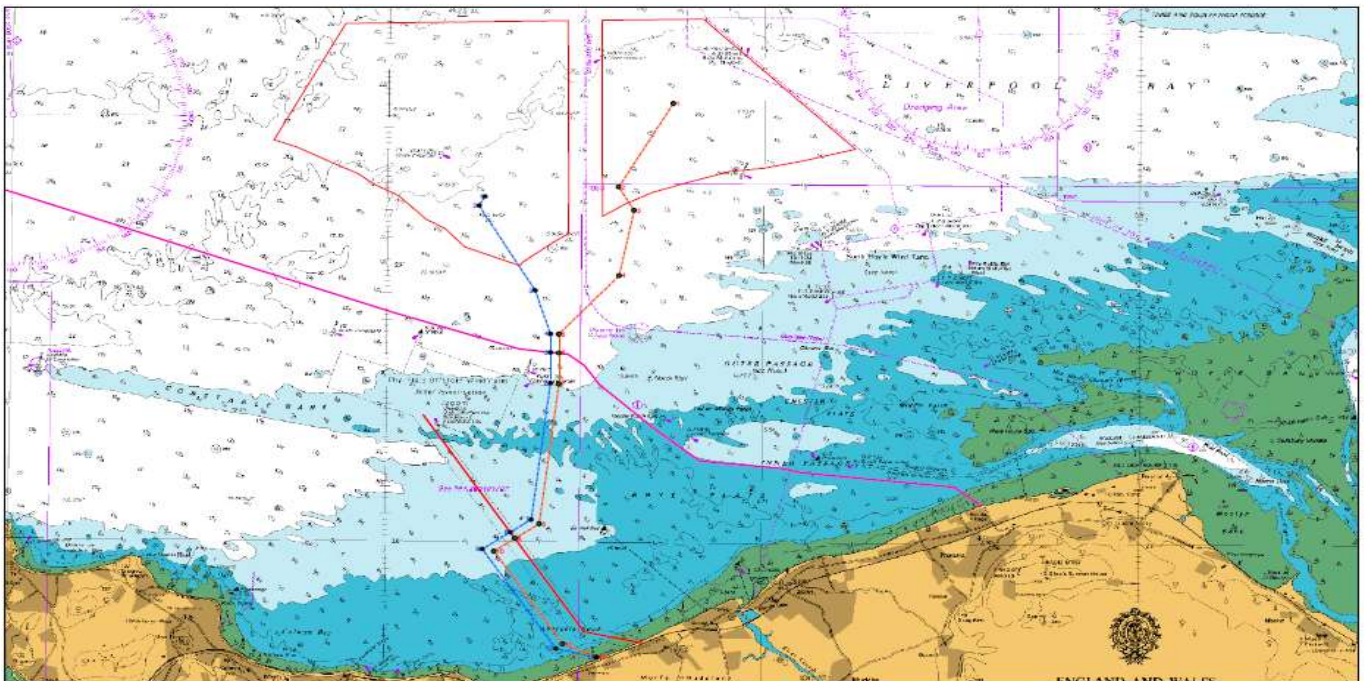
NTM no : GyM 03-2015

For enquiries on this Notice to Mariners please contact:

[gareth.potts@rwe.com](mailto:gareth.potts@rwe.com) or 07901 009628  
[gym.mcc@rwe.com](mailto:gym.mcc@rwe.com) or 07827 244495



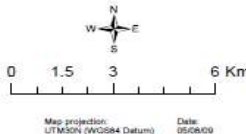
## Diving operations at various locations within the Gwynt Y Mor Offshore Windfarm from 20.08.15 – 27.08.15



Gwynt y Mor Offshore Wind Farm Export Cable Route

- Legend
- Yellow line: 1st Phase
- Blue line: 2nd Phase
- Red line: 3rd Phase
- Black line: 4th Phase
- Red line: 5th Phase
- Red line: 6th Phase
- Red line: 7th Phase
- Red line: 8th Phase
- Red line: 9th Phase
- Red line: 10th Phase
- Red line: 11th Phase
- Red line: 12th Phase
- Red line: 13th Phase
- Red line: 14th Phase
- Red line: 15th Phase
- Red line: 16th Phase
- Red line: 17th Phase
- Red line: 18th Phase
- Red line: 19th Phase
- Red line: 20th Phase
- Red line: 21st Phase
- Red line: 22nd Phase
- Red line: 23rd Phase
- Red line: 24th Phase
- Red line: 25th Phase
- Red line: 26th Phase
- Red line: 27th Phase
- Red line: 28th Phase
- Red line: 29th Phase
- Red line: 30th Phase
- Red line: 31st Phase
- Red line: 32nd Phase
- Red line: 33rd Phase
- Red line: 34th Phase
- Red line: 35th Phase
- Red line: 36th Phase
- Red line: 37th Phase
- Red line: 38th Phase
- Red line: 39th Phase
- Red line: 40th Phase
- Red line: 41st Phase
- Red line: 42nd Phase
- Red line: 43rd Phase
- Red line: 44th Phase
- Red line: 45th Phase
- Red line: 46th Phase
- Red line: 47th Phase
- Red line: 48th Phase
- Red line: 49th Phase
- Red line: 50th Phase
- Red line: 51st Phase
- Red line: 52nd Phase
- Red line: 53rd Phase
- Red line: 54th Phase
- Red line: 55th Phase
- Red line: 56th Phase
- Red line: 57th Phase
- Red line: 58th Phase
- Red line: 59th Phase
- Red line: 60th Phase
- Red line: 61st Phase
- Red line: 62nd Phase
- Red line: 63rd Phase
- Red line: 64th Phase
- Red line: 65th Phase
- Red line: 66th Phase
- Red line: 67th Phase
- Red line: 68th Phase
- Red line: 69th Phase
- Red line: 70th Phase
- Red line: 71st Phase
- Red line: 72nd Phase
- Red line: 73rd Phase
- Red line: 74th Phase
- Red line: 75th Phase
- Red line: 76th Phase
- Red line: 77th Phase
- Red line: 78th Phase
- Red line: 79th Phase
- Red line: 80th Phase
- Red line: 81st Phase
- Red line: 82nd Phase
- Red line: 83rd Phase
- Red line: 84th Phase
- Red line: 85th Phase
- Red line: 86th Phase
- Red line: 87th Phase
- Red line: 88th Phase
- Red line: 89th Phase
- Red line: 90th Phase
- Red line: 91st Phase
- Red line: 92nd Phase
- Red line: 93rd Phase
- Red line: 94th Phase
- Red line: 95th Phase
- Red line: 96th Phase
- Red line: 97th Phase
- Red line: 98th Phase
- Red line: 99th Phase
- Red line: 100th Phase

© British Crown and SeaZone Solutions Limited  
All rights reserved.  
Data Licence 002003.002  
This product has been derived in part from material obtained from the UK Hydrographic Office with the permission of the Controller of Her Majesty's Stationary Office and UK Hydrographic Office (www.ukho.gov.uk)  
NOT TO BE USED FOR NAVIGATION



## Gwynt Y Mor Offshore Wind Farm site

Between 20-08-15 and 27-08-15:

The Vessel '**Channel Chieftain VII**' will be conducting diving operations in the vicinity of the offshore locations outlined below.

'**Channel Chieftain VII**' will be using anchors to position and will require a 500 M exclusion zone at all times during operations.

The '**Channel Chieftain VII**' will maintain a listening watch on Digipool 1, VHF14 and VHF16 at all times.

The '**Samson B**' crew transfer vessel will be carrying out daily crew changes from Liverpool for the '**Channel Chieftain VII**'.

Locations affected:

- H1N            53° 27.036N    003°41.496W
- F1P            53° 27.720N    003°40.832W
- J6Q            53° 26.703N    003°37.907W
- B1R            53° 29.083N    003°37.001W
- N1M            53° 25.362N    003°37.899W
- M3L            53° 25.731N    003°36.940W
- D6B            53° 28.416N    003°34.236W
- H16F           53° 27.117N    003°30.958W
- MET MAST 53° 28.843N    003°30.505W



'Channel Chieftain 7'

