



NOTICE TO MARINERS

No 36/15

HDD LINK BETWEEN ARDNEIL BAY AND THE KINTYRE PENINSULAR

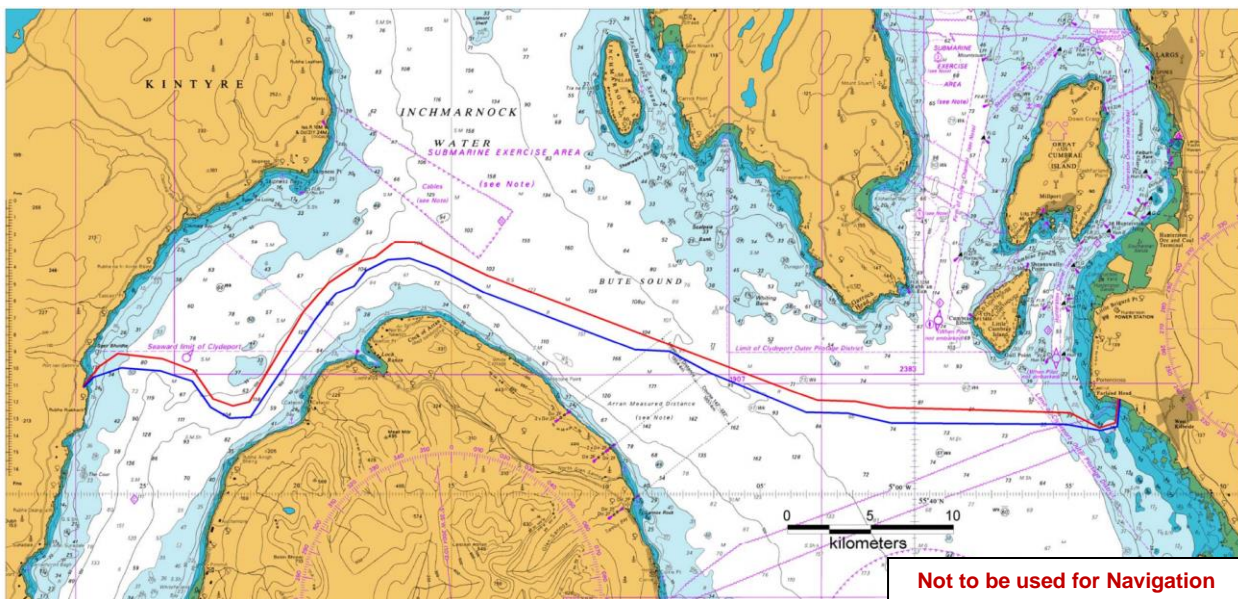
BETWEEN 55°41.74'N 004°53.36'W AND 55°41.97'N 005°26.93'W

ARDNEIL BAY TO PORT A' MHIADAIR SEABED SUBMARINE CABLE INSTALLATION

Chart 2131

Mariners are advised that an underwater seabed grapnel run, cable laying and burial from Ardnail Bay to Port a' Mhiadair, on the Kintyre Peninsular, will take place between on and about Saturday 9th May 2015 until, on and about, Tuesday 9th June 2015.

The underwater operations will be carried out between 55°41.74'N 004°53.36'W and 55°41.97'N 005°26.93'W and the route is illustrated on the diagram below:



There will be three areas of operations, two inshore and one offshore, which will include grapnel runs, installation of mattressing and boulder clearance:

Inshore: At Ardnail Bay and Port a' Mhiadair from the shoreline to the 15 metre contour, using Briggs Marine Divers and their support/inshore work boat the FORTH CONSTRUCTOR. See Photograph 1:

KIM Clark, Senior Marine Manager.
Peel Ports Clydeport, Marine Department,
Greenock Ocean Terminal, Patrick Street, GREENOCK, PA16 8UU
Tel: 01475 726221 Fax: 01475 727006
Email: lower_estuary@pelports.com

NTM: 36/15
Page: 1 of 3
Valid from: 6th May 2015
Expiry Date: 31st December 2015



Photograph 1 – FORTH CONSTRUCTOR

Briggs Marine Divers will conduct the installation of the Mattresses from the shoreline to the 15 metre contour depth. These operations will take place day and night, commencing on or about Saturday 9th May 2015. The vessel will be displaying appropriate shapes, lights and flags for their operations and all vessels are to maintain a safe distance and operate at reduced speed with due regard to the effects of wash.

Offshore: From the 15 metre contour off Ardnail Bay to the 15 metre contour off Port a' Mhiadair, the grapnel runs will be conducted by Offshore Tug KINGDOM OF FIFE , see photograph 2, which will be towing a grapnel underwater along the seabed and will be **Restricted in its Ability to Manoeuvre**.



Photograph 2 – Tug KINGDOM OF FIFE



Whilst KINGDOM OF FIFE is operating and Restricted in its Ability to Manoeuvre, all vessels operating within this area are to keep clear of the KINGDOM OF FIFE, 500 metres ahead, 1000 metres abeam and astern of the vessel to maintain a safe distance.

During operations the vessels will display the appropriate day shapes/signals and at times of reduced visibility the appropriate lights as required by the IRPCS. The vessels will also actively transmit an AIS signal. A continuous listening watch will be maintained on VHF Channel 16 and 12 DSC. Vessels are to call the Cable Guardship (see NTM 37/15 for detail) for direction on VHF Channel 16 if unsure on her activity and for information on operating areas at that time.

For further information contact Estuary Control ☎01475-726221 or VHF 12.