

RWE Innogy UK
Gwynt y Mor Offshore Wind Farm
Marine Coordinator Notice To Mariners

Issuer : Gwynt y Mor Marine Coordinator

Date of Issue: 20.04.15

NTM no : 002/2015

For enquiries on this Notice to Mariners please contact:

lee.cornwell@rwe.com or 07557 319473

gym.mcc@rwe.com or 07827 244495



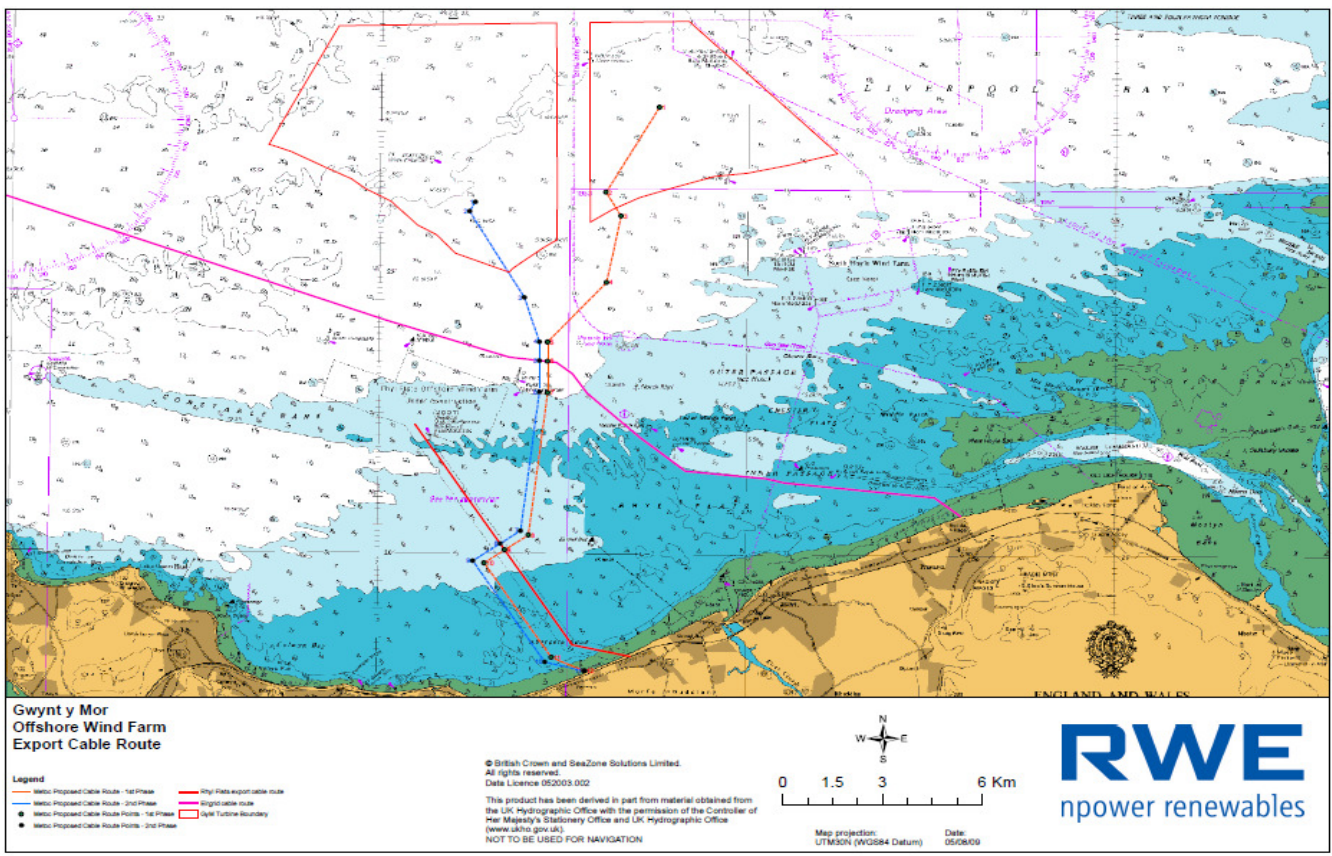
Removal of GyM field perimeter cardinal buoys

Duration: On or around 25th April 2015

Please be advised that on or around 25th April 2015, Trinity House Vessel (THV) Galatea is expected to arrive on location to recover the 8 GyM field cardinal perimeter buoys. At the same time, THV Galatea will reposition the GyM S buoy to a new permanent position.

While the vessel is on location, all vessels are to give a wide berth when buoy recovery operations are underway. THV Galatea can be contacted on VHF 16.

Post recovery, the wind farm will be exhibiting permanent aids to navigation; these are attached to this NTM. The United Kingdom Hydrographic Office will update the British Admiralty charts in accordance with the permanent aids on display and in the interim; intend to issue a preliminary notice to mariners.



Admiralty Chart Layout of Gwynt y Mor including Export Cable Routes

Navigation Buoy Layout at Gwynt y Mor Offshore Wind Farm

Green – Reposition

Red - Recover

Name	Buoy Type	Light Charac	Latitude	Longitude
GYM S	Red Can	Fl R 2.5s	53 deg 24'.90N	003 deg 37'.08W.
GYM SW	Special Mark	Fl Y 2.5s	53 deg 25'.87N	003 deg 39'.60W
GYM W	West Cardinal	VQ(9) 10s	53 deg 26'.832N	003 deg 42'.129W.
GYM NW	West Cardinal	Q(9) 15s	53 deg 28'.303N	003 deg 40'.772W
GYM NNW	North Cardinal	Q	53 deg 29'.670N	003 deg 36'.857W
GYM N	North Cardinal	VQ	53 deg 29'.735N	003 deg 31'.710W
GYM NE	Special Mark	Fl Y 2.5s	53 deg 28'.390N	003 deg 29'.340W
GYM E	East Cardinal	VQ(3) 5s	53 deg 27'.130N	003 deg 27'.078W
GYM SE	Special Mark	Fl Y 2.5s	53 deg 26'.015N	003 deg 32'.080W



THV Galatea

Distribution: Please forward onto all that may be affected by this notice