

**RWE npower renewables**  
**Gwynt y Mor Offshore Wind Farm**  
**Marine Coordinator Notice To Mariners**

Issuer : Gwynt y Mor Marine Coordinator

Date of Issue: 26.01.14

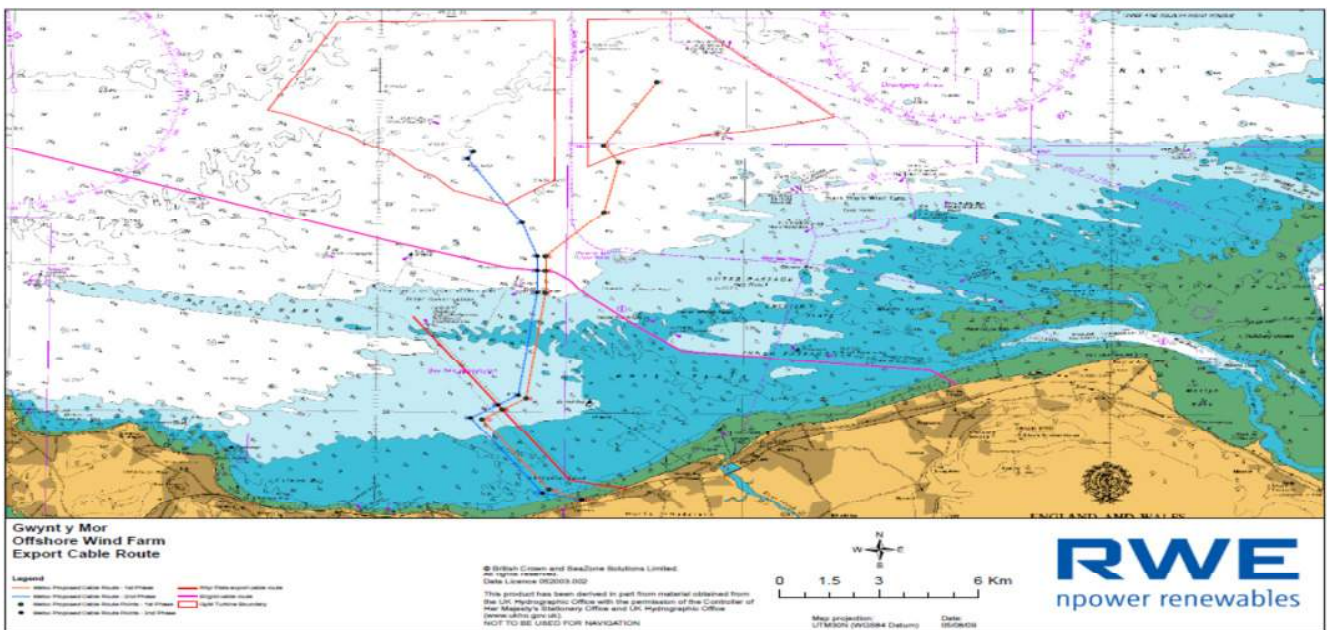
NTM no : GyM 03-2014

For enquiries on this Notice to Mariners please contact:

[lee.cornwell@rwe.com](mailto:lee.cornwell@rwe.com) or 07557 319473  
[gym.mcc@rwe.com](mailto:gym.mcc@rwe.com) or 07827 244495



**Inter Array cable installation vessels Sia and Fugro Saltire and supporting craft working within the Gwynt y Mor Offshore Wind Farm**  
**From 26<sup>th</sup> January 2014 until further notice.**



The CLV Sia and the MV Fugro Saltire will be engaged in the installation of inter array cables on the Gwynt y Mor offshore wind farm from 26<sup>th</sup> Jan 2014 until further notice. Sia will be laying cable between assets and the Fugro Saltire will deploy a sub-surface trenching ROV to create a trench and then bury the cables.

These vessel's will be supported in the operations by the following craft: MV Line (a small survey vessel), HBC Supporter (a small diving vessel) utilising a 4 point mooring system. There will also be 3 Workboat / crew transfer vessel's involved, CTV Achiever, CTV Transporter and MCS Zephyr, the CTV's will transit between the site and Liverpool on a daily basis.

All vessel's will work within the GYM site boundary and any involved in cable operations, survey or diving operations will require a 500m Exclusion zone.

The vessels will monitor the Project private radio channels and VHF CH16 at all times.

**Fishermen should be aware there will be occasions when subsea cables remain unburied and unprotected until trenched into the sea bed within the demarcation of the wind farm. To this end they should keep in touch with the Marine Coordination Centre on 0151 210 2388 or mob 07827 244495 and VHF16 so that they can be given the latest information on this situation.**

**Cable laying vessel SIA**



**Cable laying vessel SIA**



**MV Fugro Saltire**



**Dive vessel HBC Supporter**



**Survey vessel MV Line**



**MCS Zephyr (CTV / Support vessel)**



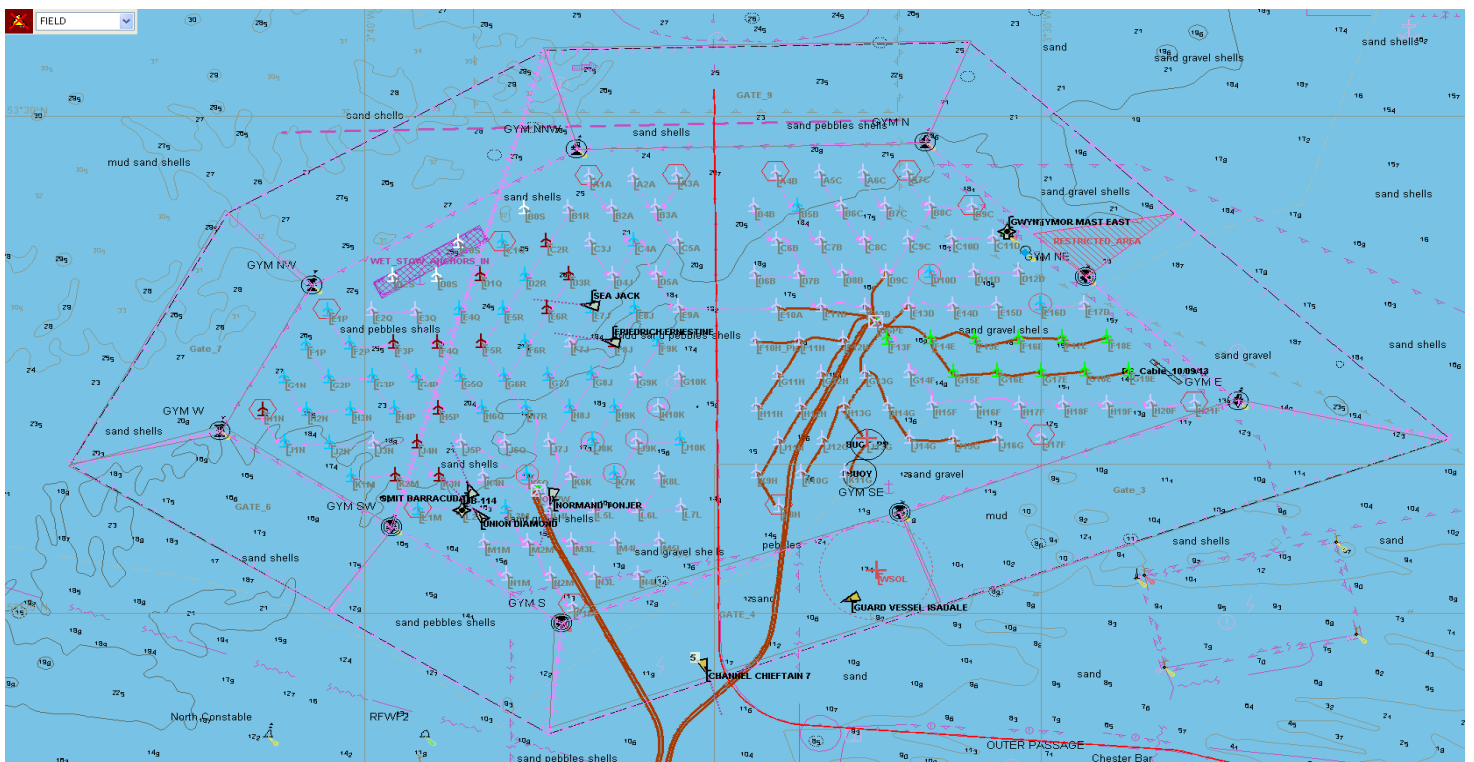
**Achiever (CTV/Support vessel)**



**Transporter (CTV/Support vessel)**



### Gwynt y Mor offshore wind farm



**Distribution: As per GyM Notices To Mariners Distribution List. Please feel free to share the information.**

**If you don't wish to receive updated notices for the project, please contact the person(s) named above.**