

RWE npower renewables  
Gwynt y Mor Offshore Wind Farm  
Marine Coordinator Notice To Mariners

Issuer : GyM Marine Coordinator

Date of Issue: 20.03.13

NTM no : GYM-004-13

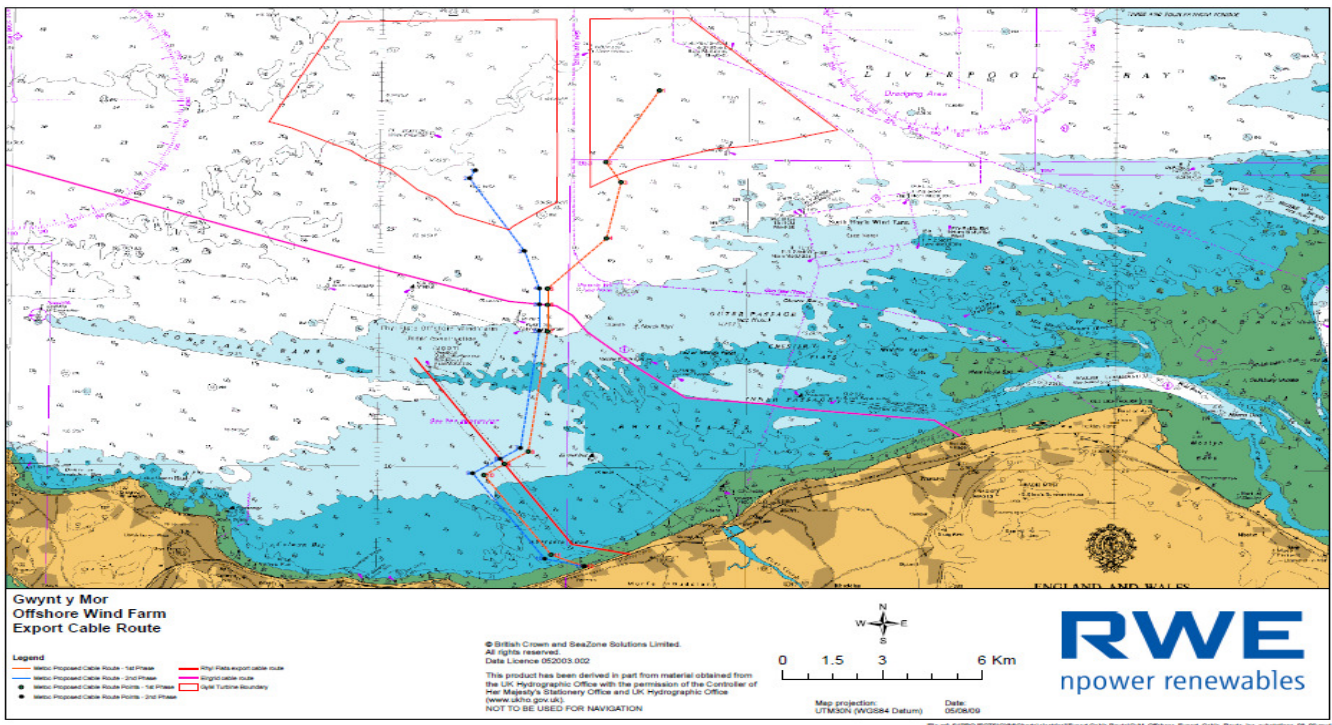
For enquiries on this Notice to Mariners  
please contact:

[lee.cornwell@rwe.com](mailto:lee.cornwell@rwe.com) or 07557 319473  
[gym.mcc@rwe.com](mailto:gym.mcc@rwe.com)  
or 07827 244495



**Commencement of WTG Installation works at Gwynt y Mor**  
**Duration: Commencing 5th April 2013 until further notice**

Please be advised that Wind Turbine Generator [WTG] installation works will commence on the 5<sup>th</sup> April 2013. The Turbine installation vessel Sea Jack will be the first installation vessel on site from the 5<sup>th</sup> April 2013, and will be joined by another installation vessel the Sea worker at a later date. The Sea Jack will be towed out of Mostyn to the Gwynt y Mor offshore wind farm site on a regular basis, the tugs involved with the Sea Jack will be the Sea Golf and the Bever. These vessel's will be conducting operations within the Gwynt y Mor offshore wind farm site at various locations, and when on location will require a 1000m clearance at all times. During transit to/from the port of Mostyn the vessel should receive the appropriate clearance for a Tug and tow. The vessel will monitor VHF CH 16 at all times.



Admiralty Chart Layout of Gwynt y Mor including Export Cable Routes



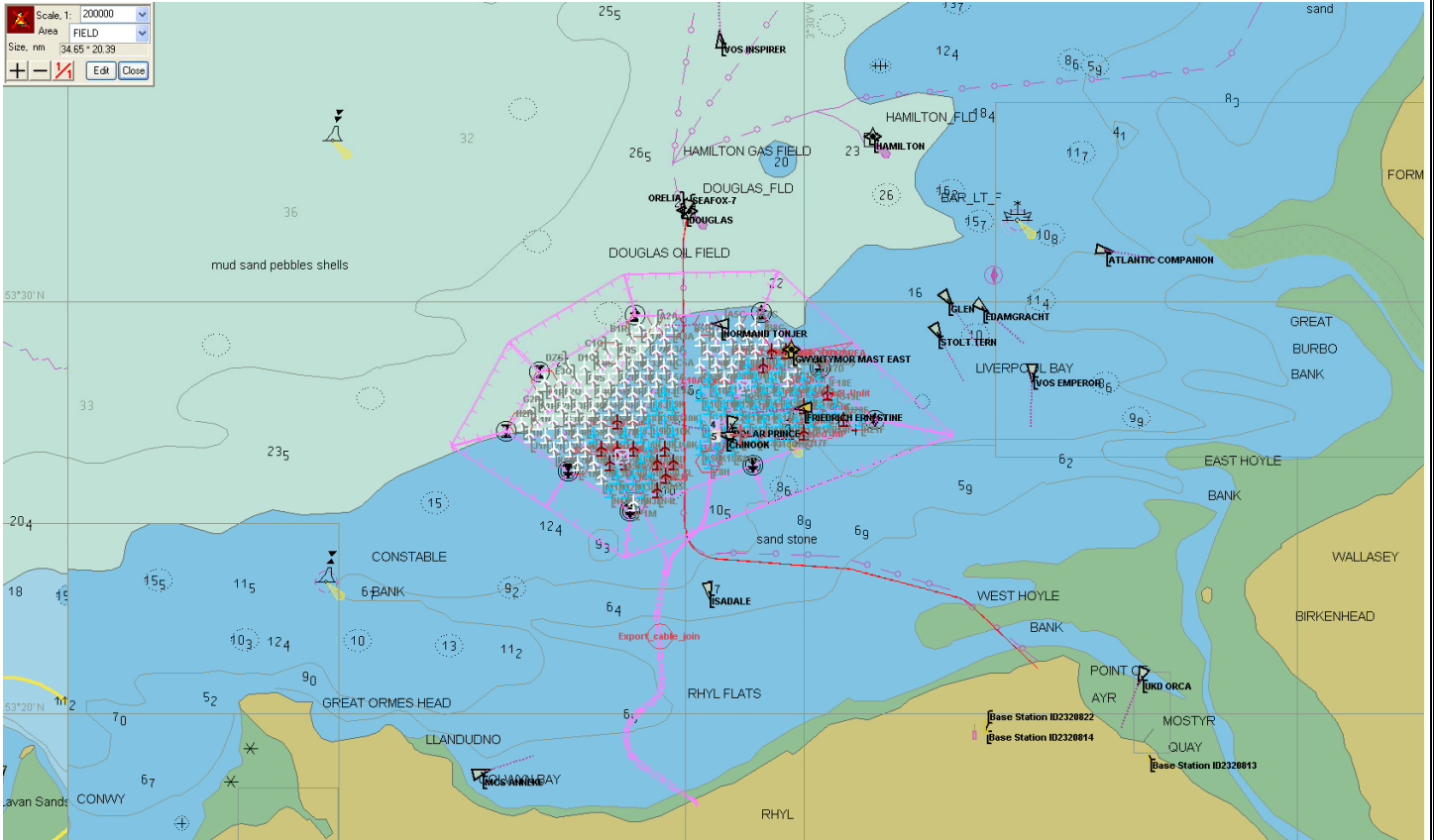
**A2Sea Sea Jack[self elevating Turbine installation vessel]**



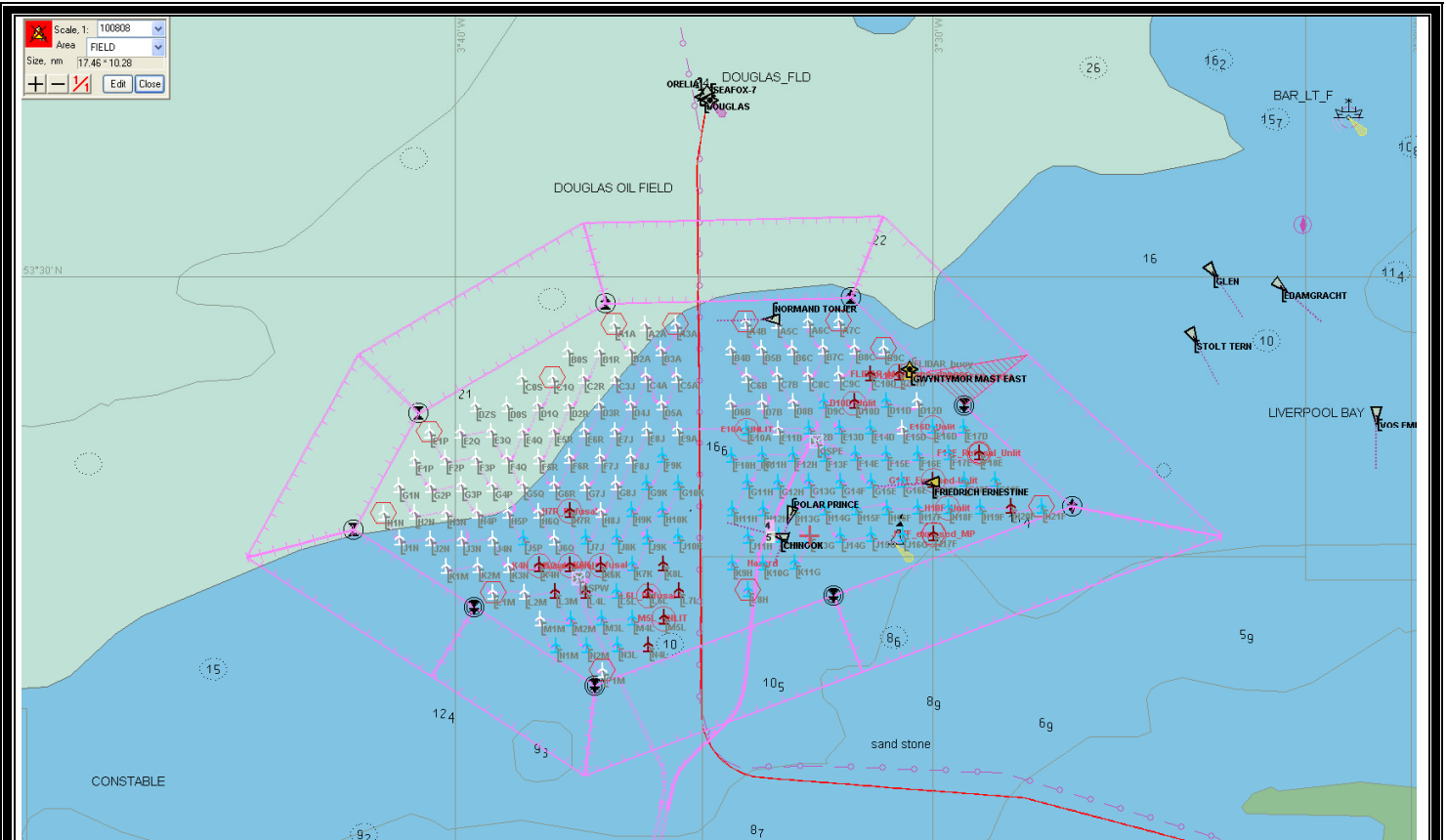
**Sea Golf (Anchor Handling Tug)**



**Bever (Anchor Handling Tug)**



**View of site in relation to coastline**



**View of site and demarcation buoys**

**Distribution: As per GyM Notices To Mariners Distribution List. Please feel free to share the information.**

**If you don't wish to receive updated notices for the project, please contact the person(s) named above.**