

**RWE npower renewables**  
**Gwynt y Mor Offshore Wind Farm**  
**Marine Coordinator Notice To Mariners**

**Issuer : GyM Marine Coordinator**

**Date of Issue: 20.03.13**

**NTM no : GYM-003-13**

For enquiries on this Notice to Mariners  
please contact:

[lee.cornwell@rwe.com](mailto:lee.cornwell@rwe.com) or 07557 319473  
[gym.mcc@rwe.com](mailto:gym.mcc@rwe.com)  
or 07827 244495



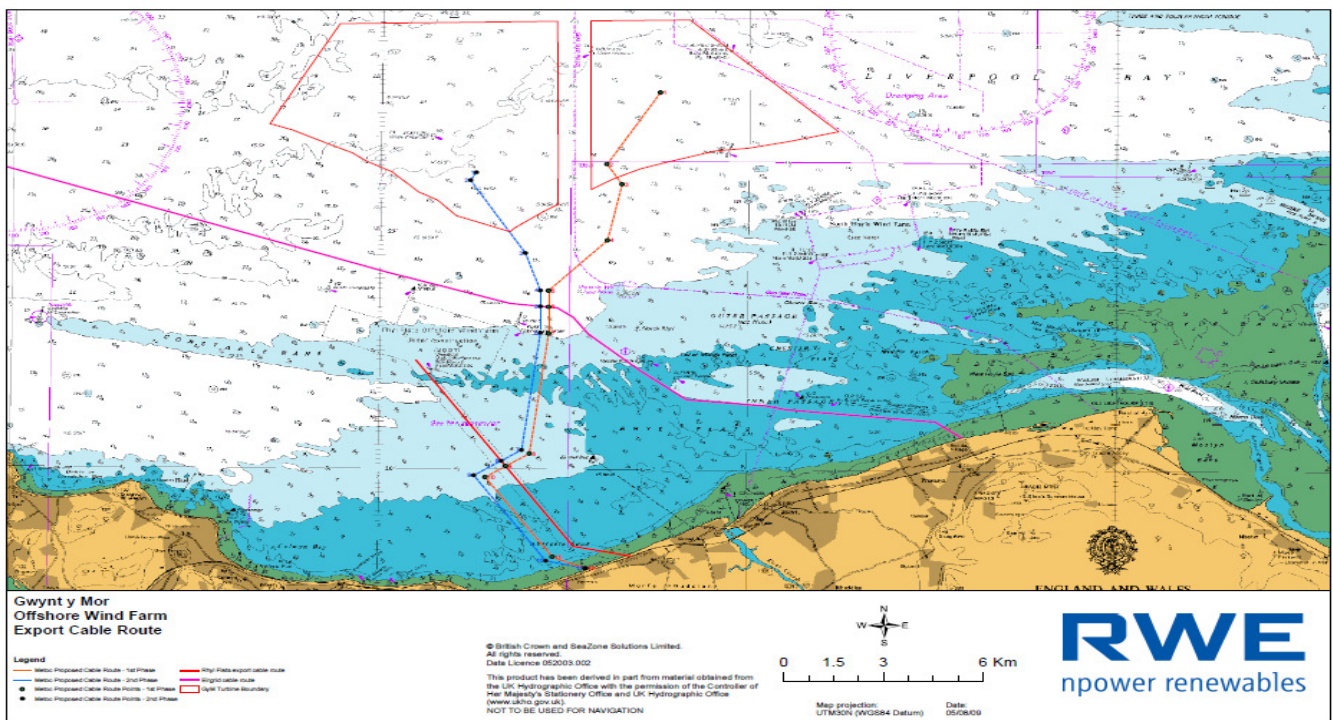
**Commencement of Export Cable Jointing works at Gwynt y Mor**  
**Duration: Commencing 1<sup>st</sup> April 2013 for Approximately 1 Month**

Please be advised that the Stemat 89 assisted by Anchor handling support tugs Nova K and Tessa W, Fenna B, and Towing vessel Coastal Vanguard, will be jointing the Gwynt y Mor wind farm Export cable at a position detailed below, work expected to take approx 1 Month from start date.

The Stemat 89 has a 6 point mooring system and will require a 1000m Exclusion zone when on location and will deploy anchors with buoys. The vessels will be operating At the positions detailed below and indicated on the Chart picture on page 4.  
**Cable 1** (1<sup>st</sup> end laid from the beach) Lat: 53 deg 21.94159' N Long: 003 deg 35.80597' W. (KP 10.124). The cable has a 40m wire pennant laid along the route from the cable end. At the end of this 40m wire is a 1m wire pennant as a riser with a subsea plough float attached.

**Cable 1** (2<sup>nd</sup> end from OSP East) Lat: 53 deg 21.73746' N Long: 003 deg 35.79205' W. (KP 9.745). The cable has a 22m wire pennant laid along the route from the cable end. At the end of this 22m wire is a 1m wire pennant as a riser with a subsea plough float attached.

**VHF 16** will be monitored at all times.



**Admiralty Chart Layout of Gwynt y Mor including Export Cable Routes**



**Stemat 89 Cable Jointing Vessel[Multi purpose barge]**

**[lead Tug]  
Coastal Vanguard**



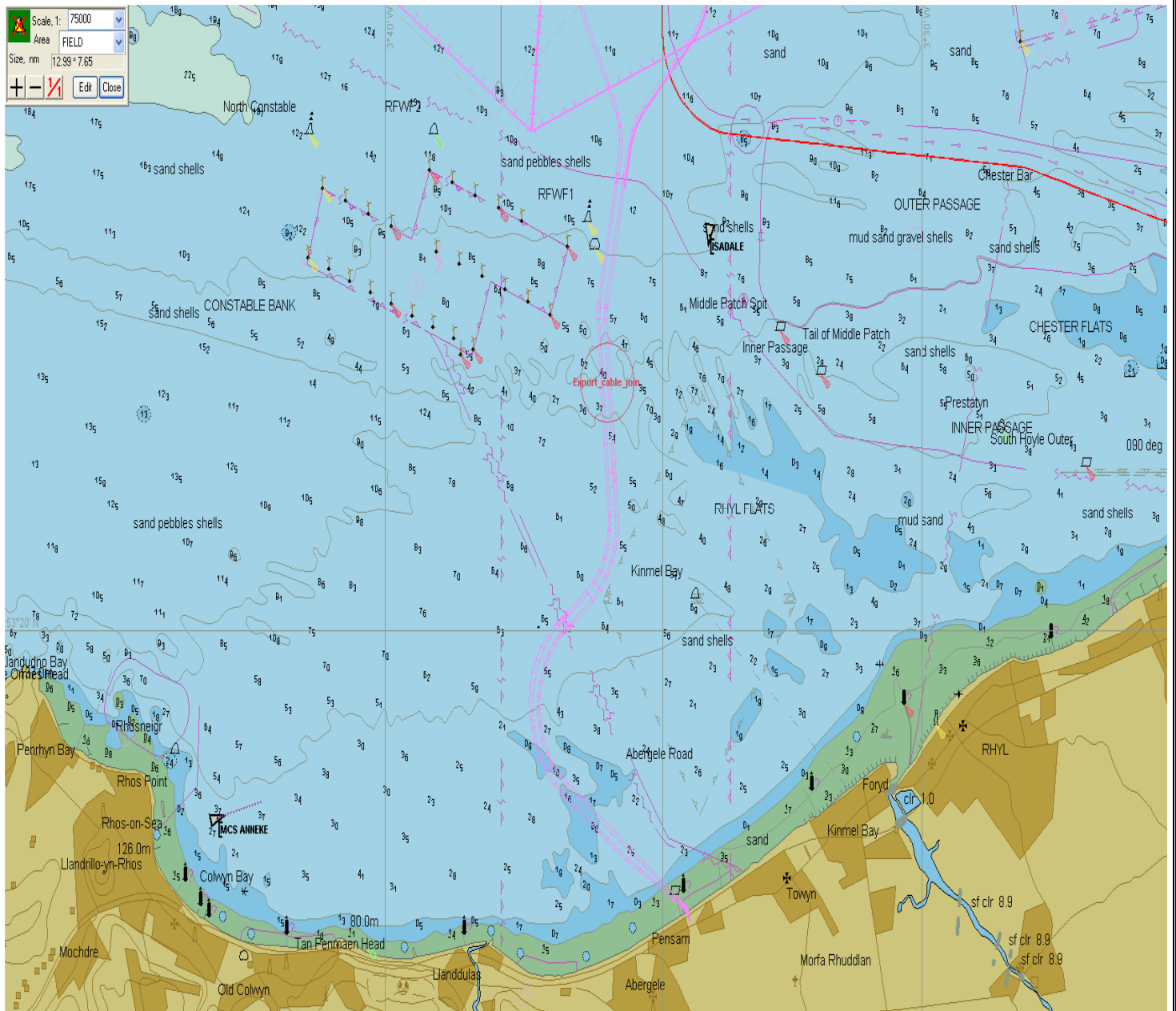


**Nova K [Support vessel]**



**Tessa W [Support Vessel]**

**At present [no Picture for Fenna B] [Support vessel]**



**Above Diagram shows work location in relation to the North Welsh coast**

**Distribution: As per GyM Notices To Mariners Distribution List. Please feel free to share the information.**

**If you don't wish to receive updated notices for the project, please contact the person(s) named above.**