

**RWE npower renewables**  
**Gwynt y Mor Offshore Wind Farm**  
**Marine Coordinator Notice To Mariners**

**Issuer : Gwynt y Mor Marine Coordinator**

**Date of Issue: 08/03/2013**

**NTM no : GYM - 002/2013**

For enquiries on this Notice to Mariners please contact:

[lee.cornwell@rwe.com](mailto:lee.cornwell@rwe.com) or 07557 319473  
[gym.mcc@rwe.com](mailto:gym.mcc@rwe.com) or 07827 244495



**Survey of Export Cable**

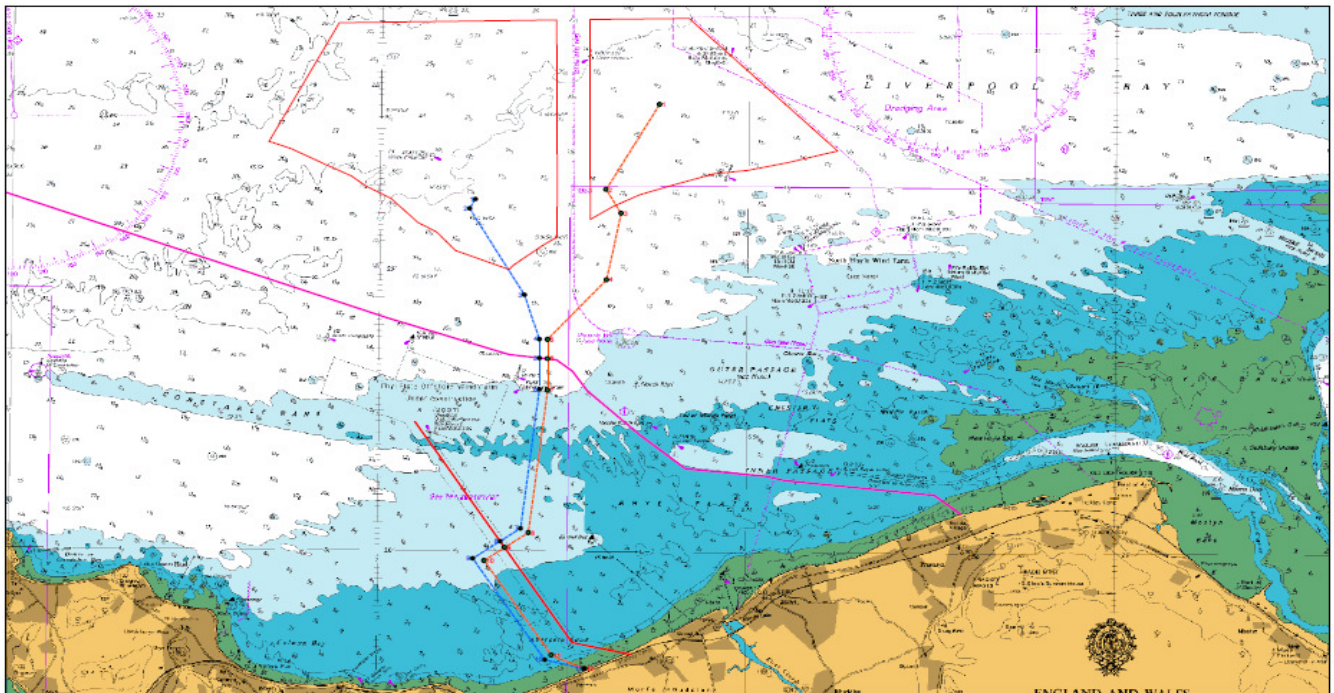
**Duration: 13/03/13 for 1 week approx**

Please be advised that the survey of Subsea Export Cable No.1 (orange line, coming from the shore on the chart below) will commence from Wednesday 13/03/13 for approx 1 week (Subject to final approval).

The works will be carried out by the survey vessel Lia.

The vessel will be working to the south of the GYM field in approx position 53 22' N 003 36'W and will require a 500m safety zone;

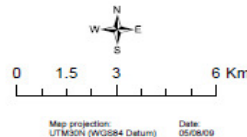
MV Lia will be towing survey equipment from her stern. MV Lia can be contacted on VHF 16 at all times.



**Gwynt y Mor Offshore Wind Farm Export Cable Route**

- Legend**
- 1st Phase Export Cable Route - 1st Phase
  - 1st Phase Export Cable Route - 2nd Phase
  - 1st Phase Export Cable Route Points - 1st Phase
  - 1st Phase Export Cable Route Points - 2nd Phase
  - 2nd Phase Export Cable Route
  - 2nd Phase Export Cable Route
  - 2nd Phase Export Cable Route
  - 2nd Phase Export Cable Route

© British Crown and SeaZone Solutions Limited.  
All rights reserved.  
Date Licence 05/2005.002  
This product has been derived in part from material obtained from the UK Hydrographic Office with the permission of the Controller of Her Majesty's Stationery Office and UK Hydrographic Office (www.ukho.gov.uk).  
NOT TO BE USED FOR NAVIGATION

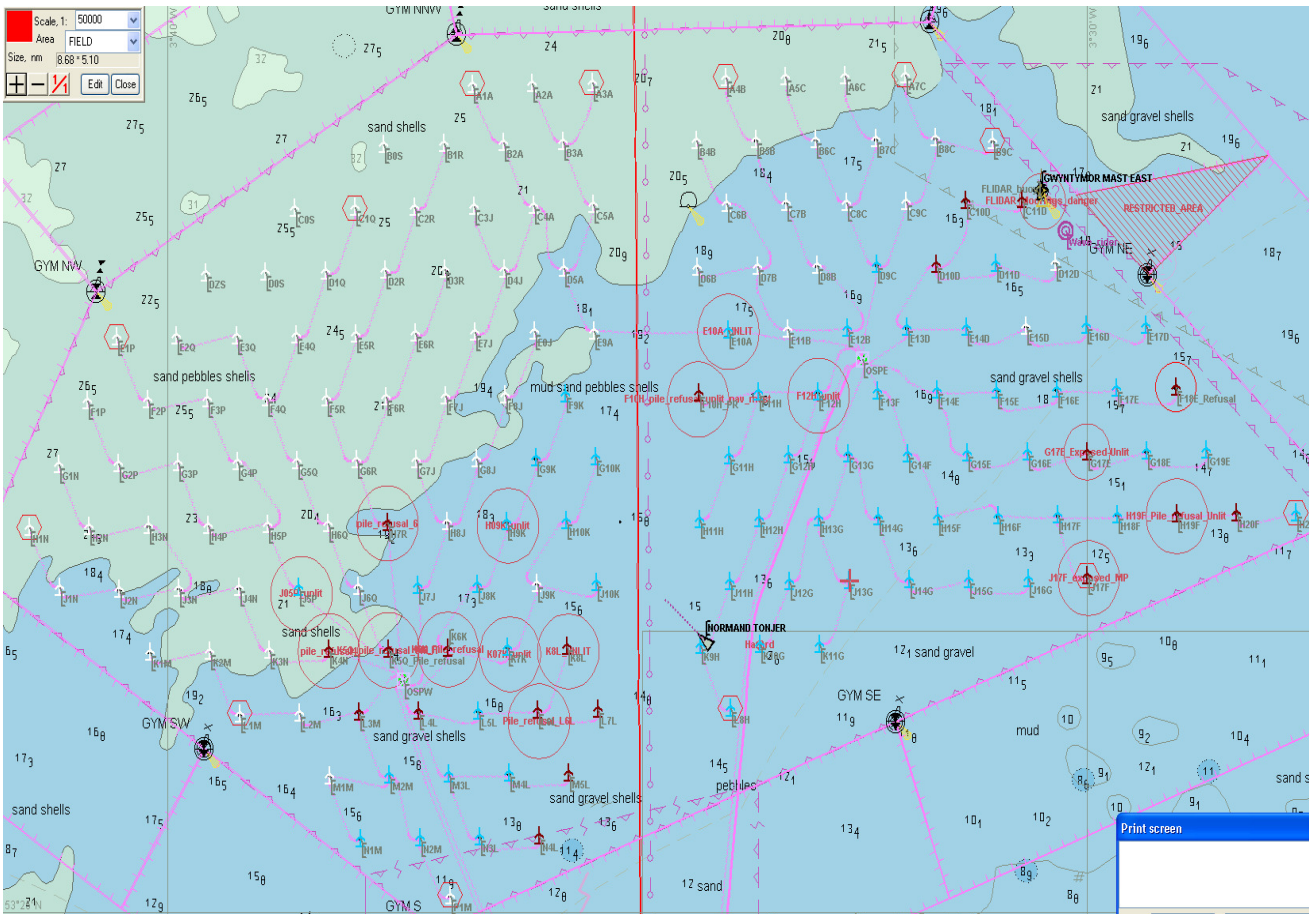


**Admiralty Chart Layout of Gwynt y Mor Windfarm including Export Cable Routes**

**Survey Vessel "Lia"**



**Wind Turbine Generator Layout**



**Distribution: As per GyM Notices To Mariners Distribution List. Please feel free to share the information.**

**If you don't wish to receive updated notices for the project, please contact the person(s) named above.**

