

## Notice to Mariners – Frame Deployments

Partrac will remove seabed frames from the locations below between Mon 30/04/12 and Wed 02/05/12, weather dependent.

All positions are WGS84.

Site	Long_DD	Lat_DD	Longitude	Latitude
1	-4.57973	53.41835	4°34'47.04"W	53°25'06.04"N
5	-4.58398	53.41931	4°35'02.34"W	53°25'09.53"N

The vessel *Seekat C* will be used (Catamaran, approx. 11m in length).

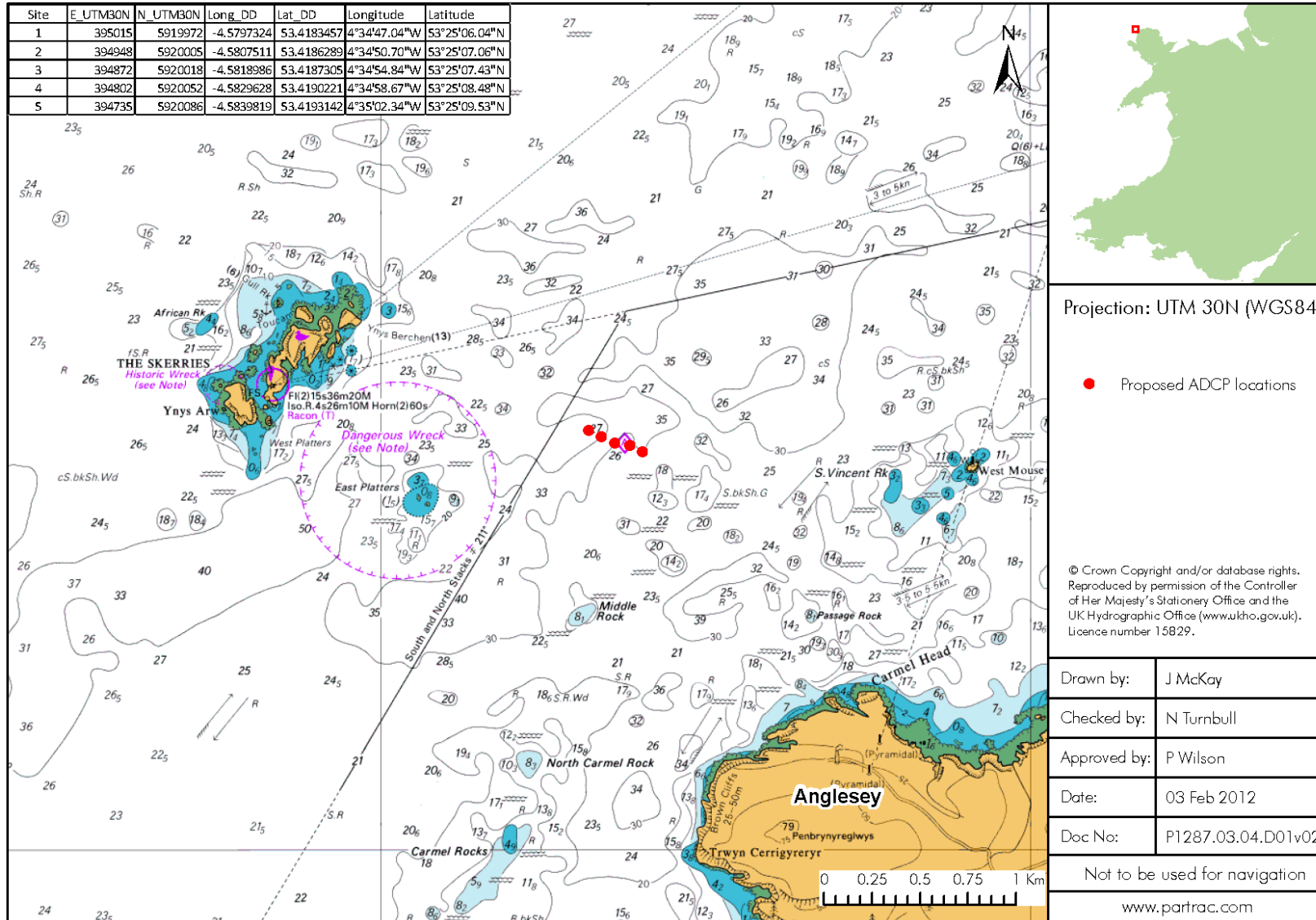
Skipper: Jon Shaw 07770 816 460

The seabed frames are constructed of stainless steel and moored with sufficient ballast to prevent any movement under wave or tidal forcing. A recovery line is attached to the frame leading to a ground weight and acoustic release transponder system. The ADCP instrument is housed vertically within the frame, approximately 0.5m above the seabed.

The survey vessel will be on station for approximately 1 hour during the recovery visit at each of the locations. Other vessels should maintain an appropriate and safe distance when passing *Seekat* and should *pass at the lowest possible speed to avoid vessel wash effects*.

Marine License: 11-71-ML-1

Please contact Judy McKay, [jmckay@partrac.com](mailto:jmckay@partrac.com) / 0141 552 3903 quoting ref P1287 if you require more information.



## Distribution List

Name	Company	Email
Cara Donovan	MCT	<a href="mailto:cara.donovan@marineturbines.com">cara.donovan@marineturbines.com</a>
Pete Wilson	Partrac	<a href="mailto:pwilson@partrac.com">pwilson@partrac.com</a>
Niall Turnbull	Partrac	<a href="mailto:nturnbull@partrac.com">nturnbull@partrac.com</a>
P1287	Partrac	<a href="mailto:p1287@partrac.com">p1287@partrac.com</a>
Kingfisher	Seafish	<a href="mailto:kingsfisher@seafish.co.uk">kingsfisher@seafish.co.uk</a>
Coastguard - Holyhead	MCA Coastguard	<a href="mailto:wm.holyhead@mcga.gov.uk">wm.holyhead@mcga.gov.uk</a>
Captain Brian McCleery	Holyhead Port	<a href="mailto:brian.mccleery@stenaline.com">brian.mccleery@stenaline.com</a>
Harbour Master	Almwyth Harbour	
Notice to Mainers	Notice to Mainers	<a href="mailto:hdcfiles@ukho.gov.uk">hdcfiles@ukho.gov.uk</a>
Radio Navigation Warnings	Radio Navigation Warnings	<a href="mailto:navwarnings@btconnect.com">navwarnings@btconnect.com</a>
FLO Jim Andrews	AWJ Marine Ltd	<a href="mailto:jim@awjmarine.co.uk">jim@awjmarine.co.uk</a>
Trinity Lighthouse Board	Trinity Lighthouse Board	<a href="mailto:navigation.directorate@thls.org">navigation.directorate@thls.org</a>
Wales - Marine Planning	Wales - Marine Planning	<a href="mailto:marine@wales.gsi.gov.uk">marine@wales.gsi.gov.uk</a>