

Notice to Mariners – Frame Deployments

Partrac will deploy seabed frames at the locations below between Tue 28/02/12 and Sun 04/03/12, weather dependant.

All positions are WGS84.

| Site | Long_DD | Lat_DD | Longitude | Latitude |
|------|----------|----------|--------------|---------------|
| 1 | -4.57973 | 53.41835 | 4°34'47.04"W | 53°25'06.04"N |
| 2 | -4.58075 | 53.41863 | 4°34'50.70"W | 53°25'07.06"N |
| 3 | -4.5819 | 53.41873 | 4°34'54.84"W | 53°25'07.43"N |
| 4 | -4.58296 | 53.41902 | 4°34'58.67"W | 53°25'08.48"N |
| 5 | -4.58398 | 53.41931 | 4°35'02.34"W | 53°25'09.53"N |

The vessel *Seekat C* will be used (Catamaran, approx. 11m in length).

The seabed frames are constructed of stainless steel and moored with sufficient ballast to prevent any movement under wave or tidal forcing. A recovery line will be attached to the frame leading to a ground weight and acoustic release transponder system. The ADCP instrument is housed vertically within the frame, approximately 0.5m above the seabed.

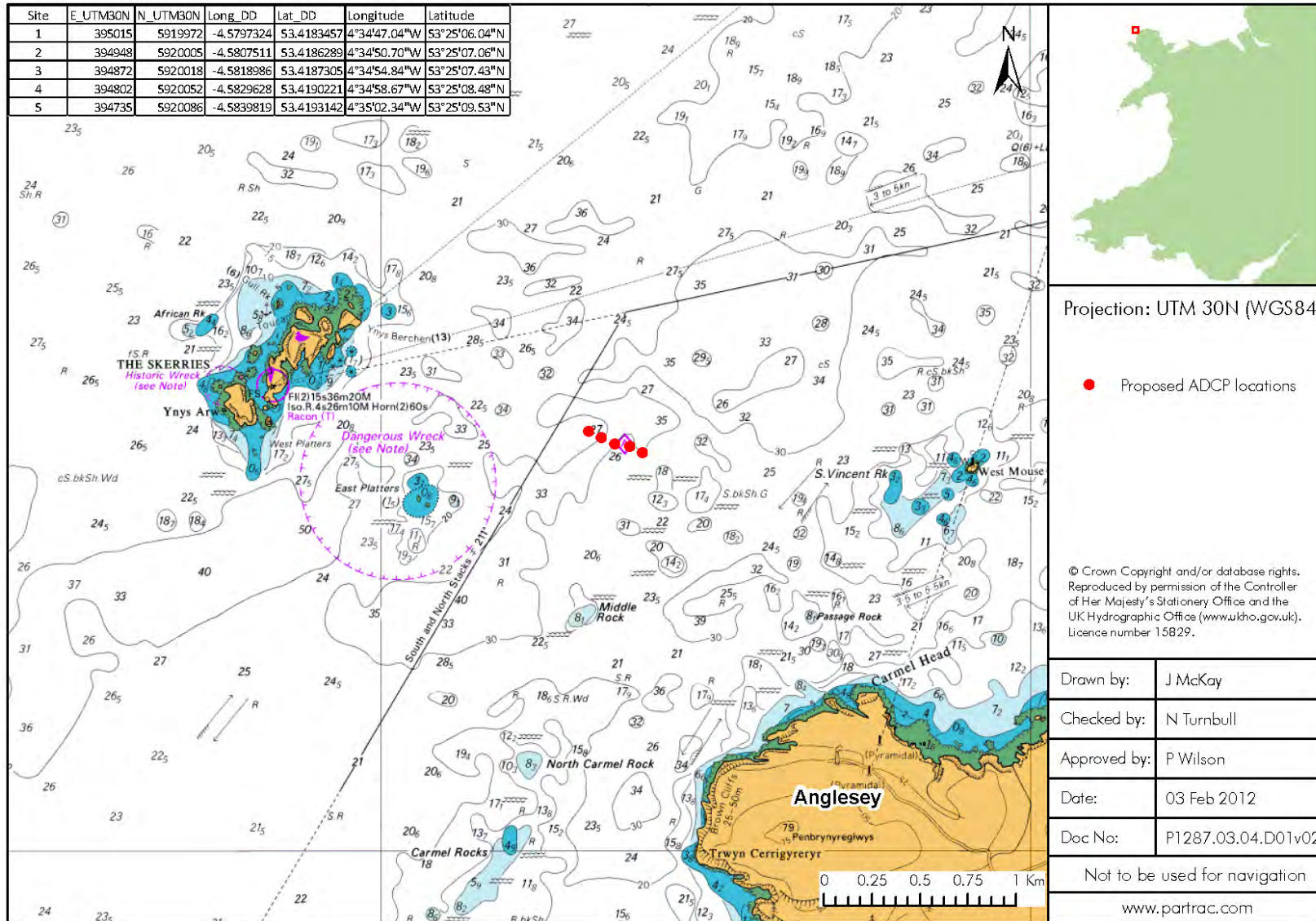
The equipment will be deployed at the locations above and there will be **no surface markers**. They will remain in place for 30 days.

The survey vessel will be on station for approximately 1 hour during each deployment, service and recovery visit at each of the locations. Other vessels should maintain an appropriate and safe distance when passing *Seekat* and should *pass at the lowest possible speed to avoid vessel wash effects*.

A further notice will be issued with the as laid positions of the frames and ground weights.

Marine License: 11-71-ML-1

Please contact Judy McKay, jmckay@partrac.com / 0141 552 3903 quoting ref P1287 if you require more information.



Distribution List

| Name | Company | Email |
|---------------------------|---------------------------|--|
| Cara Donovan | MCT | cara.donovan@marineturbines.com |
| Pete Wilson | Partrac | pwilson@partrac.com |
| Niall Turnbull | Partrac | nturnbull@partrac.com |
| P1287 | Partrac | p1287@partrac.com |
| Kingfisher | Seafish | kingsfisher@seafish.co.uk |
| Coastguard - Holyhead | MCA Coastguard | wm.holyhead@mcga.gov.uk |
| Captain Brian McCleery | Holyhead Port | brian.mccleery@stenaline.com |
| Harbour Master | Almwyth Harbour | |
| Notice to Mainers | Notice to Mainers | hdcfiles@ukho.gov.uk |
| Radio Navigation Warnings | Radio Navigation Warnings | navwarnings@btconnect.com |
| FLO Jim Andrews | AWJ Marine Ltd | jim@awjmarine.co.uk |
| Trinity Lighthouse Board | Trinity Lighthouse Board | navigation.directorate@thls.org |
| Wales - Marine Planning | Wales - Marine Planning | marine@wales.gsi.gov.uk |