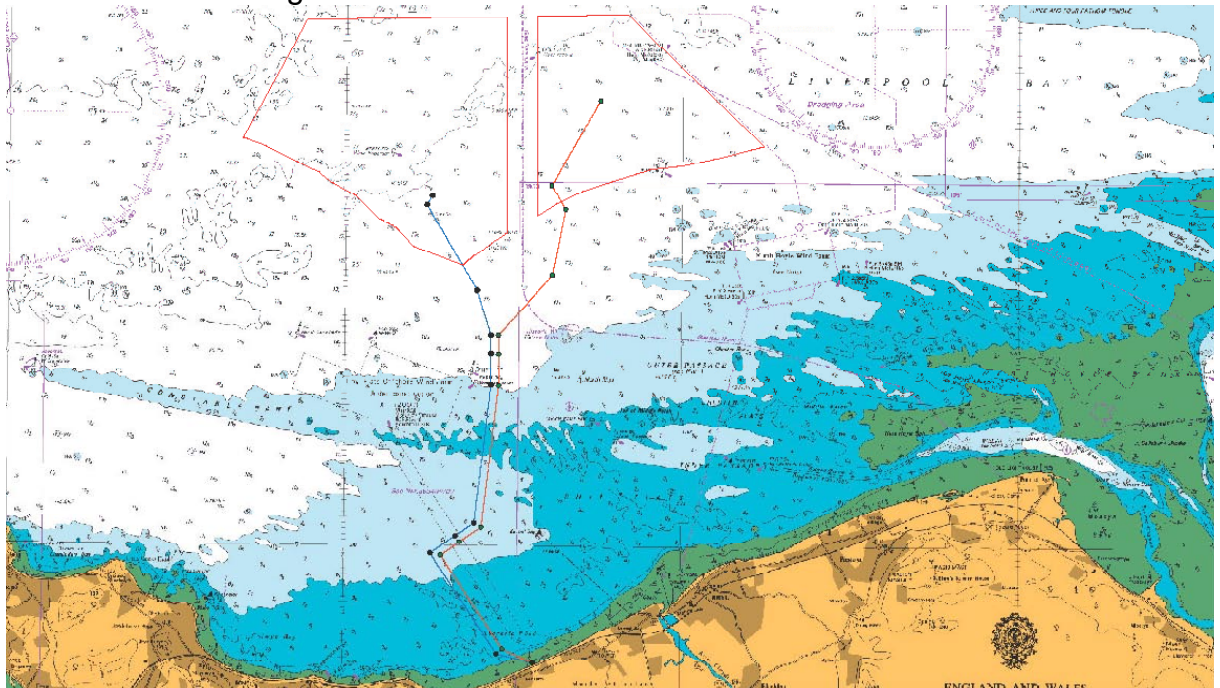


Notice to Mariners

Please be advised that Osiris Projects will be carrying out survey operations on the Gwynt-Y-Mor Offshore wind farm and associated export cable corridor, on behalf of RWE NPower Renewables Ltd.

Survey operations will commence around the **4th April 2011** and are anticipated to last 30 days subject to weather delays. Survey works will be undertaken by 'MV Lia'.

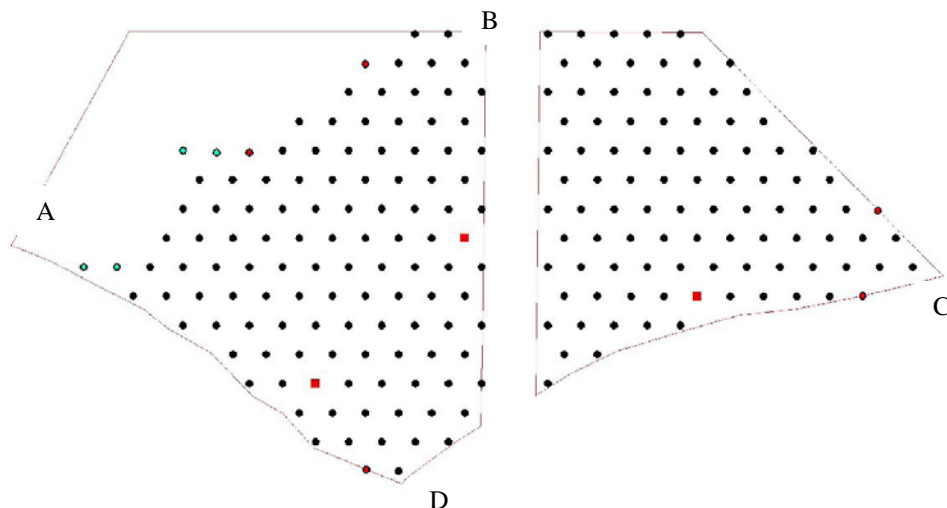
The areas of investigation are:



Development Area;

The Site boundary co-ordinates (WGS84 Format) are as follows:

	Long	Lat
A	-3.7146995	53.4544862
B	-3.5919966	53.4902368
C	-3.4748814	53.452987
D	-3.6082866	53.4172037



MV LIA is a 15.3m catamaran survey vessel with white hull/superstructure operating from Deganwy Marina for the duration of the project.

Contact details for the vessel:-

LIA (Call Sign MERD8)
Monitoring VHF CH16

Vessel Mobile 07740 023 510
Vessel E-mail lia@osirisprojects.co.uk



MV Lia will be towing underwater sensors up to 100m astern of the vessel and will be restricted in the ability to manoeuvre. It is requested that all vessels operating within this area keep their distance and pass at minimum speed to reduce vessel wash. Survey operations will be conducted during daylight hours only and the vessel will display appropriate day shapes and lights (during reduced visibility) and will actively transmit an AIS signal.

Further details are available from Osiris Projects at:-

Maritime House, 4 Brunel Road, Croft Business Park, Bromborough, Wirral UK
CH62 3NY www.osirisprojects.co.uk Tel: 0151 328 1120 Fax: 0151 343 1057
Email: operations@osirisprojects.co.uk

Distribution List:

Rhyl Flats Marine Coordinator	-	rhylflatstraffic.innogy@rwe.com
Project FLO	-	jim@awjmarine.co.uk
RWE NRL	-	jonathan.chambers@rwe.com
UKHO	-	hdcfiles@ukho.gov.uk
Trinity House	-	navigation.directorate@thls.org
King Fisher	-	kingfisher@seafish.co.uk