

NOTICE TO MARINERS

Moyle Survey – Geophysical and ROV Survey Cable Route Survey

Mariners are advised that a Geophysical and ROV survey will be conducted between the landfalls of Scotland (approx 3.5km south of Ballantrae) and Ireland (5km east of Larne). Landfall coordinates can be found below. The approximate length of the two cables is 53km.

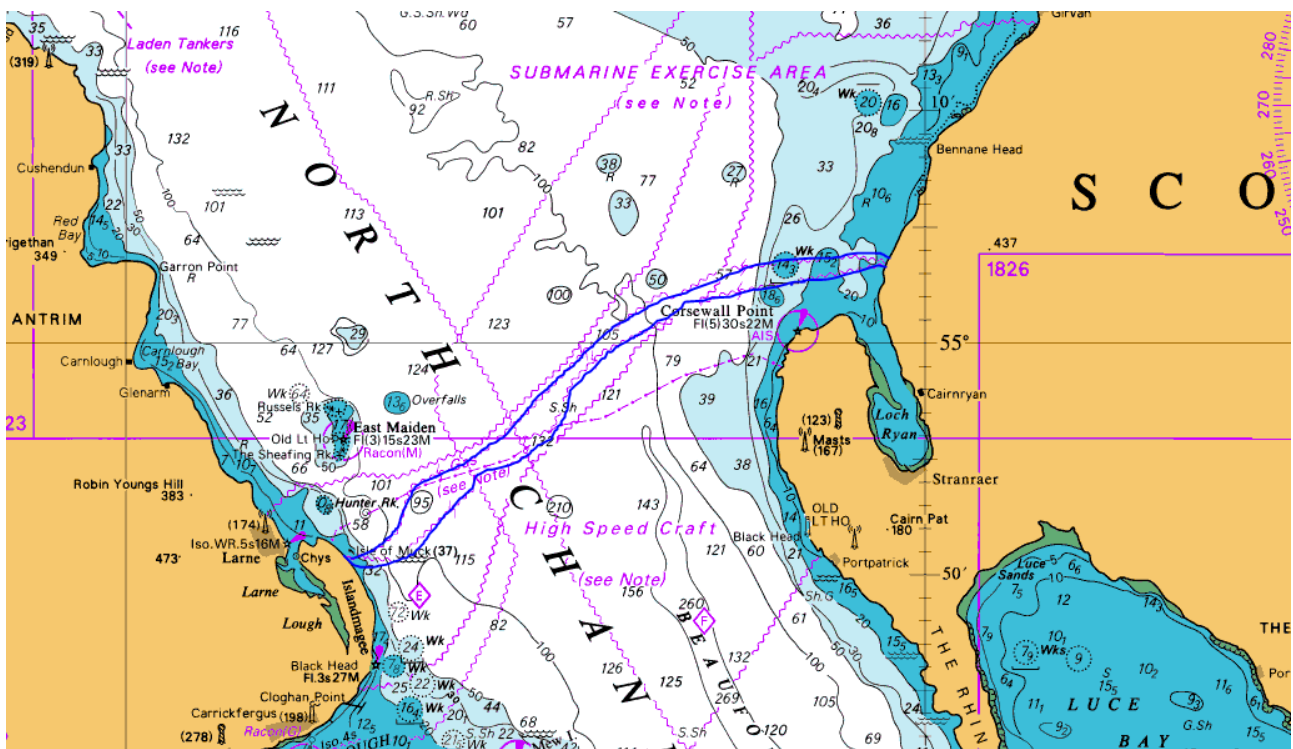
Landfall Ireland	Landfall Scotland	Approximate Route length (km)
5° 43.231244 W 54° 50.760877 N	5° 2.573132 W 55° 3.558638 N	53

Nature of operations:

Survey operations shall be conducted on behalf of Nexans Norway AS using the Gardline vessel MV Ocean Reliance. The project is expected to commence on **23rd March 2015** with an operational duration of 10-14 days excluding delays due to weather. This will also depend on the number of targets found along the route that will require visual identification from the ROV.

Survey Area:

The survey route is shown below (marked in blue – please note this is a rough drawing, for more accurate positions please refer to the RPLs attached in Appendix B):



The coordinates for the survey corridor have been provided in the RPLs attached with this document. A line plan has also been produced as is attached with this document as well (Appendix A).

The vessel will be surveying 6 lines across the two corridors in the first and second phases of this job. Spot dives on objects found will then be conducted as required. This survey will involve the use of hull mounted echo sounders and a towed side-scan sonar / magnetometer array that will be towed up to 600m behind the vessel dependent on environmental conditions.

The survey vessel will conduct the survey operations on a 24-hour basis. During survey operations with Ocean Reliance will be **restricted in the ability to manoeuvre**. All marine traffic are requested to remain 1km from the stern of the vessel and 500m from the bow. We also request that a lateral distance of 500m from the vessel is kept clear at all times. .

During the survey, the vessel(s) will display the prescribed lights and signals for underwater operations and will be monitoring VHF Channels 12 and 16.

Issued by Gardline
18th March 2015

Offshore Vessel:


Flag	St. Vincent & The Grenadines
Class	Bureau Veritas ICEIII AUT-UMS DYNAPOS-AM
Year Built	1987
Reconfigured	2012
Call Sign	J8B2707
IMO Number	8616609
MMSI Number	377339000
Length	85.36m
Breadth	14.0m
Draught	3.54m
Gross Tonnage	2100T
Lifting/Winch Equipment Highlights	Heila HRLM 230/4SL, 32T@3m 10T@16mtr, 10T winch, 500mtr hook travel. 3.0m x 3.0m Moonpool, with 50T SWL deployment tower and 25T SWL tool handling system.
Endurance	28 days
Main Engine	2 x MAN B&W Alpha Diesel LV2330A 625kW 5 x Mitsubishi S12A2 847kW Generators 2 x Cummins QSM11/VM Harbour Sets
Thrusters	2 x Jastram W90 for DP1 – S1 mode 550kW
DP System	Kongsberg cPos (DP class 1)
Accommodation	43 berths

Radio Navigation Warnings:

tbc

Distribution List:

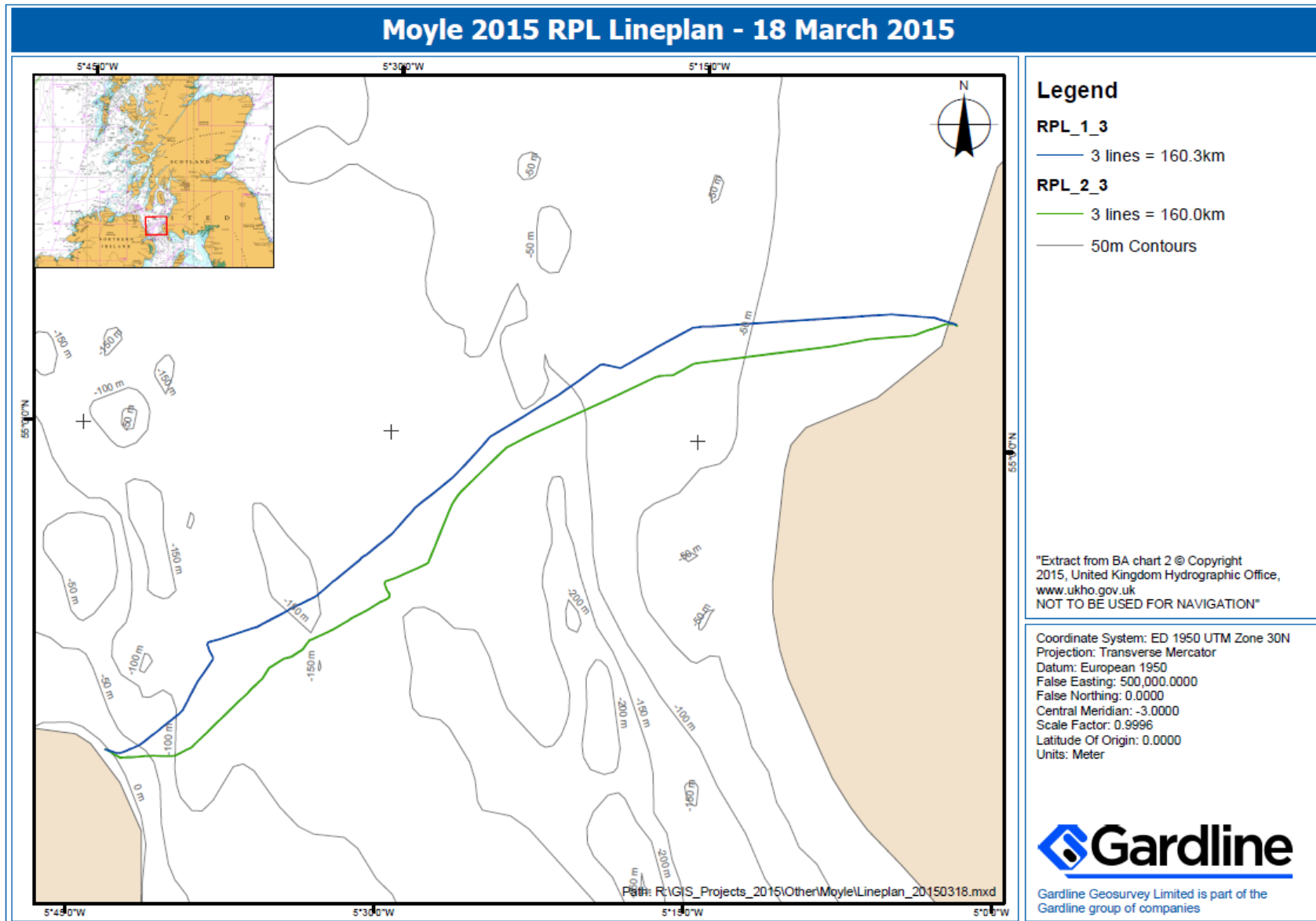
tbc

Project Contact Details:

Name: Oyvind Haug
Role: Project Engineer
Company: Nexans Norway AS
Tel: +47 22 88 65 09 / +47 916 27 674
E-mail: oyvind.haug@nexans.com

Name: Alex Overstall
Role: Project Manager
Company: Gardline Geosurvey Limited
Tel: +44 1493 845 600
E-mail: alexander.overstall@gardline.co.uk

Appendix A: Line plan for Ocean Reliance



Appendix A: RPL List

North Cable Route						South Cable Route					
LAT	LAT	LAT	LON	LON	29.322	LAT	LAT	LAT	LON	LON	LON
degrees	minutes	seconds	degrees	minutes		degrees	minutes	seconds	degrees	minutes	seconds
055	3	32.546	-005	2	29.322	055	3	31	-005	2	28.300
055	3	33.515	-005	2	29.322	055	3	31	-005	2	28.603
055	3	37.910	-005	3	29.322	055	3	32	-005	2	32.047
055	3	42.632	-005	3	29.322	055	3	33	-005	2	33.833
055	3	42.650	-005	3	29.322	055	3	34	-005	2	34.477
055	3	43.041	-005	3	29.322	055	3	34	-005	2	37.548
055	3	43.262	-005	3	29.322	055	3	34	-005	3	2.893
055	3	44.021	-005	3	29.322	055	3	26	-005	3	34.847
055	3	44.247	-005	3	29.322	055	3	26	-005	3	35.837
055	3	44.350	-005	3	29.322	055	3	26	-005	3	37.087
055	3	44.696	-005	3	29.322	055	3	26	-005	3	38.040
055	3	45.112	-005	4	29.322	055	3	26	-005	3	39.227
055	3	45.438	-005	4	29.322	055	3	25	-005	3	39.840
055	3	46.342	-005	4	29.322	055	3	25	-005	3	40.619
055	3	47.244	-005	5	29.322	055	3	25	-005	3	41.043
055	3	47.674	-005	5	29.322	055	3	25	-005	3	41.480
055	3	46.787	-005	5	29.322	055	3	25	-005	3	41.927
055	3	45.088	-005	6	29.322	055	3	25	-005	3	42.439
055	3	43.388	-005	6	29.322	055	3	25	-005	3	44.049
055	3	43.017	-005	7	29.322	055	3	25	-005	3	45.304
055	3	41.657	-005	7	29.322	055	3	25	-005	3	45.864
055	3	41.220	-005	7	29.322	055	3	25	-005	3	46.242
055	3	40.022	-005	7	29.322	055	3	25	-005	3	46.506
055	3	38.421	-005	8	29.322	055	3	24	-005	3	46.867
055	3	36.846	-005	8	29.322	055	3	24	-005	3	47.222
055	3	36.816	-005	8	29.322	055	3	24	-005	3	47.619
055	3	35.132	-005	9	29.322	055	3	24	-005	3	48.124
055	3	33.446	-005	9	29.322	055	3	24	-005	3	48.586
055	3	31.758	-005	10	29.322	055	3	24	-005	3	49.057
055	3	30.068	-005	10	29.322	055	3	24	-005	3	49.849
055	3	28.376	-005	11	29.322	055	3	23	-005	3	50.947
055	3	26.681	-005	11	29.322	055	3	23	-005	3	51.156
055	3	24.985	-005	12	29.322	055	3	23	-005	3	53.316
055	3	23.287	-005	12	29.322	055	3	23	-005	3	54.381
055	3	22.002	-005	13	29.322	055	3	23	-005	3	55.501
055	3	21.559	-005	13	29.322	055	3	22	-005	3	56.462
055	3	19.747	-005	13	29.322	055	3	22	-005	3	57.253
055	3	17.933	-005	14	29.322	055	3	20	-005	4	7.474
055	3	17.571	-005	14	29.322	055	3	14	-005	4	31.014
055	3	17.082	-005	14	29.322	055	3	12	-005	4	45.241
055	3	16.929	-005	14	29.322	055	3	5	-005	6	44.347
055	3	16.672	-005	15	29.322	055	2	51	-005	8	38.226
055	3	15.549	-005	15	29.322	055	2	35	-005	11	24.134
055	3	14.451	-005	15	29.322	055	2	25	-005	13	19.890
055	3	14.007	-005	15	29.322	055	2	16	-005	14	59.359
055	3	5.184	-005	15	29.322	055	2	15	-005	15	14.111
055	2	56.360	-005	16	29.322	055	2	13	-005	15	21.895
055	2	47.535	-005	16	29.322	055	2	5	-005	15	46.131
055	2	38.707	-005	17	29.322	055	1	59	-005	16	2.178
055	2	36.940	-005	17	29.322	055	1	53	-005	16	18.795
055	2	29.681	-005	17	29.322	055	1	52	-005	16	49.334

055	2	20.603	-005	18	29.322	055	1	52	-005	16	55.903
055	2	11.523	-005	18	29.322	055	1	49	-005	17	10.891
055	2	8.350	-005	18	29.322	055	1	10	-005	19	21.623
055	2	2.906	-005	18	29.322	055	0	7	-005	23	2.396
055	2	2.856	-005	18	29.322	054	59	60	-005	23	25.671
055	2	2.725	-005	18	29.322	054	59	50	-005	23	54.615
055	2	5.503	-005	19	29.322	054	59	42	-005	24	19.350
055	2	7.672	-005	19	29.322	054	59	24	-005	24	50.870
055	2	7.121	-005	19	29.322	054	58	56	-005	25	37.646
055	2	6.958	-005	19	29.322	054	58	25	-005	26	28.985
055	2	3.977	-005	19	29.322	054	58	18	-005	26	38.076
055	1	56.359	-005	20	29.322	054	58	4	-005	26	52.193
055	1	45.661	-005	20	29.322	054	57	50	-005	27	2.253
055	1	40.206	-005	20	29.322	054	57	28	-005	27	16.397
055	1	35.131	-005	21	29.322	054	57	11	-005	27	26.641
055	1	24.778	-005	21	29.322	054	56	51	-005	27	39.533
055	1	14.422	-005	21	29.322	054	56	37	-005	27	48.469
055	1	10.443	-005	22	29.322	054	56	23	-005	27	57.126
055	1	4.612	-005	22	29.322	054	56	19	-005	28	7.802
055	0	55.142	-005	22	29.322	054	56	14	-005	28	27.138
055	0	45.670	-005	23	29.322	054	56	3	-005	29	5.283
055	0	36.196	-005	23	29.322	054	55	58	-005	29	22.480
055	0	28.856	-005	23	29.322	054	55	54	-005	29	37.146
055	0	26.721	-005	23	29.322	054	55	51	-005	29	55.716
055	0	17.245	-005	24	29.322	054	55	50	-005	29	58.879
055	0	7.768	-005	24	29.322	054	55	49	-005	30	0.014
054	59	59.390	-005	25	29.322	054	55	48	-005	30	1.081
054	59	57.826	-005	25	29.322	054	55	46	-005	30	1.804
054	59	46.445	-005	25	29.322	054	55	45	-005	30	1.605
054	59	44.417	-005	25	29.322	054	55	37	-005	29	55.809
054	59	31.266	-005	25	29.322	054	55	34	-005	29	53.887
054	59	18.114	-005	26	29.322	054	55	33	-005	29	52.309
054	59	8.156	-005	26	29.322	054	55	30	-005	29	49.216
054	59	5.047	-005	26	29.322	054	55	28	-005	29	46.659
054	58	52.249	-005	26	29.322	054	55	24	-005	29	45.957
054	58	47.440	-005	26	29.322	054	55	21	-005	29	50.396
054	58	40.417	-005	27	29.322	054	55	18	-005	30	0.404
054	58	29.166	-005	27	29.322	054	55	16	-005	30	5.974
054	58	17.914	-005	27	29.322	054	55	16	-005	30	9.042
054	58	6.661	-005	28	29.322	054	55	15	-005	30	10.866
054	57	55.407	-005	28	29.322	054	55	12	-005	30	17.761
054	57	54.776	-005	28	29.322	054	55	0	-005	30	49.289
054	57	48.281	-005	28	29.322	054	54	52	-005	31	13.687
054	57	42.058	-005	28	29.322	054	54	52	-005	31	13.730
054	57	36.078	-005	29	29.322	054	54	47	-005	31	29.686
054	57	28.796	-005	29	29.322	054	54	45	-005	31	36.437
054	57	15.490	-005	29	29.322	054	54	40	-005	31	46.771
054	57	9.402	-005	29	29.322	054	54	37	-005	31	54.851
054	57	3.215	-005	29	29.322	054	54	33	-005	32	6.229
054	56	57.488	-005	30	29.322	054	54	26	-005	32	25.942
054	56	51.982	-005	30	29.322	054	54	20	-005	32	44.844
054	56	51.718	-005	30	29.322	054	54	16	-005	32	59.788
054	56	40.932	-005	30	29.322	054	54	13	-005	33	10.201
054	56	40.530	-005	30	29.322	054	54	9	-005	33	21.903
054	56	32.483	-005	31	29.322	054	54	5	-005	33	36.337
054	56	31.366	-005	31	29.322	054	54	2	-005	33	40.331
054	56	29.940	-005	31	29.322	054	53	59	-005	33	44.223

054	56	27.961	-005	31	29.322	054	53	50	-005	33	54.511
054	56	23.962	-005	31	29.322	054	53	37	-005	34	27.147
054	56	18.061	-005	31	29.322	054	53	33	-005	34	49.091
054	56	6.611	-005	31	29.322	054	53	16	-005	35	30.756
054	55	55.161	-005	32	29.322	054	52	58	-005	35	49.218
054	55	49.445	-005	32	29.322	054	52	39	-005	36	21.684
054	55	46.840	-005	32	29.322	054	52	32	-005	36	31.553
054	55	46.174	-005	32	29.322	054	52	26	-005	36	42.200
054	55	44.173	-005	32	29.322	054	52	20	-005	36	52.333
054	55	40.123	-005	32	29.322	054	52	15	-005	37	1.600
054	55	35.076	-005	32	29.322	054	52	15	-005	37	1.654
054	55	32.179	-005	32	29.322	054	52	10	-005	37	9.584
054	55	23.642	-005	33	29.322	054	52	3	-005	37	21.351
054	55	21.881	-005	33	29.322	054	51	54	-005	37	36.191
054	55	20.671	-005	33	29.322	054	51	47	-005	37	46.724
054	55	20.169	-005	33	29.322	054	51	40	-005	37	59.210
054	55	17.566	-005	33	29.322	054	51	28	-005	38	18.430
054	55	12.095	-005	33	29.322	054	51	24	-005	38	24.359
054	55	7.712	-005	34	29.322	054	51	17	-005	38	36.987
054	55	3.942	-005	34	29.322	054	51	5	-005	38	56.989
054	54	58.402	-005	34	29.322	054	50	57	-005	39	9.346
054	54	56.515	-005	34	29.322	054	50	53	-005	39	22.218
054	54	55.790	-005	34	29.322	054	50	42	-005	39	56.045
054	54	55.436	-005	34	29.322	054	50	42	-005	40	11.126
054	54	46.920	-005	35	29.322	054	50	41	-005	40	20.056
054	54	38.192	-005	35	29.322	054	50	41	-005	40	58.782
054	54	29.461	-005	35	29.322	054	50	40	-005	41	14.295
054	54	24.980	-005	36	29.322	054	50	40	-005	41	26.133
054	54	22.088	-005	36	29.322	054	50	38	-005	41	49.181
054	54	16.145	-005	36	29.322	054	50	37	-005	42	2.645
054	54	10.200	-005	37	29.322	054	50	37	-005	42	7.673
054	54	4.254	-005	37	29.322	054	50	37	-005	42	13.206
054	54	1.056	-005	38	29.322	054	50	37	-005	42	16.475
054	54	0.097	-005	38	29.322	054	50	37	-005	42	18.051
054	53	58.807	-005	38	29.322	054	50	37	-005	42	19.165
054	53	58.255	-005	38	29.322	054	50	37	-005	42	20.558
054	53	55.834	-005	38	29.322	054	50	37	-005	42	22.168
054	53	51.473	-005	38	29.322	054	50	37	-005	42	24.196
054	53	48.783	-005	38	29.322	054	50	36	-005	42	24.916
054	53	48.406	-005	38	29.322	054	50	36	-005	42	25.911
054	53	42.431	-005	38	29.322	054	50	36	-005	42	26.694
054	53	41.302	-005	38	29.322	054	50	36	-005	42	27.304
054	53	40.796	-005	38	29.322	054	50	36	-005	42	27.881
054	53	33.360	-005	38	29.322	054	50	36	-005	42	28.514
054	53	32.417	-005	38	29.322	054	50	36	-005	42	29.206
054	53	30.673	-005	38	29.322	054	50	36	-005	42	30.163
054	53	29.134	-005	38	29.322	054	50	36	-005	42	30.884
054	53	28.381	-005	38	29.322	054	50	36	-005	42	31.855
054	53	26.142	-005	38	29.322	054	50	36	-005	42	32.559
054	53	20.274	-005	38	29.322	054	50	36	-005	42	33.403
054	53	18.015	-005	38	29.322	054	50	36	-005	42	34.177
054	53	3.422	-005	38	29.322	054	50	36	-005	42	34.737
054	52	48.829	-005	38	29.322	054	50	36	-005	42	35.267
054	52	47.224	-005	38	29.322	054	50	36	-005	42	35.898
054	52	33.355	-005	39	29.322	054	50	36	-005	42	36.149
054	52	23.750	-005	39	29.322	054	50	36	-005	42	36.430
054	52	17.748	-005	39	29.322	054	50	36	-005	42	36.781

054	52	2.103	-005	39	29.322	054	50	36	-005	42	37.202
054	52	1.764	-005	39	29.322	054	50	36	-005	42	37.707
054	51	59.667	-005	39	29.322	054	50	37	-005	42	38.355
054	51	57.206	-005	39	29.322	054	50	37	-005	42	38.824
054	51	52.834	-005	39	29.322	054	50	37	-005	42	39.417
054	51	49.546	-005	39	29.322	054	50	37	-005	42	40.368
054	51	39.750	-005	40	29.322	054	50	37	-005	42	40.786
054	51	38.263	-005	40	29.322	054	50	37	-005	42	41.153
054	51	28.580	-005	40	29.322	054	50	38	-005	42	41.761
054	51	26.994	-005	40	29.322	054	50	38	-005	42	42.387
054	51	21.412	-005	40	29.322	054	50	38	-005	42	42.904
054	51	16.204	-005	41	29.322	054	50	39	-005	42	46.156
054	51	15.878	-005	41	29.322	054	50	48	-005	43	13.836
054	51	4.633	-005	41	29.322	054	50	48	-005	43	17.903
054	50	59.288	-005	41	29.322	054	50	49	-005	43	20.076
054	50	55.001	-005	41	29.322	054	50	48	-005	43	20.361
054	50	54.409	-005	41	29.322						
054	50	51.892	-005	42	29.322						
054	50	50.881	-005	42	29.322						
054	50	49.233	-005	42	29.322						
054	50	47.844	-005	42	29.322						
054	50	45.302	-005	42	29.322						
054	50	44.421	-005	42	29.322						
054	50	43.911	-005	42	29.322						
054	50	43.900	-005	42	29.322						
054	50	43.888	-005	42	29.322						
054	50	43.873	-005	42	29.322						
054	50	43.841	-005	42	29.322						
054	50	43.824	-005	42	29.322						
054	50	43.805	-005	42	29.322						
054	50	43.736	-005	42	29.322						
054	50	44.614	-005	42	29.322						
054	50	47.995	-005	43	29.322						
054	50	48.218	-005	43	29.322						
054	50	48.636	-005	43	29.322						
054	50	48.890	-005	43	29.322						